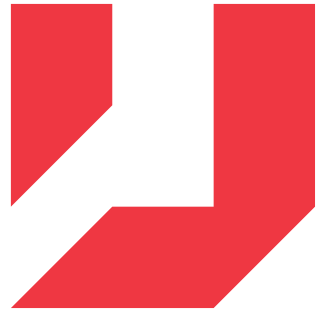


# 2021 | Product Data



**UNILOCK**  
PAVERS & WALLS

# Unilock Quality Products

Unilock makes your landscape dreams come true with the highest quality pavers and walls in the industry. We offer five categories of products that are designed to offer you beauty, longevity and low maintenance. Whatever Unilock product you choose, we stand behind it 100%.

## Unilock Technologies

### Reala™

Utilizing REALA technology, a multitude of natural stone surfaces, brick and historic cobblestones are cast to create a wide variety of authentic textures with consistent dimensions that are more cost efficient to install.

### Ultima™

Only Unilock has the technology in North America to manufacture Ultima Concrete resulting in pavers up to four times stronger than poured concrete. With Ultima, the look you purchase is the look that will last.

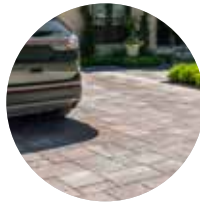
### ColorFusion™

The look of natural granite is achieved when color and granite particles are randomly dispersed using proprietary ColorFusion technology to achieve a unique mottled surface.



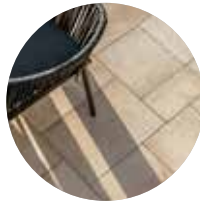
Nothing protects pavers from stains like EasyClean.

- ✓ Pavers are pre-sealed at the factory
- ✓ Enhanced resistance to weathering
- ✓ Reduced dirt absorption
- ✓ Stains from leaves, coffee, ketchup, mustard, wine and BBQ oils are easier to remove



### CLASSIC

- > Budget-friendly shapes and styles
- > Unaffected by frost, resistant to de-icing salts and slip resistant
- > Traditional product mix of large and small aggregates consistent from top to bottom



### ENDURACOLOR™

- > Two-step manufacturing process: Coarser base aggregates combined with color and wear-resistant surface aggregates
- > Unaffected by frost, resistant to de-icing salts, slip resistant and chlorine pool water resistant



### ELEGANCE™

- > Deep, rich colors unique Reala™ textures
- > Ultima™ Concrete provides up to 4x the strength of poured-in-place concrete
- > Unaffected by frost, resistant to de-icing salts, slip resistant and chlorine pool water resistant



### STONEMARK™

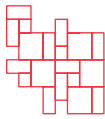
- > Highly detailed surface texture created with Reala Technology
- > Surface texture and color resembling natural stone but with the durability of a manufactured paver or wall product



### PERMEABLE

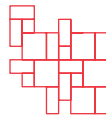
- > Installed on an aggregate base with extra wide joints to reduce rainwater flow
- > Extensive collection to choose from, just look for the permeable symbol

# Table of Contents



## PAVERS

Ada™ Paver	4
Anchorlock®	4
Arcana® EASYCLEAN	5
Artline™ Smooth	6
Artline™ Umbriano™ EASYCLEAN	7
Beacon Hill™ Flagstone	8
Beacon Hill Smooth	10
Bristol Valley® EASYCLEAN	12
Brussels Block®	13
Camelot™	14
Copthorne®	15
Courtstone®	16
Dura-Mat™	17
Eco-Line®	18
Eco-Optiloc™	19
Eco-Priora™	20
Eco-Promenade®	21
Eco-Stone™	22
Granito™ EASYCLEAN	23
Hex™ Paver	24
Hollandstone™	25
Il Campo®	26
Mattoni™ EASYCLEAN	27
Optiloc™	33
Promenade™ Plank Paver	35
Richcliff®	36
Senzo™ EASYCLEAN	37
Series™	38
Skyline™	40
Thornbury™ Smooth	41
Town Hall®	42
Transition™	43
Treo® Classic	44
Treo® Premier	45
Treo® Smooth	46
Tribeca Cobble™	47
Turfstone™	48
Umbriano™ EASYCLEAN	49
Westport™ EASYCLEAN	51



## NATURAL STONE & PORCELAIN

Natural Stone - Sandstone	28
Natural Stone - Limestone	31
Porcelain	34



## RETAINING WALLS

Brussels Dimensional System™	52
Concord Wall™	53
DuraHold® 2	54
Estate Wall™	55
Estate Wall™ 150mm	59
Estate Wall™ 75mm	60
Lineo™ Dimensional Stone	61
Rivercrest® Wall	63
SienaEdge™	65
SienaStone™	66
U-Cara®	67

## COPING, STEPS, PILLAR CAPS

Brussels Fullnose™ & Fullnose Edger	72
Ledgestone™ Coping, Caps & Steps	73
Architectural Pillar Cap	75
Universal™ Coping & Base	75



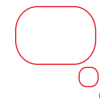
## FIRE FEATURES

Sunset Round & Square	76
Rivercrest®	77
RomanStack™	78



## ACCESSORIES

Cleaners/Sealers/Adhesives	80
Sands	82
Edge Restraints	84
Landscape Base, Fabrics & Grids	85
Special Order Tools/Accessories	86



Unilock Elements	79
Charts	86
Important Notes	87
Laying Patterns	88
Finishes / Color Blends	91
Product Directory	92





# Our Quality Commitment

---

Unilock was the first concrete paver manufacturer in North America to offer a Lifetime Guarantee, and since then we have continued to stand behind it to ensure customers are completely satisfied with our products. With almost 2 billion stones in the ground, that's quite the commitment!

Our products are better and stronger than other brands. In fact, our internal standards of manufacturing in the USA and Canada far exceed industry standards set by ASTM (American Society for Testing and Materials) and CSA (Canadian Standards Association) and other European organizations.



## LIFETIME GUARANTEE - RESIDENTIAL

Our Transferable Lifetime Guarantee warranties the structural integrity of Unilock concrete paving stones and retaining wall units when used in residential applications. It covers any structural failure or deterioration of the concrete unit resulting from normal use or from the reasonable application of sodium chloride (common rock salt used for deicing). StoneMark™ products have the same warranties as Unilock paving stones and retaining walls, but cannot be warrantied against damage resulting from de-icing products. Any materials installed and maintained to our guidelines, and subject to normal wear, that prove defective, will be replaced without cost. Proof of purchase is required. Customers are encouraged to submit receipts to us as soon as their project is complete, using the Unilock Warranty Registration Form on our website (Unilock.com).

Purchasers need to ensure that the product they purchase is appropriate for their intended application; for example, only certain thicknesses of products are appropriate for driveways. Color matching of the replacement product and/or lost time cannot be guaranteed and labor costs related to installing replacement product is not included. Unilock reserves the right to seek a professional diagnosis and opinion to determine the exact cause of the product failure. If the failure falls within our warranty parameters, Unilock will replace the defective product.

**EXCLUSIONS** – Unfortunately, some things are beyond the control of Unilock, and are therefore not covered by this warranty. These include: naturally occurring efflorescence, hazing from polymeric jointing sand, scratching and chipping resulting from snow removal or construction equipment, damage caused by natural or un-natural disasters, or negligence by anyone other than Unilock. The Unilock warranty also does not cover deterioration or damage as a result of poor design or poor installation practices that are contrary to specifications as laid out by ICPI (Interlocking Concrete Pavement Institute) and the NCMA (National Concrete Masonry Association). For more information please visit [www.icpi.org](http://www.icpi.org) and [www.ncma.org](http://www.ncma.org). Additionally, please refer to the Maintenance, Color and Installation Advisories.

## MAINTENANCE ADVISORY

### 1. Cleaning and Sealing

As with anything that is outdoors, Unilock products are subject to harsh weather, dust, acid rain, leaf stains, water stains and general wear from foot or vehicular traffic. Therefore, periodic cleaning using environmentally safe detergents designed for cleaning concrete is recommended to

maintain a bright, fresh appearance.

To make subsequent cleaning easier and more effective, a concrete sealer can be applied to new or cleaned products to help prevent the penetration of substances that can cause stains.

There are many types of concrete cleaners and sealers on the market. Always read the instructions carefully before using the product to make sure that it will function as expected. Testing first, in a small unobtrusive area, is always a good idea to ensure the results are acceptable. Consult your local hardscape dealer to find the products best suited for your paver or wall installation.

### 2. Winter Maintenance

Snow removal by way of metal blades on plows or shovels will scratch and chip the surface of pavers, causing permanent damage. To mitigate this risk, metal snow clearing blades must always have a polyurethane or rubber cutting edge attached when plowing pavers.

**De-icing Salts** – The use of de-icing products on paver surfaces is important for safety and to help mitigate snow accumulation. Most de-icing products will have some effect on concrete, even if the product label indicates that it is safe on concrete. If you must use a de-icing product, we recommend that you use Sodium Chloride (ordinary rock salt) or Calcium Chloride (for colder climates). Always apply sparingly. The use of de-icing products on StoneMark, wet-cast pavers, slabs or coping may damage the product and therefore is not recommended. Whenever possible use a coarse sand as an anti-slip measure instead of de-icing chemicals.



## COLOR ADVISORY

### 1. Selection

Due to the inherently variable nature of printed materials and digital monitors, Unilock cannot guarantee that products will match the color of printed or online images. Therefore, when making final product selections, decisions should be made based on actual stones which are readily available from Unilock, Authorized Contractors or Authorized Dealers. Most Unilock products are not comprised of a single color, but rather contain blended colors for a more natural appearance. This means that there will be significant color variance from stone to stone, so purchasers should view multiple units together to get a more accurate impression of the overall color.

*Note:* Unilock Natural Stone variations are outside the control of Unilock. Purchasers of natural stone must be willing to accept this inherent variability.

### 2. Pre-installation checking

Always check the label to ensure that the Unilock product delivered to your project is the product and color ordered. If there is a discrepancy, or if the product inside the packaging doesn't appear to be correct, contact your hardscape dealer before installing any pavers or wall units. If the product is installed, it indicates your acceptance of the products as delivered.

### 3. Blending

If the project requires more than one bundle of product it's always a good idea to draw product from several bundles when installing, as this ensures that any variation between bundles will be

seamlessly integrated in the project. When bundles are from different production runs, random selection from multiple bundles is even more important.

### 4. Efflorescence

Efflorescence is a naturally occurring process that may appear as a white or light grey powder on the surface of concrete, clay or natural stone. It is temporary, and will disappear over time. However, if it is bothersome, an efflorescence cleaner can be used to remove it. There is no way to predict or prevent efflorescence. Because it does not compromise the structural integrity of the product, it is not covered by Unilock product warranties.

## INSTALLATION ADVISORY

### 1. Construction Residue

While a certain amount of dirt on pavers and walls is inevitable during the construction phase, installers are strongly encouraged to clean as they go as construction residue can embed in the surface and become difficult to remove. The slurry produced during wet-saw cutting is particularly stubborn to clean if allowed to dry on the surface of pavers. Unilock warranties do not cover stains caused by a failure to remove construction residue.

### 2. Polymeric Haze

Surface hazing caused by polymeric jointing sand is not the responsibility of Unilock. Polymeric jointing sand should only be installed by an experienced and knowledgeable contractor. Any sand that is left on the surface prior to activation will result in a haze that is very

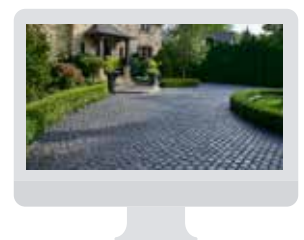
difficult and time-consuming to remove. Only the highest quality, brand name polymeric sand that is guaranteed by the manufacturer should be used.

### 3. Compaction Damage

Both smooth and textured paver surfaces can be scratched by compaction equipment used to 'flatten' a new paver installation. Therefore, metal plate compactors must be fitted with a polyethylene mat to protect the paver surface from becoming scratched, or a superior option is to use a rubber-roller compactor instead. Damage to product surfaces caused by failure to follow these instructions is not covered by Unilock product warranties.

## FIRE PIT WARNING

Wood-burning fire pits must be lined with a proper metal insert or refractory (fire-rated) brick to protect the concrete components from extreme exposure to heat. Extreme heat on a concrete surface may affect the structural integrity of the concrete and can be dangerous. The floor of the fire pit should always be constructed using refractory brick or a sand bed. For your safety, always use a spark screen over the fire.



**Visit [Unilock.com](https://www.unilock.com) to register for your Transferable Lifetime Guarantee.**

# Ada Paver

## CLASSIC



CHARCOAL



RED

**SPECIAL ORDER  
PRODUCT**



STANDARD  
12 x 12 x 2 3/4"  
300 x 300 x 70mm

### ADVANTAGES

#### DRIVE FRIENDLY

Can handle vehicular loads

Bundle Type	RANDOM
	STANDARD
Thickness (mm)	70MM
Dimension mm	300mm x 300mm x 70mm
Dimension Imperial	11 7/8" x 11 7/8" x 2 3/4"

SQFT PER	Bundle	93.04
	Layer	
	Section	23.26
	Stone	0.97

PER BUNDLE	Layers	
	Sections	4.00

SOLDIER LNFT PER	SqFt	1.02
	Section	23.62
	Layer	
	Bundle	94.49

SAILOR LNFT PER	SqFt	1.02
	Section	23.62
	Layer	
	Bundle	94.49

UNITS PER	SqFt	1.03
	Section	24.00
	Bundle	96.00

LBS PER	Layer	
	Section	745
	Bundle	2,980

Internal Use Only. ADA CH

Notes: Special Order from standard colors - Lead time required. Minimum quantities apply. \*Sold in full bundles only.

# Anchorlock®

## CLASSIC



NATURAL



**SPECIAL ORDER  
PRODUCT**



STANDARD  
8 7/8 x 8 7/8 x 3 1/8"  
225 x 225 x 80mm

### ADVANTAGES

#### DRIVE FRIENDLY

Can handle vehicular loads

Bundle Type	SINGLE
	STANDARD
Thickness (mm)	80MM
Dimension mm	225mm x 225mm x 80mm
Dimension Imperial	8 7/8" x 8 7/8" x 3 1/8"

SQFT PER	Bundle	78.80
	Layer	11.26000
	Section	
	Stone	0.42

PER BUNDLE	Layers	7.00
	Sections	

SOLDIER LNFT PER	SqFt	-
	Section	-
	Layer	-
	Bundle	-

SAILOR LNFT PER	SqFt	-
	Section	-
	Layer	-
	Bundle	-

UNITS PER	SqFt	2.37
	Section	
	Bundle	186.69

LBS PER	Layer	420
	Section	
	Bundle	2,937

Internal Use Only. ANC UX

Notes: Special Order from standard colors - Lead time required. Minimum quantities apply. This product is optimized for mechanical installation. \*Sold in full bundles only. 1/3 stones incorporated within the standard bundle.



CORVARA



LUGANO

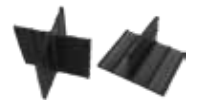


MODENA



VIVANTO

**SPECIAL ORDER  
PRODUCT**



X & T Slab Spacers  
Bagged Separately  
(see page 84)

	12" X 24"	18" X 24"	24" X 24"
<b>Bundle Type</b>	<b>SINGLE</b>	<b>SINGLE</b>	<b>SINGLE</b>
Thickness (mm)	<b>50MM</b>	<b>50MM</b>	<b>50MM</b>
Dimension mm	301mm x 606mm x 50mm	453mm x 606mm x 50mm	606mm x 606mm x 50mm
Dimension Imperial	11 7/8" x 23 7/8" x 2"	17 7/8" x 23 7/8" x 2"	23 7/8" x 23 7/8" x 2"

<b>SQFT PER</b>	Bundle	36.00	54.00	72.00
	Layer	4.00000	6.00000	8.00000
	Section	-	-	-
	Stone	2.00	3.00	4.00

<b>PER BUNDLE</b>	Layers	9.00	9.00	9.00
	Sections	-	-	-

<b>SOLDIER LNFT PER</b>	SqFt	0.49	0.50	0.50
	Section	-	-	-
	Layer	1.98	2.97	3.98
	Bundle	17.78	26.75	35.79

<b>SAILOR LNFT PER</b>	SqFt	0.99	0.66	0.50
	Section	-	-	-
	Layer	3.98	3.98	3.98
	Bundle	35.79	35.79	35.79

<b>UNITS PER</b>	SqFt	0.50	0.33	0.25
	Section	-	-	-
	Bundle	18.00	18.00	18.00

<b>LBS PER</b>	Layer	96	144	192
	Section	-	-	-
	Bundle	864	1,296	1,728



23 7/8 x 23 7/8 x 2"  
606 x 606 x 50mm



11 7/8 x 23 7/8 x 2"  
301 x 606 x 50mm



17 7/8 x 23 7/8 x 2"  
453 x 606 x 50mm

## ADVANTAGES

### EASYCLEAN™

Factory sealed to provide integral surface protection from stains

### PEDESTRIAN FRIENDLY

Not recommended for vehicular use

Notes: **Sold in full bundles only and is produced and sold on a required and refundable skid.** Unilock offers adjustable and stackable pedestal systems; please contact your Territory Manager for pricing and availability. **Product is not intended for vehicular applications.** Please refer to the Polymeric Sand Best Practices and Important Notes on page 83. All measurements are nominal. Unilock recommends to install Arcana using T and X Slab spacers - see page 84. Please contact your sales manager for more information.

Internal Use Only. ARC CH





FOSSIL **NEW**



STEEL MOUNTAIN

Bundle Type		RANDOM
		7 UNIT
Thickness (mm)		70MM
Dimension mm		
Dimension Imperial		

SQFT PER	Bundle	93.25
	Layer	11.66000
	Section	-
	Stone	0.49

PER BUNDLE	Layers	8.00
	Sections	-

SOLDIER LNFT PER	SqFt	-
	Section	-
	Layer	-
	Bundle	-

SAILOR LNFT PER	SqFt	-
	Section	-
	Layer	-
	Bundle	-

UNITS PER	SqFt	2.06
	Section	-
	Bundle	192.00

LBS PER	Layer	388
	Section	-
	Bundle	3,100

## 7 UNIT RANDOM BUNDLE



6 3/4" x 4 7/8" x 2 3/4"  
169 x 125 x 70mm



10 3/8" x 4 7/8" x 2 3/4"  
263 x 125 x 70mm



13 3/8" x 4 7/8" x 2 3/4"  
338 x 125 x 70mm



17 3/4" x 4 7/8" x 2 3/4"  
45 x 125 x 70mm



8 7/8" x 7 1/2" x 2 3/4"  
225 x 188 x 70mm



13 3/8" x 7 1/2" x 2 3/4"  
338 x 188 x 70mm



17 3/4" x 7 1/2" x 2 3/4"  
45 x 188 x 70mm

## ADVANTAGES

### DRIVE FRIENDLY

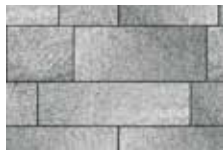
Can handle vehicular loads

Notes: **Sold in full bundles only.** **Important:** Textured surfaces require a buffer between the plate compactor and the paver surface to prevent scuffing.

Internal Use Only. ART NY



FRENCH GREY



WINTER MARVEL



2 COLOR BLEND  
ORDERED SEPARATELY  
& BLENDED ON SITE

Bundle Type	RANDOM
	7 UNIT
Thickness (mm)	70MM
Dimension mm	
Dimension Imperial	

SQFT PER	Bundle	93.25
	Layer	11.66000
	Section	-
	Stone	0.49

PER BUNDLE	Layers	8.00
	Sections	-

SOLDIER LNFT PER	SqFt	-
	Section	-
	Layer	-
	Bundle	-

SAILOR LNFT PER	SqFt	-
	Section	-
	Layer	-
	Bundle	-

UNITS PER	SqFt	2.06
	Section	-
	Bundle	192.00

LBS PER	Layer	414
	Section	-
	Bundle	3,310

7 UNIT RANDOM BUNDLE			
			
6¾" x 4⅞" x 2¾" 169 x 125 x 70mm	10⅜" x 4⅞" x 2¾" 263 x 125 x 70mm	13⅝" x 4⅞" x 2¾" 338 x 125 x 70mm	17¾" x 4⅞" x 2¾" 45 x 125 x 70mm
			
8⅞" x 7½" x 2¾" 225 x 188 x 70mm	13⅜" x 7½" x 2¾" 338 x 188 x 70mm	17¾" x 7½" x 2¾" 45 x 188 x 70mm	

## ADVANTAGES

### EASYCLEAN™

Factory sealed to provide integral surface protection from stains

### COLORFUSION™

Subtly mottled color finish

### DRIVE FRIENDLY

Can handle vehicular loads

Notes: **Sold in full bundles only.** **Important:** Textured surfaces require a buffer between the plate compactor and the paver surface to prevent scuffing.

Internal Use Only. ART NY



ALMOND GROVE



FOSSIL



NEW YORK BLEND



SIERRA



STEEL MOUNTAIN



BAVARIAN  
SPECIAL ORDER

Bundle Type	RANDOM
	3 UNIT
Thickness (mm)	60MM
Dimension mm	
Dimension Imperial	

SQFT PER	Bundle	104.60
	Layer	10.46000
	Section	-
	Stone	1.31

PER BUNDLE	Layers	10.00
	Sections	-

SOLDIER LNFT PER	SqFt	-
	Section	-
	Layer	-
	Bundle	-

SAILOR LNFT PER	SqFt	0.85
	Section	-
	Layer	8.86
	Bundle	88.58

UNITS PER	SqFt	0.76
	Section	-
	Bundle	80.00

LBS PER	Layer	292
	Section	-
	Bundle	2,922

## 3 UNIT RANDOM BUNDLE



LARGE RECTANGLE  
21 x 14 x 2 3/8"  
540 x 360 x 60mm



SQUARE  
14 x 14 x 2 3/8"  
360 x 360 x 60mm



SMALL RECTANGLE  
7 x 14 x 2 3/8"  
180 x 360 x 60mm

**NOTE - PRODUCT NOW HAS 10 LAYERS PER BUNDLE**

## ADVANTAGES

### PEDESTRIAN FRIENDLY

Not recommended for vehicular

Notes: **Sold in full bundles only.** **Important:** Textured surfaces require a buffer between the plate compactor and the paver surface to prevent scuffing.

Internal Use Only. BHF NY/UX





FOSSIL  
SPECIAL ORDER



STEEL MOUNTAIN  
SPECIAL ORDER

**SPECIAL ORDER  
PRODUCT**

Bundle Type		RANDOM
		3 UNIT
Thickness (mm)		80MM
Dimension mm		
Dimension Imperial		

SQFT PER	Bundle	73.22
	Layer	10.46000
	Section	-
	Stone	1.31

PER BUNDLE	Layers	7.00
	Sections	-

SOLDIER LNFT PER	SqFt	-
	Section	-
	Layer	-
	Bundle	-

SAILOR LNFT PER	SqFt	0.85
	Section	-
	Layer	8.86
	Bundle	62.00

UNITS PER	SqFt	0.76
	Section	-
	Bundle	56.00

LBS PER	Layer	405
	Section	-
	Bundle	2,832

## 3 UNIT RANDOM BUNDLE



LARGE RECTANGLE  
21 x 14 x 3/8"  
540 x 360 x 80mm



SQUARE  
14 x 14 x 3/8"  
360 x 360 x 80mm



SMALL RECTANGLE  
7 x 14 x 3/8"  
180 x 360 x 80mm

## ADVANTAGES

### DRIVE FRIENDLY

Can handle vehicular loads

Notes: **Sold in full bundles only.** Special Order from standard colors - Lead time required.  
Minimum quantities apply. Important: Textured surfaces require a buffer between the plate compactor and the paver surface to prevent scuffing.

Internal Use Only, BHF NY



ALMOND GROVE



FOSSIL



NEW YORK BLEND



SIERRA



STEEL MOUNTAIN

Bundle Type		RANDOM	XL
		3 UNIT	SINGLE
Thickness (mm)		60MM	60MM
Dimension mm		540mm x 900mm x 60mm	
Dimension Imperial		21 1/4" x 35 1/2" x 2 3/8"	

SQFT PER	Bundle	104.60	104.60
	Layer	10.46000	10.46000
	Section	-	-
	Stone	1.31	5.23

PER BUNDLE	Layers	10.00	10.00
	Sections	-	-

SOLDIER LNFT PER	SqFt	-	0.34
	Section	-	-
	Layer	-	3.54
	Bundle	-	35.43

SAILOR LNFT PER	SqFt	0.85	0.56
	Section	-	-
	Layer	8.86	5.91
	Bundle	88.58	59.06

UNITS PER	SqFt	0.76	0.19
	Section	-	-
	Bundle	80.00	20.00

LBS PER	Layer	307	309
	Section	-	-
	Bundle	3,070	3,086

## 3 UNIT RANDOM BUNDLE



**LARGE RECTANGLE**  
21 1/4" x 14 1/8" x 2 3/8"  
540 x 360 x 60mm  
18 units/bundle  
2.08 Sq.Ft/Stone

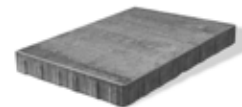


**SQUARE**  
14 1/8" x 14 1/8" x 2 3/8"  
360 x 360 x 60mm  
27 units/bundle  
1.39 Sq.Ft/Stone



**SMALL RECTANGLE**  
7 1/8" x 14 1/8" x 2 3/8"  
180 x 360 x 60mm  
27 units/bundle  
.69 Sq.Ft/Stone

**XL UNIT SOLD SEPARATELY**



**XL UNIT**  
21 1/4" x 35 x 2 3/8"  
540 x 900 x 60mm

**NOTE - PRODUCT NOW HAS 10 LAYERS PER BUNDLE**

## ADVANTAGES

### PEDESTRIAN FRIENDLY

Not recommended for vehicular

Notes: **Sold in full bundles only.** **Important:** Textured surfaces require a buffer between the plate compactor and the paver surface to prevent scuffing.

Internal Use Only. BHS NY/UX

## COMING IN 2021 - NEW SIZES



ALMOND GROVE



FOSSIL



NEW YORK BLEND



SIERRA



STEEL MOUNTAIN

Bundle Type		RANDOM	SINGLE
		3 UNIT	XL
Thickness (mm)		60MM	60MM
Dimension mm			570mm x 950mm x 60mm
Dimension Imperial			22 1/2" X 37 1/2" X 2 3/8"

SQFT PER	Bundle	116.57	116.57
	Layer	11.66000	11.66000
	Section	-	-
	Stone	1.46	5.83

PER BUNDLE	Layers	10.00	10.00
	Sections	-	-

SOLDIER LNFT PER	SqFt	-	0.32
	Section	-	-
	Layer	-	3.74
	Bundle	-	37.40

SAILOR LNFT PER	SqFt	0.80	0.53
	Section	-	-
	Layer	9.35	6.23
	Bundle	93.50	62.30

UNITS PER	SqFt	0.69	0.17
	Section	-	-
	Bundle	80.00	20.00

LBS PER	Layer	320	320
	Section	-	-
	Bundle	3,199	3,199

### 3 UNIT RANDOM BUNDLE



LARGE RECTANGLE  
22½ x 15 x 2⅜"  
570 x 380 x 60mm



SQUARE  
15 x 15 x 2⅜"  
380 x 380 x 60mm



SMALL RECTANGLE  
7½ x 15 x 2⅜"  
190 x 380 x 60mm

### XL UNIT SOLD SEPARATELY



XL UNIT  
22½ x 37½ x 2⅜"  
570 x 950 x 60mm

**NOTE - PRODUCT NOW HAS 10 LAYERS PER BUNDLE**

### ADVANTAGES

#### PEDESTRIAN FRIENDLY

Not recommended for vehicular

Notes: **Sold in full bundles only.** **Important:** Textured surfaces require a buffer between the plate compactor and the paver surface to prevent scuffing.

Internal Use Only, BHS NY/UX





BAVARIAN



FOSSIL **NEW**



STEEL MOUNTAIN

Bundle Type	RANDOM
	3 UNIT
Thickness (mm)	<b>60MM</b>
Dimension mm	
Dimension Imperial	

SQFT PER	Bundle	104.60
	Layer	10.46000
	Section	-
	Stone	1.31

PER BUNDLE	Layers	10.00
	Sections	

SOLDIER LNFT PER	SqFt	-
	Section	-
	Layer	-
	Bundle	-

SAILOR LNFT PER	SqFt	0.85
	Section	-
	Layer	8.86
	Bundle	88.58

UNITS PER	SqFt	0.76
	Section	-
	Bundle	80.00

LBS PER	Layer	294
	Section	-
	Bundle	2,940

## 3 UNIT RANDOM BUNDLE



LARGE RECTANGLE  
21¼" x 14⅞" x 2⅜"  
540 x 360 x 60mm



SQUARE  
14⅞" x 14⅞" x 2⅜"  
360 x 360 x 60mm



SMALL RECTANGLE  
7⅞" x 14⅞" x 2⅜"  
180 x 360 x 60mm

**NOTE - PRODUCT NOW HAS 10 LAYERS PER BUNDLE**

## ADVANTAGES

**EASYCLEAN™** 

Factory sealed to provide integral surface protection from stains

## PEDESTRIAN FRIENDLY

Not recommended for vehicular

Notes: **Sold in full bundles only.**

Internal Use Only. BRV UX



ALMOND GROVE



LIMESTONE



SIERRA

Bundle Type	SINGLE	SINGLE	SINGLE
	HALF	STANDARD	XL
Thickness (mm)	70MM	70MM	70MM
Dimension mm	104mm x 173mm x 70mm	173mm x 208mm x 70mm	208mm x 348mm x 70mm
Dimension Imperial	4" x 6 7/8" x 2 3/4"	6 7/8" x 8 1/4" x 2 3/4"	8 1/4" x 13 3/4" x 2 3/4"

SQFT PER	Bundle	88.70	88.60	76.56
	Layer	-	-	-
	Section	12.67	12.66	25.52
	Stone	0.20	0.40	0.80

PER BUNDLE	Layers	-	-	-
	Sections	7.00	7.00	3.00

SOLDIER LNFT PER	SqFt	1.72	1.44	0.86
	Section	21.84	18.27	21.84
	Layer	-	-	-
	Bundle	152.86	127.87	65.51

SAILOR LNFT PER	SqFt	2.87	1.73	1.43
	Section	36.33	21.84	36.54
	Layer	-	-	-
	Bundle	254.28	152.86	109.61

UNITS PER	SqFt	5.05	2.53	1.25
	Section	64.00	32.00	32.00
	Bundle	448.00	224.00	96.00

LBS PER	Layer	-	-	-
	Section	398	455	843
	Bundle	2,789	3,187	2,528



HALF STONE  
4 x 6 7/8 x 2 3/4"  
104 x 173 x 70mm



STANDARD STONE  
6 7/8 x 8 1/4 x 2 3/4"  
173 x 208 x 70mm



XL STONE  
8 1/4 x 13 3/4 x 2 3/4"  
208 x 348 x 70mm

## ADVANTAGES

### DRIVE FRIENDLY

Can handle vehicular loads

Internal Use Only. BBK UX



ALMOND GROVE



MIDNIGHT CHARCOAL  
RECTANGLE ONLY



GRANITE



SIERRA

	Bundle Type	SINGLE	SINGLE
		SQUARE	RECTANGLE
Thickness (mm)		60MM	60MM
Dimension mm		159.8mm x 159.8mm x 60mm	160mm x 240mm x 60mm
Dimension Imperial		6 3/8" x 6 3/8" x 2 3/8"	6 3/8" x 9 1/2" x 2 3/8"

SQFT PER	Bundle	115.50	111.33
	Layer	-	-
	Section	16.50	22.27
	Stone	0.28	0.41

PER BUNDLE	Layers	-	-
	Sections	7.00	5.00

SOLDIER LNFT PER	SqFt	1.79	1.19
	Section	29.53	26.57
	Layer	-	-
	Bundle	206.69	132.87

SAILOR LNFT PER	SqFt	1.79	1.79
	Section	29.53	39.86
	Layer	-	-
	Bundle	206.69	199.31

UNITS PER	SqFt	3.64	2.43
	Section	60.00	54.00
	Bundle	420.00	270.00

LBS PER	Layer	-	-
	Section	464	630
	Bundle	3,247	3,150



SQUARE  
6⅜ x 6⅜ x 2⅜"  
160 x 160 x 60mm



RECTANGLE  
6⅜ x 9½ x 2⅜"  
160 x 240 x 60mm

## ADVANTAGES

### DRIVE FRIENDLY

Can handle vehicular loads

Internal Use Only. CAM UX





BURGUNDY RED



BURNT CLAY



OLD OAK



BASALT



STEEL BLUE


BURGUNDY RED/  
BURNT CLAY/OLD OAK  
Sold Separately/  
Blended on Site

Bundle Type		SINGLE - HALF BUNDLE	SINGLE - FULL BUNDLE
		Standard	Standard
Thickness (mm)		60MM	60MM
Dimension mm		65mm x 200mm x 60mm	65mm x 200mm x 60mm
Dimension Imperial		2 5/8" x 7 7/8" x 2 3/8"	2 5/8" x 7 7/8" x 2 3/8"

SQFT PER	Bundle	44.60	89.20
	Layer	11.15000	11.15000
	Section	-	-
	Stone	0.15	0.15

PER BUNDLE	Layers	4.00	8.00
	Sections	-	-

SOLDIER LNFT PER	SqFt	1.43	1.43
	Section	-	-
	Layer	15.99	15.99
	Bundle	63.98	127.95

SAILOR LNFT PER	SqFt	4.41	4.41
	Section	-	-
	Layer	49.21	49.21
	Bundle	196.85	393.70

UNITS PER	SqFt	6.73	6.73
	Section	-	-
	Bundle	300.00	600.00

LBS PER	Layer	294	294
	Section	-	-
	Bundle	1,175	2,349


STANDARD  
2 1/2" x 7 7/8" x 2 3/8"  
65 x 200 x 60mm

### ADVANTAGES

#### REALA™

Cast from historic street pavers

#### ULTIMA™

Up to 4x stronger than poured-in-place concrete

#### DRIVE FRIENDLY

Can handle vehicular loads

Notes: \*Sold in full or half bundles only and shipped on a refundable skid. Half bundles are available in all colors and are Special Order with lead time required and subject to a fee. Important: Textured surfaces require a buffer between the plate compactor and the paver surface to prevent scuffing. Read the Polymeric Sand advisory on page 83.

Internal Use Only. COP ON



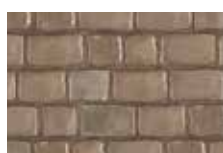
BASALT



BELGIAN BLUE



DAWN MIST



PEBBLE TAUPE



BASALT/ BELGIAN BLUE  
Sold Separately/  
Blended on Site



DAWN MIST/ PEBBLE TAUPE  
Sold Separately/  
Blended on Site

Bundle Type		RANDOM - HALF BUNDLE	RANDOM - FULL BUNDLE
		Standard	Standard
Thickness (mm)		60MM	60MM
Dimension mm			
Dimension Imperial			

SQFT PER	Bundle	49.15	98.30
	Layer	12.29000	12.29000
	Section	-	-
	Stone	0.26	0.26

PER BUNDLE	Layers	4.00	8.00
	Sections	-	-

SOLDIER LNFT PER	SqFt	-	-
	Section	-	-
	Layer	-	-
	Bundle	-	-

SAILOR LNFT PER	SqFt	2.25	2.25
	Section	-	-
	Layer	27.69	27.69
	Bundle	110.76	221.52

UNITS PER	SqFt	3.91	3.91
	Section	-	-
	Bundle	192.00	384.00

LBS PER	Layer	291	291
	Section	-	-
	Bundle	1,163	2,326

## 5 UNIT RANDOM BUNDLE



XL RECTANGLE  
8<sup>3</sup>/<sub>8</sub> x 5<sup>1</sup>/<sub>8</sub> x 2<sup>3</sup>/<sub>8</sub>"  
215 x 130 x 60mm



LARGE RECTANGLE  
7<sup>1</sup>/<sub>4</sub> x 5<sup>1</sup>/<sub>8</sub> x 2<sup>3</sup>/<sub>8</sub>"  
185 x 130 x 60mm



RECTANGLE  
6<sup>1</sup>/<sub>2</sub> x 5<sup>1</sup>/<sub>8</sub> x 2<sup>3</sup>/<sub>8</sub>"  
165 x 130 x 60mm



SMALL RECTANGLE  
5<sup>3</sup>/<sub>4</sub> x 5<sup>1</sup>/<sub>8</sub> x 2<sup>3</sup>/<sub>8</sub>"  
145 x 130 x 60mm



SQUARE  
5<sup>1</sup>/<sub>8</sub> x 5<sup>1</sup>/<sub>8</sub> x 2<sup>3</sup>/<sub>8</sub>"  
130 x 130 x 60mm

## ADVANTAGES

### REALA™

Cast from historic European cobblestones

### ULTIMA™

Up to 4x stronger than  
poured-in-place concrete

### DRIVE FRIENDLY

Can handle vehicular loads

Notes: \*Sold in full or half bundles only and shipped on a refundable skid. Half bundles are available in all colors and are Special Order with lead time required and subject to a fee. Important: Textured surfaces require a buffer between the plate compactor and the paver surface to prevent scuffing. Read the Polymeric Sand advisory on page 83.

Internal Use Only. CRT ON



**SPECIAL ORDER  
PRODUCT**

NATURAL

	STANDARD
<b>Bundle Type</b>	<b>SINGLE</b>
Thickness (mm)	<b>100MM</b>
Dimension mm	500MM X 500MM X 100MM
Dimension Imperial	19 3/4" X 19 3/4" X 3 7/8"



STANDARD  
19 3/4" x 19 3/4" x 3 7/8"  
500 x 500 x 100mm

<b>SQFT PER</b>	Bundle	78.40
	Layer	11.20000
	Section	-
	Stone	2.80

<b>PER BUNDLE</b>	Layers	7.00
	Sections	-

<b>SOLDIER LNFT PER</b>	SqFt	-
	Section	-
	Layer	-
	Bundle	-

<b>SAILOR LNFT PER</b>	SqFt	-
	Section	-
	Layer	-
	Bundle	-

<b>UNITS PER</b>	SqFt	0.36
	Section	-
	Bundle	28.00

<b>LBS PER</b>	Layer	320
	Section	-
	Bundle	2,240

Dura-Mat is typically used in applications to reduce and control erosion. Commonly used at the base of, or entrances to, retention pools.

### ADVANTAGES

#### PERMEABLE

Can be installed to allow water to flow through

#### DRIVE FRIENDLY

Can handle vehicular loads

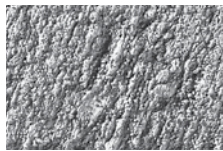
Notes: \*Special Order - Lead time is required, minimum quantities apply. Sold in full bundles only and is produced and sold on a required, refundable skid. All measurements are nominal. Contact Unilock for more information.

Internal Use Only. DMT ON

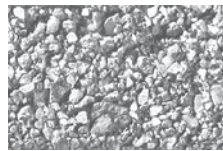




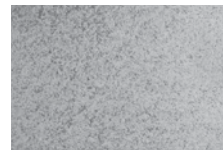
REVELA FINISH



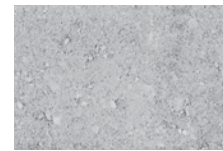
IL CAMPO® FINISH



SERIES™ FINISH



UMBRIANO® FINISH



PREMIER FINISH

**SPECIAL ORDER  
PRODUCT**

		<b>8 UNIT</b>
<b>Bundle Type</b>		<b>RANDOM</b>
Thickness (mm)		<b>100MM</b>
Dimension mm		
Dimension Imperial		

<b>SQFT PER</b>	Bundle	66.20
	Layer	11.03000
	Section	
	Stone	0.34

<b>PER BUNDLE</b>	Layers	6.00
	Sections	

<b>SOLDIER LNFT PER</b>	SqFt	-
	Section	-
	Layer	-
	Bundle	-

<b>SAILOR LNFT PER</b>	SqFt	-
	Section	-
	Layer	-
	Bundle	-

<b>UNITS PER</b>	SqFt	2.90
	Section	
	Bundle	192.00

<b>LBS PER</b>	Layer	504
	Section	
	Bundle	3,027

#### 8 UNIT RANDOM BUNDLE



14 x 3<sup>5</sup>/<sub>16</sub> x 4"  
357 x 84 x 100mm



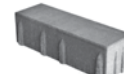
12<sup>1</sup>/<sub>2</sub> x 3<sup>5</sup>/<sub>16</sub> x 4"  
317 x 84 x 100mm



11 x 3<sup>5</sup>/<sub>16</sub> x 4"  
277 x 84 x 100mm



9<sup>3</sup>/<sub>8</sub> x 3<sup>5</sup>/<sub>16</sub> x 4"  
237 x 84 x 100mm



14 x 4<sup>1</sup>/<sub>2</sub> x 4"  
357 x 114 x 100mm



12<sup>1</sup>/<sub>2</sub> x 4<sup>1</sup>/<sub>2</sub> x 4"  
317 x 114 x 100mm



11 x 4<sup>1</sup>/<sub>2</sub> x 4"  
277 x 114 x 100mm



9<sup>3</sup>/<sub>8</sub> x 4<sup>1</sup>/<sub>2</sub> x 4"  
237 x 114 x 100mm

#### ADVANTAGES

##### PERMEABLE

Can be installed to allow water to flow through

##### DRIVE FRIENDLY

Can handle vehicular loads

Notes: **Special Order - Lead time is required, minimum quantities apply. Sold in full bundles only and is produced and sold on a required, refundable skid.** Custom finish and color options are available.

\* Weights and Square Feet may vary depending on plant of manufacture and finish. **Important: A urethane rubber paver mat must be used to prevent scuffing.** This product is optimized for mechanical installation. All measurements are nominal. Contact Unilock for more information.

Internal Use Only. EOL NY





### SPECIAL ORDER PRODUCT

OTHER FINISHES AVAILABLE BY SPECIAL ORDER  
PLEASE CONTACT YOUR TERRITORY MANAGER FOR MORE DETAILS

NATURAL

	STANDARD
<b>Bundle Type</b>	<b>RANDOM</b>
Thickness (mm)	<b>80MM</b>
Dimension mm	250MM X 250MM X 80MM
Dimension Imperial	9 7/8" X 9 7/8" X 3 1/8"

<b>SQFT PER</b>	Bundle	63.56
	Layer	9.08000
	Section	-
	Stone	0.50

<b>PER BUNDLE</b>	Layers	7.00
	Sections	-

<b>SOLDIER LNFT PER</b>	SqFt	-
	Section	-
	Layer	-
	Bundle	-

<b>SAILOR LNFT PER</b>	SqFt	-
	Section	-
	Layer	-
	Bundle	-

<b>UNITS PER</b>	SqFt	1.98
	Section	-
	Bundle	126.00

<b>LBS PER</b>	Layer	292
	Section	-
	Bundle	2,047



STANDARD  
9 7/8" x 9 7/8" x 3 1/8"  
250 x 250 x 80mm

### ADVANTAGES

#### PERMEABLE

Can be installed to allow water to flow through

#### DRIVE FRIENDLY

Can handle vehicular loads

Notes: Most standard colors are available by special order only and subject to minimum quantities. Contact your representative for details. This product is optimized for mechanical installation. **Sold in full bundles only** and is shipped on a refundable skid. All measurements are nominal. **Important:** Textured surfaces require a buffer between the plate compactor and the paver surface to prevent scuffing. Contact Unilock for information.

Internal Use Only. EOP UX/NY



GRANITE  
5 X 10 ONLY



SIERRA  
5 X 10 ONLY

OTHER FINISHES AVAILABLE BY SPECIAL ORDER;  
PLEASE CONTACT YOUR TERRITORY MANAGER FOR MORE DETAILS.

	10" X 10"	10" X 5"	5" X 5"
Bundle Type	SINGLE	SINGLE	SINGLE
Thickness (mm)	80MM	80MM	80MM
Dimension mm	240MM X 240MM X 80MM	120MM X 240MM X 80MM	120MM X 120MM X 80MM
Dimension Imperial	9 1/2" X 9 1/2" X 3 1/8"	4 3/4" X 9 1/2" X 3 1/8"	4 3/4" X 4 3/4" X 3 1/8"

SQFT PER	Bundle	86.60	75.95	74.59
	Layer	12.37000	10.85000	10.66000
	Section	-	-	-
	Stone	0.62	0.31	0.15

PER BUNDLE	Layers	7.00	7.00	7.00
	Sections	-	-	-

SOLDIER LNFT PER	SqFt	1.27	1.27	2.59
	Section	-	-	-
	Layer	15.75	13.78	27.56
	Bundle	110.24	96.46	192.91

SAILOR LNFT PER	SqFt	1.27	2.54	2.59
	Section	-	-	-
	Layer	15.75	27.56	27.56
	Bundle	110.24	192.91	192.91

UNITS PER	SqFt	1.62	3.23	6.57
	Section	-	-	-
	Bundle	140.00	245.00	490.00

LBS PER	Layer	443	388	381
	Section	-	-	-
	Bundle	3,099	2,717	2,669



LARGE SQUARE  
10 x 10 x 3 1/8"  
240 x 240 x 80mm  
**SPECIAL ORDER**



RECTANGLE  
10 x 5 x 3 1/8"  
120 x 240 x 80mm



SQUARE  
5 x 5 x 3 1/8"  
120 x 120 x 80mm  
**SPECIAL ORDER**

#### ADVANTAGES

##### PERMEABLE

Can be installed to allow water to flow through

##### DRIVE FRIENDLY

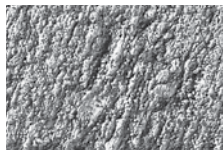
Can handle vehicular loads

Notes: \* Special Order - Lead time is required, minimum quantities apply. **Sold in full bundles only** and sold on a required, refundable skid. **Important:** A urethane rubber paver mat must be used to prevent scuffing. All measurements are nominal. Contact Unilock for more information.

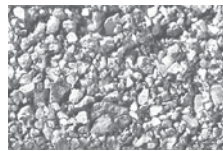
Internal Use Only. EPA UX/NY



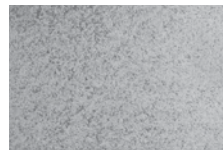
REVELA FINISH



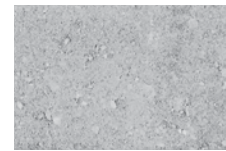
IL CAMPO® FINISH



SERIES™ FINISH



UMBRIANO® FINISH



PREMIER FINISH

**SPECIAL ORDER  
PRODUCT**

	3" X 12"	4" X 16"
<b>Bundle Type</b>	<b>SINGLE</b>	<b>SINGLE</b>
Thickness (mm)	<b>100MM</b>	<b>100MM</b>
Dimension mm	75MM X 300MM X 100MM	100MM X 400MM X 100MM
Dimension Imperial	3" X 11 7/8" X 3 7/8"	3 7/8" X 15 3/4" X 3 7/8"

<b>SQFT PER</b>	Bundle	63.94	62.00
	Layer	10.66000	10.33000
	Section	-	-
	Stone	0.24	0.43

<b>PER BUNDLE</b>	Layers	6.00	6.00
	Sections	-	-

<b>SOLDIER LNFT PER</b>	SqFt	1.02	0.76
	Section	-	-
	Layer	10.83	7.87
	Bundle	64.96	47.24

<b>SAILOR LNFT PER</b>	SqFt	4.06	3.05
	Section	-	-
	Layer	43.31	31.50
	Bundle	259.84	188.98

<b>UNITS PER</b>	SqFt	4.13	2.32
	Section	-	-
	Bundle	264.00	144.00

<b>LBS PER</b>	Layer	488	455
	Section	-	-
	Bundle	2,927	2,730



3 x 12 x 4"  
75 x 300 x 100mm  
**SPECIAL ORDER**



4 x 16 x 4"  
100 x 400 x 100mm  
**SPECIAL ORDER**

## ADVANTAGES

### PERMEABLE

Can be installed to allow water to flow through

### DRIVE FRIENDLY

Can handle vehicular loads

Notes: Most standard colors are available by special order only and subject to minimum quantities. Contact your representative for details. This product is optimized for mechanical installation. **Sold in full bundles only** and is shipped on a refundable skid. All measurements are nominal. **Important:** Textured surfaces require a buffer between the plate compactor and the paver surface to prevent scuffing. Contact Unilock for information.

Internal Use Only. ECP NY



SPECIAL ORDER  
PRODUCT

NATURAL

	STANDARD
Bundle Type	SINGLE
Thickness (mm)	80MM
Dimension mm	115MM X 230MM X 80MM
Dimension Imperial	4 5/8" X 9" X 3 1/8"

SQFT PER	Bundle	67.00
	Layer	9.57000
	Section	-
	Stone	0.27

PER BUNDLE	Layers	7.00
	Sections	-

SOLDIER LNFT PER	SqFt	-
	Section	-
	Layer	-
	Bundle	-

SAILOR LNFT PER	SqFt	-
	Section	-
	Layer	-
	Bundle	-

UNITS PER	SqFt	3.66
	Section	-
	Bundle	245.00

LBS PER	Layer	349
	Section	-
	Bundle	2,445



STANDARD  
9 x 4 5/8 x 3 1/8"  
230 x 115 x 80mm  
SPECIAL ORDER

ADVANTAGES

PERMEABLE

Can be installed to allow water to flow through

DRIVE FRIENDLY

Can handle vehicular loads

Notes: \*Special Order - Lead time is required, minimum quantities apply.  
Sold in full bundles only and is produced and sold on a required, refundable skid. This product is optimized for mechanical installation.  
All measurements are nominal. Contact Unilock for more information.

Internal Use Only. ECS NY

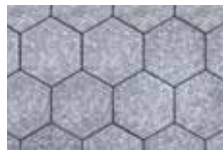




NOTTE  
SPECIAL ORDER



SABIA  
SPECIAL ORDER



NOTTE HEX  
SPECIAL ORDER



SABIA HEX  
SPECIAL ORDER

	3 UNIT	HEX
Bundle Type	RANDOM	SINGLE
Thickness (mm)	60MM	70MM
Dimension mm		200MM X 200MM X 70MM
Dimension Imperial		7 7/8" X 7 7/8" X 2 3/4"

SQFT PER	Bundle	94.14	73.92
	Layer	10.46000	9.24000
	Section	-	-
	Stone	1.31	0.39

PER BUNDLE	Layers	9.00	8.00
	Sections	-	-

SOLDIER LNFT PER	SqFt	-	-
	Section	-	-
	Layer	-	-
	Bundle	-	-

SAILOR LNFT PER	SqFt	0.85	-
	Section	-	-
	Layer	8.86	-
	Bundle	79.72	-

UNITS PER	SqFt	0.76	2.60
	Section	-	-
	Bundle	72.00	192.00

LBS PER	Layer	287	306
	Section	-	-
	Bundle	2,583	2,450

#### 3 UNIT RANDOM BUNDLE



LARGE RECTANGLE  
21 x 14 x 2 3/4"  
540 x 360 x 60mm



SQUARE  
14 x 14 x 2 3/4"  
360 x 360 x 60mm



SMALL RECTANGLE  
7 x 14 x 2 3/4"  
180 x 360 x 60mm



HEX  
8 x 8 x 2 3/4"  
200 x 200 x 70mm

#### ADVANTAGES

**EASYCLEAN™** EasyClean  
Factory sealed to provide integral  
surface protection from stains

**ARTISTA™**  
Boldly mottled color finish

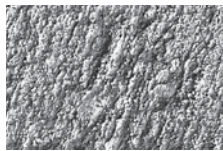
**DRIVE FRIENDLY**  
Can handle vehicular loads - Hex only

Notes: Most standard colors are available by special order only and subject to minimum quantities. Contact your representative for details. **Sold in full bundles only** and is produced and sold on a required, refundable skid. **Important: A urethane rubber paver mat must be used to prevent scuffing.** All measurements are nominal. Contact Unilock for more information.

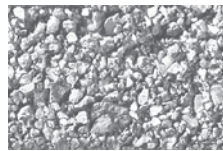
Internal Use Only. GRN ON



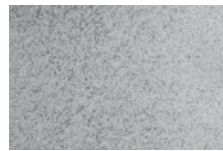
REVELA FINISH



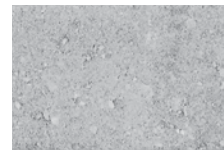
IL CAMPO® FINISH



SERIES™ FINISH



UMBRIANO® FINISH



PREMIER FINISH

**SPECIAL ORDER  
PRODUCT**

	70MM	80MM PERMEABLE
Bundle Type	SINGLE	SINGLE
Thickness (mm)	70MM	80MM
Dimension mm	200MM X 200MM X 70MM	200MM X 200MM X 80MM
Dimension Imperial	7 7/8" X 7 7/8" X 2 3/4"	7 7/8" X 7 7/8" X 3 1/8"

SQFT PER	Bundle	73.92	59.24
	Layer	9.24000	8.46000
	Section	-	-
	Stone	0.39	0.42

PER BUNDLE	Layers	8.00	7.00
	Sections	-	-

SOLDIER LNFT PER	SqFt	-	-
	Section	-	-
	Layer	-	-
	Bundle	-	-

SAILOR LNFT PER	SqFt	-	-
	Section	-	-
	Layer	-	-
	Bundle	-	-

UNITS PER	SqFt	2.60	2.36
	Section	-	-
	Bundle	192.00	140.00

LBS PER	Layer	306	310
	Section	-	-
	Bundle	2,450	2,167



HEX  
8 x 8 x 2 3/4"  
200 x 200 x 70mm  
**SPECIAL ORDER**



HEX - Permeable  
8 x 8 x 3 1/8"  
200 x 200 x 80mm  
**SPECIAL ORDER**

## ADVANTAGES

### DRIVE FRIENDLY

Can handle vehicular loads

Notes: Most standard colors are available by special order only and subject to minimum quantities. Contact your representative for details. **Sold in full bundles only** and is produced and sold on a required, refundable skid. **Important: A urethane rubber paver mat must be used to prevent scuffing.** All measurements are nominal. Contact Unilock for more information.

Internal Use Only. HEX NY



ALMOND GROVE

CHARCOAL

GRANITE

RUSTIC RED

SIERRA

	STANDARD
Bundle Type	SINGLE
Thickness (mm)	60MM
Dimension mm	100MM X 200MM X 60MM
Dimension Imperial	3 7/8" X 7 7/8" X 2 3/8"



STANDARD  
4 x 8 x 2 3/8"  
100 x 200 x 60mm

SQFT PER	Bundle	106.20
	Layer	-
	Section	17.70
	Stone	0.22

70MM AND  
80MM PAVERS  
ARE AVAILABLE  
SPECIAL ORDER

PER BUNDLE	Layers	-
	Sections	6.00

SOLDIER LNFT PER	SqFt	1.50
	Section	26.57
	Layer	-
	Bundle	159.45

SAILOR LNFT PER	SqFt	3.00
	Section	53.15
	Layer	-
	Bundle	318.90

UNITS PER	SqFt	4.58
	Section	81.00
	Bundle	486.00

LBS PER	Layer	-
	Section	478
	Bundle	2,868

ADVANTAGES

DRIVE FRIENDLY  
Can handle vehicular loads

Notes: All measurements are nominal. Contact Unilock for more information.

Internal Use Only. HOL UX





DARK CHARCOAL **NEW**



GRANITE



LIGHT GREY **NEW**



SANDSTONE

## SPECIAL ORDER PRODUCT

	4 X 8	7 X 14	8 X 16
<b>Bundle Type</b>	<b>SINGLE</b>	<b>SINGLE</b>	<b>SINGLE</b>
Thickness (mm)	<b>70MM</b>	<b>80MM</b>	<b>70MM</b>
Dimension mm	100MM X 200MM X 70MM	180MM X 360MM X 80MM	200MM X 400MM X 70MM
Dimension Imperial	3 7/8" X 7 7/8" X 2 3/4"	7" X 14 1/4" X 3 1/8"	7 7/8" X 15 3/4" X 2 3/4"

<b>SQFT PER</b>	Bundle	94.40	73.24	82.67
	Layer	11.80000	10.46000	10.33000
	Section	-	-	-
	Stone	0.22	0.70	0.86

<b>PER BUNDLE</b>	Layers	8.00	7.00	8.00
	Sections	-	-	-

<b>SOLDIER LNFT PER</b>	SqFt	1.50	0.85	0.76
	Section	-	-	-
	Layer	17.72	8.86	7.87
	Bundle	141.73	62.01	62.99

<b>SAILOR LNFT PER</b>	SqFt	3.00	1.69	1.52
	Section	-	-	-
	Layer	35.43	17.72	15.75
	Bundle	283.46	124.02	125.98

<b>UNITS PER</b>	SqFt	4.58	1.43	1.16
	Section	-	-	-
	Bundle	432.00	105.00	96.00

<b>LBS PER</b>	Layer	377	348	343
	Section	-	-	-
	Bundle	3,019	2,433	2,747



8 x 4 x 2 3/4"  
200 x 100 x 70mm  
Dark Charcoal only



14 x 7 x 3 1/8"  
360 x 180 x 80mm  
Dark Charcoal only  
**NEW**



16 x 8 x 2 3/4"  
400 x 200 x 70mm  
All colors

## ADVANTAGES

### BRUSHED FINISH

Graphically interesting etched lines

### DRIVE FRIENDLY

Can handle vehicular loads

Notes: \*Special Order - Lead time is required, minimum quantities apply. Sold in full bundles only and is produced and sold on a required, refundable skid. **Important:** A urethane rubber paver mat must be used to prevent scuffing. Please refer to the Polymeric Sand Best Practices and Important Notice on page 83. All measurements are nominal. Contact Unilock for more information.

Internal Use Only. ILC ON





DARK CHARCOAL



GRANITE BLEND **NEW**



SABLE BLEND

	STANDARD
<b>Bundle Type</b>	<b>SINGLE</b>
Thickness (mm)	<b>70MM</b>
Dimension mm	60MM X 240MM X 70MM
Dimension Imperial	2 3/8" X 9 1/2" X 2 3/4"



STANDARD  
9 1/2 x 2 3/8 x 2 3/4"  
240 x 60 x 70mm

<b>SQFT PER</b>	Bundle	89.28
	Layer	11.16000
	Section	-
	Stone	0.16

<b>PER BUNDLE</b>	Layers	8.00
	Sections	-

<b>SOLDIER LNFT PER</b>	SqFt	1.27
	Section	-
	Layer	14.17
	Bundle	113.39

<b>SAILOR LNFT PER</b>	SqFt	5.08
	Section	-
	Layer	56.69
	Bundle	453.54

<b>UNITS PER</b>	SqFt	6.45
	Section	-
	Bundle	576.00

<b>LBS PER</b>	Layer	357
	Section	-
	Bundle	2,859

## ADVANTAGES

### ANTIQUED FINISH™

Distressed, timeworn finish

### EASYCLEAN™ EasyClean

Factory sealed to provide integral surface protection from stains

### DRIVE FRIENDLY

Can handle vehicular loads

Notes: Sold in full bundles only and is produced and sold on a required, refundable skid. **Important:** A urethane rubber paver mat must be used to prevent scuffing. All measurements are nominal. Contact Unilock for more information.

Internal Use Only. MAT

# Natural Stone Sandstone



AUTUMN HARVEST



INDIAN COAST



STONE CLIFF GREY

*Suitable for pool decks, wood decks, patios, entrances and concrete overlays.*



36 x 24 x 7/8"  
900 x 600 x 22mm



24 x 24 x 7/8"  
600 x 600 x 22mm



24 x 18 x 7/8"  
600 x 450 x 22mm



24 x 12 x 7/8"  
600 x 300 x 22mm

## ADVANTAGES

### PEDESTRIAN FRIENDLY

Not recommended for vehicular

Bundle Type	SINGLE	SINGLE	SINGLE	SINGLE
	24 x 36	24 x 24	18 x 24	12 x 24
Thickness (mm)	22MM	22MM	22MM	22MM
Dimension mm	600mm x 900mm x 22mm	600mm x 600mm x 22mm	450mm x 600mm x 22mm	300mm x 600mm x 22mm
Dimension Imperial	23 5/8" x 35 1/2" x 0 7/8"	23 5/8" x 23 5/8" x 0 7/8"	17 3/4" x 23 5/8" x 0 7/8"	11 7/8" x 23 5/8" x 0 7/8"

SQFT PER	Crate	180.00	160.00	186.00	180.00
	Unit	6.00	4.00	3.00	2.00

UNITS PER	Crate	30.00	40.00	62.00	90.00
	SqFt	0.17	0.25	0.33	0.50

LBS PER	Unit	72	48	36	24
	Bundle	2,149	1,910	2,221	2,149

Notes: Unilock offers adjustable and stackable pedestal systems; please contact your Territory Manager for pricing and availability. Unilock recommends a solvent based sealer for natural stone. **Important:** Natural Stone is covered under Unilock's Transferable Lifetime Guarantee. All measurements are nominal. **Product is not intended for vehicular applications.**

# Natural Stone Sandstone - Coping



AUTUMN HARVEST



INDIAN COAST



STONE CLIFF GREY

*Suitable for pool decks, wood decks, patios, entrances and concrete overlays.*



**4' FULLNOSE**  
48 x 12 x 2"  
1200 x 300 x 50mm



**6' FULLNOSE**  
71 x 12 x 2"  
1830 x 300 x 50mm  
INDIAN COAST ONLY



**4' ROCK FACE COPING**  
48 x 12 x 2"  
1200 x 300 x 50mm



**6' ROCK FACE COPING**  
71 x 12 x 2"  
1830 x 300 x 50mm

## ADVANTAGES

### PEDESTRIAN FRIENDLY

Not recommended for vehicular

Bundle Type	SINGLE	SINGLE	SINGLE	SINGLE	SINGLE	SINGLE
	48" X 12" FULLNOSE COPING	48" X 12" ROCK FACE COPING	48" X 16" ROCK FACE COPING	72" X 12" FULLNOSE COPING	72" X 12" ROCK FACE COPING	72" X 16" ROCK FACE COPING
Thickness (mm)	50MM	50MM	50MM	50MM	50MM	50MM
Dimension mm	1,200mm x 50mm x 300mm	1,200mm x 50mm x 300mm	1,200mm x 50mm x 400mm	1,800mm x 50mm x 300mm	1,800mm x 50mm x 300mm	1,800mm x 50mm x 400mm
Dimension Imperial	47 1/4" x 2" x 11 7/8"	47 1/4" x 2" x 11 7/8"	47 1/4" x 2" x 15 3/4"	70 7/8" x 2" x 11 7/8"	70 7/8" X 2" X 11 7/8"	70 7/8" X 2" X 15 3/4"

LNFT PER	Crate	80.00	80.00	64.00	72.00	72.00	60.00
	Unit	-	-	-	6.00	6.00	6.00

UNITS PER	Crate	20.00	20.00	16.00	12.00	12.00	10.00
	SqFt	-	-	-	-	-	-

LBS PER	Unit	106	106	141	159	159	209
	Bundle	2,116	2,116	2,258	1,905	1,905	2,094

Notes: Unilock offers adjustable and stackable pedestal systems; please contact your Territory Manager for pricing and availability. Unilock recommends a solvent based sealer for natural stone. **Important:** Natural Stone is covered under Unilock's Transferable Lifetime Guarantee. All measurements are nominal. **Product is not intended for vehicular applications.**

# Natural Stone Sandstone - Steps & Pillar Caps



AUTUMN HARVEST



INDIAN COAST



STONE CLIFF GREY

## ADVANTAGES

### PEDESTRIAN FRIENDLY

Not recommended for vehicular

*Suitable for pool decks, wood decks, patios, entrances and concrete overlays.*



### 4' ROCK FACE STEP

48 x 16 x 5 7/8"  
1200 x 400 x 150mm



### 6' ROCK FACE STEP

72 x 16 x 5 7/8"  
1830 x 400 x 150mm



### 24" PILLAR CAP

24 x 24 x 2 5/8"  
600 x 600 x 64mm



### 28" PILLAR CAP

28 x 28 x 3"  
725 x 725 x 75mm

Bundle Type	SINGLE	SINGLE	SINGLE	SINGLE
	ROCK FACE STEP - 16 x 48	ROCK FACE STEP - 16 x 72	24 X 24 PILLAR CAP	28 X 28 PILLAR CAP
Thickness (mm)	150MM	150MM	65MM	75MM
Dimension mm	400mm x 1,200mm x 150mm	400mm x 1,830mm x 150mm	600mm x 600mm x 65mm	725mm x 725mm x 75mm
Dimension Imperial	15 3/4" x 47 1/4" x 5 7/8"	15 3/4" x 72" x 5 7/8"	23 5/8" x 23 5/8" x 2 5/8"	28 5/8" x 28 5/8" x 3"



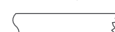

FCFT PER	Crate	32.00	32.00	-	-
	Layer	-	-	-	-
	Unit	-	-	-	-

LNFT PER	Crate	24.00	24.00	-	-
	Unit	4.00	6.00	-	-

UNITS PER	Crate	6.00	4.00	14.00	12.00
	SqFt	-	-	-	-

LBS PER	Unit	421	628	137	209
	Bundle	2,526	2,513	1,914	2,513

Notes: Unilock offers adjustable and stackable pedestal systems; please contact your Territory Manager for pricing and availability. Unilock recommends a solvent based sealer for natural stone. **Important:** Natural Stone is covered under Unilock's Transferable Lifetime Guarantee. All measurements are nominal. **Product is not intended for vehicular applications.**

COPING, STEP AND PILLAR CAP	Available Sizes	Autumn Harvest	Indian Coast	Stone Cliff Grey	Black River	Hearthstone	Winter Mist
Natural Edge Coping 	12" x 48" x 2"	✓	✓	✓	✓		
	12" x 72" x 2"	✓	✓	✓	✓		
	16" x 48" x 2"	✓	✓	✓	✓		
	16" x 72" x 2"	✓	✓	✓	✓		
Fullnose Coping 	12" x 48" x 2"	✓	✓	✓	✓		
	12" x 72" x 2"	✓	✓	✓	✓		
Natural Edge Step 	16" x 48" x 6"	✓	✓	✓	✓		
	16" x 72" x 6"	✓	✓	✓	✓		
Pillar Cap 	24" x 24" x 2.5"	✓	✓	✓	✓	✓	✓
	28" x 28" x 3"	✓	✓	✓	✓		



# Natural Stone Limestone



BLACK RIVER



HEARTHSTONE



WINTER MIST

*Suitable for pool decks, wood decks, patios, entrances and concrete overlays.*



35 1/2 x 23 5/8 x 7/8"  
900 x 600 x 22mm



23 5/8 x 23 5/8 x 7/8"  
600 x 600 x 22mm



23 5/8 x 17 3/4 x 7/8"  
600 x 450 x 22mm



23 5/8 x 11 7/8 x 7/8"  
600 x 300 x 22mm

## ADVANTAGES

### PEDESTRIAN FRIENDLY

Not recommended for vehicular

Bundle Type	SINGLE	SINGLE	SINGLE	SINGLE
	24 x 36	24 x 24	18 x 24	12 x 24
Thickness (mm)	22MM	22MM	22MM	22MM
Dimension mm	600mm x 900mm x 22mm	600mm x 600mm x 22mm	450mm x 600mm x 22mm	300mm x 600mm x 22mm
Dimension Imperial	23 5/8" x 35 1/2" x 0 7/8"	23 5/8" x 23 5/8" x 0 7/8"	17 3/4" x 23 5/8" x 0 7/8"	11 7/8" x 23 5/8" x 0 7/8"

SQFT PER	Crate	180.00	160.00	186.00	180.00
	Unit	6.00	4.00	3.00	2.00

UNITS PER	Crate	30.00	40.00	62.00	90.00
	SqFt	0.17	0.25	0.33	0.50

LBS PER	Unit	72	48	36	24
	Bundle	2,149	1,910	2,221	2,149

Notes: Unilock offers adjustable and stackable pedestal systems; please contact your Territory Manager for pricing and availability. Due to natural oxidation, the Black River Limestone will require sealing to maintain its deep rich color. Unilock recommends a solvent based sealer for natural stone. **Important:** Natural Stone is covered under Unilock's Transferable Lifetime Guarantee. All measurements are nominal. **Product is not intended for vehicular applications.**

# Natural Stone Limestone - Coping, Pillar Caps & Steps



BLACK RIVER



4' ROCK FACE STEP  
48 x 16 x 5 7/8"  
1200 x 410 x 150mm



24" PILLAR CAP  
24 x 24 x 2 5/8"  
600 x 600 x 64mm

28" PILLAR CAP  
28 x 28 x 3"  
710 x 710 x 75mm

Bundle Type	SINGLE	SINGLE	SINGLE	SINGLE
	48" X 16" STEP	72" X 16" STEP	24" PILLAR CAP	28" PILLAR CAP
Thickness (mm)	150MM	150MM	64MM	64MM
Dimension mm	400mm x 1,200mm x 150mm	1,800mm x 150mm x 400mm	600mm x 600mm x 64mm	725mm x 725mm x 75mm
Dimension Imperial	15 3/4" x 47 1/4" x 5 7/8"	70 7/8" x 5 7/8" x 15 3/4"	23 5/8" x 23 5/8" x 2 5/8"	28" x 28" x 3"

SQFT PER	Crate	32.00	32.00	-	-
	Unit	5.33	8.00	-	-

LNFT PER	Crate	24.00	24.00	-	-
	Unit	4.00	6.00	-	-

UNITS PER	Crate	6.00	4.00	14.00	12.00
	SqFt	0.19	0.13	-	-

LBS PER	Unit	421	628	137	186
	Bundle	2,526	2,513	1,914	2,232



4' FULLNOSE  
48 x 12 x 2"  
1200 x 300 x 50mm



6' FULLNOSE  
72 x 12 x 2"  
1800 x 300 x 50mm

4' ROCK FACE COPING  
48 x 12 x 2"  
1200 x 300 x 50mm

4' ROCK FACE COPING  
48 x 16 x 2"  
1200 x 400 x 50mm

6' ROCK FACE COPING  
72 x 16 x 2"  
1800 x 400 x 50mm

6' ROCK FACE COPING  
72 x 12 x 2"  
1800 x 300 x 50mm

Bundle Type	SINGLE	SINGLE	SINGLE	SINGLE	SINGLE	SINGLE
	48" X 12" ROCK FACE COPING	48" X 12" FULLNOSE COPING	48" X 16" ROCK FACE COPING	72" X 12" FULLNOSE COPING	72" X 12" ROCK FACE COPING	72" X 16" ROCK FACE COPING
Thickness (mm)	50MM	50MM	50MM	50MM	50MM	50MM
Dimension mm	300mm x 1,200mm x 50mm	300mm x 1,200mm x 50mm	400mm x 1,200mm x 50mm	300mm x 50mm x 1,800mm	300mm x 50mm x 1,800mm	400mm x 50mm x 1,800mm
Dimension Imperial	11 7/8" x 47 1/4" x 2"	11 7/8" x 47 1/4" x 2"	15 3/4" x 47 1/4" x 2"	11 7/8" x 2" x 70 7/8"	11 7/8" X 2" X 70 7/8"	15 3/4" X 2" X 70 7/8"

LNFT PER	Crate	80.00	80.00	64.00	72.00	72.00	60.00
	Unit	4.00	4.00	4.00	6.00	6.00	6.00

UNITS PER	Crate	20.00	20.00	16.00	12.00	12.00	10.00
	SqFt	-	-	-	-	-	-

LBS PER	Unit	106	106	141	159	159	209
	Bundle	2,116	2,116	2,258	1,905	1,905	2,094

Notes: Unilock offers adjustable and stackable pedestal systems; please contact your Territory Manager for pricing and availability. Due to natural oxidation, the Black River Limestone will require sealing to maintain its deep rich color. Unilock recommends a solvent based sealer for natural stone. **Important:** Natural Stone is covered under Unilock's Transferable Lifetime Guarantee. All measurements are nominal. **Product is not intended for vehicular applications.**



GRANITE



NATURAL

SPECIAL ORDER  
PRODUCT

	CLASSIC
Bundle Type	SINGLE
Thickness (mm)	80MM
Dimension mm	260mm x 260mm x 80mm
Dimension Imperial	10 1/4" x 10 1/4" x 3 1/8"

SQFT PER	Bundle	67.66
	Layer	9.67000
	Section	-
	Stone	0.54

PER BUNDLE	Layers	7.00
	Sections	-

SOLDIER LNFT PER	SqFt	-
	Section	-
	Layer	-
	Bundle	-

SAILOR LNFT PER	SqFt	-
	Section	-
	Layer	-
	Bundle	-

UNITS PER	SqFt	1.86
	Section	-
	Bundle	126.00

LBS PER	Layer	359
	Section	-
	Bundle	2,516



STANDARD  
10¼ x 10¼ x 3⅛"  
260 x 260 x 80mm  
SPECIAL ORDER

ADVANTAGES

DRIVE FRIENDLY

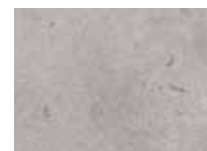
Can handle vehicular loads

Notes: Special Order - Lead time is required, minimum quantities apply. Sold in full bundles only. Weights may vary depending on finish. This product is optimized for mechanical installation. All measurements are nominal. Important: Contact Unilock for information.

Internal Use Only. OPL UX



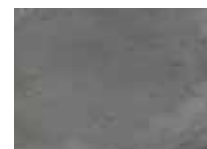
TRAVSTONE BEIGE



TRAVSTONE GRAY  
**NEW** COPING ONLY



TRAVSTONE NOCE



GOTHAM NERO



ARBOR BIANCO



ARBOR GRAY



ARBOR NATURAL



GOTHAM BEIGE



GOTHAM BIANCO  
**NEW**



GOTHAM GRAY

Bundle Type	SINGLE	SINGLE
	Arbor Size	Square
Thickness (mm)	<b>20MM</b>	<b>20MM</b>
Dimension mm	400mm x 800mm x 20mm	600mm x 600mm x 20mm
Dimension Imperial	15 3/4" x 31 1/2" x 0 7/8"	23 5/8" x 23 5/8" x 0 7/8"

SQFT PER	Pallet	255.75	268.71
	Box	7.75	6.89
	Unit	3.88	3.45

PER PALLET	Layer	-	-
	Unit	66.00	78.00

LNFT PER	Pallet	-	-
	Unit	-	-

UNITS PER	Pallet	66.00	78.00
	Box	2.00	2.00
	SqFt	-	-

LBS PER	Unit	35	32
	SqFt	9	9
	Box	70	64
	Pallet	2,318	2,511



Arbor Bianco, Arbor Grey & Arbor Natural

#### ARBOR SIZE ONLY

31½ x 15¾ x 7⁄8"  
800 x 400 x 20mm



Gotham & Travestone Colors

#### SQUARE SIZE ONLY

23⅝ x 23⅝ x 7⁄8"  
600 x 600 x 20mm

*Suitable for pool decks, wood decks, patios, entrances and concrete overlays.*

#### ADVANTAGES

##### PEDESTRIAN FRIENDLY

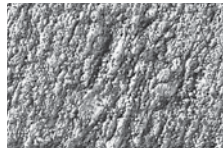
Not recommended for vehicular

Notes: **Important:** A urethane rubber paver mat must be used to prevent scuffing. All measurements are nominal. Contact Unilock for more information. Porcelain Tile is not covered by Unilock's Lifetime Guarantee. Please contact your Territory Manager for more information.

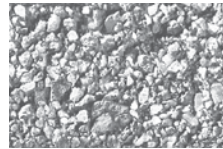




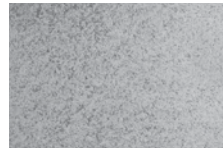
REVELA FINISH



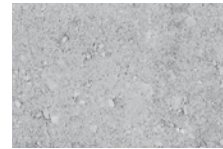
IL CAMPO® FINISH



SERIES™ FINISH



UMBRIANO® FINISH



PREMIER FINISH



12 x 3 x 4"  
300 x 75 x 100mm  
**SPECIAL ORDER**



12 x 4 x 4"  
300 x 100 x 100mm  
**SPECIAL ORDER**



16 x 4 x 4"  
400 x 100 x 100mm  
**SPECIAL ORDER**



24 x 6 x 2 3/4"  
600 x 150 x 70mm  
**SPECIAL ORDER**



24 x 8 x 4"  
600 x 200 x 100mm  
**SPECIAL ORDER**

**SPECIAL ORDER  
PRODUCT**

	3 X 12	4 X 12	4 X 16	6 X 24	8 X 24
Bundle Type	SINGLE	SINGLE	SINGLE	SINGLE	SINGLE
Thickness (mm)	100MM	100MM	100MM	70MM	100MM
Dimension mm	75MM X 300MM X 100MM	100MM X 300MM X 100MM	100MM X 400MM X 100MM	150MM X 600MM X 70MM	200MM X 600MM X 100MM
Dimension Imperial	3" X 11 7/8" X 3 7/8"	3 7/8" X 11 7/8" X 3 7/8"	3 7/8" X 15 3/4" X 3 7/8"	5 7/8" X 23 5/8" X 2 3/4"	7 7/8" X 23 5/8" X 3 7/8"

SQFT PER	Bundle	63.94	69.76	62.00	93.00	62.00
	Layer	10.66000	11.63000	10.33000	11.63000	10.33000
	Section	-	-	-	-	-
	Stone	0.24	0.32	0.43	0.97	1.29

PER BUNDLE	Layers	6.00	6.00	6.00	8.00	6.00
	Sections	-	-	-	8.00	-

SOLDIER LNFT PER	SqFt	1.35	1.02	0.76	0.51	0.51
	Section	-	-	-	-	-
	Layer	14.44	11.81	7.87	5.91	5.25
	Bundle	86.61	70.87	47.24	47.24	31.50

SAILOR LNFT PER	SqFt	4.06	3.05	3.05	2.03	1.52
	Section	-	-	-	-	-
	Layer	43.31	35.43	31.50	23.62	15.75
	Bundle	259.84	212.60	188.98	188.98	94.49

UNITS PER	SqFt	4.13	3.10	2.32	1.03	0.77
	Section	-	-	-	-	-
	Bundle	264.00	216.00	144.00	96.00	48.00

LBS PER	Layer	483	532	455	372	478
	Section	-	-	-	-	-
	Bundle	2,898	3,191	2,730	2,978	2,869

Notes: **SPECIAL ORDER** - Lead time required. **Most standard colors are available by special order only and subject to minimum quantities.** Contact your representative for details. **Sold in full bundles only.**  
See your Unilock Sales Representative for choices of colors and finishes to complement your design requirements. All measurements are nominal.

Internal Use Only. PMD NY



DAWN MIST



PEBBLE TAUPE



SMOKE SHALE



DAWN MIST/ PEBBLE TAUPE  
Sold Separately/ Blended on Site

Bundle Type	SINGLE	RANDOM - FULL BUNDLE	RANDOM - HALF BUNDLE
	<b>LARGE RECTANGLE</b>		
Thickness (mm)	<b>60MM</b>	<b>60MM</b>	<b>60MM</b>
Dimension mm	302mm x 528mm x 60mm		
Dimension Imperial	11 7/8" x 20 7/8" x 2 3/8"		

<b>SQFT PER</b>	Bundle	82.39	90.30	45.15
	Layer	10.30000	11.29000	11.29000
	Section	-	-	-
	Stone	1.72	0.56	0.56

<b>PER BUNDLE</b>	Layers	8.00	8.00	4.00
	Sections	-	-	-

<b>SOLDIER LNFT PER</b>	SqFt	0.58	-	-
	Section	-	-	-
	Layer	5.94	-	-
	Bundle	47.56	-	-

<b>SAILOR LNFT PER</b>	SqFt	1.01	1.31	1.31
	Section			
	Layer	10.39	14.78	14.78
	Bundle	83.15	118.22	59.11

<b>UNITS PER</b>	SqFt	0.58	1.77	1.77
	Section	-	-	-
	Bundle	48.00	160.00	80.00

<b>LBS PER</b>	Layer	301	309	322
	Section	-	-	-
	Bundle	2,411	2,472	1,287

### 3 UNIT RANDOM BUNDLE



**RECTANGLE**  
12 x 9 x 2 3/8"  
300 x 226 x 60mm



**SQUARE**  
9 x 9 x 2 3/8"  
226 x 226 x 60mm



**SMALL RECTANGLE**  
9 x 6 x 2 3/8"  
226 x 150 x 60mm



**LARGE RECTANGLE**  
21 x 12 x 2 3/8"  
528 x 302 x 60mm  
Sold Separately

### ADVANTAGES

#### REALA™

Cast from natural stone

#### ULTIMA™

Up to 4x stronger than poured-in-place concrete

#### DRIVE FRIENDLY

Random Bundle can handle vehicular loads

Notes: **Sold as full bundles or half bundles only** on a refundable skid. There is a 48 hour lead time required on all half bundles; half bundles are also subject to a fee. Half bundles are Special Order with lead time required. All measurements are nominal. **Important:** Textured surfaces require a buffer between the plate compactor and the paver surface to prevent scuffing. [Read the Polymeric Sand advisory and review Polymeric Sand Usage chart on page 83.](#) Contact Unilock for information.

Internal Use Only. RIC ON



CREMO



MIDNIGHT CHARCOAL



MOCHA BROWN

**SPECIAL ORDER  
PRODUCT**

Bundle Type	SINGLE
Thickness (mm)	<b>70MM</b>
Dimension mm	200mm x 400mm x 70mm
Dimension Imperial	7 7/8" x 15 3/4" x 2 3/4"



16 x 8 x 2 3/4"  
400 x 200 x 70mm  
**SPECIAL ORDER**

<b>SQFT PER</b>	Bundle	82.67
	Layer	10.33000
	Section	-
	Stone	0.86

<b>PER BUNDLE</b>	Layers	8.00
	Sections	-

<b>SOLDIER LNFT PER</b>	SqFt	0.76
	Section	-
	Layer	7.87
	Bundle	62.99

<b>SAILOR LNFT PER</b>	SqFt	1.52
	Section	-
	Layer	15.75
	Bundle	125.98

<b>UNITS PER</b>	SqFt	1.16
	Section	-
	Bundle	96.00

<b>LBS PER</b>	Layer	331
	Section	-
	Bundle	2,647

#### ADVANTAGES

**EASYCLEAN™**  EasyClean™

Factory sealed to provide integral surface protection from stains

#### DRIVE FRIENDLY

Can handle vehicular loads

Notes: **SPECIAL ORDER** - Lead time required. **Sold as full bundles only** on a refundable skid. Product is shipped on skids. Colors shown should be used only as a guide. Colors should always be chosen from actual samples. All measurements are nominal. Important: Textured surfaces require a buffer between the plate compactor and the paver surface to prevent scuffing. [Read the Polymeric Sand advisory on page 83.](#)

Internal Use Only. SEN ON



BLACK GRANITE

Bundle Type	SINGLE	SINGLE
Thickness (mm)	70MM	70MM
Dimension mm	100mm x 200mm x 70mm	150mm x 150mm x 70mm
Dimension Imperial	3 7/8" x 7 7/8" x 2 3/4"	5 7/8" x 5 7/8" x 2 3/4"

SQFT PER	Bundle	94.40	81.36
	Layer	11.80000	10.17000
	Section	-	-
	Stone	0.22	0.21

PER BUNDLE	Layers	8.00	8.00
	Sections	-	-

SOLDIER LNFT PER	SqFt	1.50	2.37
	Section	-	-
	Layer	17.72	24.11
	Bundle	141.76	192.91

SAILOR LNFT PER	SqFt	3.00	2.37
	Section	-	-
	Layer	35.43	24.11
	Bundle	283.44	192.91

UNITS PER	SqFt	4.58	4.72
	Section	-	-
	Bundle	432.00	384.00

LBS PER	Layer	377	326
	Section	-	-
	Bundle	3,019	2,605



4 x 8 x 2 3/4"  
100 x 200 x 70mm



6 x 6 x 2 3/4"  
100 x 200 x 70mm

## ADVANTAGES

Granite, Quartz and Marble surface materials

## DRIVE FRIENDLY

Can handle vehicular loads

Notes: **Important:** Textured surfaces require a buffer between the plate compactor and the paver surface to prevent scuffing. Please refer to the Polymeric Sand Best Practices and Important Notice on page 83.

Internal Use Only. S3K NY





**SPECIAL ORDER  
PRODUCT**

PEPPERED GRANITE

Bundle Type	RANDOM
Thickness (mm)	60MM
Dimension mm	
Dimension Imperial	

SQFT PER	Bundle	94.14
	Layer	10.46000
	Section	-
	Stone	1.31

PER BUNDLE	Layers	9.00
	Sections	-

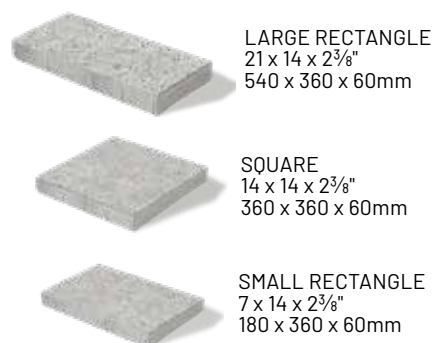
SOLDIER LNFT PER	SqFt	-
	Section	-
	Layer	-
	Bundle	-

SAILOR LNFT PER	SqFt	0.85
	Section	-
	Layer	8.86
	Bundle	79.72

UNITS PER	SqFt	0.76
	Section	-
	Bundle	72.00

LBS PER	Layer	282
	Section	-
	Bundle	2,538

## 3 UNIT RANDOM BUNDLE SPECIAL ORDER



## ADVANTAGES

Granite, Quartz and Marble surface materials

## PEDESTRIAN FRIENDLY

Not recommended for vehicular

Notes: **Product sold in full bundles only.** Important: Textured surfaces require a buffer between the plate compactor and the paver surface to prevent scuffing. Please refer to the Polymeric Sand Best Practices and Important Notice on page 83.

Internal Use Only. SER NY



CHAMOIS



MEDIUM GREY

**SPECIAL ORDER  
PRODUCT**



## Pedestal System

Contact your local Unilock Rep for more information.

Bundle Type	SINGLE
Thickness (mm)	50MM
Dimension mm	606mm x 606mm x 50mm
Dimension Imperial	23 7/8" x 23 7/8" x 2"

SQFT PER	Bundle	80.00
	Layer	8.00000
	Section	-
	Stone	4.00

PER BUNDLE	Layers	10.00
	Sections	-

SOLDIER LNFT PER	SqFt	0.50
	Section	-
	Layer	4.00
	Bundle	40.00

SAILOR LNFT PER	SqFt	0.50
	Section	-
	Layer	4.00
	Bundle	40.00

UNITS PER	SqFt	0.25
	Section	-
	Bundle	20.00

LBS PER	Layer	178
	Section	-
	Bundle	1,784



24 x 24 x 2"  
606 x 606 x 50mm  
**SPECIAL ORDER**

*Perfect for roof decks  
and other raised floor  
applications.*

## ADVANTAGES

### PEDESTRIAN FRIENDLY

Not recommended for vehicular use

Notes: **SPECIAL ORDER** - Lead time required. **Product sold in full bundles only**, and is produced and sold on a required and refundable skid. Product is not intended for vehicular applications. Unilock offers adjustable and stackable pedestal systems; please contact your Territory Manager for pricing and availability. All measurements are nominal.

Internal Use Only. SKY CH



BAVARIAN BLEND



STEEL MOUNTAIN

Bundle Type	RANDOM - SMOOTH
Thickness (mm)	70MM
Dimension mm	
Dimension Imperial	

SQFT PER	Bundle	88.61
	Layer	11.08000
	Section	-
	Stone	0.92

PER BUNDLE	Layers	8.00
	Sections	-

SOLDIER LNFT PER	SqFt	-
	Section	-
	Layer	-
	Bundle	-

SAILOR LNFT PER	SqFt	-
	Section	-
	Layer	-
	Bundle	-

UNITS PER	SqFt	1.08
	Section	-
	Bundle	96.00

LBS PER	Layer	355
	Section	-
	Bundle	2,838

## 3 UNIT RANDOM BUNDLE



**LARGE RECTANGLE**  
16½ x 13¾ x 2¾"  
420 x 350 x 70mm



**MEDIUM RECTANGLE**  
13½ x 8¼ x 2¾"  
350 x 210 x 70mm



**SMALL RECTANGLE**  
8¼ x 6⅞ x 2¾"  
210 x 173 x 70mm

## ADVANTAGES

### PERMEABLE

Can be installed to allow water to flow through

### DRIVE FRIENDLY

Can handle vehicular use

Notes: **Sold in full bundles only.** Permeable - can be installed to allow water to flow through. All measurements are nominal. **Important:** Textured surfaces require a buffer between the plate compactor and the paver surface to prevent scuffing.

Internal Use Only. THB UX



BURGUNDY RED



BURNT CLAY



OLD OAK



BASALT



HERITAGE RED



HERITAGE CLAY



BURGUNDY RED/  
BURNT CLAY/OLD OAK  
Sold Separately/  
Blended on Site



HERITAGE  
2 COLOR BLEND  
Sold Separately/  
Blended on Site

Bundle Type	STANDARD - FULL BUNDLE	STANDARD - HALF BUNDLE
Thickness (mm)	70MM	70MM
Dimension mm	100mm x 250mm x 70mm	100mm x 250mm x 70mm
Dimension Imperial	3 7/8" x 9 7/8" x 2 3/4"	3 7/8" x 9 7/8" x 2 3/4"

SQFT PER	Bundle	88.41	44.21
	Layer	11.05000	11.05000
	Section	-	--
	Stone	0.28	0.28

PER BUNDLE	Layers	8.00	4.00
	Sections	-	-

SOLDIER LNFT PER	SqFt	1.19	1.19
	Section	-	-
	Layer	13.12	13.12
	Bundle	104.99	52.49

SAILOR LNFT PER	SqFt	2.97	2.97
	Section	-	-
	Layer	32.81	32.81
	Bundle	262.47	131.23

UNITS PER	SqFt	3.62	3.62
	Section	-	-
	Bundle	320.00	160.00

LBS PER	Layer	361	364
	Section	-	-
	Bundle	2,888	1,457



STANDARD  
9 7/8" x 3 7/8" x 2 3/4"  
250 x 100 x 70mm

## ADVANTAGES

### PERMEABLE

Can be installed to allow water to flow through

### REALA™

Cast from historic brick

### ULTIMA™

Up to 4x stronger than poured-in-place concrete

### DRIVE FRIENDLY

Can handle vehicular loads

Notes: **Sold in full and half bundles** and is produced and sold on a required, refundable skid. **Half bundles require 48 hours lead time.** **Important:** A urethane rubber paver mat must be used to prevent scuffing. For permeable installations, Unilock recommends using granite chips for joint filler. **For traditional applications, please refer to the Polymeric Sand Best Practices and Important Notice on page 83.** All measurements are nominal. Contact Unilock for more information.

Internal Use Only, TWN ON





CHARCOAL  
6 X 9 ONLY



ALMOND GROVE



FOSSIL



NEW YORK BLEND



TUSCANY



SIERRA



STEEL MOUNTAIN

Bundle Type	SQUARE	RECTANGLE
Thickness (mm)	60MM	60MM
Dimension mm	150mm x 150mm x 60mm	150mm x 230mm x 60mm
Dimension Imperial	5 7/8" x 5 7/8" x 2 3/8"	5 7/8" x 9" x 2 3/8"

SQFT PER	Bundle	116.00	125.00
	Layer	11.60000	12.50000
	Section	-	-
	Stone	0.28	0.42

PER BUNDLE	Layers	10.00	10.00
	Sections	-	-

SOLDIER LNFT PER	SqFt	1.78	1.18
	Section	-	-
	Layer	20.67	14.76
	Bundle	206.69	147.64

SAILOR LNFT PER	SqFt	1.78	1.81
	Section	-	-
	Layer	20.67	22.64
	Bundle	206.69	226.38

UNITS PER	SqFt	3.62	2.40
	Section	-	-
	Bundle	420.00	300.00

LBS PER	Layer	325	350
	Section	-	-
	Bundle	3,247	3,500



SQUARE  
6 x 6 x 2 3/8"  
150 x 150 x 60mm



RECTANGLE  
6 x 9 x 2 3/8"  
150 x 230 x 60mm

**NOTE - RECTANGLE NOW HAS 10 LAYERS PER BUNDLE**

## ADVANTAGES

### DRIVE FRIENDLY

Can handle vehicular loads

Notes: All measurements are nominal. Contact Unilock for information. Important: Textured surfaces require a buffer between the plate compactor and the paver surface to prevent scuffing.

Internal Use Only. TRN NY



ALMOND GROVE



GRANITE BLEND



SIERRA

	3 UNIT
Bundle Type	RANDOM
Thickness (mm)	60MM
Dimension mm	
Dimension Imperial	

SQFT PER	Bundle	108.99
	Layer	10.90000
	Section	-
	Stone	0.45

PER BUNDLE	Layers	10.00
	Sections	-

SOLDIER LNFT PER	SqFt	0.81
	Section	-
	Layer	8.86
	Bundle	88.58

SAILOR LNFT PER	SqFt	1.63
	Section	-
	Layer	17.72
	Bundle	177.17

UNITS PER	SqFt	2.20
	Section	-
	Bundle	240.00

LBS PER	Layer	296
	Section	-
	Bundle	2,960

## 3 UNIT RANDOM BUNDLE



LARGE RECTANGLE  
8<sup>7</sup>/<sub>8</sub> x 13<sup>1</sup>/<sub>4</sub> x 2<sup>3</sup>/<sub>8</sub>"  
225 x 338 x 60mm



SQUARE  
8<sup>7</sup>/<sub>8</sub> x 8<sup>7</sup>/<sub>8</sub> x 2<sup>3</sup>/<sub>8</sub>"  
225 x 225 x 60mm



SMALL RECTANGLE  
4<sup>1</sup>/<sub>2</sub> x 8<sup>7</sup>/<sub>8</sub> x 2<sup>3</sup>/<sub>8</sub>"  
112 x 225 x 60mm

## ADVANTAGES

### DRIVE FRIENDLY

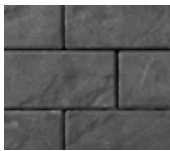
Can handle vehicular loads

Notes: **Sold in full bundles only.** All measurements are nominal. Important: Textured surfaces require a buffer between the plate compactor and the paver surface to prevent scuffing. Contact Unilock for information.

Internal Use Only. TRE UX



**BROWN**  
4½ x 9 ONLY



**CHARCOAL**  
4½ x 9 ONLY



**ALMOND GROVE**



**FOSSIL**



**NEW YORK BLEND**



**SIERRA**



**STEEL MOUNTAIN**

		3 UNIT	SMALL RECTANGLE
Bundle Type		RANDOM	SINGLE
Thickness (mm)		60MM	60MM
Dimension mm		112MM X 225MM X 60MM	
Dimension Imperial		4 1/2" X 8 7/8" X 2 3/8"	

SQFT PER	Bundle	108.99	108.99
	Layer	10.90000	10.90000
	Section	-	-
	Stone	0.44	0.27

PER BUNDLE	Layers	10.00	10.00
	Sections	-	-

SOLDIER LNFT PER	SqFt	-	1.35
	Section	-	-
	Layer	-	14.76
	Bundle	-	147.64

SAILOR LNFT PER	SqFt	-	2.71
	Section	-	-
	Layer	-	29.53
	Bundle	-	295.28

UNITS PER	SqFt	2.29	3.67
	Section	-	-
	Bundle	250.00	400.00

LBS PER	Layer	302	305
	Section	-	-
	Bundle	3,015	3,050

## 3 UNIT RANDOM BUNDLE



**LARGE RECTANGLE**  
13½ x 9 x 2⅜"  
342.5 x 226 x 60mm



**SQUARE**  
9 x 9 x 2⅜"  
226 x 226 x 60mm



**SMALL RECTANGLE**  
4⅓ x 9 x 2⅜"  
109.5 x 226 x 60mm



**SMALL RECTANGLE**  
4⅓ x 8⅞ x 2⅜"  
109.5 x 225 x 60mm

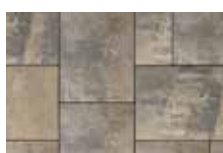
## ADVANTAGES

### DRIVE FRIENDLY

Can handle vehicular loads

Notes: **Random bundles sold in full bundles only.** All measurements are nominal. Important: Textured surfaces require a buffer between the plate compactor and the paver surface to prevent scuffing. Contact Unilock for information.

Internal Use Only. TRE NY



FOSSIL  
NEW



STEEL MOUNTAIN  
NEW

Bundle Type	RANDOM
Thickness (mm)	60MM
Dimension mm	
Dimension Imperial	

SQFT PER	Bundle	116.87
	Layer	11.69000
	Section	-
	Stone	0.56

PER BUNDLE	Layers	10.00
	Sections	-

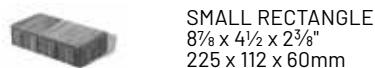
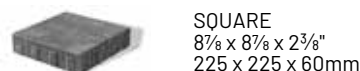
SOLDIER LNFT PER	SqFt	-
	Section	-
	Layer	-
	Bundle	-

SAILOR LNFT PER	SqFt	1.57
	Section	-
	Layer	18.35
	Bundle	183.46

UNITS PER	SqFt	1.80
	Section	-
	Bundle	210.00

LBS PER	Layer	321
	Section	-
	Bundle	3,208

## 3 UNIT RANDOM BUNDLE



## ADVANTAGES

### PERMEABLE

Can be installed to allow water to flow through

### DRIVE FRIENDLY

Can handle vehicular loads

Notes: **Sold in full bundles only** and is produced and sold on a required, refundable skid.

**Important:** A urethane rubber paver mat must be used to prevent scuffing when compacting. For permeable installations, Unilock recommends using granite chips for joint filler. For traditional applications, please refer to the Polymeric Sand Best Practices and Important Notice on page 83. All measurements are nominal. Contact Unilock for more information.

Internal Use Only. TRE UX





CRYSTALLINE BASALT

PEPPERED GRANITE

Bundle Type	3 UNIT RANDOM	CURB UNIT
Thickness (mm)	70MM	170MM
Dimension mm		230MM X 300MM X 170MM
Dimension Imperial		9" X 11 1/2" X 7"

SQFT PER	Bundle	97.53	-
	Layer	12.19000	-
	Section	-	-
	Stone	0.32	-

PER BUNDLE	Layers	8.00	3.00
	Sections	-	-

SOLDIER LNFT PER	SqFt	-	-
	Section	-	-
	Layer	-	11.81
	Bundle	-	35.43

SAILOR LNFT PER	SqFt	2.34	-
	Section	-	-
	Layer	28.49	-
	Bundle	227.95	-

UNITS PER	SqFt	3.12	-
	Section	-	-
	Bundle	304.00	36.00

LBS PER	Layer	398	555
	Section	-	-
	Bundle	3,186	1,664

## 3 UNIT RANDOM BUNDLE



LARGE RECTANGLE  
12 x 5 1/8 x 2 3/4"  
305 x 130 x 70mm



MEDIUM RECTANGLE  
9 x 5 1/8 x 2 3/4"  
230 x 130 x 70mm



SMALL RECTANGLE  
7 x 5 1/8 x 2 3/4"  
175 x 130 x 70mm



CURB UNIT  
7 x 9 x 11 1/2 x 4"  
180 x 230 x 290 x 100mm

## ADVANTAGES

Granite, Quartz and Marble surface materials

## PERMEABLE

Can be installed to allow water to flow through

## DRIVE FRIENDLY

Can handle vehicular loads

Notes: **Sold in full bundles only.** All measurements are nominal. Also available in permeable. Important: Textured surfaces require a buffer between the plate compactor and the paver surface to prevent scuffing. [Read the Polymeric Sand advisory on page 83.](#) Contact Unilock for information.

Internal Use Only. TBC NY



NATURAL

Bundle Type		SINGLE
Thickness (mm)		80MM
Dimension mm		400mm x 600mm x 80mm
Dimension Imperial		15 3/4" x 23 5/8" x 3 1/8"

SQFT PER	Bundle	72.00
	Layer	10.29000
	Section	-
	Stone	2.57

PER BUNDLE	Layers	7.00
	Sections	-

SOLDIER LNFT PER	SqFt	-
	Section	-
	Layer	-
	Bundle	-

SAILOR LNFT PER	SqFt	-
	Section	-
	Layer	-
	Bundle	-

UNITS PER	SqFt	0.39
	Section	-
	Bundle	28.00

LBS PER	Layer	250
	Section	-
	Bundle	1,748



STANDARD  
23 5/8" x 15 3/4" x 3 1/8"  
600 x 400 x 80mm

ADVANTAGES

PERMEABLE

Can be installed to allow water to flow through

DRIVE FRIENDLY

Can handle vehicular loads

Notes: Call for availability. Sold in full bundles only and shipped on a refundable skid. Void is 40% of the paver and is approximately 3" in diameter. All measurements are nominal.

Internal Use Only. TFS UX



FRENCH GREY



MIDNIGHT SKY  
SPECIAL ORDER



SUMMER WHEAT



WINTER MARVEL

	3 UNIT
Bundle Type	RANDOM
Thickness (mm)	60MM
Dimension mm	
Dimension Imperial	

SQFT PER	Bundle	104.60
	Layer	10.46000
	Section	-
	Stone	1.31

PER BUNDLE	Layers	10.00
	Sections	-

SOLDIER LNFT PER	SqFt	-
	Section	-
	Layer	-
	Bundle	-

SAILOR LNFT PER	SqFt	0.82
	Section	-
	Layer	8.61
	Bundle	86.12

UNITS PER	SqFt	0.76
	Section	-
	Bundle	80.00

LBS PER	Layer	305
	Section	-
	Bundle	3,050

## 3 UNIT RANDOM BUNDLE



LARGE RECTANGLE  
14 x 21 x 2 3/8"  
360 x 540 x 60mm



SQUARE  
14 x 14 x 2 3/8"  
360 x 360 x 60mm



SMALL RECTANGLE  
7 x 14 x 2 3/8"  
180 x 360 x 60mm

**NOTE - PRODUCT NOW HAS 10 LAYERS PER BUNDLE**

## ADVANTAGES EasyClean™

### EASYCLEAN™

Factory sealed to provide integral surface protection from stains

### COLORFUSION™

Subtly mottled color finish

### PEDESTRIAN FRIENDLY

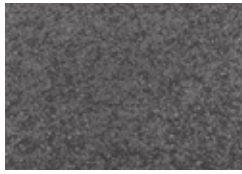
Not recommended for vehicular use

Notes: Umbriano Random Bundle pavers are not suitable for vehicular applications. All measurements are nominal. Product is not sectionable and is shipped on a refundable skid. **Available in full bundles only.** Product is not to be installed on stone dust. **Important:** Textured surfaces require a buffer between the plate compactor and the paver surface to prevent scuffing. **Read the Polymeric Sand advisory on page 83.** Contact your Unilock representative for additional information.

Internal Use Only. UMB NY



FRENCH GREY



MIDNIGHT SKY



SUMMER WHEAT



WINTER MARVEL

## ADVANTAGES

24" slabs not recommended for vehicular use. All other sizes can handle vehicular loads.

**EASYCLEAN™** EasyClean™  
Factory sealed to provide integral surface protection from stains

**COLORFUSION™**  
Subtly mottled color finish



24 x 24 x 2 3/4"  
600 x 600 x 70mm  
**SPECIAL ORDER**



24 x 12 x 2 3/4"  
600 x 300 x 70mm  
**SPECIAL ORDER**



16 x 16 x 2 3/4"  
400 x 400 x 70mm  
**SPECIAL ORDER**



16 x 8 x 2 3/4"  
400 x 200 x 70mm  
**SPECIAL ORDER**



8 x 8 x 2 3/4"  
200 x 200 x 70mm  
**SPECIAL ORDER**

## SPECIAL ORDER PRODUCT

Bundle Type	24 X 24	24 X 12	16 X 16	16 X 8	8 X 8
Thickness (mm)	70MM	70MM	70MM	70MM	70MM
Dimension mm	600mm x 600mm x 70mm	300mm x 600mm x 70mm	400mm x 400mm x 70mm	200mm x 400mm x 70mm	200mm x 200mm x 70mm
Dimension Imperial	23 5/8" x 23 5/8" x 2 3/4"	11 7/8" x 23 5/8" x 2 3/4"	15 3/4" x 15 3/4" x 2 3/4"	7 7/8" x 15 3/4" x 2 3/4"	7 7/8" x 7 7/8" x 2 3/4"

SQFT PER	Bundle	62.00	93.00	82.67	82.67	82.67
	Layer	7.75000	11.63000	10.33000	10.33000	10.33000
	Section	-	-	-	-	-
	Stone	3.88	1.94	1.72	0.86	0.43

PER BUNDLE	Layers	8.00	8.00	8.00	8.00	8.00
	Sections	-	-	-	-	-

SOLDIER LNFT PER	SqFt	0.51	0.51	0.76	0.76	1.52
	Section	-	-	-	-	-
	Layer	3.94	5.91	7.87	7.87	15.75
	Bundle	31.50	47.24	62.99	62.99	125.98

SAILOR LNFT PER	SqFt	0.51	1.02	0.76	1.52	1.52
	Section	-	-	-	-	-
	Layer	3.94	11.81	7.87	15.75	15.75
	Bundle	31.50	94.49	62.99	125.98	125.98

UNITS PER	SqFt	0.26	0.52	0.58	1.16	2.32
	Section	-	-	-	-	-
	Bundle	16.00	48.00	48.00	96.00	192.00

LBS PER	Layer	258	372	331	331	331
	Section	-	-	-	-	-
	Bundle	2,062	2,978	2,646	2,646	2,646

Internal Use Only. UMB NY

Notes: Umbriano 24" pavers are not suitable for vehicular applications. All measurements are nominal. Product is not sectionable and is shipped on a refundable skid. **Available in full bundles only / Half bundles are available with lead time.** There is a 48 hour lead time required on all half bundles; half bundles are also subject to a fee. Product is not to be installed on stone dust. \* 24" x 24" and 12" x 24" are available only by special order. Lead Time Required. Minimum quantities apply. Premium pricing applies. Important: Textured surfaces require a buffer between the plate compactor and the paver surface to prevent scuffing. [Read the Polymeric Sand advisory on page 83.](#) Contact your Unilock representative for additional information.





BAVARIAN BLEND



CHARCOAL  
5x10 only



FOSSIL **NEW**



NEW YORK BLEND



STEEL MOUNTAIN

Bundle Type	3 UNIT RANDOM	SMALL RECTANGLE
Thickness (mm)	70MM	70MM
Dimension mm		127MM X 254MM X 70MM
Dimension Imperial		5" X 10" X 2 3/4"

SQFT PER	Bundle	94.19	94.19
	Layer	11.77000	11.77000
	Section	-	-
	Stone	0.59	0.34

PER BUNDLE	Layers	8.00	8.00
	Sections	-	-

SOLDIER LNFT PER	SqFt	-	0.81
	Section	-	-
	Layer	-	14.58
	Bundle	-	116.67

SAILOR LNFT PER	SqFt	1.24	2.47
	Section	-	-
	Layer	14.57	29.16
	Bundle	116.56	233.33

UNITS PER	SqFt	1.70	2.97
	Section	-	-
	Bundle	160.00	280.00

LBS PER	Layer	373	373
	Section	-	-
	Bundle	2,985	2,985

## 3 UNIT RANDOM BUNDLE



LARGE RECTANGLE  
15 x 10 x 2 3/4"  
380 x 254 x 70mm



MEDIUM RECTANGLE  
10 x 10 x 2 3/4"  
254 x 254 x 70mm



SMALL RECTANGLE  
10 x 5 x 2 3/4"  
254 x 127 x 70mm



SMALL RECTANGLE  
10 x 5 x 2 3/4"  
254 x 127 x 70mm

## ADVANTAGES

### EASYCLEAN™ EasyClean

Factory sealed to provide integral surface protection from stains

### DRIVE FRIENDLY

Can handle vehicular loads

Notes: All measurements are nominal. **Random Bundle is sold in full bundles only.** Contact Unilock for information. Important: Textured surfaces require a buffer between the plate compactor and the paver surface to prevent scuffing.

Internal Use Only. WPT UX



ALMOND GROVE



LIMESTONE



SIERRA

		Standard
Bundle Type		SINGLE
Thickness (mm)		100MM
Dimension mm		300mm x 100mm x 200mm
Dimension Imperial		11 7/8" x 3 7/8" x 7 7/8"

FCFT PER	Bundle	36.00
	Layer	-
	Stone	0.33

PER BUNDLE	Layers	-
	Sections	6.00

LNFT PER	Bundle	108.00
	Unit	1.00

UNITS PER	SqFt	3.00
	Section	18.00
	Bundle	108.00

LBS PER	Layer	-
	Section	546
	Bundle	3,274



STANDARD  
12 x 8 x 4"  
300 x 200 x 100mm



UNIVERSAL BASE  
19 x 14 x 2 1/4"  
482 x 355 x 55mm  
NATURAL ONLY  
See page 68 for more information

ADVANTAGES

ANTIQUE FINISH  
Distressed, timeworn finish

COPING OPTIONS  
We recommend using Ledgestone, Natural Stone, Universal Coping or Brussels Fullnose.

Internal Use Only. BDS UX



ALMOND GROVE



GRANITE



SIERRA



**CORNER**  
8 x 12 x 6"  
200 x 300 x 150mm



**XL UNIT**  
16 x 6 x 12"  
400 x 150 x 300mm



**COPING**  
24 x 12 x 3"  
600 x 300 x 75mm



**WEDGE CAP**  
8½ (7¼) x 12¾ x 3"  
215 (187) x 323 x 75mm



**UNIVERSAL BASE**  
19 x 14 x 2¼"  
482 x 355 x 55mm  
NATURAL ONLY  
See page 68 for more  
information

	Corner Split	XL Wall Split	Coping 24"	Wedge Cap Split
Bundle Type	SINGLE	SINGLE	SINGLE	SINGLE
Thickness (mm)	150MM	150MM	75MM	86MM
Dimension mm	200mm x 150mm x 300mm	400mm x 150mm x 300mm	600mm x 75mm x 300mm	215MM X 75MM X 323MM
Dimension Imperial	7 7/8" x 5 7/8" x 11 7/8"	15 3/4" x 5 7/8" x 11 7/8"	23 5/8" X 3" X 11 7/8"	8 1/2" X 3" X 12 3/4"

FCFT PER	Bundle	15.00	21.33	16.00	64.00
	Layer	5.00000	5.33000	2.00000	8.00000
	Stone	0.83	0.67	1.00	0.67

PER BUNDLE	Layers	3.00	4.00	8.00	8.00
	Sections	-	-	2.00	-

LNFT PER	Bundle	-	-	64.00	-
	Unit	-	-	4.00	-

UNITS PER	SqFt	1.20	1.50	0.52	1.50
	Section	-	-	8.00	-
	Bundle	18.00	32.00	16.00	96.00

LBS PER	Layer	273	605	145	318
	Section	-	-	-	-
	Bundle	820	2,419	2,320	2,544

Internal Use Only. CON UX

Notes: Maximum height without setback 36" (under optimum conditions). Maximum height with setback is 42" (under optimum conditions). Higher walls can be achieved using geogrid reinforcement. . Wedge cap radius = 7", contains 8 Closed-end units per bundle. Closed-end not sold separately. XL Tapered units will allow for a minimum 8ft outside radius. All Concord Wall" is layered and shipped on refundable skid. Step Tread is sectioned. Closed-end step tread is available. Unilock, through Risi Stone® Systems International, can provide preliminary site engineering for most commercial projects. Soils information, site drawings, and loading requirements are some of the information details required in order to provide this preliminary site engineering. Contact your local Unilock Representative for details. Retaining wall engineering software is also available free of charge at [www.unilock.com](http://www.unilock.com).



NATURAL



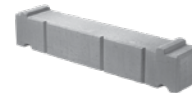
STANDARD  
72" x 14" x 12"  
1830 x 360 x 300mm  
**SPECIAL ORDER**



COPING  
72" x 14" x 12"  
1830 x 360 x 300mm  
**SPECIAL ORDER**



CLOSED END COPING  
72" x 14" x 12"  
1830 x 360 x 300mm  
**SPECIAL ORDER**



TIE-BACK  
72" x 14" x 12"  
1830 x 360 x 300mm  
**SPECIAL ORDER**



CORNER 90°  
36" x 14" x 12"  
900 x 360 x 300mm  
(Right Corner Shown)  
**SPECIAL ORDER**

	Standard	Coping	Closed-End Coping	Tie-Back	Corner 90°
Bundle Type	SINGLE	SINGLE	SINGLE	RANDOM	SINGLE
Thickness (mm)	300MM	300MM	300MM	300MM	300MM
Dimension mm	1,830mm x 300mm x 360mm	1,830mm x 300mm x 360mm	1,830mm x 300mm x 360mm	360mm x 300mm x 1,830mm	900mm x 300mm x 360mm
Dimension Imperial	72" x 11 7/8" x 14 1/4"	72" x 11 7/8" x 14 1/4"	72" x 11 7/8" x 14 1/4"	14 1/4" X 11 7/8" X 72"	35 1/2" x 11 7/8" x 14 1/4"

FCFT PER	Bundle	24.10	24.10	24.10	4.68	16.67
	Layer	12.04000	12.04000	12.04000	2.34000	8.34000
	Stone	6.02	6.02	6.02	1.17	4.17

PER BUNDLE	Layers	2.00	2.00	2.00	2.00	2.00-
	Sections	-	-	-	-	-

LNFT PER	Bundle	24.10	24.10	24.10	-	-
	Unit	6.02	6.02	6.02	-	-

UNITS PER	SqFt	0.17	0.17	0.17	0.85	0.24
	Section	-	-	-	-	-
	Bundle	4.00	4.00	4.00	4.00	4.00

LBS PER	Layer	938	884	884	940	460
	Section	-	-	-	-	-
	Bundle	3,752	3,536	3,536	3,752	1,840

Internal Use Only. DHL ON

Notes: **\*Special Order - Lead time is required, minimum quantities apply. Sold in full bundles only.** Closed-end coping units are closed on both ends so that they may be used as left or right units. Tie-back units are reinforced with steel. 1/2 Standard units are slightly tapered and can be used to create a 45 foot radius. Refer to terms and conditions for placement rates. Unilock, through Risi Stone® Systems International, can provide preliminary site engineering for most commercial projects. Soils information, site drawings, and loading requirements are some of the information details required in order to provide this preliminary site engineering. All measurements are nominal. Contact Unilock for more information.





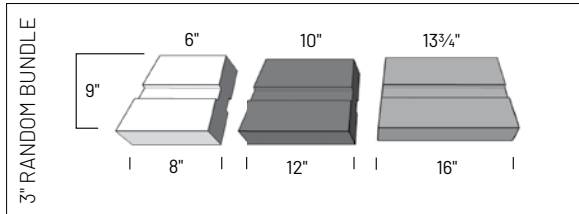
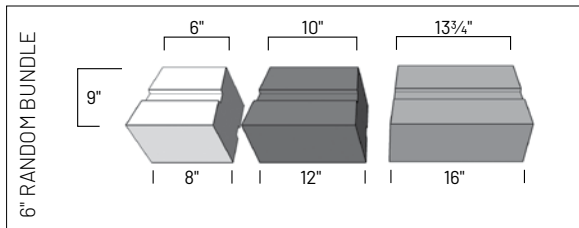
The enhanced Estate Wall System with 3" high and 6" high units, is ideal for all residential landscape walls and vertical element construction. The front and back of each unit is rock-faced making it perfect for seat walls and the unique tapered units can be used for both straight or curved applications.

## Estate Wall™ System

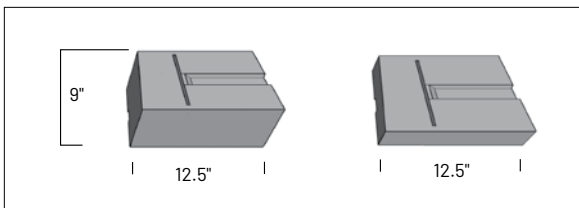
**UNILOCK**  
PAVERS & WALLS

# Units

## WALL UNITS

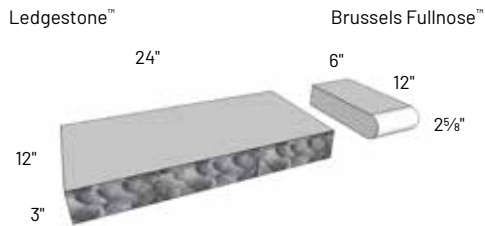
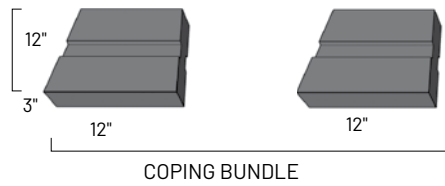


## CORNER UNITS

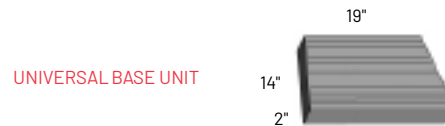


NOTE: See Product Data for packaging information.

## COPING

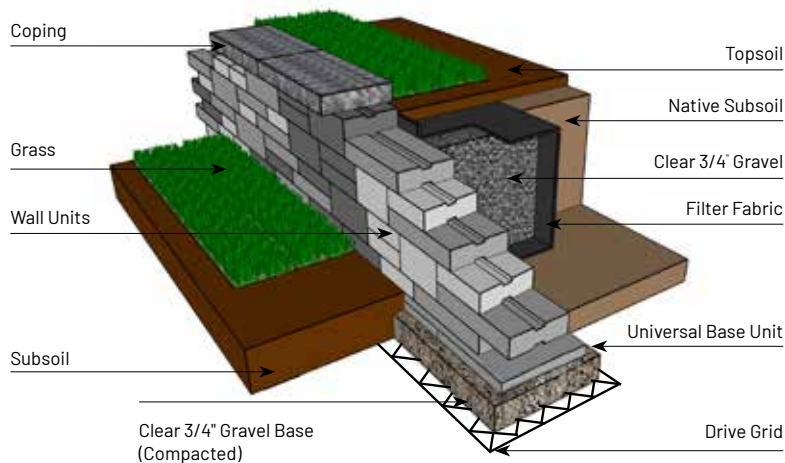


NOTE: Different products can be used for Estate Wall coping. LedgeStone and Brussels Fullnose are two of the most popular.

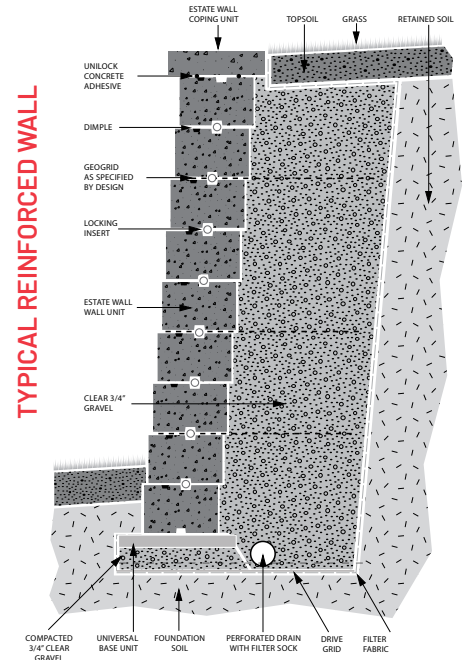


NOTE: Unilock Recommends using the Universal Base Units

# Cross Sections



MAXIMUM HEIGHT FOR VERTICAL APPLICATION - 21"  
MAXIMUM HEIGHT FOR SETBACK APPLICATION - 33"

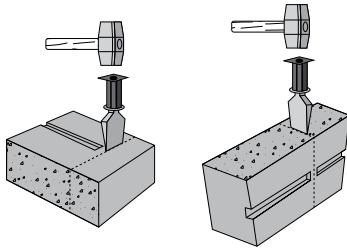


\*Higher wall up to 6' can be achieved using geogrid reinforcement. Contact your Unilock Territory Manager.



# Corners

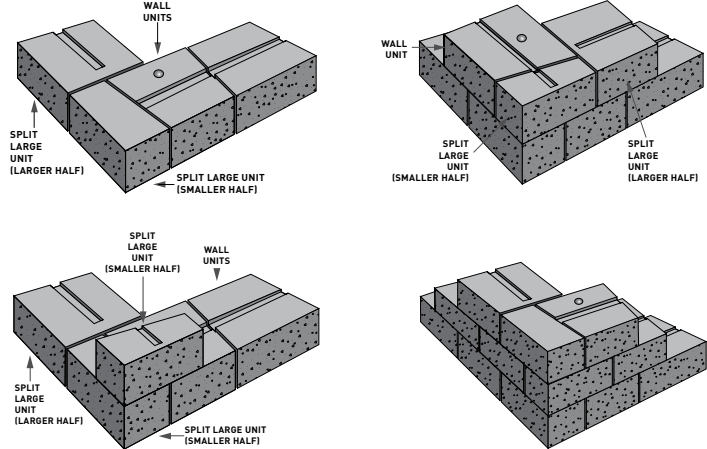
## CONVERTIBLE LARGE WEDGE UNITS



To split a large convertible unit, use a hammer and chisel to score the top and sides, then flip the unit upside down and use the chisel to break the unit. This may require a couple of hits along the groove to achieve a clean break.

Each bundle contains approximately 9 convertible units.

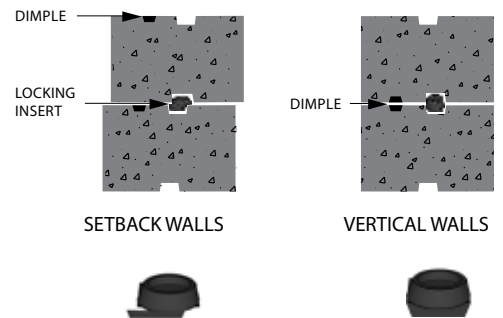
## 90° SEAT WALL CORNER



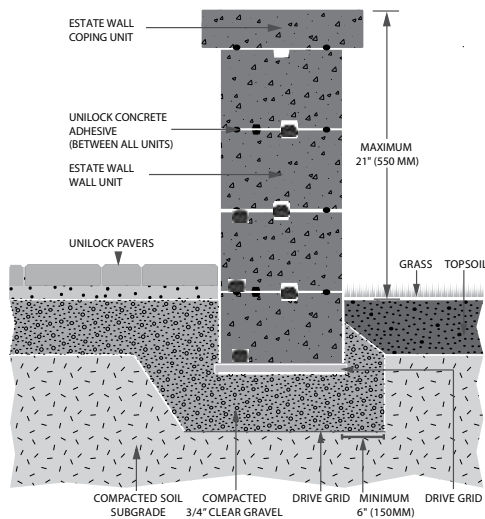
## LOCKING INSERTS

Depending on the application or the wall strength required, you can construct the Estate Wall System vertically or with a setback. To assist in alignment and locking, proprietary plastic inserts are provided with each bundle. Depending on the orientation of the insert will dictate whether it goes up vertical or with a setback.

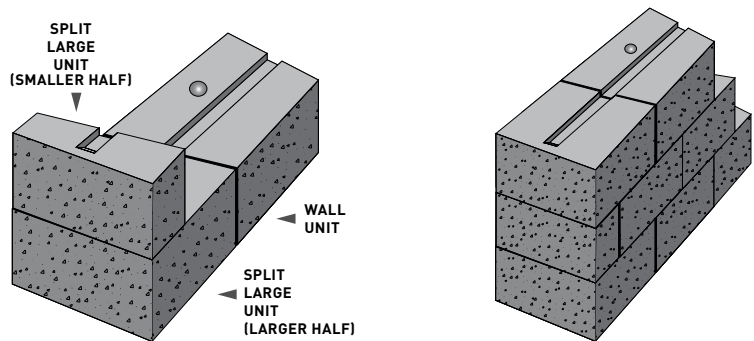
*Note: It is strongly recommended that you use adhesive on all rows and for all applications to achieve maximum stability and strength.*



# Seat Walls



## SEAT WALL TERMINATION

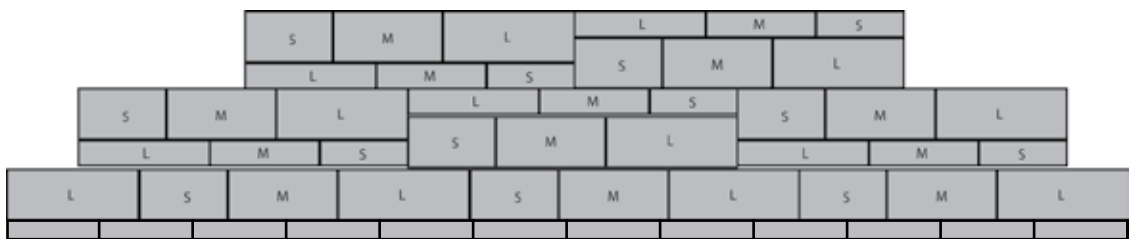
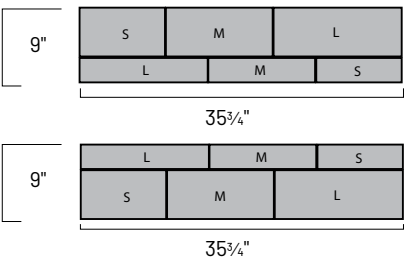
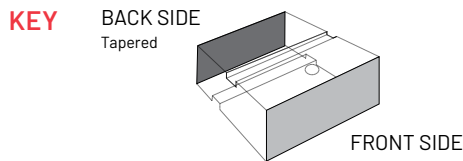


Alternate courses

**UNILOCK**  
PAVERS & WALLS

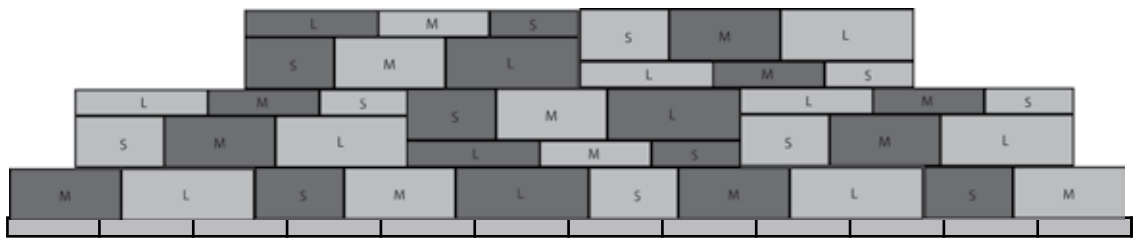
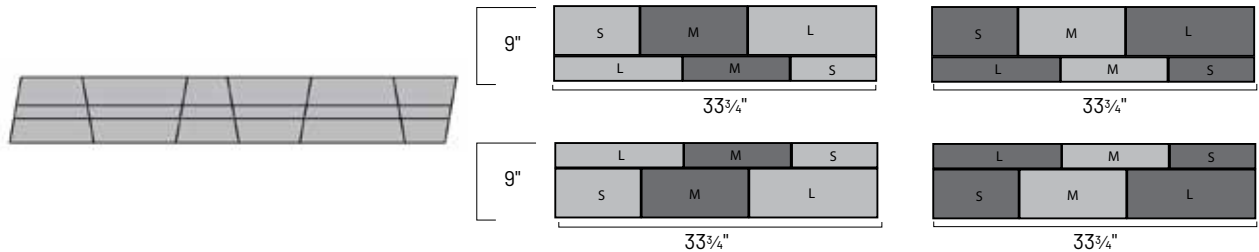
**UNILOCK**

## RANDOM PATTERNS OPEN BACK WALL



Use 6" units for first course    Use Universal Base Units for base

## RANDOM PATTERNS SOLID WALL

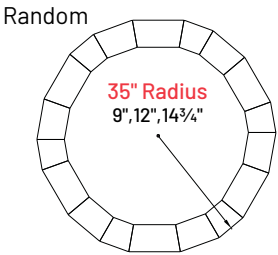


Use 6" units for first course    Use Universal Base Units for base

## CURVED RADIUS

Radius achieved using only the tapered (wedge) units.

Radius in inches	35"	27"	35"	44"	31"	35"	40"
Unit sequence	9", 12", 14 3/4"	Only 9" Units	Only 12" Units	Only 14 3/4" Units	9", 12", 9", 12"	9", 14 3/4", 9"	12", 14 3/4", 12", 14 3/4"
Note:	Uses all units in bundle	These sequences will have left over units. Plan to use left overs in other parts of the project.					



Although the three tapered unit sizes come packaged together, they can be separated to achieve various radius projects. If you construct a radius using only one size unit, the other units will be left over. Careful planning will allow you to use these units elsewhere.





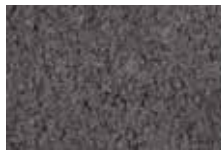
ALMOND GROVE



GRANITE



SIERRA



MIDNIGHT CHARCOAL  
NEW (COPING ONLY)



UNIVERSAL BASE  
19 x 14 x 2 1/4"  
482 x 355 x 55mm  
NATURAL ONLY  
See page 68 for more  
information

	3 Unit	Corner	2 Unit Coping
Bundle Type	RANDOM	SINGLE	RANDOM
Thickness (mm)	150MM	150MM	75MM
Dimension mm	320mm x 150mm x 230mm		
Dimension Imperial	12 5/8" x 5 7/8" x 9"		

FCFT PER	Bundle	24.00	16.38	14.70
	Layer	6.00000	4.10000	2.10000
	Stone	0.50	0.51	0.23

PER BUNDLE	Layers	4.00	4.00	7.00
	Sections	-	-	-

LNFT PER	Bundle	-	-	56.87
	Unit	-	-	0.90

UNITS PER	SqFt	2.00	1.95	4.29
	Section	-	-	-
	Bundle	48.00	32.00	63.00

LBS PER	Layer	585	444	294
	Section	-	-	-
	Bundle	2,340	1,776	2,060

Internal Use Only. EWL CH

Notes: 3" and 6" random wall bundles have convertible large units that can be used for corners or ending seat walls. End caps not sold separately. 24 sq.ft. per bundle based on single-sided layout; 18 sq.ft. per bundle based on double-sided layout. LedgeStone®, Brussels Block® XL, Brussels Fullnose® or 6" x 12" Fullnose complement as a possible coping. All measurements are nominal. Contact Unilock for more information.



LARGE  
9 x 16 x 6"  
230 x 380 x 150mm



MEDIUM  
9 x 12 x 6"  
230 x 320 x 150mm



SMALL  
8 x 9 x 6"  
200 x 230 x 150mm



CORNER  
9 x 12 1/2 x 6"  
230 x 320 x 150mm

### 2 UNIT COPING BUNDLE



COPING UNIT  
12 x 9 x 12 x 3"  
300 x 230 x 300 x 75mm



COPING UNIT  
11 x 9 x 12 x 3"  
280 x 230 x 300 x 75mm



ALMOND GROVE



GRANITE



SIERRA



MIDNIGHT CHARCOAL  
NEW (COPING ONLY)



UNIVERSAL BASE  
19 x 14 x 2 1/4"  
482 x 355 x 55mm  
NATURAL ONLY  
See page 68 for more  
information

	3 Unit	Corner	2 Unit Coping
Bundle Type	RANDOM	SINGLE	RANDOM
Thickness (mm)	75MM	75MM	75MM
Dimension mm	320mm x 75mm x 230mm		
Dimension Imperial	12 5/8" x 3" x 9"		

FCFT PER	Bundle	24.00	16.38	14.70
	Layer	3.00000	2.05000	2.10000
	Stone	0.25	0.26	0.23

PER BUNDLE	Layers	8.00	8.00	7.00
	Sections	-	-	-

LNFT PER	Bundle	-	-	56.87
	Unit	-	-	0.90

UNITS PER	SqFt	4.00	3.91	4.29
	Section	-	-	-
	Bundle	96.00	64.00	63.00

LBS PER	Layer	271	264	294
	Section	-	-	-
	Bundle	2,164	2,110	2,060

Internal Use Only. EWL CH

Notes: 3" and 6" random wall bundles have convertible large units that can be used for corners or ending seat walls. End caps not sold separately. 24 sq.ft. per bundle based on single-sided layout; 18 sq.ft. per bundle based on double-sided layout. Ledgerstone™, Brussels Block™ XL, Brussels Fullnose™ or 6" x 12" Fullnose complement as a possible coping. All measurements are nominal. Contact Unilock for more information.

### 3 UNIT RANDOM BUNDLE



LARGE  
9 x 16 x 3"  
230 x 380 x 75mm



MEDIUM  
9 x 12 x 3"  
230 x 320 x 75mm



SMALL  
8 x 9 x 3"  
200 x 230 x 75mm



CORNER  
9 x 12 1/2 x 3"  
230 x 320 x 75mm

### 2 UNIT COPING BUNDLE



COPING UNIT  
12 x 9 x 12 x 3"  
300 x 230 x 300 x 75mm



COPING UNIT  
11 x 9 x 12 x 3"  
280 x 230 x 300 x 75mm



ALMOND GROVE



LIMESTONE



MIDNIGHT CHARCOAL  
Pillar/Corner only



SIERRA



UNIVERSAL BASE  
19 x 14 x 2 1/4"  
482 x 355 x 55mm  
NATURAL ONLY  
See page 68 for more  
information

	4 Unit	Pillar / Corner
Bundle Type	RANDOM	SINGLE
Thickness (mm)	100MM	100MM
Dimension mm		400mm x 100mm x 190mm
Dimension Imperial		15 3/4" x 3 7/8" x 7 7/8"

FCFT PER	Bundle	29.92	48.24
	Layer	9.97000	16.08000
	Stone	0.50	0.67

PER BUNDLE	Layers	3.00	3.00
	Sections	-	-

LNFT PER	Bundle	89.06	96.00
	Unit	1.48	1.33

UNITS PER	SqFt	2.01	1.49
	Section	-	-
	Bundle	60.00	72.00

LBS PER	Layer	881	936
	Section	-	-
	Bundle	2,643	2,808

### 4 UNIT RANDOM BUNDLE



8 x 24 x 4"  
200 x 600 x 100mm



8 x 20 x 4"  
200 x 500 x 100mm



8 x 16 x 4"  
200 x 400 x 100mm



8 x 12 x 4"  
200 x 300 x 100mm



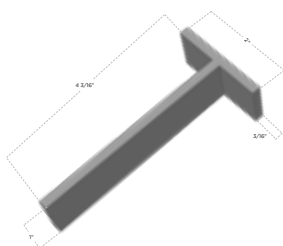
CORNER / PILLAR  
8 x 16 x 4"  
200 x 400 x 100mm

Internal Use Only. LDS UX

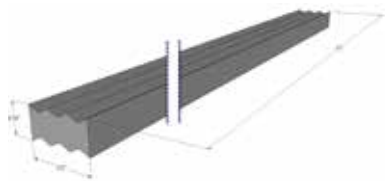
Notes: **Sold in full bundles only** and is produced and sold on a required, refundable skid. Spacing strips are shipped with random wall bundles to create even spacing between units. LedgeStone™, Unilock Natural Stone or 6"x12" Fullnose complement as possible coping options. All measurements are nominal. Contact Unilock for more information.

# Lineo™ Dimensional Stone

Shadow Box - Spacers (supplied with bundle of product)



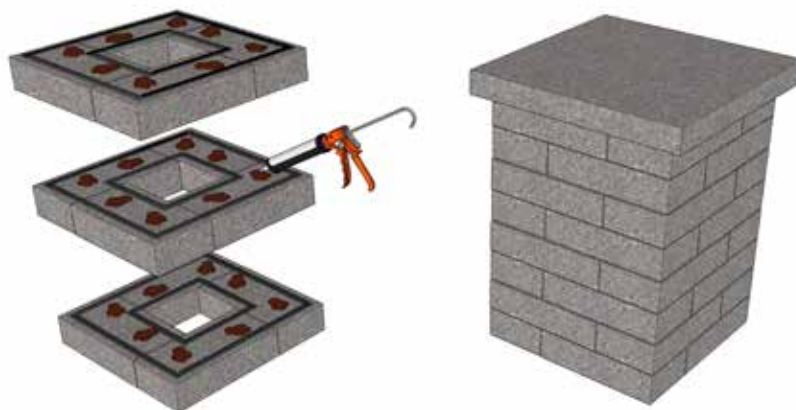
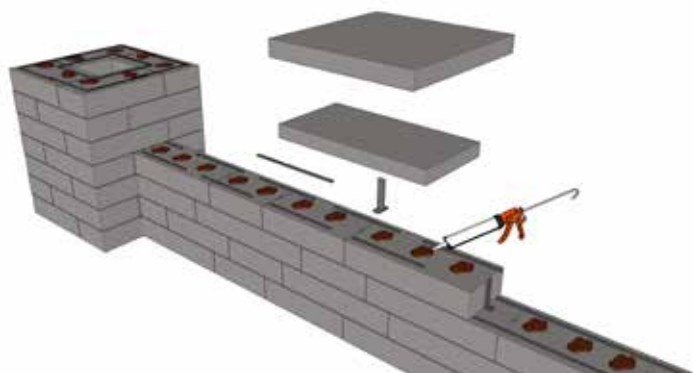
"T" Spacers  
1" x 4 3/16" x 2"



"Strip" Spacers  
3/16" x 3/8" x 22"

Adhesive "mound" is placed every 4 inches apart.

Mound must be minimum 3/8" high so that the top and bottom are securely adhered.



## Notes:

Lineo is not a retaining wall. Lineo is a decorative landscape wall, with a typical height of 12" - 16" above grade. (Higher walls are possible when engineered by a professional engineer.)

In many cases, experienced installers are able to construct higher walls based on the actual design of the project or landscape feature. For example, designs containing 90 degree corners, box-like planters, hollow pillars and landscape features such as grill islands, can be successfully constructed to higher heights.

Disclaimer: The strength and capacity of a Lineo installation is dependent on many factors such as base material, site conditions, drainage, surcharge, design, and the quality and quantity of concrete adhesive used. Unilock cannot be responsible for installation failures. The performance of a Lineo installation rests solely on the installer or project engineer.





COASTAL SLATE



BUFF



UNIVERSAL BASE  
19 x 14 x 2 1/4"  
482 x 355 x 55mm  
NATURAL ONLY

See page 68 for more information



JUMPER CORNER UNIT  
12 1/4 x 9 7/8 x 4 1/2"  
310 x 250 x 114mm

## ADVANTAGES

**REALA™**  
Cast from natural stone



**2013 WINNER**

### 4 UNIT RANDOM BUNDLE



STANDARD UNIT 1  
8 x 9-10 x 2 1/4"  
200 x 230-250 x 57mm



STANDARD UNIT 2  
12 x 9-10 x 2 1/4"  
300 x 230-250 x 57mm



STANDARD UNIT 3  
12 x 9-10 x 2 1/4"  
300 x 230-250 x 57mm



STANDARD UNIT 4  
17 x 9-10 x 2 1/4"  
425 x 230-250 x 57mm

### 2 UNIT CORNER BUNDLE



LONG CORNER UNIT  
17 1/2 x 9-10 x 2 1/4"  
450 x 230-250 x 57mm



SHORT CORNER UNIT  
14 1/2 x 9-10 x 2 1/4"  
375 x 230-250 x 57mm

### 4 UNIT JUMPER BUNDLE



JUMPER UNIT 1  
8 x 9-10 x 4 1/2"  
200 x 230-250 x 114mm



JUMPER UNIT 2  
12 x 9-10 x 4 1/2"  
300 x 230-250 x 114mm



JUMPER UNIT 3  
12 x 9-10 x 4 1/2"  
300 x 230-250 x 114mm



JUMPER UNIT 4  
17 x 9-10 x 4 1/2"  
425 x 230-250 x 114mm



PILLAR UNIT  
19 3/4 x 19 3/4 x 4 1/2"  
500 x 500 x 114mm



PILLAR UNIT  
Pillar cap sold separately

	Random Bundle	Jumper Bundle	Pillar Unit	Corner Jumper	Corner Bundle
Bundle Type	RANDOM	RANDOM	SINGLE	SINGLE	SINGLE
Thickness (mm)	57MM	114MM	114MM	114MM	57MM
Dimension mm			500mm x 114mm x 500mm	310mm x 114mm x 250mm	
Dimension Imperial			19 3/4" x 4 1/2" x 19 3/4"	12 1/4" X 4 1/2" X 9 7/8"	

FCFT PER	Bundle	24.30	24.30	-	21.60	16.21
	Layer	3.04000	6.08000	-	5.40000	4.05000
	Stone	0.19	0.38	-	0.68	0.41

PER BUNDLE	Layers	8.00	4.00	4.00	4.00	4.00
	Sections	-	-	-	-	-

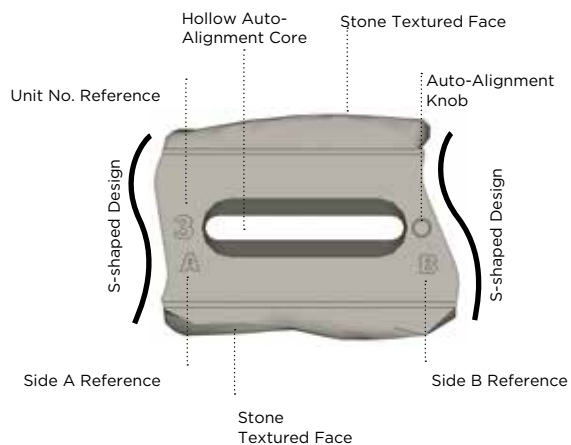
LNFT PER	Bundle	130.69	65.34	-	-	-
	Unit	1.02	1.02	-	-	-

UNITS PER	SqFt	5.27	2.63	-	1.48	2.47
	Section	-	-	-	-	-
	Bundle	128.00	64.00	8.00	32.00	40.00

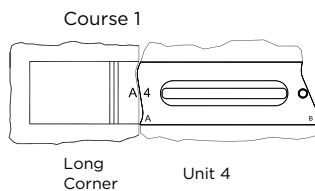
LBS PER	Layer	252	624	234	320	293
	Section	-	-	-	-	-
	Bundle	2,015	2,495	934	1,280	1,173

Notes: **Sold in full bundles only and is produced and sold on a required, refundable skid.** Rivercrest is recommended for walls under 2ft. Ideal for straight or curved walls, seat walls, pillars, tree rings, planters, firepits and grill islands. Integrated connectors require no pins or clips. Minimum radius using equal amounts of each unit is 1.25m / 4.1ft. Using only unit 1 & 3 a 1.055m / 3.5ft radius can be achieved. For more information, please consult the Rivercrest installation booklet. Retaining wall engineering software is also available free of charge at [www.unilock.com](http://www.unilock.com). All measurements are nominal. Contact Unilock for more information. Unilock recommends using Ledgestone™ or Natural Stone coping for a complete and refined look.

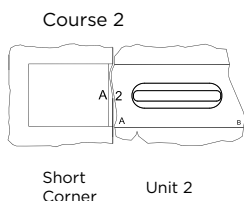
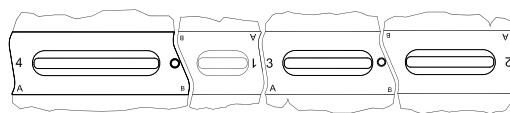
Internal Use Only. RVC ON



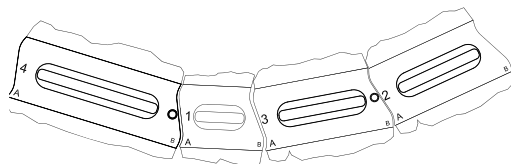
## Starting a Wall



## Straight Wall - Align A-A / B-B

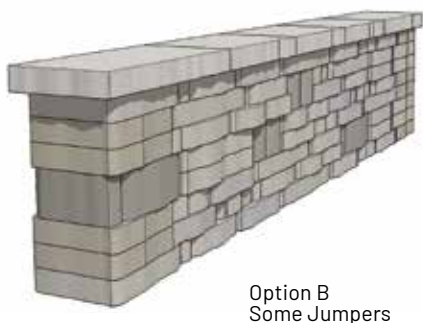


## Curved Wall - Align A-B / B-A



## DESIGN STYLE

To accurately determine the number of standard and jumper units you will require, start by selecting an aesthetic option.



## JUMPER UNITS

In addition to being used to enhance sections of wall, jumper units can also be used in a variety of different ways within the Rivercrest Wall system. The Jumper Unit #2 has faces on three sides making it perfect for incorporating into pillars and corners. The unit can also be used when starting and ending seat walls.



For more information please consult the Rivercrest installation booklet.



SPECIAL ORDER PRODUCT

GRANITE BLEND NEW

		STANDARD / CORNER	Coping Split
Bundle Type		SINGLE	SINGLE
		--	--
Thickness (mm)		180MM	180MM
Dimension mm		1,000mm x 180mm x 290mm	1,000mm x 180mm x 290mm
Dimension Imperial		39 3/8" x 7" x 11 1/2"	39 3/8" x 7" x 11 1/2"

FCFT PER	Bundle	23.25	23.25
	Layer	7.75000	7.75000
	Stone	1.94	1.94

PER BUNDLE	Layers	3.00	3.00
	Sections	-	-

LNFT PER	Bundle	39.37	39.37
	Unit	3.28	3.28

UNITS PER	SqFt	0.52	0.52
	Section	-	-
	Bundle	12.00	12.00

LBS PER	Layer	1,029	1,029
	Section	-	-
	Bundle	3,086	3,086



STANDARD / CORNER  
11½ X 39 X 7"  
290 X 1000 X 180MM



COPING  
11½ X 39 X 7"  
290 X 1000 X 180MM

NOTE: Coping Unit can also act as a closed end unit with the unique patented locking mechanism.

Notes: Coping Unit can also act as a closed end unit with the unique patented locking mechanism.  
Internal Use Only. SSE/ON



GRANITE



NATURAL  
SPECIAL ORDER



SIERRA



**STANDARD 925**  
20 x 36½ x 7⅝"  
925 x 1000 x 185mm



**STANDARD 333**  
13 x 39 x 7⅝"  
333 x 1000 x 185 mm



**STANDARD 500**  
20 x 39 x 7⅝"  
500 x 1000 x 185mm



**CORNER SPLIT**  
36½ x 20 x 7⅝"  
925 x 500 x 185mm



**COPING**  
20 x 39 x 7⅝"  
500 x 1200 x 185mm



**CLOSED-END COPING**  
20 x 48 x 7⅝"  
500 x 1200 x 185mm  
GRANITE ONLY

	Standard 925 Split	Standard 333 Split	Standard 500	Corner Split	Coping Split	Closed-End Coping
Bundle Type	SINGLE	SINGLE	SINGLE	SINGLE	SINGLE	SINGLE
Thickness (mm)	185MM	185MM	185MM	185MM	185MM	185MM
Dimension mm	1,000mm x 185mm x 925mm	1,000mm x 185mm x 333mm	1,000mm x 185mm x 500mm	925mm x 185mm x 500mm	1,000mm x 185mm x 500mm	1,200mm x 185mm x 500mm
Dimension Imperial	39 3/8" x 7 3/8" x 36 1/2"	39 3/8" x 7 3/8" x 13"	39 3/8" x 7 3/8" x 19 3/4"	36 1/2" x 7 3/8" x 19 3/4"	39 3/8" x 7 3/8" x 19 3/4"	47 1/4" x 7 3/8" x 19 3/4"

FCFT PER	Bundle	6.00	18.00	12.00	17.19	12.00	14.43
	Layer	2.00000	6.00000	4.00000	5.73000	4.00000	4.81000
	Stone	2.00	2.00	2.00	2.87	2.00	2.41

PER BUNDLE	Layers	3.00	3.00	3.00	3.00	3.00	3.00
	Sections	-	-	-	-	-	-

LNFT PER	Bundle	9.75	-	19.50	-	19.50	23.70
	Unit	3.25	-	3.25	-	3.25	3.95

UNITS PER	SqFt	0.50	0.50	0.50	0.35	0.50	0.42
	Section	-	-	-	-	-	-
	Bundle	3.00	9.00	6.00	6.00	6.00	6.00

LBS PER	Layer	954	954	954	954	927	1,140
	Section	-	-	-	-	-	-
	Bundle	2,862	2,862	2,862	2,862	2,780	3,420

Internal Use Only. SST UX/ON

Notes: \* Special Order - Lead time is required, minimum quantities apply. All Special Order items are sold in full bundles only. Coping units can be used to construct steps. Retaining wall engineering software is also available free of charge at [www.unilock.com](http://www.unilock.com). All measurements are nominal. Contact Unilock for more information.





PITCHED FINISH



BAVARIAN



FOSSIL **NEW**



STEEL MOUNTAIN

SMOOTH FINISH



OPAL



STEEL MOUNTAIN

UMBRIANO® FINISH



FRENCH GREY  
**SPECIAL ORDER**



SUMMER WHEAT  
**SPECIAL ORDER**



WINTER MARVEL  
**SPECIAL ORDER**

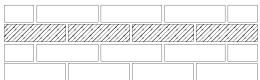
SERIES™ FINISH



ONYX BLACK  
3" FASCIA PANEL  
AVAILABLE ONLY IN  
SERIES FINISH



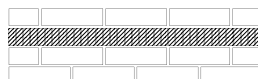
1/2 Running Bond



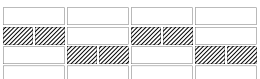
1/2 Running Bond with Linear Accents



1/2 Running Bond with Random Accents



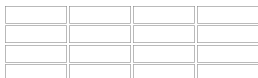
1/2 Running Bond with Paver Accents



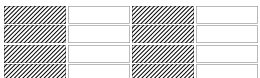
Mixed Bond



1/3 Running Bond



Stacked Bond



Stacked Bond with Accents



U-Cara Fascia Panels can be placed anywhere along the patented SureTrack™ Backer Block, allowing for pattern, color and texture combinations that are impossible to achieve with other systems. The design possibilities are endless for single or double sided vertical landscape features and retaining walls.



2019  
red dot WINNER



SURE TRACK  
STANDARD BACKER  
7<sup>7</sup>/<sub>8</sub> x 5<sup>5</sup>/<sub>8</sub> x 5<sup>5</sup>/<sub>8</sub>"  
200 x 150 x 150mm



**NEW**  
SURE TRACK  
LARGE BACKER  
7<sup>7</sup>/<sub>8</sub> x 5<sup>5</sup>/<sub>8</sub> x 11<sup>5</sup>/<sub>8</sub>"  
175 x 150 x 300mm



SURE TRACK  
CORNER/PILLAR BACKER  
7<sup>7</sup>/<sub>8</sub> x 5<sup>5</sup>/<sub>8</sub> x 11<sup>5</sup>/<sub>8</sub>"  
175 x 150 x 300mm



SURE TRACK  
CORNER INSERT  
L = 2"  
50mm

## RECOMMENDED BASE UNIT



UNIVERSAL BASE  
19 x 14 x 2<sup>1</sup>/<sub>4</sub>"  
482 x 355 x 55mm

	Standard Backer	Large Backer	Corner/Pillar Backer	Universal Base Pad
Bundle Type	SINGLE	SINGLE	SINGLE	SINGLE
Thickness (mm)	150MM	150MM	150MM	55MM
Dimension mm	200mm x 150mm x 150mm	190mm x 150mm x 294mm	175mm x 150mm x 300mm	482mm x 55mm x 355mm
Dimension Imperial	7 7/8" x 5 7/8" x 5 7/8"	7 1/2" x 5 7/8" x 11 5/8"	6 7/8" X 5 7/8" X 11 7/8"	19" x 2 1/4" x 14"

FCFT PER	Bundle	33.91	20.35	15.82	-
	Layer	11.30000	6.78000	3.96000	-
	Stone	0.32	0.32	0.28	-

PER BUNDLE	Layers	3.00	3.00	4.00	9.00
	Sections	-	-	-	-

LNFT PER	Bundle	69.99	41.34	-	85.50
	Unit	0.67	0.66	-	1.58

UNITS PER	SqFt	3.10	3.10	3.54	-
	Section	-	-	-	-
	Bundle	105.00	63.00	56.00	54.00

LBS PER	Layer	758	925	498	278
	Section	-	-	-	-
	Bundle	2,275	2,774	1,992	2,502

Internal Use Only. UCA UX/NY+

Notes: Sure Track Corner Backer Units when used in a pillar application, can achieve 42 FFT/bundle or .757 FFT/unit.



**3" FASCIA PANEL**  
3 x 9¼ x 2⅜"  
75 x 233 x 60mm  
Series™ Onxy Black only



**STANDARD FASCIA PANEL**  
6 x 18½ x 2⅜"  
150 x 466 x 60mm

## CLOSED-END CORNER BUNDLE



**STANDARD FASCIA HALF PANEL**  
6 x 9¼ x 2⅜"  
150 x 233 x 60mm



**CLOSED-END FASCIA PANEL**  
6 x 21 x 2⅜"  
150 x 540 x 60mm

	3" Fascia Panel Series
<b>Bundle Type</b>	SINGLE
<b>Thickness (mm)</b>	75MM
<b>Dimension mm</b>	233mm x 75mm x 60mm
<b>Dimension Imperial</b>	9 1/4" x 3" x 2 3/8"

<b>FCFT PER</b>	Bundle	63.20
	Layer	10.53000
	Stone	0.19

<b>PER BUNDLE</b>	Layers	6.00
	Sections	-

<b>LNFT PER</b>	Bundle	-
	Unit	-

<b>UNITS PER</b>	SqFt	5.32
	Section	-
	Bundle	336.00

<b>LBS PER</b>	Layer	250
	Section	-
	Bundle	1,501

	Standard Fascia Smooth	Standard Fascia Pitched	Standard Fascia Umbriano	Closed-End Corner Smooth	Closed-End Corner Pitched	Closed-End Corner Umbriano
<b>Bundle Type</b>	SINGLE	SINGLE	SINGLE	SINGLE	SINGLE	SINGLE
<b>Thickness (mm)</b>	150MM	150MM	150MM	150MM	150MM	150MM
<b>Dimension mm</b>	466mm x 150mm x 60mm	466mm x 150mm x 60mm	466mm x 150mm x 60mm			
<b>Dimension Imperial</b>	18 3/8" x 5 7/8" x 2 3/8"	18 3/8" x 5 7/8" x 2 3/8"	18 3/8" x 5 7/8" x 2 3/8"			

<b>FCFT PER</b>	Bundle	61.52	61.52	61.49	45.15	45.15	45.15
	Layer	10.25000	10.25000	10.25000	9.03000	9.03000	9.03000
	Stone	0.73	0.73	0.73	1.29	1.29	1.29

<b>PER BUNDLE</b>	Layers	6.00	6.00	6.00	5.00	5.00	5.00
	Sections	-	-	-	-	-	-

<b>LNFT PER</b>	Bundle	129.50	129.50	-	74.95	89.95	89.95
	Unit	1.54	1.54	-	2.14	2.57	2.57

<b>UNITS PER</b>	SqFt	1.37	1.37	1.37	0.78	0.78	0.78
	Section	-	-	-	-	-	-
	Bundle	84.00	84.00	84.00	35.00	35.00	35.00

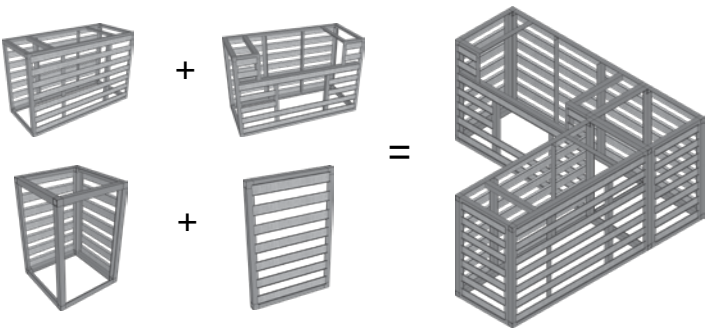
<b>LBS PER</b>	Layer	274	291	274	207	236	207
	Section	-	-	-	-	-	-
	Bundle	1,647	1,745	1,647	1,033	1,179	1,033

Internal Use Only. UCA UX/NY+

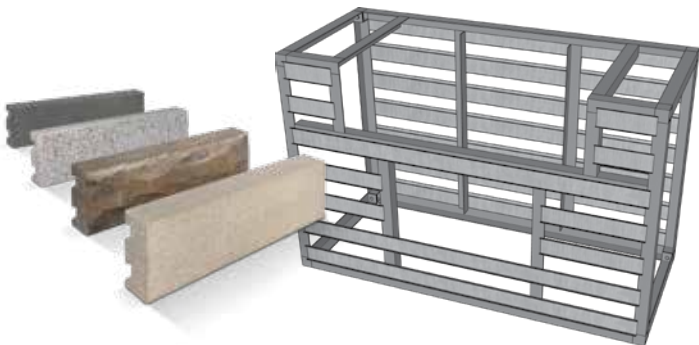
Notes: Produced and sold on a required refundable skids. Sure Track Large Backer Units when used as corners in a pillar application, can achieve 42 FFt/bundle or .757 FFt/unit.

# U-Cara® Modular System New

The U-Cara Modular System offers a variety of aluminum frames that can be mixed and matched to construct vertical features like grill islands. Speak to your contractor to select a design and a U-Cara fascia panel finish to suit your project.



**With the U-Cara Modular System you can build Grill Islands, Bars, Back splashes, Fire Tables and Pillars.**



NO.	MODEL	DESCRIPTION
RS-UCARA000001	URS	UCARA 8" RAIL 10/PACK
RS-UCARA000002	URS	ALIGNMENT BARS 39" (10/PACK)
RS-UCARA001000	UL-GC	UNIVERSAL GRILL CABINET
RS-UCARA002000	UL-BC	BASE CABINET
RS-UCARA003000	UL-CC	CORNER CABINET 27.5" x 27.5"
RS-UCARA003001	UL-CCOS	CORNER CABINET 27.5" x 36.5" OS
RS-UCARA003002	UL-CCBP	CORNER CABINET PANEL
RS-UCARA004000	UL-ECK	END CLAD KIT 27.5"
RS-UCARA004001	UL-ECKOS	END CLAD KIT 36.5" OS
RS-UCARA005000	UL-BS	BACKSPLASH-GRILL/BASE UNIT
RS-UCARA005001	UL-BSCC	BACKSPLASH CORNER CABINET
RS-UCARA005002	UL-BSCCOS	BACKSPLASH CORNER CABINET OS
RS-UCARA006000	UL-DD	STAINLESS DOUBLE ACCESS DOORS 27"
RL-UCARA007000	UL-PU	PILLAR UNIT

**LOOKING FOR MORE INFORMATION?**  
Visit [Unilock.com](http://Unilock.com) to download the U-Cara Modular System Brochure.





# U-Cara® Rail System **New**

---



The U-Cara Wall Mount System allows you to put the finishing touches on your project by cladding existing structures like unsightly exposed foundation areas or concrete steps with U-Cara fascia panels.



U-CARA ALIGNMENT BAR:  
39" LENGTH - SOLD IN PACKS OF 10 PIECES

U-CARA ALIGNMENT RAILS:  
8' LENGTH - SOLD IN PACKS OF 10 PIECES

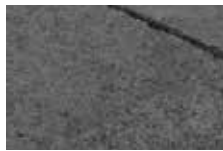


# Brussels Fullnose™ & Fullnose Edger

CLASSIC



ALMOND GROVE



CHARCOAL



LIMESTONE



SIERRA

Bundle Type	BRUSSELS FULLNOSE	FULLNOSE EDGER
Thickness (mm)	70MM	70MM
Dimension mm	150mm x 300mm x 70mm	150mm x 300mm x 70mm
Dimension Imperial	5 7/8" x 11 7/8" x 2 3/4"	5 7/8" x 11 7/8" x 2 3/4"

FCFT PER	Bundle	-	-
	Layer	-	-
	Stone	-	-

PER BUNDLE	Layers	-	-
	Sections	4.00	4.00

LNFT PER	Bundle	96.00	96.00
	Unit	0.50	0.50

UNITS PER	SqFt	-	-
	Section	48.00	48.00
	Bundle	192.00	192.00

LBS PER	Layer	-	-
	Section	728	704
	Bundle	2,913	2,815



BRUSSELS FULLNOSE  
6 x 12 x 2<sup>3</sup>/<sub>4</sub>"  
150 x 300 x 70mm



FULLNOSE EDGER  
6 x 12 x 2<sup>3</sup>/<sub>4</sub>"  
150 x 300 x 70mm

Internal Use Only. BFN/FNE UX

Notes: Units can be adhered to pool edge using Unilock Concrete Adhesive, or with mortar. Always observe proper construction techniques when adhering pavers to a surface. Consult your local pool contractors for installation specifics.

# Ledgestone™ Fullnose, Coping & Closed-End Coping

STONEMARK™



## STANDARD COPING



**COPING UNIT**  
24 x 12 x 2 3/8"  
610 x 305 x 70mm



**CLOSED-END COPING**  
24 x 12 x 2 3/8"  
610 x 305 x 70mm

## FULLNOSE COPING



**FULLNOSE COPING**  
24 x 12 x 2 3/8"  
610 x 305 x 60mm

## LARGE COPING



**30" LARGE COPING UNIT**  
30 x 13 1/2 x 2 3/4"  
762 x 343 x 70mm



**30" LARGE CLOSED-END COPING**  
30 x 13 1/2 x 2 3/4"  
343 x 762 x 70mm



BUFF



GREY

## ADVANTAGES

### REALA™

Cast from natural stone

	Fullnose	Coping	Closed-end	30" Large Coping	30" Large Closed-end
Bundle Type	SINGLE	SINGLE	SINGLE	SINGLE	SINGLE
Thickness (mm)	60MM	70MM	70MM	70MM	70MM
Dimension mm	610mm x 60mm x 305mm	610mm x 70mm x 305mm	610mm x 70mm x 305mm	762mm x 70mm x 343mm	762mm x 70mm x 343mm
Dimension Imperial	24" x 2 3/8" x 12"	24" x 2 3/4" x 12"	24" x 2 3/4" x 12"	30" X 2 3/4" X 13 1/2"	30" X 2 3/4" X 13 1/2"

FCFT PER	Bundle	5.12	5.52	5.52	6.87	6.87
	Layer	0.39000	1.38000	1.38000	1.72000	1.72000
	Stone	0.39	0.46	0.46	0.57	0.57

PER BUNDLE	Layers	-	-	-	-	-
	Sections	13.00	12.00	12.00	12.00	12.00

LNFT PER	Bundle	26.00	24.00	24.00	30.00	30.00
	Unit	2.00	2.00	2.00	2.50	2.50

UNITS PER	SqFt	2.54	2.18	2.18	1.75	1.75
	Section	1.00	1.00	1.00	1.00	1.00
	Bundle	13.00	12.00	12.00	12.00	12.00

LBS PER	Layer	-	-	-	-	-
	Section	167	64	66	94	93
	Bundle	2,169	772	796	1,128	1,116

Notes: Product is produced and sold on a required, refundable skid. Coping is rock faced on the front and the back; Closed-end coping and steps are rock faced on three sides. See page 86 for caulk information. All measurements are nominal. Contact Unilock for more information.

## PILLAR CAPS



**24" PILLAR CAP**  
24 x 24 x 4"  
610 x 610 x 100mm

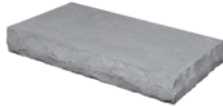


**28" PILLAR CAP**  
29 x 29 x 4"  
740 x 740 x 100mm

## STEPS



**72" STEP**  
24 x 72 x 6"  
610 x 1830 x 150mm



**48" STEP**  
24 x 48 x 5 7/8"  
610 x 1220 x 150mm

	24" Pillar Cap	28" Pillar Cap	72" Step	48" Step
Bundle Type	SINGLE	SINGLE	SINGLE	SINGLE
Manufacturing Location				
Thickness (mm)	100MM	100MM	150MM	150MM
Dimension mm	610mm x 90mm x 610mm	720mm x 90mm x 720mm	1,830mm x 150mm x 610mm	1,220mm x 150mm x 610mm
Dimension Imperial	24" x 3 1/2" x 24"	28 1/2" x 3 1/2" x 28 1/2"	72" x 5 7/8" x 24"	48" x 5 7/8" x 24"

FCFT PER	Bundle	3.28	-	8.86	5.91
	Layer	0.66000	-	2.95000	1.97000
	Stone	0.66	-	2.95	1.97

PER BUNDLE	Layers	5.00	5.00	3.00	3.00
	Sections	-	-	-	-

LNFT PER	Bundle	10.04	-	18.00	12.00
	Unit	2.01	-	6.00	4.00

UNITS PER	SqFt	1.52	-	0.34	0.51
	Section	1.00	1.00	1.00	1.00
	Bundle	5.00	5.00	3.00	3.00

LBS PER	Layer	159	302	860	574
	Section	-	-	-	-
	Bundle	795	1,510	2,581	1,721

Notes: Product is produced and sold on a required, refundable skid. Coping is rock faced on the front and the back; Closed-end coping and steps are rock faced on three sides. See page 86 for caulk information.  
All measurements are nominal. Contact Unilock for more information.



# Architectural Pillar Cap, Universal Base & Coping

ENDURACOLOR™

## ARCHITECTURAL PILLAR CAP



LIGHT GREY      MIDNIGHT CHARCOAL      TAN

## UNIVERSAL BASE



NATURAL

## UNIVERSAL COPING



LIGHT GREY      MIDNIGHT CHARCOAL      TAN

	Architectural Pillar Cap	Universal Base	Universal Coping
Bundle Type	SINGLE	SINGLE	SINGLE
Thickness (mm)	100MM	55MM	70MM
Dimension mm	711mm x 100mm x 711mm	482mm x 55mm x 355mm	482mm x 70mm x 355mm
Dimension Imperial	28" x 3 7/8" x 28"	19" x 2 1/4" x 14"	19" x 2 3/4" x 14"



ARCHITECTURAL PILLAR CAP  
28 x 28 x 3 7/8"  
711 x 711 x 100mm

FCFT PER	Bundle	3.06	-	17.44
	Layer	0.77000	-	2.18000
	Stone	0.77	-	0.36



UNIVERSAL BASE  
19 x 14 x 2 1/4"  
482 x 355 x 55mm  
NATURAL ONLY

PER BUNDLE	Layers	4.00	9.00	8.00
	Sections	-	-	-

LNFT PER	Bundle	9.36	85.50	75.90
	Unit	2.34	1.58	1.58

UNITS PER	SqFt	1.31	-	2.75
	Layer	1.00	6.00	6.00
	Bundle	4.00	54.00	48.00



UNIVERSAL COPING  
19 x 14 x 2 3/4"  
482 x 355 x 70mm

LBS PER	Layer	234	278	358
	Section	-	-	-
	Bundle	935	2,502	2,864

Notes: Product is produced and shipped on a required, refundable skid. 2 End Coping units per Layer (1 Left & 1 Right). All measurements are nominal. Contact Unilock for more information.

Sunset Fire Pit Kit

CLASSIC



Sunset Fire Pit shown above with Kettle Hook & Swing Away Grill.



ALMOND GROVE



LIMESTONE



SIERRA

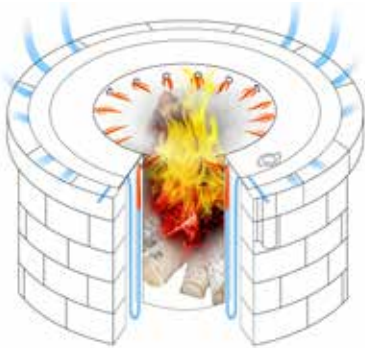
Bundle Type		SQUARE W/INSERT CLASSIC	ROUND W/INSERT CLASSIC
Thickness (mm)		400MM	400MM
Dimension mm		1,100MM X 1,100MM X 400MM	1,300MM X 1,300MM X 400MM
Dimension Imperial		43 3/8" X 43 3/8" X 15 3/4"	51 1/4" X 51 1/4" X 15 3/4"
DIAMETER (INCH)	Outside	43	52
	Inside	29	36
	Insert	27	35
	Layer per Unit	4	4
	Unit per Layer	12	18
	Unit Per Pallet	48	72
Lbs per Pallet		1357	1499

Notes: All measurements are nominal. Add 20 lbs. to weight when ordering grill unit for Sunset Fire Pits. Contact Unilock for more information.

UNILOCK REDUCED SMOKE INSERT

UTILIZING ZENTRO TECHNOLOGY

There's nothing like relaxing around a firepit to bring family and friends closer together. But with ordinary firepits, smoke always blows in someone's face - usually yours. With Unilock Reduced Smoke Inserts, stinging eyes are a thing of the past. Zentro's patent-pending technology reburns smoke before it gets anywhere near your eyes. Say hello to good times and good-bye to smoke.



The following accessories are sold separately for the Sunset Round Fire Pit. Contact your local Territory Manager for details.



ROUND FIRE SCREEN



SQUARE FIRESCREEN  
SPECIAL ORDER



24" SWING AWAY GRILL



KETTLE HOOK



ACCESSORY POST WITH COLLAR

# Rivercrest® Fire Pit Kit

STONEMARK™



COASTAL SLATE



BUFF



FIRE PIT GRILL

Fire pit grill is included and fits securely into the firepit.

Shown with round fire screen.  
Sold separately.  
Fire Pit diameter 54" / 1371.6mm

Bundle Type	ROUND W/ GRILL & INSERT
Thickness (mm)	405MM
Dimension mm	0MM X 1,370MM X 405MM
Dimension Imperial	0" X 53 7/8" X 15 7/8"

DIAMETER (INCH)	Outside	54
	Inside	36
	Insert	-

	Layer per Unit	3
	Unit per Layer	4
	Unit Per Pallet	12

	Lbs per Pallet	1512
--	----------------	------

Notes: All measurements are nominal.

# RomanStack Fire Pit Kit

CLASSIC



RomanStack Fire Pit shown above with cover.  
(Cover sold separately.)



ALMOND GROVE



GRANITE



SIERRA

Bundle Type	ROUND W /INSERT CLASSIC
Thickness (mm)	400MM
Dimension mm	1,525MM X 1,525MM X 400MM
Dimension Imperial	60" X 60" X 15 3/4"

DIAMETER (INCH)	Outside	60
	Inside	44
	Insert	43

	Layer per Unit	4
	Unit per Layer	24
	Unit Per Pallet	96

	Lbs per Pallet	1725
--	----------------	------

Notes: All measurements are nominal. Contact Unilock for more information.



# Unlock Elements

---



## TUSCANY

### SPECIAL ORDER

The Tuscany pre-built fireplace is constructed from Brussels Dimensional System™ and Copthorne® accents.

#### Weights:

Tuscany Collection

Fireplace Top – 2925 lbs

Fireplace Bottom – 4225 lbs

Wood Boxes – 4005 lbs

Arched Hearth – 1170 lbs



## BARCELONA

### SPECIAL ORDER

The Barcelona pre-built fireplace is constructed from Brussels Dimensional System with Umbriano® accent.

#### Weights:

Barcelona Collection

Fireplace Top – 2725 lbs

Fireplace Bottom – 4170 lbs

Wood Boxes – 4200 lbs

Arched Hearth – 1200 lbs



## BELLA

### SPECIAL ORDER

The Bella pre-built fireplace is constructed from Rivercrest® Wall.

#### Weights:

Bella

Fireplace Top – 1685 lbs

Fireplace Bottom – 3155 lbs



## FIREPLACE

Two piece set (base and chimney), comes with stainless fire box, pipe, and metal termination cap. (Upgraded termination cap available.)



## WOOD BOXES

Sold as a set of two and flank either side of the gas or standard fireplace.

Weight - 4200 lbs / set



## HEARTH

Hearth with gentle curved front.

Weight - 1200 lbs / unit

Please note that all Elements products are Special Order and require lead time.

# UniCare Natural Stone Cleaners & Sealers

For more information, visit  
[www.unicare-products.com](http://www.unicare-products.com)



## NEW UNICARE NATURAL STONE ACID CLEAN

1L and 5L

Removal of:

- Cement Staining
- Efflorescence
- Iron Oxide (Rust)
- Cement mortar
- Grout

Note: Never use hydrochloric or sulphuric acid based products. **ONLY FOR ACID RESISTANT STONE.**

Carefully read all instructions and safety information on product label prior to application. For additional safety information, see MSDS.



## NEW UNICARE NATURAL POWER CLEAN

1L and 5L

Removal of:

- Oil & Grease
- Food Stains
- General Dirt & Mud
- Light cement contamination (on acid sensitive surfaces)
- Sap & certain plant stains

Note: Carefully read all instructions and safety information on product label prior to application. For additional safety information, see MSDS.



## NEW UNICARE BIOCLEAN

1L and 5L

Removal of:

- Black spot algae
- Green algae
- Plant stains from leaves, wood, trees, berries & flowers
- Organic staining from bark & compost
- Colored stains from food spillages, tea, coffee and wine

Note: Carefully read all instructions and safety information on product label prior to application. For additional safety information, see MSDS.



## NEW UNICARE NATURAL STONE NATCOLORENHANCE SEALER

1L and 5L

Color Enhancement For Porous Stones

- No surface coating, sheen or shine
- Breathable
- Lasts several years
- Easy to apply

Note: Carefully read all instructions and safety information on product label prior to application. For additional safety information, see MSDS.



## NEW UNICARE NATURAL STONE NATMATTE SEALER

1L and 5L

For Porous Stones

- No change of color
- No surface coating, sheen or shine at all
- Riven Sandstone & Smooth Sandstone

Note: Carefully read all instructions and safety information on product label prior to application. For additional safety information, see MSDS.

## Cleaners



### TECHNISEAL® PROFESSIONAL GRADE OIL/GREASE REMOVER

**Description:** Professional Grade Oil & Grease Remover is an industrial strength petroleum-based product remover. It lifts and absorbs embedded oil and grease stains as it dries from a liquid to a powder. Specially formulated for concrete pavers, slabs and walls, natural stone, poured or stamped concrete, etc., Professional Grade Oil & Grease Remover works without damaging or discoloring the material and is easy to use. Packaging 1 quart container Note: Carefully read all instructions and safety information on product label prior to application. For additional safety information, see MSDS.



### TECHNISEAL® EFFLORESCENCE REMOVER

**Description:** Unicare Paver Cleaner is specially formulated to dissolve efflorescence (whitish salt deposit) and remove ground-in dirt on paving stones and concrete, without discoloring or damaging surfaces. It cleans evenly, and enables the sealant to better penetrate the material to be treated.

Packaging 1 gallon • Box of 4 x 1 US gallon

Note: Carefully read all instructions and safety information on product label prior to application. For additional safety information, see MSDS.

# Cleaners (continued)



## TECHNISEAL ORGANIC STAIN REMOVER

**Description:** Formulated to remove moss and mildew as well as tough organic stains such as dead leaves, blood, wine and non-greasy food stains on concrete pavers, slabs and walls, natural stone, etc; requires minimum scrubbing

Packaging 700g • Box of 6 x 700 g • 500 units per skid

Note: Carefully read all instructions and safety information on product label prior to application. For additional safety information, see MSDS.



## TECHNISEAL SR SLURRY REMOVER FOR PAVERS AND SLABS

**Description:** This is the most effective product available for removing cement slurry and polymeric sand haze on concrete or clay pavers and slabs. 1 gallon of concentrated product cleans up to 600 sq.ft. Coverage will depend on surface condition and product dilution.

Packaging 1 gallon • Box of 4 x 1 US gallon

Note: Carefully read all instructions and safety information on product label prior to application. For additional safety information, see MSDS.

# Sealers



## SUREBOND 1300 JOINT SAND STABILIZING SEALER - MATTE FINISH

Surebond Joint Stabilizing Sealer is an epoxy modified, single component VOC, EPA and OSHA compliant, solvent-free penetrating sealer that provides protection to interlocking paving stone installations against salt spray, acid rain, food and beverage stains, and other oxidizers. It binds joint sand together and ensures the integrity of the pavements by forming a homogeneous, flexible surface that stops erosion and joint sand failure in large paver installations. The sealer is also used to seal retaining walls and for concrete and aggregate and split-face stone to protect against staining salt spray and acid rain damage and discoloration for architectural, industrial, and residential installations.

**Packaging:** • 1 and 5 gallon containers available • 55 gallon drum available on special order.

Note: Carefully read all instructions and safety information on product label prior to application. For additional safety information, see MSDS.



## SUREBOND 7700 JOINT STABILIZING SEALER - GLOSS FINISH WITH ANTIFUNGAL PROTECTION

Seals the surface and bonds joint sand between interlocking concrete pavers. Protects colored, stained and exposed aggregate concrete from staining. Resists acid, salt, other corrosives and weathering. Stabilizing Sealer is water based, single component and epoxy-modified. It exceeds all VOC and EPA standards. The product is non-hazardous and has the consistency of water. It is milky white in appearance when applied, and dries crystal clear creating a semi-gloss finish.

**Packaging:** • 1 and 5 gallon available • 55 gallon drum available on special order

Note: Carefully read all instructions and safety information on product label prior to application. For additional safety information, see MSDS.



## SUREBOND 8700 WET LOOK JOINT SAND STABILIZER WITH FUNGICIDE

SB-8700 is an advanced premium acrylic sealer that will not yellow under exposure to sunlight. It's a 2 in 1 product; it protects the substrate surface and stabilizes jointing sand at the same time. Specially formulated with antifungal agents designed to help inhibit the growth of mold, fungi and moss on horizontal pavement surfaces, it forms a tenacious bond to the concrete or masonry surface. Wet look, Rain safe within 90 minutes, water repellent, breathable, solvent based.

**Packaging:**

• 1 gallon container	• 36 cases per skid (of 1 gal)
• 5 gallon pail (36 per skid)	• 80-120 sq.ft. coverage per gallon for pavers (approx.)*
• 55 gallon container (4 per skid)	• 100-300 sq.ft. coverage per gallon for natural stone (approx.)*
• Box of 4 x 1 gallon containers (4 x 1 US gal)	

# Adhesives



## UNILOCK CONCRETE ADHESIVE

10 oz. Caulk Tube: 20' at 1/4" Bead (Case of 12)      28 oz. Caulk Tube: 50' at 1/4" Bead (Case of 12)

Ideal for step veneering and retaining wall cap securement.

SPECIFICATIONS – (Conforms to UN-STD. 1804, ASTM 2339-70 & FHA UM-60)

Color: Natural Sand Color      Viscosity: Smooth Easy Gun Grade Mastic

CLEANUP: Use mineral spirits or chlorinated solvents – read solvent supplier's caution notes for use of this product.

STORAGE: Store in cool place, rotate stock. Keep at 70°F for 24 hours before use in cold weather. Store cartridges upright. Product does not have a flash point after it dries.



## TECHNISEAL STRUCTURE BOND (& GUN)

24 oz. Container: (Case of 12 / 84 boxes per pallet)

Super-strength hardscape foam adhesive, specifically for the construction industry. Quick & easy precise application with the special "Gun II" dispenser; adjustable bead size. 3/8" bead size will yield up to 600ft.

CLEANUP: Cured foam can only be removed mechanically. Use Structure Bond Gun Cleaner to clean gun upright. Product does not have a flash point after it dries.

# Sands



## TECHNISEAL® HP NEXTGEL POLYMERIC SAND

Designed for paver joints up to a maximum of 1 inch.

This paver sand is a high-performance polymer sand - it is the ideal product for heavy traffic and wet areas. Weeds and insects in paver joints is part of the past with this high-end product. This polymer sand is a mixture of graded sand (ASTM C144) and binder. It penetrates easily into joints, ensuring a fast and efficient jointing solution. This easy to use jointing sand will start to harden in minutes after water activation, and it quickly becomes resistant to erosion caused by water (rain, sprinklers and spray).

Colors: Urban Grey, Granite Grey and Tan

Packaging: 50 lb bag / 56 bags per skid • 65-85 sq.ft. coverage per bag for narrow joints, larger joints will require more sand



## TECHNISEAL PRO SERIES SMARTSAND POLYMERIC SAND

A special mix of graded sand and binder, designed for standard paver joints less than 1", specifically formulated for achieving optimum lock-up of pavers or slabs by filling the joints between them. Unlike regular sweeping jointing sand, Polymeric Sand resists insect penetration, weed growth, and erosion. New formulation with half hour setting time. Coverage: Approx. 75 sq. ft./ bag Coverage will vary depending on the type/size of stone used. Note: This product is recommended with extra care for use with Copthorne®, Courtstone®, Richcliff®, Town Hall® and Umbriano® products. Umbriano must have the surface cleaned with a foam squeegee post installation. This product is not suitable for use with Il Campo®, Series™ and Unigranite®.

Packaging: • 50 lb/bag / 56 bags/skid (2860 lbs/skid)



## POLYBIND G2 COMPLETE SAND

NO DUST • HAZE FREE • NO BLOWER • ONE WATERING

Designed for paver joints up to 2".

PolyBind Complete G2 is made with calibrated sand that is mixed with sophisticated intelligent polymers, which neutralizes haze and dust. The polymeric sand application is now dust-free and haze-free. No blower is needed and the intelligent polymeric sand requires only one watering. It is recommended for a variety of uses including pool decks, patios, footpaths, driveways, parking spaces, pavements, etc. It sets above the freezing temperature 32°F and can be used for joints up to a maximum of 2 in.

Colors: Nevada Tan & Oxford Grey

Packaging: 50 lb/bag      Coverage: 65-85 sq.ft./bag for narrow joints / larger joints will require more sand



## POLYBIND G2 SAND

Designed for paver joints up to a maximum of 1 inch.

Polybind G2 Sand is a unique mixture of polymer binders and calibrated sand available in Nevada Tan & Oxford Grey. The installation of Polybind Sand is almost identical to using regular paver joint sand, except for the application of water. Once it sets, it becomes very firm and locks between the paver joints. This firm bond maintains pavers securely in place, being equally effective on both horizontal and sloped surfaces.

Colors: Oxford Grey and Nevada Tan

Packaging: 50 lb bag / 56 bags per skid • 65-85 sq.ft. coverage per bag for narrow joints, larger joints will require more sand



# Sands (continued)



## GATOR AQUA ROCK

Manufactured to meet ASTM No.9 requirements for permeable paver joint units. The calibrated gradation obtained from the fractured high-strength granite makes it the ideal product for the bedding course & jointing material to collect surface water run-off and help stabilize interlocking paver surfaces.

Color: Granite Grey

Packaging: 50 lb bag / 56 bags per skid • 20-25 sq.ft. coverage per bag for a 60mm paver



## PERMA PAVER EDGING **NEW**

5 Gallon, 75 lb container

Designed to be mixed with water to use - 1 gallon water to 1 container product and is ideal for patios, pool decks and walkways. Better suited to open-graded aggregates, Perma Edge will outlast and out-perform traditional paver edging. It is quicker and easier to use, cutting installation time by 75%. Projects can be compacted and fine-graded immediately after installation.

- Coverage per container: yields approximately 25-30 lineal feet of edging per bucket

**\*\* All Polybind Sand products are available by Special Order \*\***

Sands	SAND RECOMMENDATIONS BY PRODUCT		
	Unicare® Plus Polymeric Sand	PolyBind HP	NEXTGEL / G2
PAVER TYPE	For joints up to 1". May be sealed. Available in Tan or Grey Binding sand.	For joints greater than 1". Available in Nevada Tan and Oxford Grey.	For joints greater than 1". Available in Urban Grey, Granite Grey and Tan.
Copthorne®	✓+	✓	✓
Courtstone®	✓+	✓	✓
Il Campo®	N/R	✓	✓
Richcliff®	✓+	N/R	N/R
Series®	N/R	✓	✓
Town Hall®	✓+	N/R	N/R
Treo® / Treo Classic	✓+		
Umbriano®	✓+	✓	✓
Westport™ EZ Clean	✓+		
Tumbled Pavers	✓	✓	✓
Standard Pavers	✓	✓	✓

N/R - Not Recommended      ✓ - Recommended      ✓+ - Recommended with Extra Care

(Contact your Territory Manager for more information.)

## IMPORTANT NOTICE

**1. DO NOT USE** Polymeric Jointing Sand on the following products: Series™ Il Campo®

If joint stabilization is required, use ordinary jointing sand and apply a stabilizing sealer. **Contact your local Unilock office for recommended sealants and application specifics.**

**2. EXTRA CARE** must be exercised when using Polymeric Sand on the following products:

Courtstone® Copthorne® Richcliff® Senzo™ Town Hall® Tribeca Cobble™ Umbriano™

Unilock's Polymeric Jointing Sand can be used on these products but the fine polymers and binders in Unilock Polymeric Jointing Sand have a natural tendency to adhere to the surface and therefore extra diligence must be taken to pre-clean the surface prior to "wetting the sand in" and squeegee off the surface post application. Failure to do so will result in a "whitish haze" on the surface that is difficult to remove.

**3. IMPORTANT COMPACTION NOTICE:** Always pre-compact the pavers WITHOUT SAND IN THE JOINTS. This will facilitate proper leveling. Polymeric sand can then be swept into the joints. Always use a compactor with a protective membrane attached to the bottom of the plate.

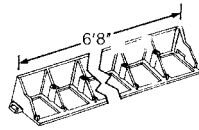
Unilock Polymeric Jointing Sand, cleaners and sealers, must always be applied by a trained and experienced professional. Contact your local Unilock office for training and the most up-to-date best practices.

NOTICE: Unilock does not accept any responsibility for damage to the surface caused by the improper application and use of Unilock polymeric sand, sealers or cleaners.

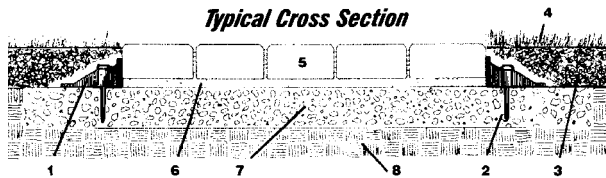
# Edge Restraints

## SnapEdge – One-Piece Edging That Does It All!

- Only one part required for straight runs or curved installations
- Built-in connector fastens one piece to the next – convenient 96" size, makes them easy to transport
- Unique 'Snip and Flex' feature speeds installations of curves and corners without pre-planning
- The open design allows a root system to grow through SnapEdge, further reinforcing the installation
- Engineered to provide a strong, easy-to-install edge restraint for concrete/clay pavers
- Nail hole bosses are full-length cylinders. Hammer blows will not fracture or force nail heads through edging



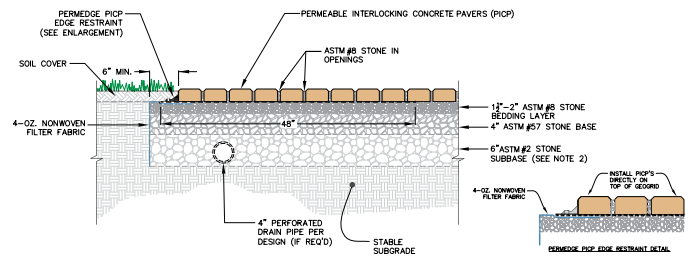
**Typical Cross Section**



- |                   |                       |                        |
|-------------------|-----------------------|------------------------|
| 1. SnapEdge       | 2. 10" Spiral Spike   | 3. Soil                |
| 4. Turf           | 5. Sand Jointed Paver | 6. Sand Jetting Course |
| 7. Aggregate Base | 8. Compacted Subgrade |                        |

## PermEdge – Permeable Paver Edge Restraint

- Comes fully assembled – no field assembly required
- Installs on top of the stone chip setting bed
- One-piece design for straight and curved applications
- Integral section-to-section connector
- 100% recycled material



## GATOR EDGE RIGID

Gator Edge Rigid is made with 100% Polypropylene Co-Polymer. This will give it great strength as well as providing greater flexibility. Rigid can be locked together with the "Twist & Lock" connection system.

### Strong Lateral Support

A triangular angle at all key points has been engineered to provide a strong lateral support, essential for the load transfer on the paving units. The Rigid model can be modified into a Flex by simply cutting the connector between each triangular angle.



- 1 piece = 8 linear feet
- 1 mini-pack = 6 pieces = 48 linear feet

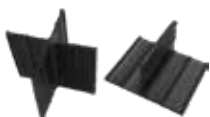
- 1 master-pack = 4 mini-packs = 192 linear feet
- 1 pallet = 28 master packs = 5,376 linear feet



- 1 piece = 8 linear feet
- 1 bundle = 24 pieces

- 1 bundle = 24 pieces = 192 linear feet
- 1 pallet = 16 bundles = 3,072 linear feet

# X & T Slab Spacers



Unilock recommends using slab spacers when installing Arcana on an open grade surface. "T" spacers are needed for running bond patterns, "X" spacers are needed for stack bond patterns. Please contact your sales manager for more information.

## X & T SLAB SPACERS

- 250 per bag
- X & T bagged separately
- X spacers 2" x 2" (RS-ACC237)
- T spacers 2" x 1" (RS-ACC236)

# PaverSaver Uni Mat



## PAVERSAVER UNI MAT

Universal Design - for use on most compactors

The PaverSaver Uni Mat is made out of a specially formulated urethane rubber. This material is soft enough to protect the paver surface and hard enough to minimally affect travel speed. The universal sizing fits most compactor plates and easily attaches and detaches from the compactor.

# UniLyft™



- Install up to 700 sq. ft. per hour!
- Access tight or narrow areas
- Eliminate the need for a forklift on site
- Reduce labor costs
- Reduce shoulder, hand and knee pain and injury
- Improve your bottom line
- Financing available

Contact your local rep for details



# Silcasystem



16" x 18-1/8" x 1-1/2"

## SILCASYSTEM

This system is ideal for applications where decking materials like wood lumber or composite lumber would have otherwise been the only choice. When connected to wood floor joists, Silca Grate™ grids provide a substructure (sub-floor) for a wide variety of decking materials: stone, brick pavers, slate, travertine pavers, marble or granite. Because it is engineered for strength and easy installation, this durable outdoor flooring makes it possible for residential do it yourself, as well as commercial architects, designers and builders, to create a new, exciting outdoor living space!

# Landscape Fabric and Grid System



## GEOGRID AND FABRICS

Strata 150 - 22.22 sq. yds/roll

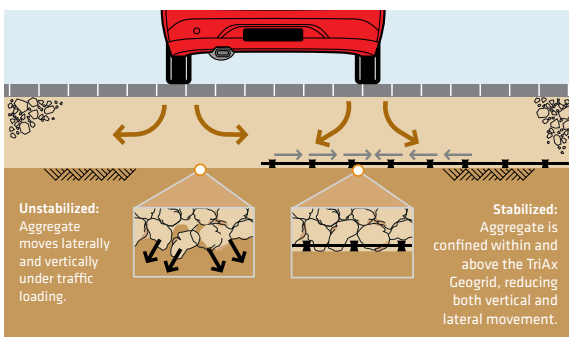
Strata 200 - 200 sq. yds/roll

Filter Fabric - 6.25' x 360'; 250 sq yds/roll



## LANDSCAPE SPIKES

50lb case



## WHY DRIVEGRID SYSTEM™?

- ✓ Easy to install
- ✓ Inexpensive
- ✓ Reduces overall project cost
- ✓ Proven Tensar® TriAx® Technology



## UNILOCK DRIVEGRID™ SYSTEM

- 120' x 13' Roll, 1,572 Square Feet/Roll, 56 lb/Roll

# Special Order Tools and Accessories

- Paver Extractor
- Paver Adjuster
- Paver Cart
- Paver Persuader
- Sand Pull
- Sand Pull Pro
- Screed Board
- EDCO Masonry Saw
- Diamond Blades
- Paver Guillotine
- Wall Guillotine
- Paver Scribe
- Quick Draw
- Paver Square
- Mammoth Mite 110V
- Bison Pedestal Systems
- AWS Pedestal Systems
- Elmich Pedestal Systems
- Strata Sleeve-It
- Geo Block 2
- Rompox Flexible Jointing Mortars
- Permeable Paver Spacers
- Foam Slotted Roller

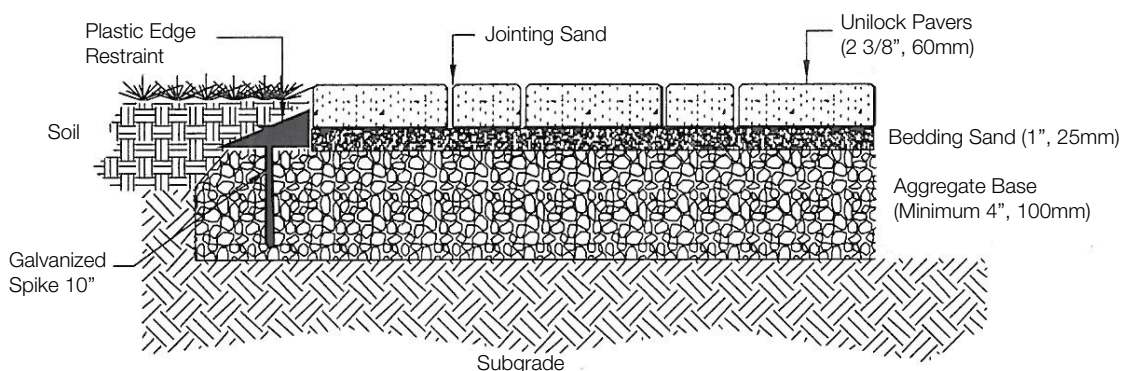
## Base Thickness Chart (General)

APPLICATION	GRAVEL BASE	BEDDING COURSE	BACKFILL WIDTH (WALLS ONLY)
PATIOS, WALKWAYS, POOL DECKS	4" - 6" (10cm-15cm)	1" (2.5cm)	
DRIVEWAYS	8" - 12" (20cm - 30cm)	1" (2.5cm)	
STEPS, PLANTERS, RAISED PATIO	6" (15cm)	0 - 1/8" (0cm - 0.3cm)	8" - 12" (20cm - 30cm)
RETAINING WALLS UNDER 18" (45cm)	6" (15cm)	0 - 1/8" (0cm - 0.3cm)	12" (30cm)
RETAINING WALLS OVER 18" (45cm)	6" (15cm)	0 - 1/8" (0cm - 0.3cm)	16" (50cm)

Soil condition - In areas with poor soil conditions, (eg., heavy clay, disturbed soils) increase the depth of the base to provide more stability. Where poor soil conditions exist it may be advisable to contact an engineer when constructing a retaining wall in excess of 24" in height.

Area = (Length) x (Width)	Metric Equivalents
Area of a Circle = $3.14 \times (\text{Radius}) \times (\text{Radius})$	1 inch = 2.5400 centimeters 1 centimeter = 0.3937 inch
Area of a Half Circle = $1.57 \times (\text{Radius}) \times (\text{Radius})$	1 foot = 0.3048 meter 1 meter = 39.3701 inches
Area of a Quarter Circle = $.78 \times (\text{Radius}) \times (\text{Radius})$	1 yard = 0.9144 meter
Area of a Triangle = $(1/2 \text{ Base}) \times (\text{Height})$	1 sq. foot = 929.030 sq. centimeters
Perimeter of a Circle = $6.28 \times (\text{Radius})$	1 sq. meter = 1.196 sq. yards
Perimeter of a Half Circle = $3.14 \times (\text{Radius})$	27 cu feet = 1 cu. yard
Perimeter of a Quarter Circle = $1.57 \times (\text{Radius})$	

## Typical Paver Cross Section



### Aspect Ratio

Simply defined, the aspect ratio is the overall length of a paver divided by its height.

LENGTH/HEIGHT = ASPECT RATIO

If an insufficient aspect ratio is used, any flexing or rocking caused by movement on the surface such as pedestrian or vehicular traffic, could result in breakage of the paver units. Not only is this breakage unsightly, but it can also compromise the integrity of the segmental system.

3 : 1 or less  
Heavy-Duty Vehicular

4 : 1  
Light-Duty Vehicular

Over 5 : 1  
Pedestrian



# Important Notes

---

## UNILOCK PAVER PATTERNS

This Product Data Guide contains an extensive reference to patterns and designs. The purpose of these pattern swatches is to help the designer plan unique and exceptional designs. The percentages of products shown are based on the pattern and not on bundle configurations. In fact, there may be situations in which a pattern has been created with one particular size of stone, but that stone only comes packaged with two other sizes. This means that the designer will have to plan how the other components are used in the overall plan. This is usually accomplished by adding a border or an accent. As a result, overages or shortages may occur in certain patterns. The designer and/or installer of Unilock products accepts all responsibility for design and all associated costs incurred as a result of applying any of Unilock's suggested design patterns in a project. Please plan your project and review your order carefully prior to ordering.

## TRANSFERABLE LIFETIME GUARANTEE

Unilock provides a Transferable Lifetime Guarantee\* on the structural integrity of our paving stones, slabs and retaining wall units to the original purchaser of the product for residential use. Any materials installed and maintained to our guidelines, and subject to normal wear, that prove defective, will be replaced without cost. Color matching cannot be guaranteed and replacement labor is not included. Proof of purchase is required.

Excessive defective material (over the industry accepted normal of 2% for non-tumbled unit pavers) delivered to the purchaser will be replaced free of charge if a written claim is made within 5 days of delivery from the manufacturer. Such claims will not constitute reason for delaying payment. All goods shall be deemed accepted if completely installed. Inspect concrete products prior to opening bundle packaging to ensure that shape and color are as ordered. Unsatisfactory material must be available for inspection by Unilock to entitle the purchaser to any adjustment or credit. Inspect all concrete units during installation and set aside any which are chipped or cracked to use for any cut pieces required. The color of concrete products may vary significantly between production lots. Always install concrete units from several bundles simultaneously to ensure proper distribution of color. Prior to final compaction, inspect installed pavers for good color distribution. Relocate certain pavers, if necessary, to achieve desired color blend. **Textured pavers and slabs require a buffer between the plate compactor and the paver surface to prevent scuffing.**

\*Transferable Lifetime Guarantee: Register your project within 60 days of your dated proof of purchase to ensure your Unilock Guarantee is fully transferable! Simply go online at [unilock.com](http://unilock.com) and follow instructions. Once processed, you will receive an original Transferable Warranty Certificate for your records.

## PRODUCT HANDLING WARNING

Bundle Straps Under Tension - Use extreme caution when removing or handling straps. Always wear gloves, goggles, safety footwear, and protective clothing when removing or handling straps. Failure to do so may result in serious bodily injury or loss of sight.

Cut all concrete products only in well ventilated areas. Inhalation of dust is a serious health risk. A "NIOSH" (US) or a "CSA" (CDN) approved respirator, safety goggles, hearing protectors, and gloves must be worn at all times. Always "wet-cut" or "wet grind" concrete products to minimize dust.

Do not stack bundled concrete products higher than 2 bundles high. Contents of the bundle may be unstable and subject to topple when stacked. Always use extreme caution and appropriate equipment when transporting or storing bundled concrete products. Failure to do so may result in serious bodily injury or death. Always obey gross vehicle weight (GVW) loading limitations and regulations.

Hazard Rating: Fire 0, Health 1, Reactivity 0. See MSDS Concrete Masonry (Pavers). Contact Unilock for complete sheet or view safety information at [www.unilock.com](http://www.unilock.com).

*Unilock assumes no liability or responsibility for loss or damage, resulting from the improper use or handling of our products, or from failure to follow instructions, warnings, and/or advisories on the product label, and on the MSDS sheet.*

## TRADEMARK AND LEGAL INFORMATION

Umbriano™ is a trademark of Metten Stein + Design GmbH & Co KG used under license by Unilock.

Unilock Ltd. and Hengestone Holdings, Inc. are the owners or authorized users of all trademarks used in this publication unless otherwise specified.

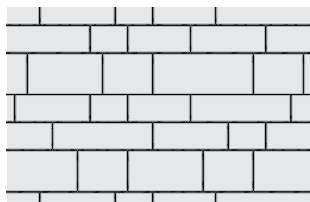
Measurements throughout this portfolio are nominal.

\*Colors shown in this catalog should be used only as a guide. Colors should always be chosen from actual samples. Contact your local Unilock representative for color availability in your area.

Not all products shown are available at all Unilock locations. Log on to [www.unilock.com](http://www.unilock.com) for availability.

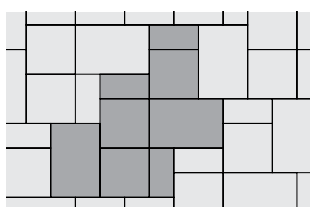
# Laying Patterns

## ARTLINE™

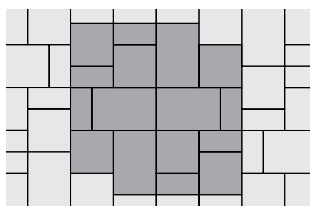


ARTLINE™ - 100% Random Bundle

## BEACON HILL® / BRISTOL VALLEY®

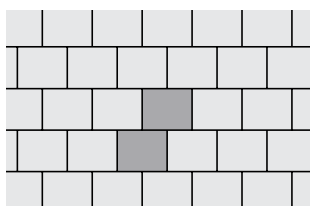


RANDOM A - 100% Random

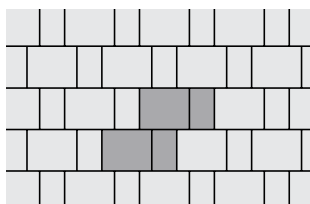


RANDOM B - 100% Random

## BRUSSELS BLOCK®

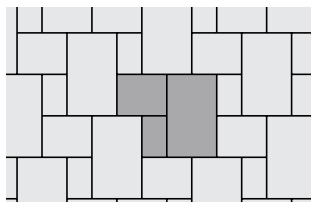


BRUSSELS B - 100% Standard

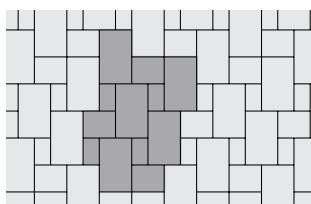


BRUSSELS H - 67% Standard, 33% Half Stone

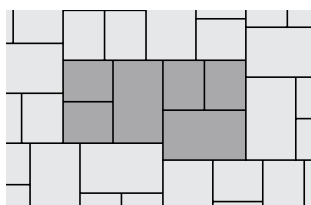
## BRUSSELS BLOCK®



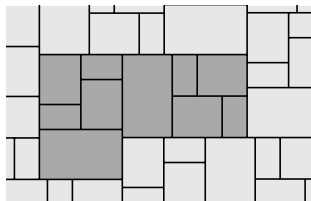
BRUSSELS Y - 57% XL, 29% Standard, 14% Half



BRUSSELS Z - 67% XL, 20% Standard, 13% Half

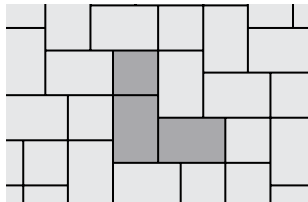


BRUSSELS AC - 50% XL, 50% Standard

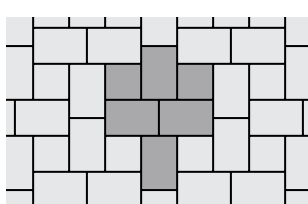


BRUSSELS AF - 40% XL, 40% Standard, 20% Half

## CAMELOT®

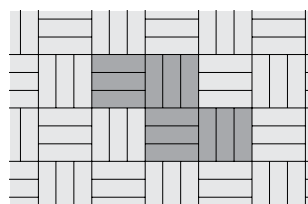


CAMELOT F - 75% Large Rectangle, 25% Square

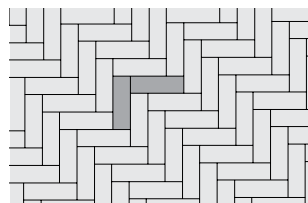


CAMELOT L - 75% Large Rectangle, 25% Square

## COPTHORNE®

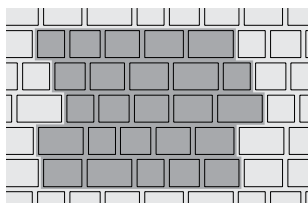


COPTHORNE A - 100% Standard



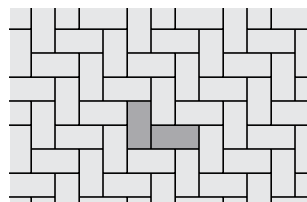
COPTHORNE B - 100% Standard

## COURTSTONE®

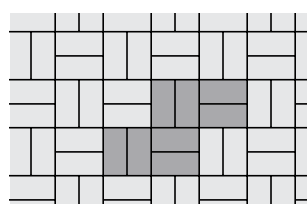


COURTSTONE A - 100% Random Bundle

## HOLLANDSTONE®

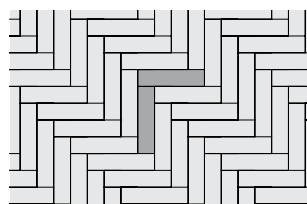


HOLLANDSTONE C - 100% Standard

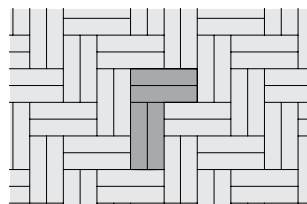


HOLLANDSTONE D - 100% Standard

## MATTONI™



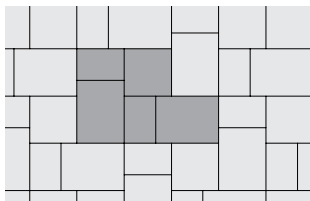
MATTONI A - 100% Standard



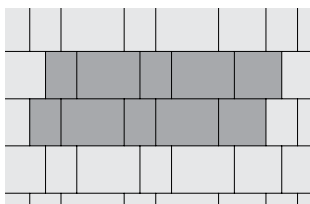
MATTONI B - 100% Standard

# Laying Patterns

## RICHCLIFF®

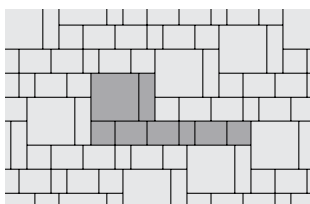


**RICHCLIFF® A** - 100% Random

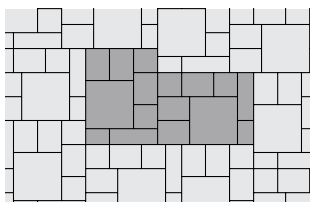


**RICHCLIFF® B** - 100% Random

## SERIES™ RANDOM

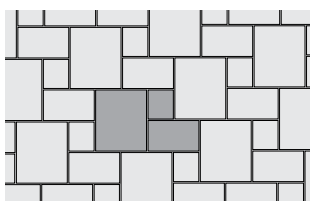


**SERIES** - 100% Random

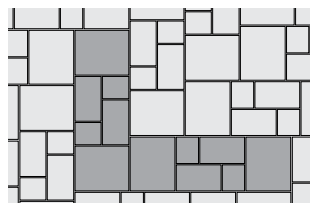


**SERIES** - 100% Random

## THORNBURY™

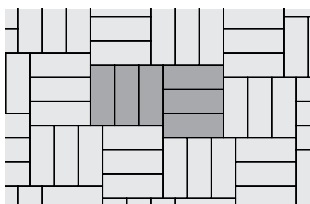


**THORNBURY® A** - 100% Random

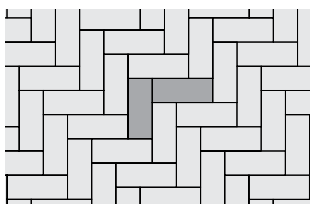


**THORNBURY® B** - 100% Random

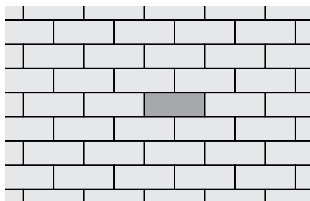
## TOWN HALL®



**TOWN HALL® A** - 100% Standard

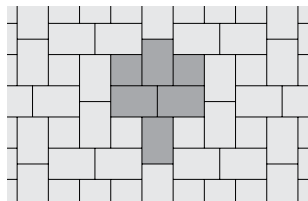


**TOWN HALL® B** - 100% Standard

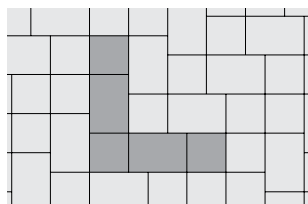


**TOWN HALL® C** - 100% Standard

## TRANSITION™

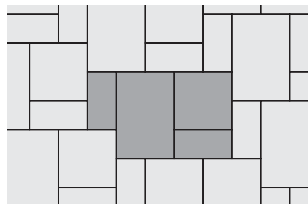


**TRANSITION L** - 75% Large Rectangle, 25% Square

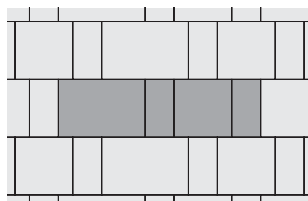


**TRANSITION K** - 67% Large Rectangle, 33% Square

## TREO®



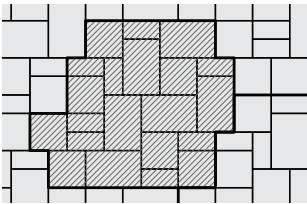
**TREO A** - 100% Random



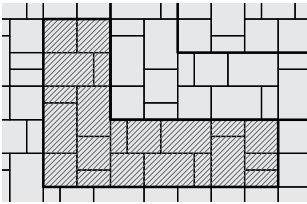
**TREO B** - 100% Random

# Laying Patterns

## TREO® PERMEABLE

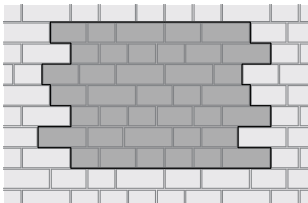


TREO R - Random Bundle - 45% Large Rectangle, 35% Square, 20% Small Rectangle



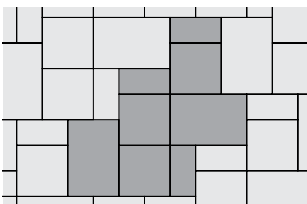
TREO S - Random Bundle - 45% Large Rectangle, 35% Square, 20% Small Rectangle

## TRIBECA COBBLE™

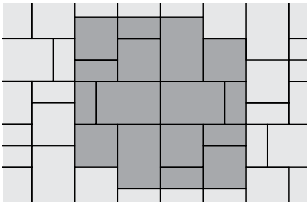


TRIBECA COBBLE™ - 100% Random Bundle

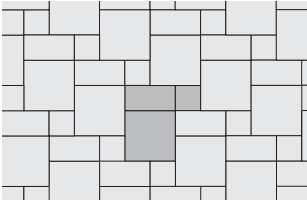
## UMBRIANO® 60MM



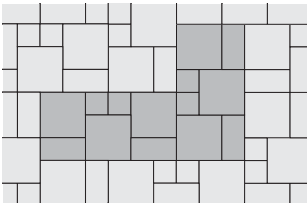
UMBRIANO A - 100% Random



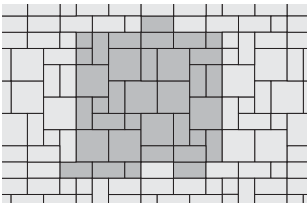
UMBRIANO B - 100% Random



UMBRIANO A - 100% Random

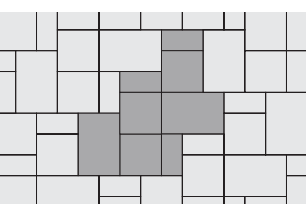


UMBRIANO B - 100% Random



UMBRIANO C - 100% Random

## WESTPORT



WESTPORT B - 100% Random



# Finishes



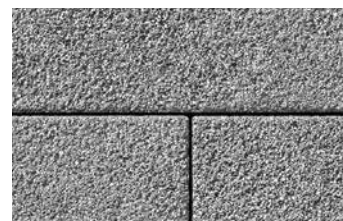
BRUSHED



COBBLESTONE



WEATHERED



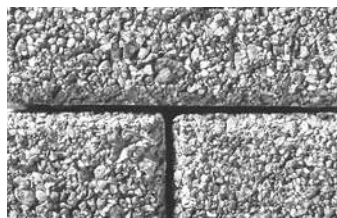
REVELA



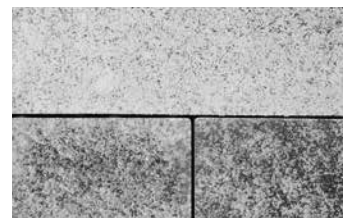
FLAGSTONE



SMOOTH



WASHED



SMOOTH - ZERO BEVEL



SPLIT



TIMEWORN



SPLIT AND WEATHERED



STANDARD

## Color Blend Descriptions

COLOR NAME	DESCRIPTION	COLOR NAME	DESCRIPTION
Basalt	Blue-Black	Heritage Red	Burgundy Red and Basalt
Bavarian Blend	White, Buff and Charcoal	Limestone	Light Grey
Black Granite	Black Granite and Charcoal	Midnight Sky	Charcoal and Black Flake
Coastal Slate	Grey and Tan	Opal	Light Grey and White
Cremo	Cream and Buff	Pebble Taupe	Tan and Brown
Crystalline Basalt	Granite and Black Metallic	Rustic Red	Red and Charcoal
Dawn Mist	Grey and Tan	Sierra	Buff, Charcoal and Brown
Fossil	Tan, Charcoal and Natural	Steel Blue	Grey and Blue
Granite	Charcoal and Natural	Steel Mountain	Charcoal and Light Grey
Heritage Brown	Dark Brown and Salmon	Summer Wheat	Cream White with Pale Yellow and Beige Particles
Heritage Clay	Burnt Clay and Basalt	Winter Marvel	White and Black Flake

Colors shown in this brochure should be used only as a guide. Colors should always be chosen from actual samples.

# Product Directory

## UNIT PAVERS

Product	Page	Finish	Pedestrian	Residential Vehicular	Commercial Vehicular	Environmental	For Borders & Accents
ADA Paver	4	W	✓				
Anchorlock™	4	S	✓	✓	✓		
Arcana EASYCLEAN	5	SM	✓				
Artline™ Smooth	6	SM	✓	✓			
Artline™ EASYCLEAN	7	S	✓	✓			
Beacon Hill™ Flagstone	8	F	✓	80mm			
Beacon Hill™ Smooth	10	SM	✓	80mm			
Bristol Valley® EASYCLEAN	12	S	✓				
Brussels Block®	13	W	✓	✓			✓
Camelot™	14	S	✓	✓			✓
Copthorne®	15	T	✓	✓			✓
Courtstone®	16	C	✓	✓			✓
Dura-Mat™	17	S			✓	✓	
Eco-Line®	18	CU	✓	✓	✓	✓	
Eco-Optiloc™	19	CU	✓	✓	✓	✓	
Eco-Priora™	20	CU	✓	✓	✓	✓	✓
Eco-Promenade™	21	CU	✓	✓	✓	✓	✓
Eco-Stone™	22	CU	✓	✓	✓	✓	✓
Granito™ EASYCLEAN	23	S	✓	✓			
Hex™ Paver	24	S	✓	✓	80mm		
Hollandstone™	25	S	✓	✓	80mm		✓
Il Campo®	26	B	✓	✓	✓		✓
Mattoni™ EASYCLEAN	27	T	✓	✓			✓
Natural Stone	28		✓				✓
Optiloc™	33	S	✓	✓	✓		
Porcelain	34		✓				✓
Promenade™ Plank Paver	35	CU	✓	✓	✓		
Richcliff®	36	F	✓	✓			✓
Senzo™ EASYCLEAN	37	SM	✓	✓	✓		✓
Series™	38	WS	✓	✓	✓		✓
Skyline	40	S	✓				
Thornbury™ Smooth	41	SM	✓	✓	✓	✓	
Town Hall™	42	T	✓	✓	✓	✓	✓
Transition™	43	F	✓	✓			
Treo™ Classic	44	S	✓	✓			
Treo™ Premier	45	F	✓	✓			
Treo™ Smooth	46	SM	✓	✓		✓	
Tribeca Cobble™	47	W/C	✓	✓		✓	✓
Turfstone™	48	S		✓	✓	✓	
Umbriano™ EASYCLEAN	49	SZ	✓	70mm	80mm		✓
Westport™ EASYCLEAN	51	F	✓	✓			✓

## RETAINING WALLS

Product	Page	Finish	Gardens	Retaining Walls	Steps	Seatwalls	Pillars
Brussels Dimensional System™	52	W	✓		✓	✓	✓
Concord Wall™	53	SP	✓	✓	✓		✓
DuraHold™2	54	S		✓			
Estate Wall™	55	SP/W	✓		✓	✓	✓
Lineo™ Dimensional Stone	61	SM	✓		✓	✓	✓
Rivercrest® Wall	63	F	✓	✓	✓	✓	✓
SienaEdge™	65	SP		✓	✓	✓	
SienaStone™	66	SP		✓	✓		
U-Cara®	67	Various	✓	✓	✓	✓	✓

Finishes: B=Brushed; C=Cobblestone; D=Dimpled; DW=Dimpled and Weathered; F=Flagstone; S=Standard; SM=Smooth; SZ=Smooth Zero Bevel; SP=Split; SP/W=Split and Weathered; T=Timeworn; W=Weathered; WS=Washed

This application chart should only be used as a guide. Site conditions, base materials, pattern and frequency of use may vary the performance of various types and styles of products.

This image shows a single sheet of white paper with horizontal ruling lines. The lines are evenly spaced and run across the width of the page. There are no margins, text, or other markings on the paper.



**BOSTON**  
(508) 278-4536

**CHICAGO**  
(630) 892-9191

**MILWAUKEE**  
(262) 742-3890

**KANSAS**  
(913) 417-7985

**MICHIGAN**  
(248) 437-7037

**NEW YORK**  
(845) 278-6700

**MID-ATLANTIC**  
(202) 798-2060

**ONTARIO**  
(416) 646-9000

**CINCINNATI/KY/TN**  
(513) 202-0219

**OHIO/WESTERN PA/  
WNY&CNY**  
(330) 927-4000

**UNILOCK.COM | 1-800-UNILOCK**

©2021 Hengestone Holdings, Inc.