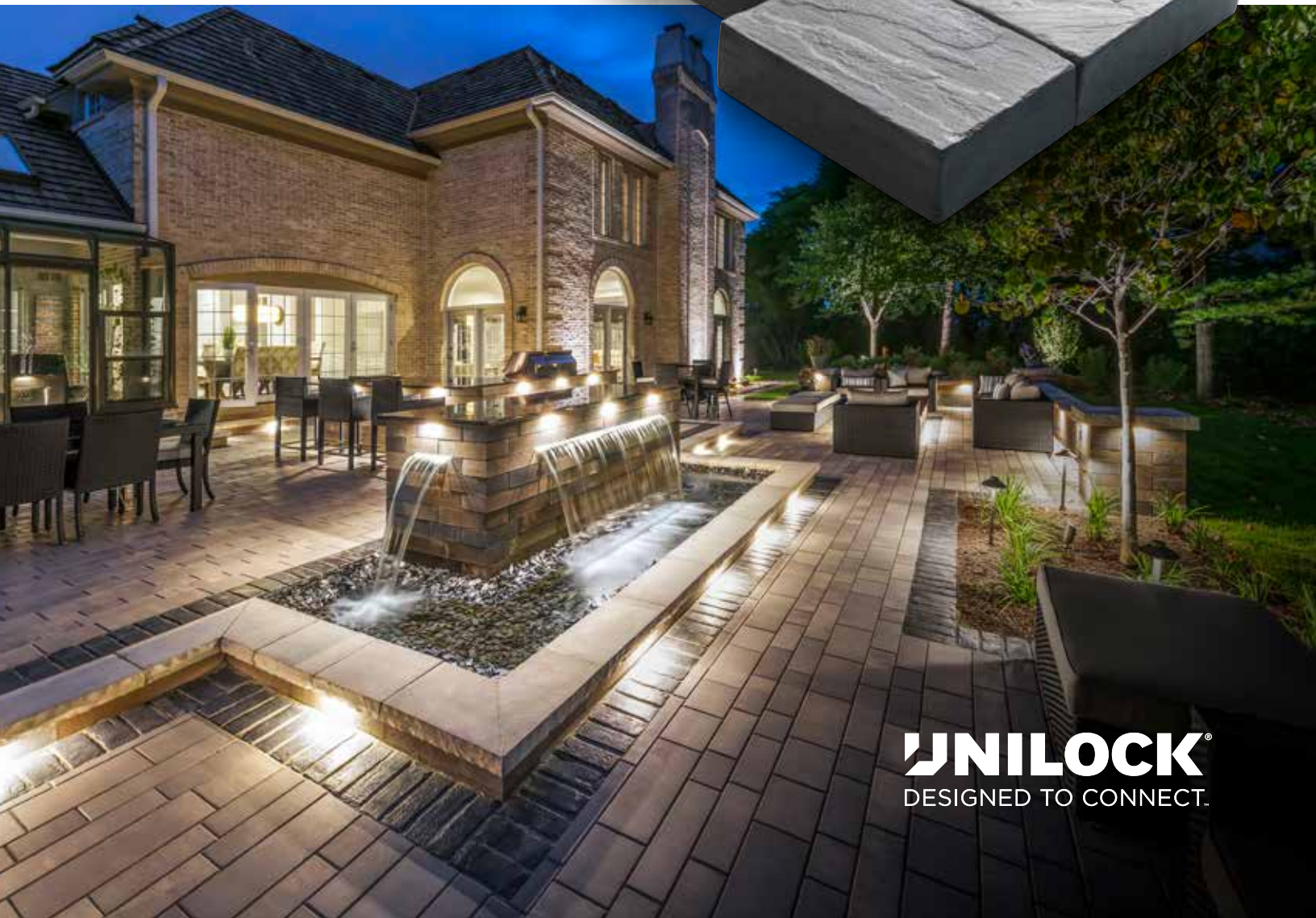




2018 PRODUCT DATA



UNILOCK®
DESIGNED TO CONNECT.

UNILOCK® QUALITY

GUARANTEED

GOOD CLASSIC

This is how the first pavers were manufactured. The product mix of large and small aggregates is consistent, from top to bottom, with color mixed throughout. The Unilock Classic pavers we manufacture exceed all ASTM standards for quality and strength.



BETTER ENDURACOLOR™

EnduraColor products are manufactured in a two-step process which combines a base of coarser aggregates for a stronger foundation, with concentrated color and wear-resistant finer aggregates on top. EnduraColor products are highly resistant to fading because the top layer prevents large, lighter color aggregates from showing through.

ENDURACOLOR™
PLUS ARCHITECTURAL FINISHES

THE BEST CHOICE.

ONLY UNILOCK OFFERS
ENDURACOLOR PLUS ARCHITECTURAL FINISHES.

These products set a new standard for everlasting beauty thanks to proprietary blends of some of nature's highest performing minerals such as granite and quartz, combined with manufacturing technologies that are exclusive to Unilock.



EXCLUSIVE UNILOCK TECHNOLOGIES

REALA™

Ultra realistic textures cast from Natural Stone, brick and historic cobblestones.

ULTIMA™

A proprietary manufacturing process creates pavers with up to four times the strength of poured concrete.

COLORFUSION™

A proprietary technology that disperses color randomly for a natural granite-like appearance.

EASYSOIL™

Factory sealed to provide integral surface protection from stains

There are two Clean Factors (CF®) to choose from:

CLEAN FACTORS (CF)	CF 90	CF 100
Pavers are pre-sealed at the factory	*	*
Enhanced resistance to weathering	*	*
Reduced dirt absorption	*	**
Stains from leaves, coffee, ketchup, mustard, wine and BBQ oils are easier to remove	*	**

NEW FOR 2018



BEACON HILL SMOOTH

5



U-CARA™

33

PAVERS

- 2 Ada Paver™
- 2 Arcana
- 3 Artline™
- 4 Anchorlock®
- 4 Beacon Hill™ Flagstone
- 5 Beacon Hill™ Smooth
- 5 **NEW!** Bristol Valley®
- 6 Brussels Block®
- 6 Brussels Premier™
- 7 Camelot™
- 7 Copthorne®
- 8 Courtstone®
- 9 Eco-Line®
- 9 Eco-Optiloc™
- 10 Eco-Priora™
- 10 Eco-Promenade®
- 11 Hollandstone™
- 11 Holland™ Premier
- 12 Il Campo®
- 12 Mattoni
- 13 Natural Stone
- 14 Olde Greenwich Cobble®
- 14 Optiloc®
- 15 Porcelain Tile
- 16 Skyline 24 x 24
- 16 Promenade™ Plank Paver
- 17 Richcliff®
- 17 Rivenstone™
- 18 Senzo™
- 18 Series™
- 19 Thornbury™
- 19 Town Hall®
- 20 Tribeca Cobble™
- 20 Turfstone™
- 21 Umbriano®
- 22 Westport™
- 23 Yorkstone™

RETAINING WALLS

- 24 Brussels Dimensional Stone®
- 25 Cumberland Wall®
- 26 DuraHold®
- 27 Estate Wall®
- 28 Lineo™ Dimensional Stone
- 29 Olde Quarry®
- 30 Pisa2®
- 31 Rivercrest® Wall
- 33 U-Cara™ **NEW!**
- 35 Ledgestone™ Pillar Cap, Coping, Fullnose & Steps
- 35 Universal Coping **NEW!**
- 36 Brussels Fullnose™
- 36 6" x 12" Fullnose
- 37 SienaStone®
- 38 Fire Pit Kits - Sunset and Rivercrest®

PRODUCT & INSTALLATION INFORMATION

- 39 Laying Patterns
- 41 Unilock Elements
- 44 Cleaners, Sealers & Accessories
- 51 Accessory Quick Reference Guide
- 53 Calculations
- 53 Sealer Best Practices
- 54 Easy-Pro™ & Polysand Best Practices
- 55 Terms & Conditions
- 55 Freight Rates
- 56 Important Notes
- 57 Color Blends
- 58 Product Directory



This symbol indicates that the product facilitates the flow of water from the surface into the joints and into the ground below.

Unilock contact information
1-800-Unilock
Orders@Unilock.com
Customer Service Fax #: 630-892-2066

ADA PAVER™

Special Order / Non-Stock



CHARCOAL



RED



STANDARD
12 x 12 x 2³/₄"
30 x 30 x 7cm

SPECIAL ORDER



Stones & Bundling	Unit	SqFt Per				Per Bundle		Soldier LnFt Per			Sailor LnFt per			Units Per			Lbs Per		
	Thickness	Bundle	Layer	Section	Stone	Layers	Sections	SqFt	Section	Bundle	SqFt	Section	Bundle	SqFt	Section	Bundle	Layer	Section	Bundle
Chicago Manufacturing																			
12"x12"	2 ³ / ₄ " (7cm)	93.04	11.63	-	0.969	8	-	0.985	23.6	94.5	-	-	-	1.03	-	96	395	-	3,160

Notes: **Sold in full bundles only. Special Order for standard colors - Lead time required.** Minimum quantities apply. All measurements are nominal.

Internal Use Only. ADA CH

ARCANA

Stocked at Aurora & Elkhorn (Transferrable upon request to Tonganoxie)

ENDURACOLOR™
PLUS ARCHITECTURAL FINISHES



LUGANO



MODENA



CORVARA
NEW FOR 2018



VIVANTO



TECHNICAL ADVANTAGE

EasyClean™ Stain Resistance - CF 100

An integral surface protection that allows for easier cleanup of spills when they happen, and before a stain can develop.



24 x 24
23⁷/₈ x 23⁷/₈ x 2"
60.6 x 60.6 x 5cm



18 x 24
17⁷/₈ x 23⁷/₈ x 2"
45.3 x 60.6 x 5cm



12 x 24
11⁷/₈ x 23⁷/₈ x 2"
30.1 x 60.6 x 5cm

Stones & Bundling	Unit	SqFt Per				Per Bundle		Soldier LnFt Per			Sailor LnFt per			Units Per			Lbs Per		
	Thickness	Bundle	Layer	Section	Stone	Layers	Sections	SqFt	Section	Bundle	SqFt	Section	Bundle	SqFt	Section	Bundle	Layer	Section	Bundle
Chicago Manufacturing																			
24"x24"	2" (5cm)	72.00	8.00	-	4.000	9	-	-	-	-	-	-	-	0.25	-	18	192	-	1,728
18"x24"	2" (5cm)	54.00	6.00	-	3.000	9	-	-	-	-	-	-	-	0.33	-	18	144	-	1,296
12"x24"	2" (5cm)	36.00	4.00	-	2.000	9	-	-	-	-	-	-	-	0.50	-	18	96	-	864

Notes: **Sold in full bundles only and is produced and sold on a required and refundable skid.** Unilock offers adjustable and stackable pedestal systems; please contact your Territory Manager for pricing and availability. **Product is not intended for vehicular applications.** Please refer to the Polymeric Sand Best Practices on page 54 and Important Notice on page 56. All measurements are nominal. Unilock recommends to install Arcana using T and X plastic spacers (See page 49) Please contact your sales manager for more information

Internal Use Only. ARC CH

SMOOTH FINISH



BAVARIAN BLEND



STEEL MOUNTAIN



COPPER RIDGE

TECHNICAL
ADVANTAGEEasyClean™ Stain
Resistance - CF 90

(Umbriano finishes only)

An integral surface protection that allows for easier cleanup of spills when they happen, and before a stain can develop.

ANTIQUED FINISH



BAVARIAN BLEND



STEEL MOUNTAIN



COPPER RIDGE

Unit A	Unit B	Unit C	Unit D
6¾" x 4⅞" x 2¾" 16.9 x 12.5 x 7cm	10⅞" x 4⅞" x 2¾" 26.25 x 12.5 x 7cm	13⅞" x 4⅞" x 2¾" 33.75 x 12.5 x 7cm	17¾" x 4⅞" x 2¾" 45 x 12.5 x 7cm
Unit E	Unit F	Unit G	
8⅞" x 7½" x 2¾" 22.5 x 18.75 x 7cm	13⅞" x 7½" x 2¾" 33.75 x 18.75 x 7cm	17¾" x 7½" x 2¾" 45 x 18.75 x 7cm	

Individual units cannot be sold separately

Random Bundle



Stones & Bundling	Unit	SqFt Per				Per Bundle		Soldier LnFt Per			Sailor LnFt per			Units Per			Lbs Per		
	Thickness	Bundle	Layer	Section	Stone	Layers	Sections	SqFt	Section	Bundle	SqFt	Section	Bundle	SqFt	Section	Bundle	Layer	Section	Bundle
Marengo Manufacturing																			
Random Bundle	-	93.25	11.66	-	-	8	-	-	-	-	-	-	-	-	-	192	370	-	2,963
Unit A	2¾" (7cm)	-	-	-	0.227	-	-	-	-	-	-	-	-	4.40	-	32	-	-	-
Unit B	2¾" (7cm)	-	-	-	0.353	-	-	-	-	-	-	-	-	2.83	-	32	-	-	-
Unit C	2¾" (7cm)	-	-	-	0.454	-	-	-	-	-	-	-	-	2.20	-	32	-	-	-
Unit D	2¾" (7cm)	-	-	-	0.605	-	-	-	-	-	-	-	-	1.65	-	32	-	-	-
Unit E	2¾" (7cm)	-	-	-	0.454	-	-	-	-	-	-	-	-	2.20	-	32	-	-	-
Unit F	2¾" (7cm)	-	-	-	0.681	-	-	-	-	-	-	-	-	1.47	-	16	-	-	-
Unit G	2¾" (7cm)	-	-	-	0.908	-	-	-	-	-	-	-	-	1.10	-	16	-	-	-

Notes: **Sold in full bundles only and is produced and sold on a required, refundable skid.** Antique, Smooth and Umbriano finish offer EasyClean™ Stain Resistance technology. **Important: A urethane rubber paver mat must be used to prevent scuffing.** All measurements are nominal. Contact Unilock for more information.

Internal Use Only. ART ON

TO CREATE A ONE-OF-A-KIND CUSTOM LOOK, ARTLINE IS ALSO AVAILABLE IN THESE FINISHES:

IL CAMPO® FINISH



BAVARIAN BLEND

IL CAMPO® FINISH



GRANITE BLEND

UMBRIANO® FINISH



MIDNIGHT SKY - CF90

UMBRIANO® FINISH



WINTER MARVEL - CF90



STANDARD FINISH
CUSTOM FINISH
AVAILABLE



ANCHORLOCK®
8⁷/₈ x 8⁷/₈ x 3¹/₈"
22.5 x 22.5 x 8cm
SPECIAL ORDER



Stones & Bundling	Unit	SqFt Per				Per Bundle		Soldier LnFt Per			Sailor LnFt per			Units Per			Lbs Per		
	Thickness	Bundle	Layer	Section	Stone	Layers	Sections	SqFt	Section	Bundle	SqFt	Section	Bundle	SqFt	Section	Bundle	Layer	Section	Bundle
Chicago Manufacturing																			
Standard	3 ¹ / ₈ " (8cm)	86.72	10.84	-	0.417	8	-	-	-	-	-	-	-	2.40	-	208	374	-	2,991
Anchorlock 1/3 Stone	3 ¹ / ₈ " (8cm)	-	-	-	-	-	-	-	-	-	-	-	-	-	-	16	-	-	-

Notes: **Sold in full bundles only. Special Order Only - Lead time required.** Minimum quantities apply. This product is optimized for mechanical installation. 1/3 stones incorporated within the standard bundle - 1/3 stone not shown. All measurements are nominal.

Internal Use Only. ANC CH

BEACON HILL™ FLAGSTONE

Stocked at Aurora, Elkhorn, Marengo & Tonganoxie

ENDURACOLOR™



ALPINE GREY



BAVARIAN BLEND



SYCAMORE



LARGE RECTANGLE
21¹/₄ x 14¹/₈ x 2³/₈"
54 x 36 x 6cm

SQUARE
14¹/₈ x 14¹/₈ x 2³/₈"
36 x 36 x 6cm

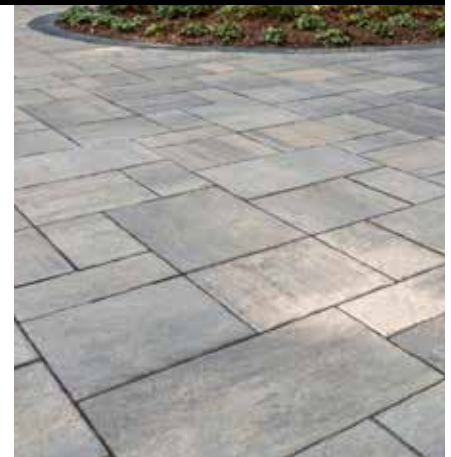
SMALL RECTANGLE
7⁷/₁₆ x 14¹/₈ x 2³/₈"
18 x 36 x 6cm

Also available in 8cm

Random Bundle
Individual units cannot
be sold separately



XL UNIT
21 x 35 x 2³/₈"
54 x 90 x 6cm
NEW FOR 2018
Sold Separately



Stones & Bundling	Unit	SqFt Per				Per Bundle		Soldier LnFt Per			Sailor LnFt per			Units Per			Lbs Per		
	Thickness	Bundle	Layer	Section	Stone	Layers	Sections	SqFt	Section	Bundle	SqFt	Section	Bundle	SqFt	Section	Bundle	Layer	Section	Bundle
Marengo Manufacturing																			
6cm Random Bundle		104.00	10.40	-	-	10	-	-	-	-	-	-	88.58	-	-	80	290	-	2,896
Large Rectangle	2 ³ / ₈ " (6cm)	41.68	-	-	2.084	-	-	-	-	-	-	-	35.43	0.48	-	20	-	-	-
Square	2 ³ / ₈ " (6cm)	41.55	-	-	1.385	-	-	-	-	-	-	-	35.43	0.72	-	30	-	-	-
Small Rectangle	2 ³ / ₈ " (6cm)	20.77	-	-	0.692	-	-	-	-	-	-	-	17.72	1.43	-	30	-	-	-
XL Unit	2 ³ / ₈ " (6cm)	104	10.4	-	5.2	10	-	-	-	-	-	-	-	0.19	-	20	293	-	2960
8cm Random Bundle		72.80	10.40	-	-	7	-	-	-	-	-	-	62	-	-	56	362	-	2,534
Large Rectangle	3 ¹ / ₈ " (8cm)	-	-	-	2.084	-	-	-	-	-	-	-	24.8	0.48	-	14	-	-	-
Square	3 ¹ / ₈ " (8cm)	-	-	-	1.385	-	-	-	-	-	-	-	24.8	0.72	-	21	-	-	-
Small Rectangle	3 ¹ / ₈ " (8cm)	-	-	-	0.692	-	-	-	-	-	-	-	12.4	1.43	-	21	-	-	-

Notes: **Sold in full bundles only and is produced and sold on a required, refundable skid. 6cm product is not intended for vehicular applications. Important: A urethane rubber paver mat must be used to prevent scuffing.** All measurements are nominal. Contact Unilock for more information.

Internal Use Only. BHF CH

BEACON HILL™ SMOOTH

NEW FOR 2018 ENDURACOLOR™



BAVARIAN



GRANITE FUSION



OPAL



XL UNIT
21 x 35 x 2 3/8"
54 x 90 x 6cm
SOLD SEPARATELY

			Random Bundle Individual units cannot be sold separately
LARGE RECTANGLE 21 1/4 x 14 1/8 x 2 3/8" 54cm x 36cm x 6 & 8cm	SQUARE 14 1/8 x 14 1/8 x 2 3/8" 36cm x 36cm x 6 & 8cm	SMALL RECTANGLE 7 1/16 x 14 1/8 x 2 3/8" 18cm x 36cm x 6 & 8cm	

Stones & Bundling	Unit	SqFt Per				Per Bundle		Soldier LnFt Per			Sailor LnFt per			Units Per			Lbs Per		
	Thickness	Bundle	Layer	Section	Stone	Layers	Sections	SqFt	Section	Bundle	SqFt	Section	Bundle	SqFt	Section	Bundle	Layer	Section	Bundle
Manufactured in Marengo, Stocked in Aurora, Elkhorn, Marengo & Tonganoxie																			
Random Bundle*	-	104	10.40	-	-	10	-	-	-	-	-	-	88.58	-	-	80	290	-	2,896
Large Rectangle	2 3/8" (6cm)	41.68	-	-	2.084	-	-	-	-	-	-	-	35.43	0.48	-	20	-	-	-
Square	2 3/8" (6cm)	41.55	-	-	1.385	-	-	-	-	-	-	-	35.43	0.72	-	30	-	-	-
Small Rectangle	2 3/8" (6cm)	20.77	-	-	0.692	-	-	-	-	-	-	-	17.72	1.43	-	30	-	-	-
XL Unit	2 3/8" (6cm)	104	10.4	-	5.2	10	-	-	-	-	-	-	-	0.19	-	20	293	-	2,929

Notes: **Sold in full bundles only.** All measurements are nominal. **Important:** Textured surfaces require a buffer between the plate compactor and the paver surface to prevent scuffing. **6cm product is not intended for vehicular applications. *8cm Thickness also available for special order - lead time required.** Please see page 4 for packaging information. Please contact Unioc for more information.

Internal Use Only. BHF CH

BRISTOL VALLEY®

Stocked at Aurora, Elkhorn, Marengo & Tonganoxie

ENDURACOLOR™



BAVARIAN BLEND



STEEL MOUNTAIN



COPPER RIDGE

TECHNICAL ADVANTAGE

EasyClean™ Stain Resistance - CF 90

An integral surface protection that allows for easier cleanup of spills when they happen, and before a stain can develop.

8cm available for Special Order

			Random Bundle Individual units cannot be sold separately	
LARGE RECTANGLE 21 1/4 x 14 1/8 x 2 3/8" 54 x 36 x 6cm	SQUARE 14 1/8 x 14 1/8 x 2 3/8" 36 x 36 x 6cm	SMALL RECTANGLE 7 1/16 x 14 1/8 x 2 3/8" 18 x 36 x 6cm		XL UNIT NEW FOR 2018 21 x 35 x 2 3/8" 54 x 90 x 6cm Sold Separately



Stones & Bundling	Unit	SqFt Per				Per Bundle		Soldier LnFt Per			Sailor LnFt per			Units Per			Lbs Per		
	Thickness	Bundle	Layer	Section	Stone	Layers	Sections	SqFt	Section	Bundle	SqFt	Section	Bundle	SqFt	Section	Bundle	Layer	Section	Bundle
Marengo Manufacturing																			
6cm Random Bundle		104.00	10.40	-	-	10	-	-	-	-	-	-	88.58	-	-	80	293	-	2,929
Large Rectangle	2 3/8" (6cm)	41.68	-	-	2.084	-	-	-	-	-	-	-	35.43	0.48	-	20	-	-	-
Square	2 3/8" (6cm)	41.55	-	-	1.385	-	-	-	-	-	-	-	35.43	0.72	-	30	-	-	-
Small Rectangle	2 3/8" (6cm)	20.77	-	-	0.692	-	-	-	-	-	-	-	17.72	1.43	-	30	-	-	-
XL Unit	2 3/8" (6cm)	104	10.4	-	5.2	10	-	-	-	-	-	-	-	0.19	-	20	884	-	2,960
8cm Random Bundle SPECIAL ORDER		72.80	10.40	-	-	7	-	-	-	-	-	-	62	-	-	56	390	-	2,730
Large Rectangle	3 1/8" (8cm)	-	-	-	2.084	-	-	-	-	-	-	-	24.8	0.48	-	14	-	-	-
Square	3 1/8" (8cm)	-	-	-	1.385	-	-	-	-	-	-	-	24.8	0.72	-	21	-	-	-
Small Rectangle	3 1/8" (8cm)	-	-	-	0.692	-	-	-	-	-	-	-	12.4	1.43	-	21	-	-	-

Notes: **8cm product is SPECIAL ORDER.** Sold in full bundles only and is produced and sold on a required, refundable skid. **6cm product is not intended for vehicular applications. Important:** A urethane rubber paver mat must be used to prevent scuffing. All measurements are nominal. Contact Unioc for more information.

Internal Use Only. BRV CH

BRUSSELS BLOCK®

Stocked at Aurora, Elkhorn & Tonganoxie



COFFEE CREEK



LIMESTONE



PRAIRIE



SANDSTONE



SIERRA



XL STONE
8⁷/₄ x 13³/₄ x 2³/₄"
20.8 x 34.8 x 7cm



STANDARD STONE
6⁷/₈ x 8¹/₄ x 2³/₄"
17.5 x 20.8 x 7cm



HALF STONE
4¹/₈ x 6⁷/₈ x 2³/₄"
10.4 x 17.5 x 7cm



Stones & Bundling	Unit	SqFt Per				Per Bundle		Soldier LnFt Per			Sailor LnFt per			Units Per			Lbs Per		
	Thickness	Bundle	Layer	Section	Stone	Layers	Sections	SqFt	Section	Bundle	SqFt	Section	Bundle	SqFt	Section	Bundle	Layer	Section	Bundle
Chicago Manufacturing																			
XL	2 ³ / ₄ " (7cm)	93.86	9.39	31.29	0.782	10	3	1.146	27.3	81.9	-	-	-	1.28	40	120	310	1,032	3,097
Standard	2 ³ / ₄ " (7cm)	94.91	11.86	15.82	0.395	8	6	0.697	22.7	136.2	-	-	-	2.53	40	240	382	509	3,056
Half	2 ³ / ₄ " (7cm)	88.70	11.09	12.67	0.198	8	7	0.580	21.8	152.9	-	-	-	5.05	64	448	355	406	2,840

Notes: XL Unit can also be used as a coping or step tread. Please see page 36 for Brussels Fullnose and 6" x 12" Fullnose packaging information.

All measurements are nominal. Contact Unilock for more information.

Internal Use Only. BBK CH

BRUSSELS PREMIER™

Stocked at Aurora, Elkhorn & Tonganoxie

ENDURACOLOR™



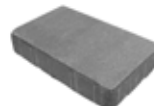
ALPINE GREY



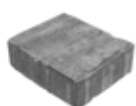
BAVARIAN BLEND



SYCAMORE



XL STONE
8⁷/₄ x 13³/₄ x 2³/₄"
20.8 x 34.8 x 7cm



STANDARD STONE
6⁷/₈ x 8¹/₄ x 2³/₄"
17.5 x 20.8 x 7cm



HALF STONE
4¹/₈ x 6⁷/₈ x 2³/₄"
10.4 x 17.5 x 7cm



Stones & Bundling	Unit	SqFt Per				Per Bundle		Soldier LnFt Per			Sailor LnFt per			Units Per			Lbs Per		
	Thickness	Bundle	Layer	Section	Stone	Layers	Sections	SqFt	Section	Bundle	SqFt	Section	Bundle	SqFt	Section	Bundle	Layer	Section	Bundle
Chicago Manufacturing																			
XL	2 ³ / ₄ " (7cm)	93.86	9.39	-	0.782	10	-	1.146	-	81.9	-	-	-	1.28	-	120	310	-	3,097
Standard	2 ³ / ₄ " (7cm)	94.91	11.86	-	0.395	8	-	0.697	-	136.2	-	-	-	2.53	-	240	382	-	3,056
Half Stone	2 ³ / ₄ " (7cm)	88.70	11.09	-	12.67	8	-	0.580	-	152.9	-	-	-	5.05	-	448	355	-	2840

Notes: **Sold in full bundles only. Important: A urethane rubber paver mat must be used to prevent scuffing.** All measurements are nominal. Contact Unilock for more information.

Internal Use Only. BPR CH



AUTUMN RED



SIERRA



FIELDSTONE



CHARCOAL



RECTANGLE
6³/₄ x 9¹/₂ x 3¹/₈"
16 x 24 x 8cm

Stones & Bundling	Unit	SqFt Per				Per Bundle		Soldier LnFt Per			Sailor LnFt per			Units Per			Lbs Per		
	Thickness	Bundle	Layer	Section	Stone	Layers	Sections	SqFt	Section	Bundle	SqFt	Section	Bundle	SqFt	Section	Bundle	Layer	Section	Bundle
Chicago Manufacturing																			
Rectangle	3 ¹ / ₈ " (8cm)	74.40	12.40	14.88	0.413	6	5	0.787	18.9	94.5	-	-	-	2.42	36	180	453	543	2,717

Notes: **Important:** A urethane rubber paver mat must be used to prevent scuffing. All measurements are nominal. Contact Unilock for more information.

Internal Use Only. CAM CH



BURGUNDY RED



BURNT CLAY



OLD OAK



BASALT



3 COLOR BLEND
Sold Separately/
Blended on Site



STEEL BLUE
NEW FOR 2018



STANDARD
2¹/₂ x 7⁷/₈ x 2³/₈"
6.5 x 20 x 6cm

TECHNICAL ADVANTAGES

Reala™ Surface Technology

Ultra-realistic textures cast from natural stone, brick and historic cobblestones.

Ultima™ Concrete Technology

This proprietary manufacturing process creates pavers and walls with up to four times the strength of poured concrete.



Stones & Bundling	Unit	SqFt Per				Per Bundle		Soldier LnFt Per			Sailor LnFt per			Units Per			Lbs Per		
	Thickness	Bundle	Layer	Section	Stone	Layers	Sections	SqFt	Section	Bundle	SqFt	Section	Bundle	SqFt	Section	Bundle	Layer	Section	Bundle
Ayr Manufacturing																			
Standard	2 ³ / ₈ " (6cm)	89.20	11.15	-	0.149	8	-	0.697	-	127.9	-	-	-	6.73	-	600	294	-	2,349

Notes: **Sold in full bundles only and is produced and sold on a required, refundable skid. Important:** A urethane rubber paver mat must be used to prevent scuffing. Please refer to the Polymeric Sand Best Practices on page 54 and Important Notice on page 56. All measurements are nominal. Contact Unilock for more information.

Internal Use Only. COP ON



BASALT



BELGIAN BLUE



DAWN MIST



PEBBLE TAUPE

BASALT/
BELGIAN BLUE
Sold Separately/
Blended on SiteDAWN MIST/
PEBBLE TAUPE
Sold Separately/
Blended on Site**TECHNICAL ADVANTAGES****Reala™ Surface Technology**

Ultra-realistic textures cast from natural stone, brick and historic cobblestones.

Ultima™ Concrete Technology

This proprietary manufacturing process creates pavers and walls with up to four times the strength of poured concrete.

XL
RECTANGLE
5½ x 8¾ x 2¾"
13 x 21.5 x 6cmLARGE
RECTANGLE
5½ x 7¼ x 2¾"
13 x 18.5 x 6cmRECTANGLE
5½ x 6½ x 2¾"
13 x 16.5 x 6cmSMALL
RECTANGLE
5½ x 5¼ x 2¾"
13 x 14.5 x 6cmSQUARE
5½ x 5½ x 2¾"
13 x 13 x 6cm

Random Bundle
Individual units cannot
be sold separately



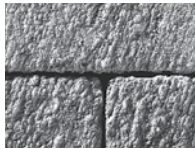
Stones & Bundling	Unit	SqFt Per				Per Bundle		Soldier LnFt Per			Sailor LnFt per			Units Per			Lbs Per		
	Thickness	Bundle	Layer	Section	Stone	Layers	Sections	SqFt	Section	Bundle	SqFt	Section	Bundle	SqFt	Section	Bundle	Layer	Section	Bundle
Ayr Manufacturing																			
Random Bundle	-	98.30	12.29	-	-	8	-	-	-	-	-	-	221.5	-	-	384	291	-	2,326
XL Rectangle	2¾" (6cm)	-	-	-	0.301	-	-	-	-	-	0.427	-	90.3	3.32	-	128	-	-	-
Large Rectangle	2¾" (6cm)	-	-	-	0.259	-	-	-	-	-	0.427	-	38.8	3.86	-	64	-	-	-
Rectangle	2¾" (6cm)	-	-	-	0.231	-	-	-	-	-	0.427	-	34.6	4.33	-	64	-	-	-
Small Rectangle	2¾" (6cm)	-	-	-	0.203	-	-	-	-	-	0.427	-	30.4	4.93	-	64	-	-	-
Square	2¾" (6cm)	-	-	-	0.182	-	-	-	-	-	0.427	-	27.3	5.50	-	64	-	-	-

Notes: **Sold in full bundles only and is produced and sold on a required, refundable skid. Important:** A urethane rubber paver mat must be used to prevent scuffing. Please refer to the Polymeric Sand Best Practices on page 54 and Important Notice on page 56. All measurements are nominal. Contact Unilock for more information.

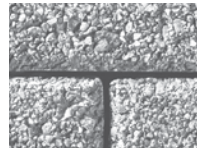
Internal Use Only. CRT ON



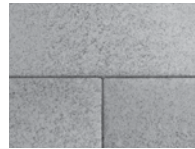
STANDARD FINISH



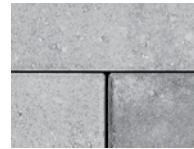
IL CAMPO FINISH



SERIES™ FINISH



UMBRIANO® FINISH



PREMIER FINISH

**SPECIAL ORDER**UNIT A
14 x 3⁵/₁₆ x 4"
35.7 x 8.4 x 10cmUNIT B
12¹/₂ x 3⁵/₁₆ x 4"
31.7 x 8.4 x 10cmUNIT C
11 x 3⁵/₁₆ x 4"
27.7 x 8.4 x 10cmUNIT D
9³/₈ x 3⁵/₁₆ x 4"
23.7 x 8.4 x 10cmUNIT E
14 x 4¹/₂ x 4"
35.7 x 11.4 x 10cmUNIT F
12¹/₂ x 4¹/₂ x 4"
31.7 x 11.4 x 10cmUNIT G
11 x 4¹/₂ x 4"
27.7 x 11.4 x 10cmUNIT H
9³/₈ x 4¹/₂ x 4"
23.7 x 11.4 x 10cm

Individual units cannot be sold separately

Random Bundle

Stones & Bundling	Unit Thickness	SqFt Per				Per Bundle		Soldier LnFt Per			Sailor LnFt per			Units Per			Lbs Per		
		Bundle	Layer	Section	Stone	Layers	Sections	SqFt	Section	Bundle	SqFt	Section	Bundle	SqFt	Section	Bundle	Layer	Section	Bundle
Chicago Manufacturing																			
Random Bundle	-	55.17	11.03	-	-	5	-	-	-	-	-	-	-	-	-	160	513	-	2,564
Unit A	4" (10cm)	-	-	-	0.323	-	-	-	-	-	-	-	-	3.10	-	20	-	-	-
Unit B	4" (10cm)	-	-	-	0.287	-	-	-	-	-	-	-	-	3.49	-	20	-	-	-
Unit C	4" (10cm)	-	-	-	0.250	-	-	-	-	-	-	-	-	3.99	-	20	-	-	-
Unit D	4" (10cm)	-	-	-	0.214	-	-	-	-	-	-	-	-	4.67	-	20	-	-	-
Unit E	4" (10cm)	-	-	-	0.438	-	-	-	-	-	-	-	-	2.28	-	20	-	-	-
Unit F	4" (10cm)	-	-	-	0.389	-	-	-	-	-	-	-	-	2.57	-	20	-	-	-
Unit G	4" (10cm)	-	-	-	0.340	-	-	-	-	-	-	-	-	2.94	-	20	-	-	-
Unit H	4" (10cm)	-	-	-	0.291	-	-	-	-	-	-	-	-	3.44	-	20	-	-	-

Notes: **Sold in full bundles only and is produced and sold on a required, refundable skid.** Custom finish and color options are available. **Special order lead time is required,** minimum quantities apply. **Important: A urethane rubber paver mat must be used to prevent scuffing.** This product is optimized for mechanical installation. For permeable installations, Unilock recommends using Easy-Pro™ or granite chips for joint filler. All measurements are nominal. Contact Unilock for more information.

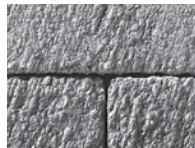
Internal Use Only. EOL CH



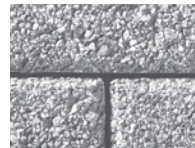
STANDARD FINISH



PREMIER FINISH



IL CAMPO® FINISH



SERIES™ FINISH

STANDARD
10¹/₄ x 10¹/₄ x 3¹/₈"
26 x 26 x 8cm
SPECIAL ORDER

Stones & Bundling	Unit Thickness	SqFt Per				Per Bundle		Soldier LnFt Per			Sailor LnFt per			Units Per			Lbs Per		
		Bundle	Layer	Section	Stone	Layers	Sections	SqFt	Section	Bundle	SqFt	Section	Bundle	SqFt	Section	Bundle	Layer	Section	Bundle
Chicago Manufacturing																			
Standard	3 ¹ / ₈ " (8cm)	84.40	10.55	-	0.502	8	-	-	-	-	-	-	-	1.99	-	168	363	-	2,908

Notes: **Sold in full bundles only and is produced and sold on a required, refundable skid.** Custom finish and color options are available. **Special order - lead time is required,** minimum quantities apply. **Important: A urethane rubber paver mat must be used to prevent scuffing.** This product is optimized for mechanical installation. For permeable installations, Unilock recommends using granite chips for joint filler. All measurements are nominal. Contact Unilock for more information.

Internal Use Only. EOP CH

ECO-PRIORA™ Standard & Antiqued Finish Stocked at Aurora, Elkhorn & Tonganoxie



RIVER
STANDARD FINISH



SIERRA
STANDARD FINISH



SIERRA
ANTIQUED FINISH



RIVER
ANTIQUED FINISH



RECTANGLE
5 x 10 x 3 1/8"
12 x 24 x 8cm




Stones & Bundling Chicago Manufacturing	Unit	SqFt Per				Per Bundle		Soldier LnFt Per			Sailor LnFt per			Units Per			Lbs Per		
	Thickness	Bundle	Layer	Section	Stone	Layers	Sections	SqFt	Section	Bundle	SqFt	Section	Bundle	SqFt	Section	Bundle	Layer	Section	Bundle
5" x 10"	3 1/8" (8cm)	74.59	10.66	-	0.304	7	-	0.773	-	96.5	-	-	-	3.29	-	245	381	-	2,669
Herringbone 5x10 *	3 1/8" (8cm)	74.59	10.66	-	0.300	7	-	0.761	-	98.0	-	-	-	3.34	-	249	381	-	2,669

Notes: ***Special Order - Lead time is required, minimum quantities apply. Sold in full bundles only and sold on a required, refundable skid. Important: A urethane rubber paver mat must be used to prevent scuffing.** For permeable installations, Unilock recommends using EasyPro™ or Granite Chips for joint filler. All measurements are nominal. Contact Unilock for more information.

Internal Use Only. EPA CH

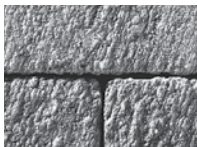
ECO-PROMENADE®

 Special Order / Non-Stock

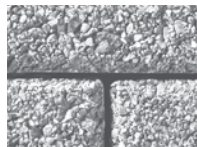
ENDURACOLOR™ & ENDURACOLOR™ PLUS ARCHITECTURAL FINISHES



PREMIER FINISH



IL CAMPO® FINISH



SERIES™ FINISH



UMBRIANO® FINISH



STANDARD FINISH



3 x 12 x 4"
7.5 x 30 x 10cm
SPECIAL ORDER



Stones & Bundling	Unit	SqFt Per				Per Bundle		Soldier LnFt Per			Sailor LnFt per			Units Per			Lbs Per		
	Thickness	Bundle	Layer	Section	Stone	Layers	Sections	SqFt	Section	Bundle	SqFt	Section	Bundle	SqFt	Section	Bundle	Layer	Section	Bundle
3" x 12" Permeable	4" (10cm)	63.94	10.66	-	0.242	6	-	-	-	-	-	-	-	4.13	-	-	465	-	2788

Notes: **Sold in full bundles only and is produced and sold on a required, refundable skid.** Custom finish and color options are available. **Special order - lead time is required,** minimum quantities apply. **Important: A urethane rubber paver mat must be used to prevent scuffing.** For permeable installations, Unilock recommends using Easy-Pro™ or granite chips for joint filler. All measurements are nominal. Contact Unilock for more information.

Internal Use Only. ECP CH



AUTUMN RED



CHARCOAL



PRAIRIE



RED



RIVER



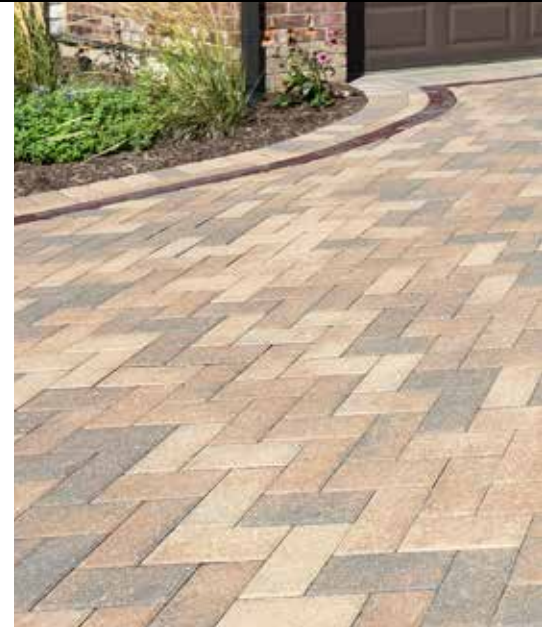
RUSTIC RED



SIERRA



HOLLANDSTONE
4 x 8 x 2 5/8"
10 x 20 x 6cm



Stones & Bundling	Unit	SqFt Per				Per Bundle		Soldier LnFt Per			Sailor LnFt per			Units Per			Lbs Per		
	Thickness	Bundle	Layer	Section	Stone	Layers	Sections	SqFt	Section	Bundle	SqFt	Section	Bundle	SqFt	Section	Bundle	Layer	Section	Bundle
Chicago Manufacturing																			
Standard	2 5/8" (6cm)	117.90	11.79	19.65	0.218	10	6	0.665	29.5	177.2	-	-	-	4.58	90	540	306	511	3,065
Heavy Duty *	3 1/8" (8cm)	82.50	11.79	13.75	0.218	7	6	0.665	20.7	124.0	-	-	-	4.58	63	378	423	493	2,960

Notes: ***Special Order - Lead time is required, minimum quantities apply, sold in full bundles only.** All measurements are nominal. Contact Unilock for more information.

Internal Use Only. HOL CH

HOLLAND™ PREMIER 6CM

Stocked at Aurora, Elkhorn & Tonganoxie

ENDURACOLOR



CHARLESTON



GRANITE BLEND



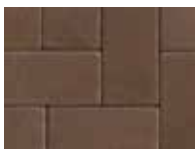
HERITAGE BROWN



RIVER



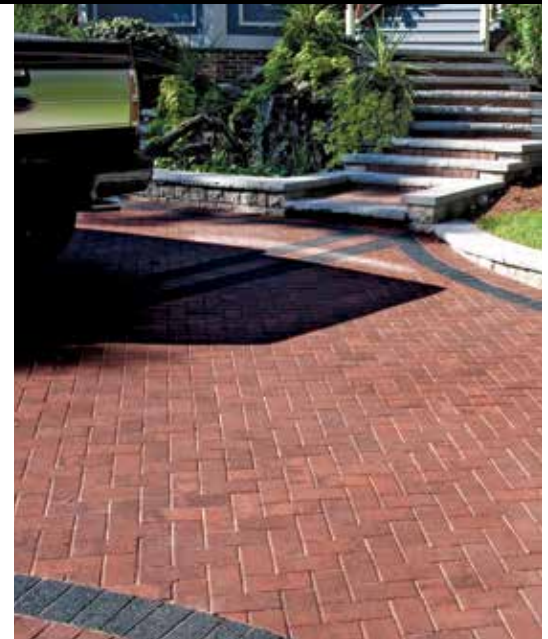
SIERRA



BROWN



STANDARD
4 x 8 x 2 3/8"
10 x 20 x 6cm



Stones & Bundling	Unit	SqFt Per				Per Bundle		Soldier LnFt Per			Sailor LnFt per			Units Per			Lbs Per		
	Thickness	Bundle	Layer	Section	Stone	Layers	Sections	SqFt	Section	Bundle	SqFt	Section	Bundle	SqFt	Section	Bundle	Layer	Section	Bundle
Chicago Manufacturing																			
Standard	2 3/8" (6cm)	117.90	11.79	-	0.218	10	-	0.665	-	177.2	-	-	-	4.58	-	540	306	-	3,065

Notes: **Sold in full bundles only and is produced and sold on a required, refundable skid. Important: A urethane rubber paver mat must be used to prevent scuffing.** All measurements are nominal. Contact Unilock for more information.

Internal Use Only. HPR CH



BAVARIAN BLEND

COFFEE CREEK
Available in Random
Bundle Only

HERITAGE BROWN

GRANITE
NEW FOR 2018
Only Available
in 4x8

ARTLINE SIZES AVAILABLE, SEE PAGE 3



BAVARIAN



GRANITE

6 x 8 x 2³/₄"
15 x 20 x 7cm6 x 6 x 2³/₄"
15 x 15 x 7cm4 x 6 x 2³/₄"
10 x 15 x 7cm

Individual units cannot
be sold separately

Random
Bundle

4 x 8 x 2³/₄"
10 x 20 x 7cm

Stones & Bundling	Unit	SqFt Per				Per Bundle		Soldier LnFt Per			Sailor LnFt per			Units Per			Lbs Per		
	Thickness	Bundle	Layer	Section	Stone	Layers	Sections	SqFt	Section	Bundle	SqFt	Section	Bundle	SqFt	Section	Bundle	Layer	Section	Bundle
Chicago Manufacturing																			
4" x 8"	2 ³ / ₄ " (7cm)	106.11	11.79	17.69	0.218	9	6	0.655	27.0	162.0	-	-	-	4.58	81	486	362	543	3,261
Random Bundle	-	89.12	11.14	-	-	8	-	-	-	154.9	-	-	-	-	-	336	376	-	3,008
6" x 8"	2 ³ / ₄ " (7cm)	-	-	-	0.323	-	-	0.656	-	78.7	-	-	-	3.10	-	160	-	-	-
6" x 6"	2 ³ / ₄ " (7cm)	-	-	-	0.242	-	-	0.492	-	55.1	-	-	-	4.13	-	112	-	-	-
4" x 6"	2 ³ / ₄ " (7cm)	-	-	-	0.161	-	-	0.492	-	21.0	-	-	-	6.19	-	64	-	-	-

Notes: **Random bundle is sold in full bundles only.** Additional sizes are available for special orders, minimum quantities apply.

Important: A urethane rubber paver mat must be used to prevent scuffing. Please refer to the Sealer Best Practices on page 54 and Important Notice on page 56. All measurements are nominal. Contact Unilock for more information.

Internal Use Only. ILC CH

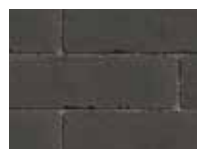
MATTONI

Stocked at Aurora, Elkhorn, Marengo & Tonganoxie

ENDURACOLOR®



COCOA BROWN



DARK CHARCOAL



SABLE BLEND

CHARLESTON
NEW FOR 2018STANDARD
2¹/₄ x 9¹/₂ x 2³/₄"
6 x 24 x 7cm

Stones & Bundling	Unit	SqFt Per				Per Bundle		Soldier LnFt Per			Sailor LnFt per			Units Per			Lbs Per		
	Thickness	Bundle	Layer	Section	Stone	Layers	Sections	SqFt	Section	Bundle	SqFt	Section	Bundle	SqFt	Section	Bundle	Layer	Section	Bundle
Marengo Manufacturing																			
Standard	2 ³ / ₄ " (7cm)	89.28	11.16	-	0.155	8	-	-	-	108	-	-	-	6.45	-	576	357	-	2,859

Notes: **Sold in full bundles only and produced and sold on a required, refundable skid.** **Important:** A urethane rubber paver mat must be used to prevent scuffing. All measurements are nominal. Contact Unilock for more information.

Internal Use Only. MAT CH

NATURAL STONE

Stocked at Marengo (Transferrable upon request to Tonganoxie)

SANDSTONE



AUTUMN HARVEST

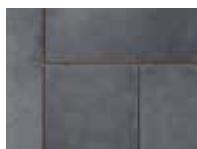


STONE CLIFF GREY



INDIAN COAST

LIMESTONE



BLACK RIVER

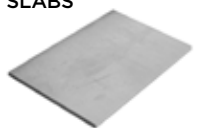


WINTER MIST

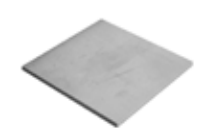


HEARTHSTONE
NEW FOR 2018

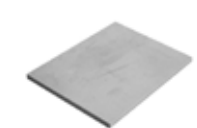
SLABS



24 x 36 x 7/8"
60 x 90 x 2.2cm



24 x 24 x 7/8"
60 x 60 x 2.2cm



18 x 24 x 7/8"
45 x 60 x 2.2cm



12 x 24 x 7/8"
30 x 60 x 2.2cm

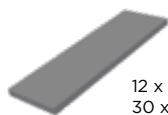


Fair
stone

Stones & Bundling	Unit	SqFt Per		Units Per		Lbs Per	
	Thickness	Crate	Stone	SqFt	Crate	Unit	Crate
Slabs							
24" x 36"	.87" (2.2cm)	180	6	0.1720	30	71.64	2,149
24" x 24"	.87" (2.2cm)	160	4	0.2581	40	47.76	1,910
18" x 24"	.87" (2.2cm)	186	3	0.3441	62	35.82	2,221
12" x 24"	.87" (2.2cm)	180	2	0.5161	90	23.88	2,149

NATURAL EDGE COPING

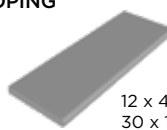
AVAILABLE IN:
Autumn Harvest
Black River
Indian Coast
Stone Cliff Grey



12 x 48 x 2"
30 x 120 x 5cm

4' FULLNOSE COPING

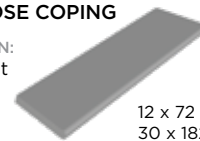
AVAILABLE IN:
Autumn Harvest
Indian Coast
Stone Cliff Grey



12 x 48 x 2"
30 x 120 x 5cm

6' FULLNOSE COPING

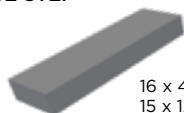
AVAILABLE IN:
Indian Coast



12 x 72 x 2"
30 x 182 x 5cm

NATURAL EDGE STEP

AVAILABLE IN:
Black River
Indian Coast



16 x 48 x 6"
15 x 120 x 15cm

24" PILLAR CAP

AVAILABLE IN:
Black River



24 x 24 x 2.5"
60 x 60 x 6.4cm

28" PILLAR CAP

AVAILABLE IN:
Black River



28 x 28 x 2.5"
71 x 71 x 6.4cm

	Unit	LnFt Per		Units Per	Lbs Per	
Stones & Bundling	Thickness	Crate	Stone	Crate	Unit	Crate
Copings, Step & Pillar Caps						
Natural Edge Coping	2" (5cm)	80	4	20	105.82	2,116
4' Fullnose Coping	2" (5cm)	80	4	20	105.82	2,116
6' Fullnose Coping	2" (5cm)	72	6	12	159.83	1,918
Natural Edge Step	6" (15cm)	24	4	6	421.08	2,526
24" Pillar Cap	2.5" (6.4cm)	-	-	14	136.7	1,914
28" Pillar Cap	2.5" (6.4cm)	-	-	14	200.2	2,802

Notes: **Sold in full crates only.** Natural Stone is available for purchase by Unilock Authorized Dealers only. Unilock offers adjustable and stackable pedestal systems; please contact your Territory Manager for pricing and availability. All measurements are nominal. Balck River Color will lighten over time to a light grey color without sealer application.

OLDE GREENWICH COBBLE®

Stocked at Aurora, Elkhorn & Tonganoxie



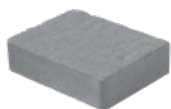
AUTUMN RED



RIVER BLEND



SIERRA



LARGE RECTANGLE
7 x 9½ x 2⅝"
18 x 24 x 6cm



MEDIUM RECTANGLE
4¾ x 7 x 2⅝"
12 x 18 x 6cm



Stones & Bundling	Unit	SqFt Per				Per Bundle		Soldier LnFt Per			Sailor LnFt per			Units Per			Lbs Per		
	Thickness	Bundle	Layer	Section	Stone	Layers	Sections	SqFt	Section	Bundle	SqFt	Section	Bundle	SqFt	Section	Bundle	Layer	Section	Bundle
Chicago Manufacturing																			
Large Rectangle	2⅝" (6cm)	113.70	11.37	22.74	0.455	10	5	0.770	29.5	147.6	-	-	-	2.20	50	250	304	608	3,040
Medium Rectangle	2⅝" (6cm)	97.60	9.76	16.27	0.232	10	6	0.590	27.6	165.4	-	-	-	4.30	70	420	258	430	2,581

Notes: **Important:** A urethane rubber paver mat must be used to prevent scuffing. All measurements are nominal. Contact Unilock for more information.

Internal Use Only. OGC CH

OPTILOC®

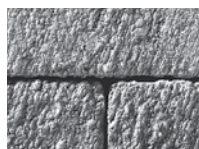
Special Order / Non-Stock



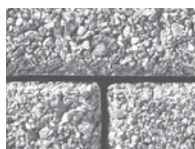
STANDARD FINISH



PREMIER FINISH



IL CAMPO® FINISH



SERIES™ FINISH



STANDARD
10¼ x 10¼ x 3⅞"
26 x 26 x 8cm
SPECIAL ORDER



Stones & Bundling	Unit	SqFt Per				Per Bundle		Soldier LnFt Per			Sailor LnFt per			Units Per			Lbs Per		
	Thickness	Bundle	Layer	Section	Stone	Layers	Sections	SqFt	Section	Bundle	SqFt	Section	Bundle	SqFt	Section	Bundle	Layer	Section	Bundle
Chicago Manufacturing																			
Standard *	3⅞" (8cm)	77.33	9.67	-	0.537	8	-	-	-	-	-	-	-	1.86	-	144	350	-	2,801

Notes: *** Special Order - Lead time is required**, minimum quantities apply. **Sold in full bundles only**. This product is optimized for mechanical installation. All measurements are nominal. Contact Unilock for more information.

Internal Use Only. OPL CH

PORCELAIN

Stocked at Marengo (Transferrable upon request to Tonganoxie)

DEL CONCA USA



TRAVSTONE
BEIGE



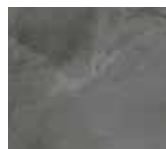
TRAVSTONE
NOCE



GOTHAM
BEIGE



GOTHAM
GREY



GOTHAM
NERO

DEL CONCA



EPOKAL
BEIGE SCURO



EPOKAL
GREY



EPOKAL
BEIGE



DAVINCI
BIRCH



DAVINCI
DRIFTWOOD



DOLOMITI
BLONDE



DOLOMITI
BROWN



DOLOMITI
GREY



23 5/8 x 23 5/8 x 3/4"
60 x 60 x 2cm



15 3/4 x 31 1/2 x 3/4"
40 x 80 x 2cm
EPOKAL TILES ONLY



15 3/4 x 47 3/4 x 3/4"
40 x 120 x 2cm
DOLOMITI TILES ONLY

CAESAR
LA CULTURA DELLA MATERIA



BEOLA BIANCA



GOLDEN STONE



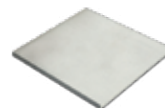
GRAUSTEIN



EIKON GEA



EIKON TITANIO



23 1/2 x 23 1/2 x 3/4"
60 x 60 x 2cm
CAESAR TILES ONLY

Stones & Bundling	Unit Thickness	SqFt Per			Boxes /Crate	Units Per		Lbs Per		
		Unit	Box	Crate		Box	Crate	SqFt	Box	Crate
Del Conca USA (60 x 60cm) 23 5/8" x 23 5/8"	.75" (2cm)	3.875	-	255.76	-	-	66	9.23	-	2,360
Travstone Beige										
Travstone Noce										
Gotham Beige										
Gotham Grey										
Gotham Nero										
Del Conca										
Epokal Tiles (40 x 80cm) 15 3/4" x 31 1/2"	.75" (2cm)	3.445	6.89	165.36	24	2	48	9.04	62.3	1,541
Epokal Beige Scuro										
Epokal Grey										
Epokal Beige										
Davinci Tiles (60 x 60cm) 23 5/8" x 23 5/8"	.75" (2cm)	3.875	7.75	248	32	2	64	9.04	70.1	2,293
Davinci Birch										
Davinci Driftwood										
DoloMiti Tiles (40 x 120cm) 15 3/4" x 47 3/4"	.75" (2cm)	5.17	5.17	279.18	54	1	54	9.64	50.7	2,736
DoloMiti Blonde										
DoloMiti Brown										
DoloMiti Grey										
Caesar Tiles (60 x 60cm) 23 1/2" x 23 1/2"	.75" (2cm)	3.875	7.75	232.5	30	2	60	9	72.6	2,178
Beola Bianca										
Golden Stone										
Graustein										
Eikon Gea										
Eikon Titanio										

Notes: **Sold in full bundles only.** All porcelain tile is available for purchase by Unilock Authorized Dealers only. Unilock offers adjustable and stackable pedestal systems; please contact your Territory Manager for pricing and availability. All measurements are nominal.



SS0083



MEDIUM GREY



Marengo Manufacturing
24 x 24"
23⁵/₈ x 23⁵/₈ x 2"
60.0 x 60.0 x 5cm

Chicago Manufacturing
24 x 24"
23³/₈ x 23³/₈ x 2"
60.6 x 60.6 x 5cm

Printed version of 2018
Product Data will show
Chicago Manufacturing.
Please refer to Marengo
Manufacturing below for
correct packaging information.



Stones & Bundling	Unit	SqFt Per				Per Bundle		Soldier LnFt Per			Sailor LnFt per			Units Per			Lbs Per		
	Thickness	Bundle	Layer	Section	Stone	Layers	Sections	SqFt	Section	Bundle	SqFt	Section	Bundle	SqFt	Section	Bundle	Layer	Section	Bundle
Marengo Manufacturing*																			
24 x 24 Slab*	2" (5cm)	77.50	8.00	-	3.876	9	-	-	-	-	-	-	-	0.25	-	20	197	-	1,776
Chicago Manufacturing*																			
24 x 24 Slab	2" (5cm)	72.00	8.00	-	4.000	9	-	-	-	-	-	-	-	0.25	-	18	192	-	1,728

Notes: *Skyline 24x24 will now be produced at our Marengo location. Please see updated packaging information above. Sold in full bundles only and is produced and sold on a required and refundable skid. Product is not intended for vehicular applications. Unilock offers adjustable and stackable pedestal systems; please contact your Territory Manager for pricing and availability. All measurements are nominal.

Internal Use Only. PRE CH

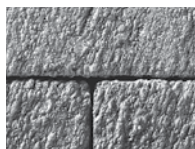
PROMENADE™ PLANK PAVER

Special Order / Non-Stock

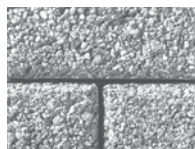
ENDURACOLOR & ENDURACOLOR PLUS ARCHITECTURAL FINISHES



PREMIER FINISH



IL CAMPO FINISH



SERIES™ FINISH



UMBRIANO FINISH



8 x 24 x 4" or 6"
20 x 60 x 10cm or 15cm
SPECIAL ORDER



6 x 24 x 2¹/₄" or 6"
15 x 60 x 7cm or 15cm
SPECIAL ORDER



4 x 16 x 4"
10 x 40 x 10cm
SPECIAL ORDER



STANDARD FINISH



4 x 12 x 4"
10 x 30 x 10cm
SPECIAL ORDER



3 x 12 x 4"
7.5 x 30 x 10cm
SPECIAL ORDER



Stones & Bundling	Unit	SqFt Per				Per Bundle		Soldier LnFt Per			Sailor LnFt per			Units Per			Lbs Per		
	Thickness	Bundle	Layer	Section	Stone	Layers	Sections	SqFt	Section	Bundle	SqFt	Section	Bundle	SqFt	Section	Bundle	Layer	Section	Bundle
Chicago Manufacturing																			
8" x 24"	4" (10cm)	51.67	10.33	-	1.292	5	-	-	-	-	-	-	-	0.77	-	40	479	-	2,395
8" x 24"	6" (15cm)	41.33	10.33	-	1.292	4	-	-	-	-	-	-	-	0.77	-	32	709	-	2,836
6" x 24"	2 ³ / ₄ " (7cm)	93.00	11.63	-	0.969	8	-	-	-	-	-	-	-	1.03	-	96	372	-	2,978
6" x 24"	6" (15cm)	46.50	11.63	-	0.969	4	-	-	-	-	-	-	-	1.03	-	48	819	-	3,278
4" x 16"	4" (10cm)	51.67	10.33	-	0.431	5	-	-	-	-	-	-	-	2.32	-	120	469	-	2,345
4" x 12"	4" (10cm)	58.13	11.63	-	0.363	5	-	-	-	-	-	-	-	2.75	-	160	532	-	2,659
3" x 12"	4" (10cm)	63.94	10.66	-	0.242	6	-	-	-	-	-	-	-	4.13	-	264	484	-	2,901

Notes: **Sold in full bundles only and is produced and sold on a required, refundable skid.** Custom finish and color options are available. **Special order - lead time is required,** minimum quantities apply. **Important: A urethane rubber paver mat must be used to prevent scuffing.** All measurements are nominal. Contact Unilock for more information.

Internal Use Only. PMD ON



DAWN MIST



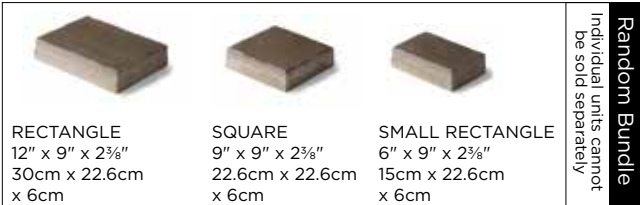
PEBBLE TAUPE



PEBBLE TAUPE /
DAWN MIST
Blended on site /
Sold Separately



SMOKE SHALE
NEW FOR 2018



RECTANGLE
12" x 9" x 2 3/8"
30cm x 22.6cm
x 6cm

SQUARE
9" x 9" x 2 3/8"
22.6cm x 22.6cm
x 6cm

SMALL RECTANGLE
6" x 9" x 2 3/8"
15cm x 22.6cm
x 6cm

Random Bundle
Individual units cannot
be sold separately



LARGE RECTANGLE
21 x 12 x 2 3/8"
52.8 x 30.2 x 6cm
SOLD SEPARATELY
COMING SOON IN 2018

TECHNICAL ADVANTAGES

Reala™ Surface Technology

Ultra-realistic textures cast from natural stone, brick and historic cobblestones.

Ultima™ Concrete Technology

This proprietary manufacturing process creates pavers and walls with up to four times the strength of poured concrete.

Stones & Bundling	Unit	SqFt Per				Per Bundle		Soldier LnFt Per			Sailor LnFt per			Units Per			Lbs Per		
	Thickness	Bundle	Layer	Section	Stone	Layers	Sections	SqFt	Section	Bundle	SqFt	Section	Bundle	SqFt	Section	Bundle	Layer	Section	Bundle
Ayr Manufacturing																			
Random Bundle	-	90.30	11.29	-	-	8	-	-	-	-	-	-	134.2	-	-	160	309	-	2,472
Large Rectangle	2 3/8" (6cm)	48.10	-	-	0.750	-	-	-	-	-	0.762	-	63.0	1.33	-	64	-	-	-
Square	2 3/8" (6cm)	18.10	-	-	0.575	-	-	-	-	-	0.775	-	23.7	1.74	-	32	-	-	-
Small Rectangle	2 3/8" (6cm)	24.10	-	-	0.375	-	-	-	-	-	0.506	-	47.5	2.67	-	64	-	-	-
COMING SOON Large Rectangle	2 3/8" (6cm)	82.39	-	-	1.716	-	-	-	-	-	-	-	-	-	-	48	-	-	2,410

Notes: **Sold in full bundles only and is produced and sold on a required, refundable skid.** **Important:** A urethane rubber paver mat must be used to prevent scuffing. Please refer to the Polymeric Sand Best Practices on page 54 and Important Notice on page 56. All measurements are nominal. Contact Unilock for more information.

Internal Use Only. RIC ON



BLUESTONE



CANYON



SAHARA

TECHNICAL ADVANTAGES

Reala™ Surface Technology

Ultra-realistic textures cast from natural stone, brick and historic cobblestones.



24 x 30 x 1 1/4"
60 x 76 x 4.5cm
NEW FOR 2018



24 x 24 x 1 1/4"
60 x 60 x 4.5cm



18 x 24 x 1 1/4"
45 x 60 x 4.5cm



12 x 24 x 1 1/4"
30 x 60 x 4.5cm



Stones & Bundling	Unit	SqFt Per				Per Bundle		Soldier LnFt Per			Sailor LnFt per			Units Per			Lbs Per		
	Thickness	Bundle	Layer	Section	Stone	Layers	Sections	SqFt	Section	Bundle	SqFt	Section	Bundle	SqFt	Section	Bundle	Layer	Section	Bundle
Chicago Manufacturing																			
24" x 30"	1 1/4" (4.5cm)	90.00	-	-	5.000	-	-	-	-	-	-	-	-	0.20	-	18	-	-	1,738
24" x 24"	1 1/4" (4.5cm)	72.00	-	-	4.000	-	-	-	-	-	-	-	-	0.25	-	18	-	-	1,353
18" x 24"	1 1/4" (4.5cm)	54.00	-	-	3.000	-	-	-	-	-	-	-	-	0.33	-	18	-	-	1,038
12" x 24"	1 1/4" (4.5cm)	36.00	-	-	2.000	-	-	-	-	-	-	-	-	0.50	-	18	-	-	700

Notes: **Sold in full bundles only and is produced and sold on a required, refundable skid.** **Important:** Do not use a vibratory plate compactor for the final compaction. **Product is not intended for vehicular applications.** Stones and coverages are designed to have up to 1/4" joint size. All measurements are nominal. Contact Unilock for more information.

Internal Use Only. RIV CH



CASTANO



NUVOLA



CREMO



RECTANGLE*
8 x 16 x 2 3/4"
20.8 x 41.6 x 7cm

Special Order

TECHNICAL ADVANTAGE

EasyClean™ Stain Resistance - CF 100

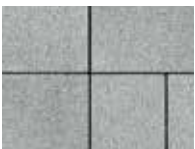
An integral surface protection that allows for easier cleanup of spills when they happen, and before a stain can develop.



	Unit	SqFt Per				Per Bundle		Soldier LnFt Per			Sailor LnFt per			Units Per			Lbs Per		
Stones & Bundling	Thickness	Bundle	Layer	Section	Stone	Layers	Sections	SqFt	Section	Bundle	SqFt	Section	Bundle	SqFt	Section	Bundle	Layer	Section	Bundle
Georgetown Manufacturing																			
8" x 16"	2¾" (7cm)	82.67	10.33	-	0.861	8	-	-	-	-	-	-	-	1.16	-	96	339	-	2,710

Notes: **Sold in full bundles only and is produced and sold on a required, refundable skid. Important: A urethane rubber paver mat must be used to prevent scuffing.** Please refer to the Polymeric Sand Best Practices on page 54 and Important Notice on page 56. All measurements are nominal. Contact Unilock for more information. ***Senzo is now special order - Lead time required, Minimum quantities apply.**

Internal Use Only. SZO ON



MINERAL ICE GREY



MOCHA BROWN
Available in 4x8 only



ONYX BLACK
Available in 4x8 only



GOLDEN TAN
Available in 4x8 only



COBALT GREY
Available in Random bundle only

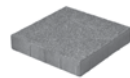


4 x 8 x 2 3/4"
10 x 20 x 7cm

Random Bundle available in Mineral Ice Grey and Cobalt Grey only



LARGE RECTANGLE
21 1/4 x 14 1/8 x 2 3/8"
54 x 36 x 6cm



SQUARE
14 1/8 x 14 1/8 x 2 3/8"
36 x 36 x 6cm



SMALL RECTANGLE
7 1/16 x 14 1/8 x 2 3/8"
18 x 36 x 6cm

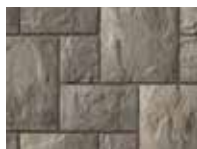
Random Bundle
Individual units cannot be sold separately



	Unit	SqFt Per				Per Bundle		Soldier LnFt Per			Sailor LnFt per			Units Per			Lbs Per		
Stones & Bundling	Thickness	Bundle	Layer	Section	Stone	Layers	Sections	SqFt	Section	Bundle	SqFt	Section	Bundle	SqFt	Section	Bundle	Layer	Section	Bundle
Chicago Manufacturing																			
4" x 8"	2¾" (7cm)	106.11	11.79	17.69	0.218	9	6	0.665	26.6	159.5	-	-	-	4.58	81	486	398	597	3,581
6cm Random Bundle (stocked in Mineral Ice and Cobalt Grey)		104.00	10.40	-	-	10	-	-	-	-	-	-	-	0.77	-	80	290	-	2,896
Large Rectangle	2⅜" (6cm)	-	-	-	2.093	-	-	-	-	-	-	-	-	0.48	-	20	-	-	-
Square	2⅜" (6cm)	-	-	-	1.395	-	-	-	-	-	-	-	-	0.72	-	30	-	-	-
Small Rectangle	2⅜" (6cm)	-	-	-	0.698	-	-	-	-	-	-	-	-	1.43	-	30	-	-	-

Notes: **Random Bundle is sold in full bundles only. Important: A urethane rubber paver mat must be used to prevent scuffing.** Please refer to the Sealer Best Practices on page 54 and Important Notice on page 56. All measurements are nominal. Contact Unilock for more information. Additional sizes are available for special orders, minimum quantities apply.

Internal Use Only. S3K CH



ALPINE GREY



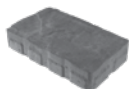
BAVARIAN BLEND



SYCAMORE



LARGE RECTANGLE
13¾ x 16½ x 2¾"
35 x 42 x 7cm



MEDIUM RECTANGLE
13¾ x 8¾ x 2¾"
35 x 21 x 7cm



SMALL RECTANGLE
6⅞ x 8¾ x 2¾"
17.3 x 21 x 7cm

Random Bundle
Individual units cannot
be sold separately

Stones & Bundling	Unit	SqFt Per				Per Bundle		Soldier LnFt Per			Sailor LnFt per			Units Per			Lbs Per		
	Thickness	Bundle	Layer	Section	Stone	Layers	Sections	SqFt	Section	Bundle	SqFt	Section	Bundle	SqFt	Section	Bundle	Layer	Section	Bundle
Marengo Manufacturing																			
Random Bundle	-	88.61	11.08	-	-	8	-	-	-	-	-	-	-	1.08	-	96	344	-	2,752
Large Rectangle	2¾" (7cm)	50.63	-	-	1.582	-	-	-	-	-	-	-	-	0.63	-	32	-	-	-
Med. Rectangle	2¾" (7cm)	25.32	-	-	0.791	-	-	-	-	-	-	-	-	1.26	-	32	-	-	-
Small Rectangle	2¾" (7cm)	12.66	-	-	0.391	-	-	-	-	-	-	-	-	2.56	-	32	-	-	-

Notes: **Sold in full bundles only and is produced and sold on a required, refundable skid.** **Important:** A urethane rubber paver mat must be used to prevent scuffing. For permeable installations, Unilock recommends using Easy-Pro™ or granite chips for joint filler. All measurements are nominal. Contact Unilock for more information.

Internal Use Only. THB CH



BURGUNDY RED



BURNT CLAY



OLD OAK



3 COLOR BLEND
Blended on Site /
Sold separately



BASALT



HERITAGE RED



HERITAGE CLAY



HERITAGE
2 COLOR BLEND
Blended on Site /
Sold Separately



STANDARD
4 x 9¾ x 2¾"
10 x 25 x 7cm

TECHNICAL ADVANTAGES

Reala™ Surface Technology

Ultra-realistic textures cast from natural stone, brick and historic cobblestones.

Ultima™ Concrete Technology

This proprietary manufacturing process creates pavers and walls with up to four times the strength of poured concrete.

Stones & Bundling	Unit	SqFt Per				Per Bundle		Soldier LnFt Per			Sailor LnFt per			Units Per			Lbs Per		
	Thickness	Bundle	Layer	Section	Stone	Layers	Sections	SqFt	Section	Bundle	SqFt	Section	Bundle	SqFt	Section	Bundle	Layer	Section	Bundle
Ayr Manufacturing																			
Standard	2¾" (7cm)	88.41	11.05	-	0.276	8	-	0.842	-	105.0	-	-	-	3.62	-	320	361	-	2,888

Notes: **Sold in full bundles only and is produced and sold on a required, refundable skid.** **Important:** A urethane rubber paver mat must be used to prevent scuffing. For permeable installations, Unilock recommends using Easy-Pro™ or granite chips for joint filler. For traditional applications, please refer to the Polymeric Sand Best Practices on page 54 and Important Notice on page 56. All measurements are nominal. Contact Unilock for more information.

Internal Use Only. TWH ON



PEPPERED GRANITE



COBALT GREY



Stones & Bundling	Unit	SqFt Per				Per Bundle		Soldier LnFt Per			Sailor LnFt per			Units Per			Lbs Per		
	Thickness	Bundle	Layer	Section	Stone	Layers	Sections	SqFt	Section	Bundle	SqFt	Section	Bundle	SqFt	Section	Bundle	Layer	Section	Bundle
Chicago Manufacturing																			
Random Bundle	-	97.53	12.19	-	-	8	-	-	-	-	-	-	-	-	-	304	398	-	3,186
Large Rectangle	2 3/4" (7cm)	-	-	-	0.427	-	-	-	-	-	-	-	-	2.34	-	88	-	-	-
Rectangle	2 3/4" (7cm)	-	-	-	0.322	-	-	-	-	-	-	-	-	3.11	-	88	-	-	-
Small Rectangle	2 3/4" (7cm)	-	-	-	0.245	-	-	-	-	-	-	-	-	4.08	-	128	-	-	-

Notes: **Sold in full bundles only and is produced and sold on a required, refundable skid..** All measurements are nominal. **Important: A urethane rubber paver mat must be used to prevent scuffing.** Please refer to the Polymeric Sand Best Practices on page 54 and Important Notice on page 56. Contact Unilock for information.

Internal Use Only. TRC CH



NATURAL



STANDARD
16 x 24 x 3 7/8"
40 x 60 x 8cm



Stones & Bundling	Unit	SqFt Per				Per Bundle		Soldier LnFt Per			Sailor LnFt per			Units Per			Lbs Per		
	Thickness	Bundle	Layer	Section	Stone	Layers	Sections	SqFt	Section	Bundle	SqFt	Section	Bundle	SqFt	Section	Bundle	Layer	Section	Bundle
Chicago Manufacturing																			
Standard	3 7/8" (8cm)	80.00	10.00	-	2.50	8	-	1.905	-	42.0	-	-	-	0.40	-	32	249	-	1,995

Notes: **Sold in full bundles only and is produced and sold on a required, refundable skid.** All measurements are nominal. Contact Unilock for more information.

Internal Use Only. TFS CH



MIDNIGHT SKY



SUMMER WHEAT



WINTER MARVEL



FRENCH GREY
NEW FOR 2018



HARVEST BROWN
NEW FOR 2018

ARTLINE SIZES AVAILABLE,
SEE PAGE 3



WINTER MARVEL



MIDNIGHT SKY



4 x 8 x 2 3/8"
10 x 20 x 6cm
NEW FOR 2018



LARGE RECTANGLE
21 x 14 x 2 3/8"
52.5 x 35 x 6cm



SQUARE
14 x 14 x 2 3/8"
35 x 35 x 6cm



SMALL RECTANGLE
7 x 14 x 2 3/8"
17.5 x 35 x 6cm

6cm Random Bundle
Individual units cannot
be sold separately



TECHNICAL ADVANTAGES

EasyClean™ Stain Resistance - CF 90

An integral surface protection that allows for easier cleanup of spills when they happen, and before a stain can develop.

ColorFusion™ Technology

A proprietary technology that disperses color randomly for a natural, granite-like appearance.

Stones & Bundling	Unit	SqFt Per				Per Bundle		Soldier LnFt Per			Sailor LnFt per			Units Per			Lbs Per		
	Thickness	Bundle	Layer	Section	Stone	Layers	Sections	SqFt	Section	Bundle	SqFt	Section	Bundle	SqFt	Section	Bundle	Layer	Section	Bundle
Georgetown Manufacturing																			
4" x 8"	2 3/8" (6cm)	106.11	11.79	-	0.218	9	-	-	-	162.0	-	-	-	4.58	-	486	322	-	2,900
Georgetown Manufacturing		94.20	10.47	-	1.308	9	-	-	-	69.1	-	-	-	0.76	-	72	287	-	2,584
New York Manufacturing		93.62	10.40																
Large Rectangle	2 3/8" (6cm)	-	-	-	2.093	-	-	1.772	-	21.3	-	-	-	0.48	-	18	-	-	-
Square	2 3/8" (6cm)	-	-	-	1.395	-	-	1.181	-	31.9	-	-	-	0.72	-	27	-	-	-
Small Rectangle	2 3/8" (6cm)	-	-	-	0.698	-	-	1.181	-	15.9	-	-	-	1.43	-	27	-	-	-

Notes: **6cm Random Bundle pavers are not suitable for vehicular applications. Sold in full bundles only and is produced and sold on a required, refundable skid. Important: A urethane rubber paver mat must be used to prevent scuffing.** Please refer to the Sealer and Polysand Best Practices on pages 54, and Important Notice on page 56. Unilock offers adjustable and stackable pedestal systems; please contact your Territory Manager for pricing and availability. All measurements are nominal.

Internal Use Only. UMB NY



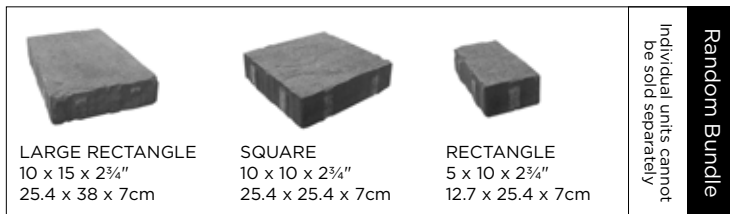
GRANITE



SIERRA



PUEBLO



RECTANGLE
5 x 10 x 2 3/4"
12.7 x 25.4 x 7cm

Stones & Bundling	Unit	SqFt Per				Per Bundle		Soldier LnFt Per			Sailor LnFt per			Units Per			Lbs Per		
	Thickness	Bundle	Layer	Section	Stone	Layers	Sections	SqFt	Section	Bundle	SqFt	Section	Bundle	SqFt	Section	Bundle	Layer	Section	Bundle
Chicago Manufacturing																			
Random Bundle	-	94.19	11.77	-	-	8	-	-	-	-	-	-	-	1.70	-	160	367	-	2,937
Large Rectangle	2 3/4" (7cm)	-	-	-	1.009	-	-	-	-	-	-	-	-	0.99	-	32	-	-	-
Square	2 3/4" (7cm)	-	-	-	0.673	-	-	-	-	-	-	-	-	1.49	-	56	-	-	-
Rectangle	2 3/4" (7cm)	-	-	-	0.336	-	-	-	-	-	-	-	-	2.97	-	72	-	-	-
5"x10"	2 3/4" (7cm)	94.19	11.77	-	0.336	8	-	-	-	-	-	-	-	2.97	-	280	360	-	2,884

Notes: **Sold in full bundles only and is produced and sold on a required, refundable skid. Important: A urethane rubber paver mat must be used to prevent scuffing.** All measurements are nominal. Contact Unilock for more information.

Internal Use Only. WPT CH



HONEY GOLD



IRON RIVER

TECHNICAL ADVANTAGES**Reala™ Surface Technology**

Ultra-realistic textures cast from natural stone, brick and historic cobblestones.



24 x 24 x 1 3/4"
60 x 60 x 4.5cm



18 x 24 x 1 3/4"
45 x 60 x 4.5cm



12 x 24 x 1 3/4"
30 x 60 x 4.5cm



Stones & Bundling	Unit	SqFt Per				Per Bundle		Soldier LnFt Per			Sailor LnFt per			Units Per			Lbs Per		
	Thickness	Bundle	Layer	Section	Stone	Layers	Sections	SqFt	Section	Bundle	SqFt	Section	Bundle	SqFt	Section	Bundle	Layer	Section	Bundle
Chicago Manufacturing																			
24" x 24"	1 3/4" (4.5cm)	72.00	-	-	4.000	-	-	-	-	-	-	-	-	0.25	-	18	-	-	1,353
18" x 24"	1 3/4" (4.5cm)	54.00	-	-	3.000	-	-	-	-	-	-	-	-	0.33	-	18	-	-	1,038
12" x 24"	1 3/4" (4.5cm)	36.00	-	-	2.000	-	-	-	-	-	-	-	-	0.50	-	18	-	-	700

Notes: **Sold in full bundles only and is produced and sold on a required, refundable skid. Important: Do not use a vibratory plate compactor for the final compaction. Product is not intended for vehicular applications.** Stones and coverages are designed to have up to 1/4" joint size. All measurements are nominal. Contact Unilock for more information.

Internal Use Only. YST CH



COFFEE CREEK



LIMESTONE



PRAIRIE



SANDSTONE



SIERRA



UNIVERSAL BASE UNIT
19" x 14" x 2"
48.2cm x 35.5cm x 5.5cm



STANDARD
4 x 8 x 12"
10 x 20 x 30cm



SMALL TAPERED UNIT
9 x 4 x 8"
22.9 x 10 x 20cm

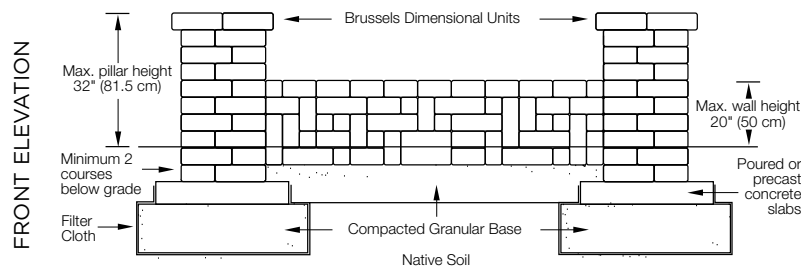
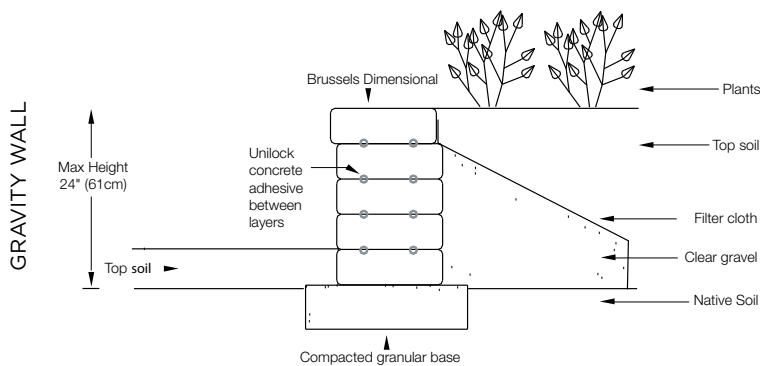
Small Tapered Units
are only sold in Coffee
Creek, Sandstone and
Sierra colors.



Stones & Bundling	Face Feet Per		Linear Feet Per		Units Per		Per Bundle		Lbs Per	
	Bundle	Unit	Bundle	Unit	Bundle	Face Feet	Layers	Sections	Unit	Bundle
Chicago Manufacturing										
Standard	32.00	0.333	63.36	0.660	96	3.00	6	4	28	2,688
Small Tapered	36.00	0.250	108.00	0.750	144	4.00	6	-	19	2,730
Universal Base Unit	99.46	-	85.5 / 63	-	54	-	9	-	46	2,502

Notes: Maximum height is 24" (under optimum conditions). *Based on 12" deep wall coverage = 21.4 sqft per bundle. Based on an 8" deep wall coverage = 32 sqft per bundle. Ledgerstone, Brussels XL or 6" x 12" Fullnose complement as a possible coping unit. **Small tapered units are sold in full bundles only.** All measurements are nominal. Contact Unilock for more information.

Internal Use Only. BDS CH



All joints must be adhered with Concrete Adhesive. Base preparation may vary according to soil and climate conditions.

Cross sections are examples and must not be used for construction.

SUNSET FIREPIT KITS

Available with or without grill in the following colors:

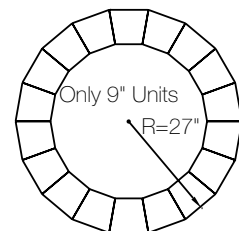
- Coffee Creek
- Sandstone
- Sierra



ROUND



SQUARE



To enlarge the radius for planters and walls, simply 'gap' the back to make the desire radius. (You will not see the gaps because they are against the backfill.) Be sure to use filter fabric between the wall and the backfill. (See Tech Guide for complete instructions.)

CUMBERLAND WALL®

Stocked at Aurora, Elkhorn & Tonganoxie



RIVER






SANDSTONE



SIERRA



 <p>6" LARGE UNIT 15 (12½) x 6 x 9" 38 (32) x 15 x 23cm</p>	 <p>6" MEDIUM UNIT 12½ (10) x 6 x 9" 32 (25) x 15 x 23cm</p>	 <p>6" SMALL UNIT 10 (7½) x 6 x 9" 25 (19) x 15 x 23cm</p>	<p>Individual units cannot be sold separately</p> <p>Random Bundle</p>
---	--	--	---



6" CORNER/PILLAR UNIT
12½ x 6 x 9"
32 x 15 x 23cm



UNIVERSAL BASE UNIT
19" x 14" x 2"
48.2cm x 35.5cm x 5.5cm

Stones & Bundling	Face Feet Per		Linear Feet Per		Units Per		Per Bundle		Lbs Per	
	Bundle	Unit	Bundle	Unit	Bundle	Face Feet	Layers	Sections	Unit	Bundle
Chicago Manufacturing										
6" Random Bundle	31.25	-	62.30	-	60	-	5	2	-	2,937
└ Large Unit	12.50	0.625	24.92	1.246	20	1.60	-	-	59	-
└ Medium Unit	10.42	0.521	20.98	1.049	20	1.92	-	-	49	-
└ Small Unit	8.34	0.417	16.40	0.820	20	2.40	-	-	39	-
Corner/Pillar Unit	18.76	0.521	-	0.96	36	-	3	-	54.5	1,964
Universal Base Unit	99.46	-	85.5 / 63	-	54	-	9	-	46	2,502

Notes: **Corner/Pillar bundles are non-sectionable, sold in full bundles only.** LedgeStone™ or Natural Stone provide coping possibilities. All measurements are nominal. Contact Unilock for more information.

Internal Use Only. CMB CH



NATURAL



STANDARD
72 x 12 x 24"
183 x 30 x 60cm
SPECIAL ORDER



CORNER 90°
60 x 12 x 24"
152 x 30 x 60cm
SPECIAL ORDER
(Right Corner Shown)



COPING
72 x 12 x 24"
183 x 30 x 60cm
SPECIAL ORDER



CLOSED-END COPING
72 x 12 x 24"
183 x 30 x 60cm
SPECIAL ORDER



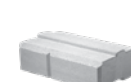
TIE-BACK
72 x 12 x 24"
183 x 30 x 60cm
SPECIAL ORDER



1/2 COPING
36 x 12 x 24"
91.5 x 30 x 60cm
SPECIAL ORDER



CORNER 45°
60 x 12 x 24"
152 x 30 x 60cm
SPECIAL ORDER
(Right Corner Shown)



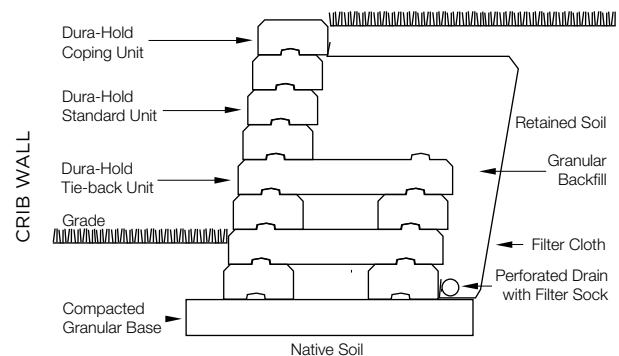
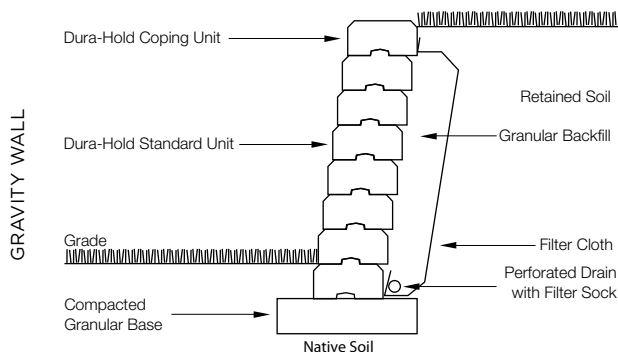
1/2 STANDARD
36 x 12 x 24"
91.5 x 30 x 60cm
SPECIAL ORDER



Stones & Bundling	Face Feet Per		Linear Feet Per		Units Per		Per Bundle		Lbs Per	
	Bundle	Unit	Bundle	Unit	Bundle	Face Feet	Layers	Sections	Unit	Bundle
Gormley Manufacturing										
Coping Closed End 72" *	-	6.024	-	6.024	-	0.17	-	-	1,560	-
Half Coping *	-	3.003	-	3.003	-	0.33	-	-	780	-
Corner 45° Right *	-	7.042	-	7.042	-	0.14	-	-	1,480	-
Corner 90° Right *	-	7.042	-	7.042	-	0.14	-	-	1,320	-
Coping 72" *	-	6.024	-	6.024	-	0.17	-	-	1,560	-
Wall Half *	-	3.003	-	3.003	-	0.33	-	-	800	-
Wall Standard *	-	6.024	-	6.024	-	0.17	-	-	1,680	-
Wall Tieback *	-	2.000	-	2.000	-	0.50	-	-	1,660	-

Notes: ***Special Order - Lead time is required**, minimum quantities apply. **Sold in full bundles only.** Closed-end coping units are closed on both ends so that they may be used as left or right units. Tie-back units are reinforced with steel. 1/2 Standard units are slightly tapered and can be used to create a 45 foot radius. Refer to terms and conditions for placement rates. Unilock, through Risi Stone® Systems International, can provide preliminary site engineering for most commercial projects. Soils information, site drawings, and loading requirements are some of the information details required in order to provide this preliminary site engineering. All measurements are nominal. Contact Unilock for more information.

Internal Use Only. DH1 ON



Cross sections are examples and must not be used for construction.



GRANITE
available in 3" & 6"
NEW FOR 2018



RIVER
available in 3" & 6"



SIERRA
available in 3" & 6"



COPING
12 1/2 (9 1/2) x 3 x 12"
32 (24) x 7.5 x 30cm



FIELDSTONE
available in 6" only



COFFEE CREEK
available in 6" Only



SANDSTONE
available in 6" only



UNIVERSAL BASE UNIT
19" x 14" x 2"
48.2cm x 35.5cm x 5.5cm
See page 30 for
packaging information.



3" CORNER
12 1/2 x 3 x 9"
32 x 7.5 x 23cm



6" CORNER
12 1/2 x 6 x 9"
32 x 15 x 23cm



6" LARGE UNIT
15 (12 1/2) x 6 x 9"
38 (32) x 15 x 23cm



6" MEDIUM UNIT
12 1/2 (10) x 6 x 9"
32 (25) x 15 x 23cm



6" SMALL UNIT
10 (7 1/2) x 6 x 9"
25 (19) x 15 x 23cm

Individual units cannot
be sold separately
6" Random Bundle



3" LARGE UNIT
15 (12 1/2) x 3 x 9"
38 (32) x 7.5 x 23cm



3" MEDIUM UNIT
12 1/2 (10) x 3 x 9"
32 (25) x 7.5 x 23cm



3" SMALL UNIT
10 (7 1/2) x 3 x 9"
25 (19) x 7.5 x 23cm

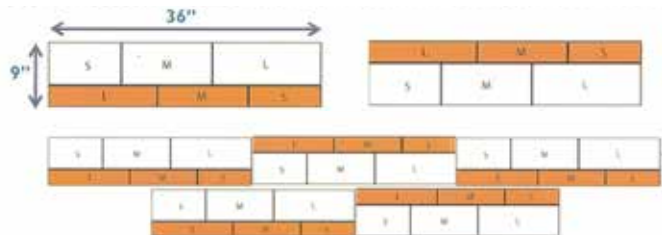
Individual units cannot
be sold separately
3" Random Bundle

Stones & Bundling	Face Feet Per		Linear Feet Per		Units Per		Per Bundle		Lbs Per	
	Bundle	Unit	Bundle	Unit	Bundle	Face Feet	Layers	Sections	Unit	Bundle
Chicago Manufacturing										
Coping 12"	18.75	0.260	66.00	0.917	72	3.84	8	3	33	2,392
6" Corner	20.83	0.521	41.60	1.040	40	1.92	5	4	54	2,179
3" Corner	18.75	0.293	62.64	0.979	64	3.41	8	4	29	1,828
6" Random Bundle	31.25	-	62.30	-	60	-	5	4	-	2,926
Large Unit	12.50	0.625	24.92	1.246	20	1.60	-	-	59	-
Medium Unit	10.42	0.521	20.98	1.049	20	1.92	-	-	49	-
Small Unit	8.34	0.417	16.40	0.820	20	2.40	-	-	39	-
3" Random Bundle	25.12	-	99.68	-	96	-	8	4	-	2,209
Large Unit	10.02	0.313	39.87	1.246	32	3.19	-	-	29.5	-
Medium Unit	8.32	0.260	33.57	1.049	32	3.85	-	-	20	-
Small Unit	6.66	0.208	26.24	0.820	32	4.80	-	-	19.5	-

Notes: 3" and 6" random wall bundles have convertible large units that can be used for corners or ending seat walls. End caps not sold separately. Ledgerstone®, Olde Quarry Coping, Brussels Block® XL, Brussels Fullnose® or 6" x 12" Fullnose complement as a possible coping. All measurements are nominal. Contact Unilock for more information.

Internal Use Only, EWL CH

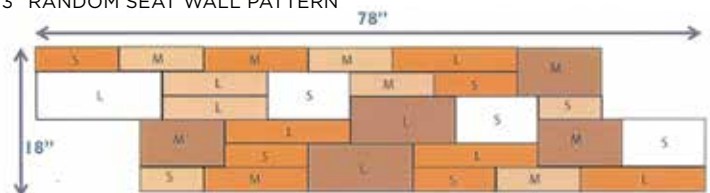
RETAINING WALL PATTERNS



Minimum Outside Radius = 48"
Maximum height for vertical installation - 21"
(Under optimum conditions)

This pattern is a 66% mix of 6" and 33% of 3".

6" & 3" RANDOM SEAT WALL PATTERN



For more information please consult the
Estate Wall installation booklet.



GRANITE BLEND



SANDALWOOD



SIERRA



PILLAR UNIT
12 x 4 x 8"
30 x 10 x 20cm



LEDGESTONE PILLAR CAP
24 x 24 x 4"
61 x 61 x 10cm



UNIVERSAL BASE UNIT
19 x 14 x 2"
48.2cm x 35.5cm x 5.5cm



XL RECTANGLE
24 x 4 x 8"
60 x 10 x 20cm



LARGE RECTANGLE
20 x 4 x 8"
50 x 10 x 20cm



RECTANGLE
16 x 4 x 8"
40 x 10 x 20cm



SMALL RECTANGLE
12 x 4 x 8"
30 x 10 x 20cm

Random Bundle
Individual units cannot
be sold separately



Stones & Bundling	Face Feet Per		Linear Feet Per		Units Per		Per Bundle		Lbs Per	
	Bundle	Unit	Bundle	Unit	Bundle	Face Feet	Layers	Sections	Unit	Bundle
Chicago Manufacturing										
Random Wall Bundle	31.91	-	94.46	-	63	-	3	-	-	2,845
XL Rectangle	11.95	0.664	35.42	1.968	18	1.51	-	-	-	-
Large Rectangle	8.31	0.554	24.60	1.640	15	1.81	-	-	-	-
Rectangle	6.66	0.444	19.68	1.312	15	2.25	-	-	-	-
Small Rectangle	4.99	0.333	14.76	0.984	15	3.01	-	-	-	-
Ledgestone Pillar Cap	-	-	-	-	5	-	-	-	159	795
Universal Base Unit	99.46	-	85.5 / 63	-	54	-	9	-	47	2,502
Pillar Unit	49.95 29.97	0.555 0.333	-	-	90	1.80 3.00	3	-	28	2,525

Notes: **Sold in full bundles only and is produced and sold on a required, refundable skid.** Spacing strips are shipped with random wall bundles to create even spacing between units. Ledgestone™, Unilock Natural Stone or 6"x12" Fullnose complement as possible coping options. All measurements are nominal. Contact Unilock for more information.

Internal Use Only. LDS CH



COFFEE CREEK



RIVER



SANDSTONE



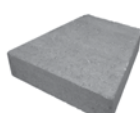
SIERRA



FIELDSTONE



CORNER
4½" x 9" x 12"
11 x 23 x 30cm



COPING UNIT
12 (9) x 3 x 12"
30.5 (23) x 7.5 x 30.5cm



UNIVERSAL BASE UNIT
19" x 14" x 2"
48.2cm x 35.5cm x 5.5cm
See page 30 for
packaging information



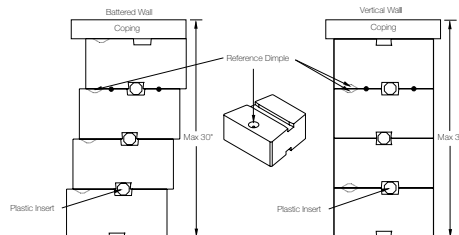
			Wall Bundle Individual units cannot be sold separately
15" UNIT 15 (12) x 4½" x 9" 38 (30.5) x 11.5 x 23cm	12" UNIT 12 (9) x 4½" x 9" 30.5 (15) x 11.5 x 23cm	9" UNIT 9 (6) x 4½" x 9" 23 (15) x 11.5 x 23cm	

Stones & Bundling	Face Feet Per		Linear Feet Per		Units Per		Per Bundle		Lbs Per	
	Bundle	Unit	Bundle	Unit	Bundle	Face Feet	Layers	Sections	Unit	Bundle
Eikhorn Manufacturing										
Coping Unit	24.00	0.250	84.00	1.000	96	4.00	8	4	32	3,039
Corner Unit	30.89	0.386	82.40	1.030	80	2.59	5	4	39	3,150
Wall Bundle	33.75	-	90.00	-	90	-	6	5	-	3,125
15" Unit	14.07	0.469	37.38	1.246	30	2.13	-	-	45	-
12" Unit	11.25	0.375	30.00	1.000	30	2.67	-	-	35	-
9" Unit	8.43	0.281	22.62	0.754	30	3.56	-	-	24	-

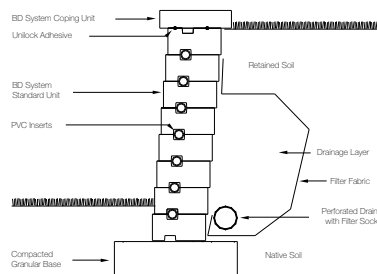
Notes: Structural retaining walls greater than 2' high require professional engineering. Connector units provided with every bundle upon request. Use plastic connectors on set-back walls. Wall Bundle includes 32 End Units per bundle - Not sold separately. Ledgestone™, Olde Quarry Coping, Brussels Block™ XL, Brussels Fullnose™ or 6" x 12" Fullnose complement as a possible coping. All measurements are nominal. Contact Unilock for more information.

Internal Use Only. OQY CH

SET BACK &
VERTICAL WALL

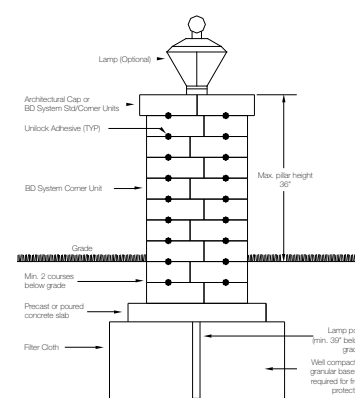
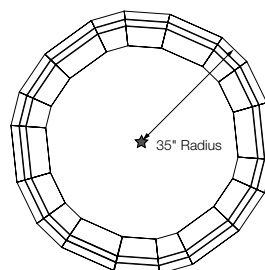


GRAVITY WALL



**Maximum height
for vertical
Installation:
27-31.5"**
(Under optimum
conditions)

Quarry Wall has a
set back of ¼" per
course.



Cross sections are examples and must
not be used for construction.

OLDE QUARRY RADIUS CHART

Radius achieved using only the tapered units from a "random bundle"							
Radius (inches)	35"	27"	35"	47"	32"	37"	42"
Unit sequence	9", 12", 15"	only 9" units	only 12" units	only 15" units	9", 12" etc.	9", 15" etc.	12", 15" etc.
	uses all units in bundle	Note: These sequences will have left over units. Plan to use the left over units in other parts of the project.					



NEVADA



SIERRA



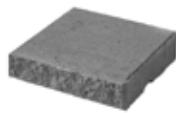
GRANITE
Available in Coping,
Corner & XL Wall
NEW FOR 2018



TAPERED
8 x 6 x 12"
20 x 15 x 30cm



CORNER
12 x 6 x 8"
30 x 15 x 20cm



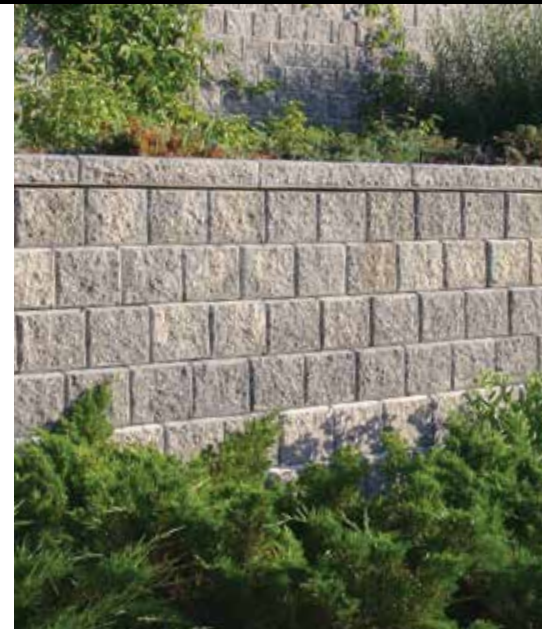
12" COPING
12 x 3 x 12"
30 x 7.5 x 30cm



XL WALL
16 x 6 x 12"
40 x 15 x 30cm



UNIVERSAL BASE UNIT
19" x 14" x 2"
48.2cm x 35.5cm x 5.5cm

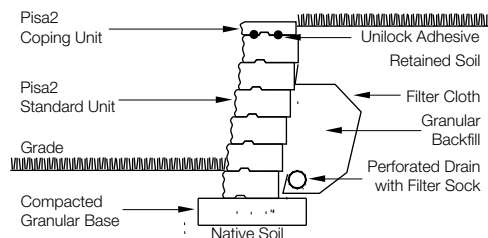


Stones & Bundling	Face Feet Per		Linear Feet Per		Dbl Units Per		Per Bundle		Lbs Per	
	Bundle	Dbl Unit	Bundle	Dbl Unit	Bundle	Face Feet	Layers	Sections	Dbl Unit	Bundle
Chicago Manufacturing										
Tapered	20.00	0.667	40.00	1.333	30	1.50	3	2	80	2,393
Corner Unit	30.00	1.667	-	-	18	0.60	3	6	112	2,008
12" Coping	21.00	0.500	84.00	2.000	42	2.00	7	2	68	2,875
XL Wall*	21.33	0.667	42.67	1.333	32	1.50	4	-	77	2,501
Universal Base Unit *	99.46	-	-	85.5 / 63	54	-	9	-	46	2,502

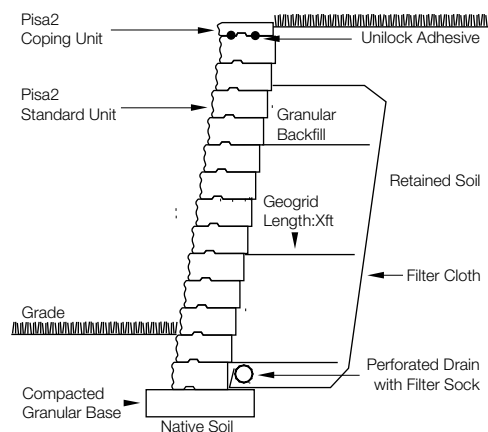
Notes: * **Universal Base & XL Wall units are single units and are sold in full bundles only and are produced and sold on a required, refundable skid.** When purchased by the full bundle, **Corner Units are produced and sold on a required, refundable skid.** 12" Coping bundle has 16 units of closed-end coping (8 left and 8 right). Closed-end 12" coping not sold separately. Maximum height - 36" (under optimum conditions). Higher walls can be achieved using geogrid reinforcement. The set back on Pisa2 wall is 3/4" every course or 1 1/2" every 2 courses. Retaining wall engineering software is also available free of charge at www.unilock.com. Walls greater than 4' in height require professional engineering. Tapered Units allow for a minimum 5' Radius. All measurements are nominal. Contact Unilock for more information.

Internal Use Only. PS2 CH

GRAVITY WALL



GEOGRID REINFORCED



Cross sections are examples and must not be used for construction.

RIVERCREST® WALL

Stocked at Aurora, Elkhorn & Tonganoxie



COASTAL SLATE



BUFF

TECHNICAL ADVANTAGES

Reala™ Surface Technology

Ultra-realistic textures cast from natural stone, brick and historic cobblestones.



JUMPER CORNER UNIT
12 x 9-10 x 4½"
31 x 23-25 x 11.4cm



LONG CORNER UNIT
17.7 x 9-10 x 2¼"
45 x 23-25 x 6cm



SHORT CORNER UNIT
14.7 x 9-10 x 2¼"
37.5 x 23-25 x 6cm

Individual units cannot be sold separately

Corner Bundle

RAPID PILLAR SYSTEM



STANDARD UNIT 1
8 x 9-10 x 2¼"
20 x 23-25 x 6cm



STANDARD UNIT 2
12 x 9-10 x 2¼"
31 x 23-25 x 6cm



STANDARD UNIT 3
12 x 9-10 x 2¼"
31 x 23-25 x 6cm



STANDARD UNIT 4
17 x 9-10 x 2¼"
42.5 x 23-25 x 6cm

Individual units cannot be sold separately

Standard Bundle



PILLAR UNIT
20" x 20" x 4½"
50cm x 50cm x 11.4cm



JUMPER UNIT 1
8 x 9-10 x 4½"
20 x 23-25 x 11.4cm



JUMPER UNIT 2
12 x 9-10 x 4½"
31 x 23-25 x 11.4cm



JUMPER UNIT 3
12 x 9-10 x 4½"
31 x 23-25 x 11.4cm



JUMPER UNIT 4
17 x 9-10 x 4½"
42.5 x 23-25 x 11.4cm

Individual units cannot be sold separately

Jumper Bundle

**RIVERCREST
FIRE PIT KIT**
See page 38 for
more information.

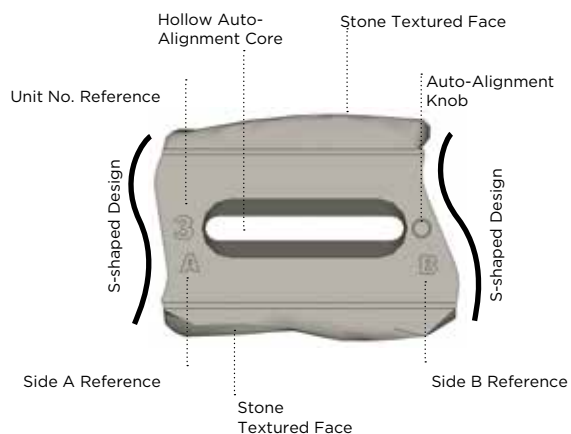


UNIVERSAL BASE UNIT
19" x 14" x 2"
48.2cm x 35.5cm x 5.5cm
See page 30 for
packaging information

Stones & Bundling	Face Feet Per		Linear Feet Per		Units Per		Per Bundle		Lbs Per	
	Bundle	Unit	Bundle	Unit	Bundle	Face Feet	Layers	Sections	Unit	Bundle
Ayr Manufacturing										
Jumper Corner Unit	21.60	0.675	57.28	1.790	32	1.48	-	-	40	1,280
Corner Bundle	16.21	-	54.12	-	40	-	4	-	-	1,173
Long Corner Unit	8.6	0.43	29.52	1.470	20	-	-	-	31.57	-
Short Corner Unit	7.6	0.38	24.60	1.230	20	-	-	-	27.07	-
Pillar Unit Bundle	-	-	-	-	8	-	-	-	125	1,000
Wall Bundle	24.30	-	130.69	-	128	-	8	-	-	1,990
Standard Unit 1	3.93	0.123	20.99	0.656	32	8.15	-	-	-	-
Standard Unit 2	6.09	0.190	32.54	1.017	32	5.26	-	-	-	-
Standard Unit 3	6.09	0.190	32.54	1.017	32	5.26	-	-	-	-
Standard Unit 4	8.20	0.256	44.61	1.394	32	3.90	-	-	-	-
Jumper Bundle	24.30	-	65.34	-	64	-	4	-	-	2,720
Jumper Unit 1	3.93	0.245	10.50	0.656	16	4.07	-	-	-	-
Jumper Unit 2	6.09	0.380	16.27	1.017	16	2.63	-	-	-	-
Jumper Unit 3	6.09	0.380	16.27	1.017	16	2.63	-	-	-	-
Jumper Unit 4	8.20	0.513	22.30	1.394	16	1.95	-	-	-	-

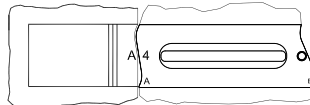
Notes: **Sold in full bundles only and is produced and sold on a required, refundable skid.** Rivercrest is recommended for walls under 2ft. Ideal for straight or curved walls, seat walls, pillars, tree rings, planters, firepits and grill islands. Integrated connectors require no pins or clips. Minimum radius using equal amounts of each unit is 1.25m / 4.1ft. Using only unit 1 & 3 a 1.055m / 3.5ft radius can be achieved. For more information, please consult the Rivercrest installation booklet. Retaining wall engineering software is also available free of charge at www.unilock.com. All measurements are nominal. Contact Unilock for more information. Unilock recommends using Ledgestone™ or Natural Stone coping for a complete and refined look.

Internal Use Only. RVC ON



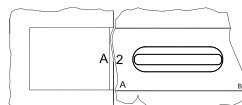
Starting a Wall

Course 1



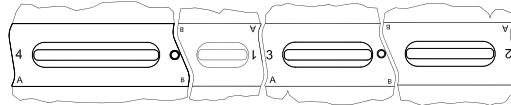
Long Corner Unit 4

Course 2

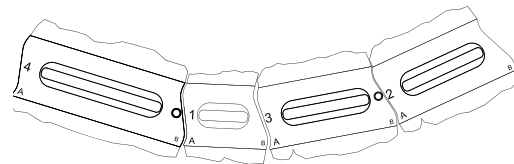


Short Corner Unit 2

Straight Wall - Align A-A / B-B



Curved Wall - Align A-B / B-A

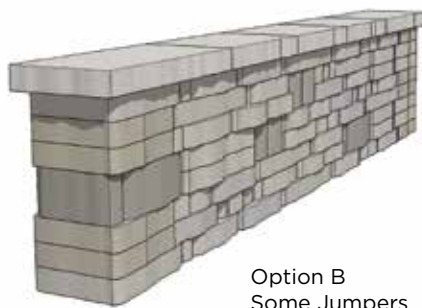


DESIGN STYLE

To accurately determine the number of standard and jumper units you will require, start by selecting an aesthetic option.



Option A
No Jumpers



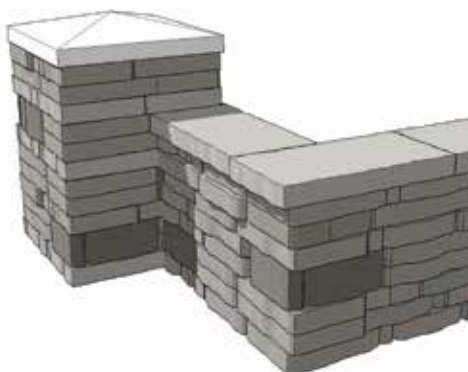
Option B
Some Jumpers



Option C
Many Jumpers

JUMPER UNITS

In addition to being used to enhance sections of wall, jumper units can also be used in a variety of different ways within the Rivercrest Wall system. The Jumper Unit #2 has faces on three sides making it perfect for incorporating into pillars and corners. The unit can also be used when starting and ending seat walls.



For more information please consult the Rivercrest® installation booklet.



LOOK INSIDE!

U-Cara fascia panels hang easily on the patented Sure Track™ backer block.



U-Cara™ Fascia panels can be placed anywhere along the Sure Track Backer Block, allowing for a variety of patterns, color and texture combinations not possible with other systems.



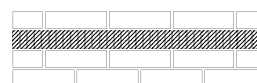
1/2 Running Bond



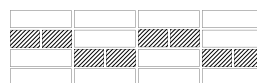
1/2 Running Bond with Linear Accents



1/2 Running Bond with Random Accents



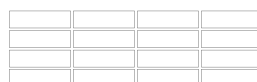
1/2 Running Bond with Paver Accents



Mixed Bond



1/3 Running Bond



Stacked Bond



Stacked Bond with Accents



The U-Cara Multi-Face Wall System represents a revolution in wall design.

This patented system, exclusive to Unilock®, is comprised of two basic components:

- | Sure Track™ backer blocks provide dimensionally accurate structure
- | U-Cara fascia panels provide unlimited design options



GRANITE FUSION
PITCHED FACE



BAVARIAN
PITCHED FACE



OPAL
PITCHED FACE



GRANITE FUSION
SMOOTH FACE



BAVARIAN
SMOOTH FACE



OPAL
SMOOTH FACE



28.5 PILLAR CAP
28 1/2" x 28 1/2" x 4"
72 x 72 x 10cm
Buff & Grey Only



SURE TRACK
STANDARD BACKER
6" x 8" x 6"
15cm x 20cm x 15cm



SURE TRACK
LARGE BACKER
6" x 7" x 12"
15cm x 17.5cm x 30cm



UNIVERSAL
BASE UNIT
19" x 14" x 2"
48.2cm x 35.5cm x 5.5cm



SURE TRACK
CORNER INSERT
L = 2" / 5cm



STANDARD FASCIA
HALF PANEL
6" x 9 1/4" x 2 3/8"
15cm x 23.3cm x 6cm
PITCHED & SMOOTH



CLOSED-END FASCIA
PANEL
6" x 21" x 2 3/8"
15cm x 53cm x 6cm
PITCHED & SMOOTH



STANDARD FASCIA
PANEL
6" x 18 1/2" x 2 3/8"
15cm x 46.6cm x 6cm
PITCHED & SMOOTH



UNIVERSAL
COPING
19" x 14" x 2 3/4"
48.2cm x 35.5cm x 7cm
Buff & Grey Only

CORNER BUNDLE

Stones & Bundling	Face Feet Per		Linear Feet Per		Units Per		Per Bundle		Lbs Per	
	Bundle	Unit	Bundle	Bundle Soldier/Sailor	Bundle	Face Feet	Layers	Sections	Unit	Bundle
Stocked at Aurora, Elkhorn & Tonganoxie										
Sure Track Standard Backer	33.91	0.323	-	-	105	-	3	-	23	2,458
Sure Track Large Backer *	15.85	0.283	-	-	56	-	4	-	36 36.43	2,405 2,040
Standard Fascia Panel (Smooth)	61.52	0.732	-	-	84	-	6	-	18	1,648
Standard Fascia Panel (Pitched)	61.52	0.732	-	-	84	-	6	-	21	1,924
Corner Bundle (Smooth)	50.23	-	-	-	-	-	6	-	-	1,241
└ Closed-End Fascia Panel	34.98	0.833	-	-	42	-	-	-	21	865
└ Half Fascia Panel	15.25	0.363	-	-	42	-	-	-	9	375
Corner Bundle (Pitched)	50.23	-	-	-	-	-	6	-	-	1,416
└ Closed-End Fascia Panel	34.98	0.833	-	-	42	-	-	-	24	993
└ Half Fascia Panel	15.25	0.363	-	-	42	-	-	-	10	423
Universal Copping Bundle	17.43	0.363	76	-	48	2.75	6	-	60	2,864
Universal Base Unit	99.46	-	-	85.5 / 63	54	-	9	-	46	2,502
28.5 Pillar Cap	-	-	-	-	5	-	-	-	302	1,510

Notes: **Sold in full bundles. Produced and sold on required refundable skids.**

* Sure Track Large Backers, when used as corners or in a pillar application, can achieve 42 face feet per bundle or .757 ff/unit.

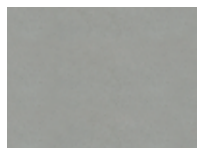
Internal Use Only. UCA CH

LEDGESTONE™ PILLAR CAPS, STEPS & COPING

Stocked at Aurora, Elkhorn & Tonganoxie



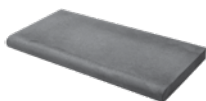
BUFF



GREY



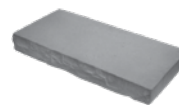
24" PILLAR CAP
24 x 24 x 4"
61 x 61 x 10cm



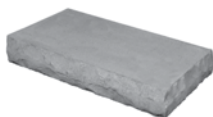
FULLNOSE COPING
12 x 24 x 1 3/4"
30.5 x 61 x 4.5cm



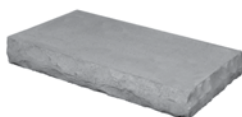
CLOSED-END COPING
12 x 24 x 3"
30.5 x 61 x 7.5cm



COPING UNIT
12 x 24 x 3"
30.5 x 61 x 7.5cm



36" LEDGESTONE STEP
36 x 18 x 6"
91.4 x 45.7 x 15.2cm



48" LEDGESTONE STEP
48 x 24 x 6"
122 x 61 x 15.2cm



72" LEDGESTONE STEP
72 x 24 x 6"
183 x 61 x 15.2cm

TECHNICAL ADVANTAGES

Reala™ Surface Technology

Ultra-realistic textures cast from natural stone, brick and historic cobblestones.

Stones & Bundling	Face Feet Per		Linear Feet Per		Units Per		Per Bundle		Lbs Per	
	Bundle	Unit	Bundle	Unit	Bundle	Face Feet	Layers	Sections	Unit	Bundle
Chicago Manufacturing										
Pillar Cap	-	-	-	-	5	-	-	-	159	795
Fullnose Coping	-	-	32.00	2.00	16	-	-	-	42	667
Closed-End Coping	-	-	24.00	2.00	12	-	-	-	66	796
Coping	-	-	24.00	2.00	12	-	-	-	64	772
Manufactured in Canada - Stocked in Buff & Grey only										
Ledgestone Steps 36"	-	-	9.00	3.00	3	-	-	-	327	982
Ledgestone Steps 48"	-	-	12.00	4.00	3	-	-	-	574	1,721
Ledgestone Steps 72"	-	-	18.00	6.00	3	-	-	-	860	2,581

Notes: **Sold in full bundles only and is produced and sold on a required, refundable skid.** Coping is rock faced on the front and the back; Closed-end coping and steps are rock faced on three sides. See page 45 for caulk information. **28 1/2" Pillar Caps are also available and are referred to as Lineo Pillar Cap, see page 28 for packaging information.** All measurements are nominal. Contact Unilock for more information.

Internal Use Only. LDG CH

UNIVERSAL COPING

Stocked at Aurora, Elkhorn & Tonganoxie

NEW FOR 2018



BUFF



GREY



UNIVERSAL COPING
19" x 14" x 2 3/4"
48.2cm x 35.5cm x 7cm

Stones & Bundling	Face Feet Per		Linear Feet Per		Units Per		Per Bundle		Lbs Per	
	Bundle	Unit	Bundle	Unit	Bundle	Face Feet	Layers	Sections	Unit	Bundle
Universal Coping	17.43	0.363	76	1.58	48	2.75	6	-	59.67	2864

Notes: **Sold in full bundles only. 2 End Coping Units per Layer (1 Left & 1 Right)**

BRUSSELS FULLNOSE™

Stocked at Aurora, Elkhorn & Tonganoxie



COFFEE CREEK



LIMESTONE



SANDSTONE



SIERRA



STANDARD
6 x 12 x 2³/₄"
15 x 30.5 x 7cm



Stones & Bundling	Unit	SqFt Per				Per Bundle		Soldier LnFt Per			Sailor LnFt per			Units Per			Lbs Per		
	Thickness	Bundle	Layer	Section	Stone	Layers	Sections	SqFt	Section	Bundle	SqFt	Section	Bundle	SqFt	Section	Bundle	Layer	Section	Bundle
Chicago Manufacturing																			
Standard	2 ³ / ₄ " (7cm)	96.00	12	24.00	0.50	8	4	1.016	24	94.5	-	-	-	2.00	48	192	364	728	2,913

Notes: Can be used for wall coping, step treads, mantels for outdoor fireplaces and other detailed edge applications, or adhered to pool edge using Concrete Adhesive, or with mortar. Always observe proper construction techniques when adhering pavers to a surface. Consult your local pool contractors for installation specifics. All measurements are nominal. Contact Unilock for more information.

Internal Use Only. BFN CH

6" X 12" FULLNOSE

Stocked at Aurora, Elkhorn & Tonganoxie



COFFEE CREEK



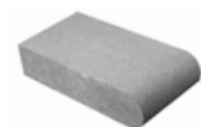
LIMESTONE



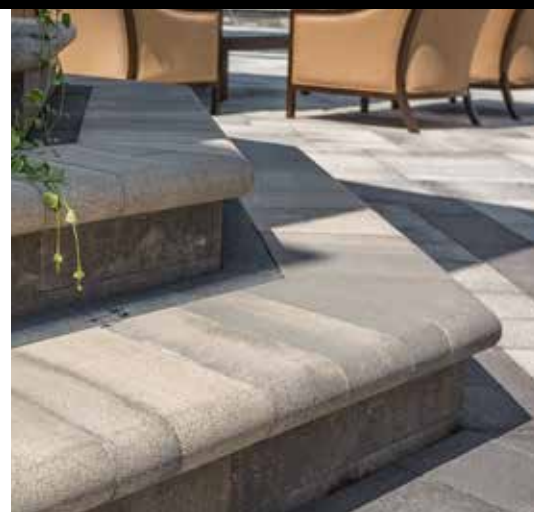
SANDSTONE



SIERRA



6" x 12" FULLNOSE
6 x 12 x 2³/₄"
15 x 30.5 x 7cm



Stones & Bundling	Unit	SqFt Per				Per Bundle		Soldier LnFt Per			Sailor LnFt per			Units Per			Lbs Per		
	Thickness	Bundle	Layer	Section	Stone	Layers	Sections	SqFt	Section	Bundle	SqFt	Section	Bundle	SqFt	Section	Bundle	Layer	Section	Bundle
Chicago Manufacturing																			
Fullnose	2 ³ / ₄ " (7cm)	96.00	24.00	24.00	0.500	4	4	1.016	23.6	94.5	-	-	-	2.00	48	192	745	745	2,982

Notes: Can be used for wall coping, step treads, mantels for outdoor fireplaces and other detailed edge applications, or adhered to pool edge using Concrete Adhesive, or with mortar. Always observe proper construction techniques when adhering pavers to a surface. Consult your local pool contractors for installation specifics. All measurements are nominal. Contact Unilock for more information.

Internal Use Only. BFN CH



NEVADA



SIERRA

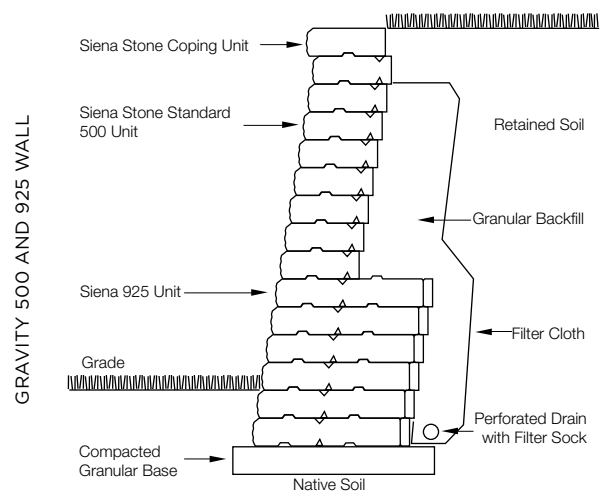
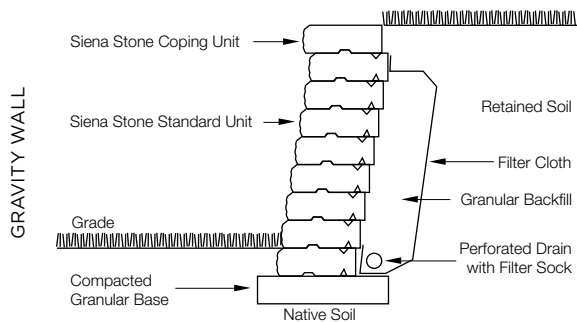


COPING
39 x 7 1/4 x 20"
100 x 18.5 x 50cm

Stones & Bundling	Face Feet Per		Linear Feet Per		Units Per		Per Bundle		Lbs Per	
	Bundle	Unit	Bundle	Unit	Bundle	Face Feet	Layers	Sections	Unit	Bundle
Chicago Manufacturing										
Standard 925 *	6.00	2.000	9.75	3.250	3	0.50	-	-	872	2,617
Standard 500 *	12.00	2.000	19.50	3.250	6	0.50	-	-	463	2,778
Coping	12.00	2.000	19.50	3.250	6	0.50	-	-	459	2,756
Closed- End Coping *	12.00	2.000	19.50	3.250	6	0.50	-	-	459	2,756
Corner 90° *	17.19	2.865	-	-	6	0.35	-	-	477	2,862

Notes: * **Special Order - Lead time is required, minimum quantities apply. All Special Order items are sold in full bundles only.** Coping units can be used to construct steps. Retaining wall engineering software is also available free of charge at www.unilock.com. All measurements are nominal. Contact Unilock for more information.

Internal Use Only. SST CH



Cross sections are examples, and must not be used for construction.

FIRE PIT KITS

Stocked at Aurora, Elkhorn, Marengo & Tonganoxie

Add instant charm and appeal to your backyard with a welcoming fire pit from Unilock. Each fire pit is pre-assembled in order to provide you with the easiest installation, with a variety of stone options to match your existing patio. Whether you are building a new patio, or adding to an existing one, your fire pit will become the ultimate gathering spot.

SUNSET FIRE PIT KIT



This fire pit kit uses Brussels Dimensional Stone® (small tapered units).



COFFEE CREEK



SANDSTONE



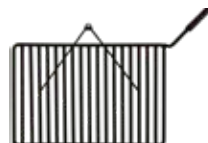
SIERRA

SUNSET FIRE PIT KIT	Square	Round
Coffee Creek	RS-CON038	RS-CON032
Coffee Creek w/ Grill	RS-CON041	RS-CON035
Sandstone	RS-CON037	RS-CON031
Sandstone w/ Grill	RS-CON040	RS-CON034
Sierra	RS-CON036	RS-CON030
Sierra w/ Grill	RS-CON039	RS-CON033

SQUARE



ROUND



FIRE PIT GRILL

This *optional* fire pit grill fits securely into both the round or square firepit designs.

RIVERCREST® FIRE PIT KIT



This fire pit kit is built with the Rivercrest Wall.



COASTAL SLATE
RS-CON063



BUFF
RS-CON061



FIRE PIT GRILL

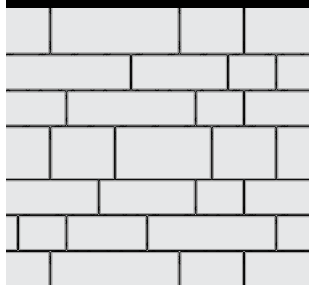
Fire pit grill is included and fits securely into the firepit.

Stones & Bundling	Units per Course	Units per Pallet	Diameter Outside of Stone	Diameter Inside of Stone	Diameter Pit Insert	Lbs./ Pallet	Kits / Pallet
Sunset Fire Pit - Square	16	48	56"	40"	38"	1,525	1
Sunset Fire Pit - Round	18	54	52"	36"	34"	1,125	1
Rivercrest Fire Pit Kit	4	12	54"	35"	34.5"	1,512	1

Notes: All measurements are nominal. Add 20 lbs. to weight when ordering grill unit for Sunset Fire Pits Contact Unilock for more information.

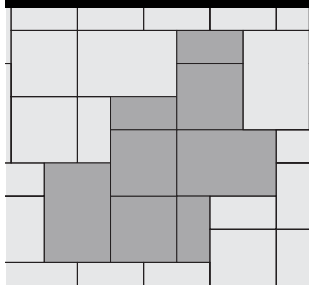
LAYING PATTERNS

ARTLINE™

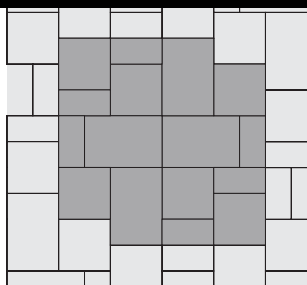


Artline A - 100% Random

BEACON HILL™ FLAGSTONE/BRISTOL VALLEY®

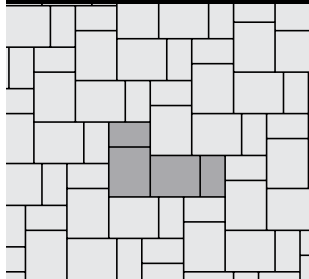


Beacon Hill Flagstone/Bristol Valley A -
40% Lg Rect, 40% Sq, 20% Sm Rect.

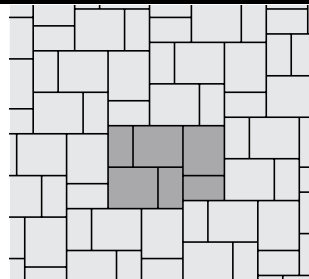


Beacon Hill Flagstone/Bristol Valley B -
40% Lg Rect, 40% Sq, 20% Sm Rect.

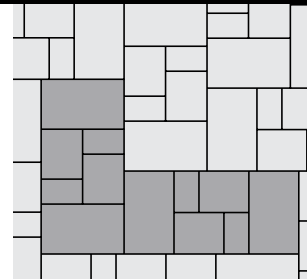
BRUSSELS BLOCK® / BRUSSELS PREMIER™



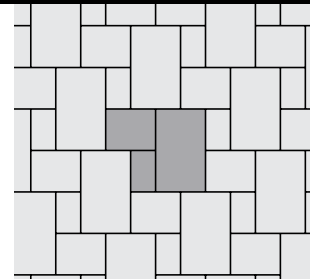
Brussels P - 67% Standard, 33% Half



Brussels O - 67% Standard, 33% Half

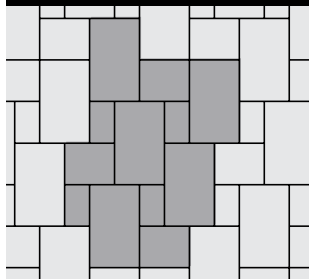


Brussels X - 57% XL, 29% Standard,
14% Half

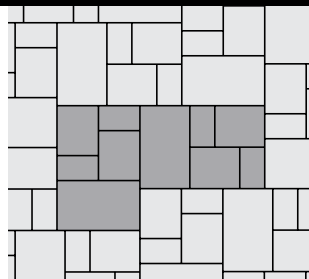


Brussels Y - 57% XL, 29% Standard,
14% Half

BRUSSELS BLOCK® / BRUSSELS PREMIER™

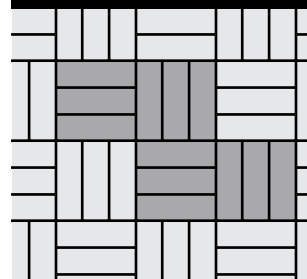


Brussels Z - 67% XL, 20% Standard,
13% Half

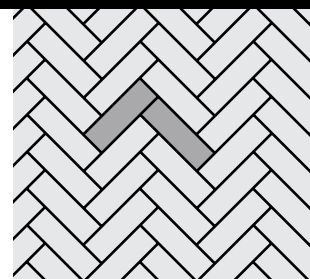


Brussels AF - 40% XL, 40% Standard,
20% Half

COPTHORNE®

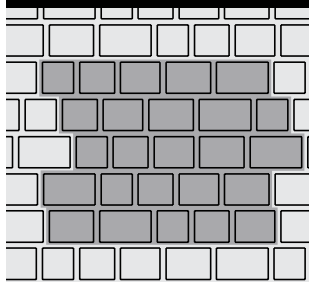


Copthorne A - 100% Standard



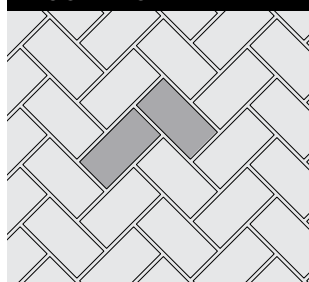
Copthorne B - 100% Standard

COURTSTONE®



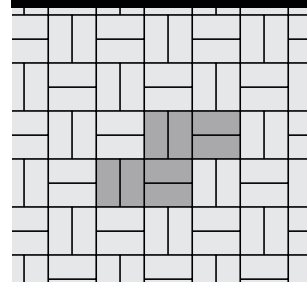
Courtstone A - 16% Sq., 18% Sm. Rec.,
19% Rec., 22% Lg. Rec., 25% XL Rec.

ECO-PRIORA™

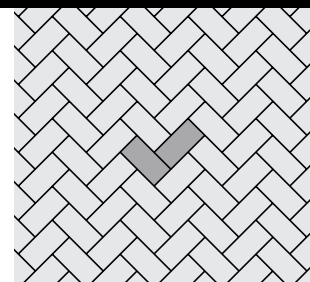


Eco-Priora E - 100% Rectangle

HOLLANDSTONE™ & HOLLAND™ PREMIER

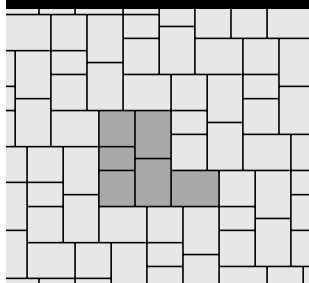


Hollandstone D - 100% 4"x8"



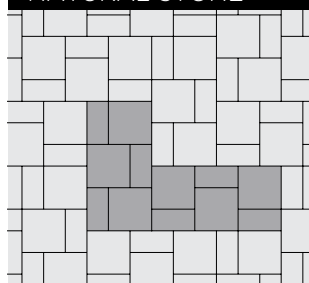
Hollandstone C - 100% 4"x8"

IL CAMPO®

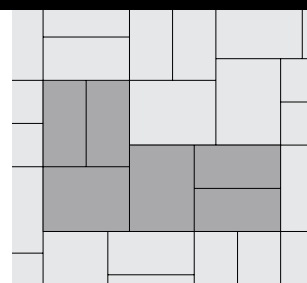


Il Campo H - 60% 6"x8", 30% 6"x6",
10% 4"x6"

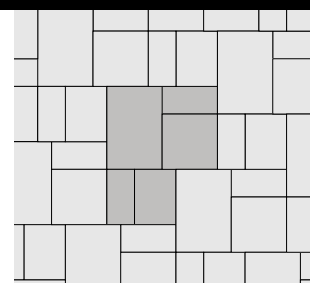
NATURAL STONE



Natural Stone C - 67% 24" x 24",
33% 12" x 24"

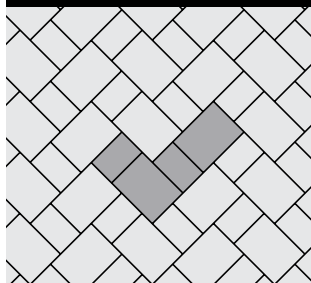


Natural Stone D - 57% 12" x 24",
43% 18" x 24"



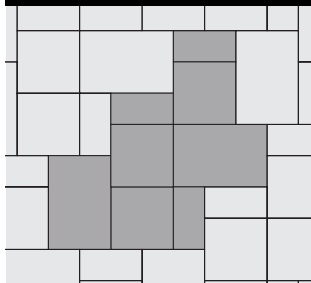
Natural Stone F - 34% 24" x 36",
24% 24" x 24", 18% 18" x 24", 24% 12" x 24"

OLDE GREENWICH COBBLE®

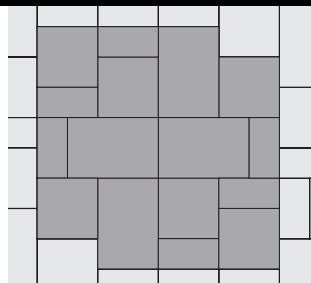


Greenwich G - 67% Large Rectangle, 33% Medium Rectangle

SERIES™ RANDOM

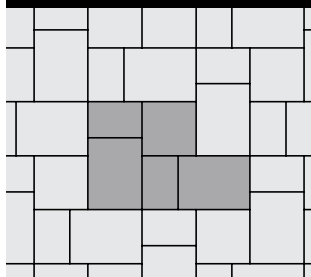


Series A - 40% Lg Rect, 40% Sq, 20% Sm Rect.

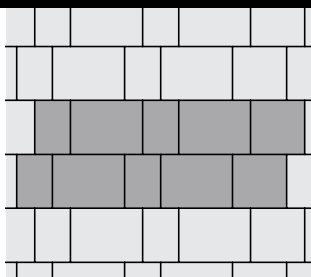


Series B - 40% Lg Rect, 40% Sq, 20% Sm Rect.

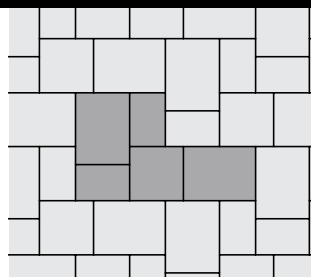
RICHCLIFF®



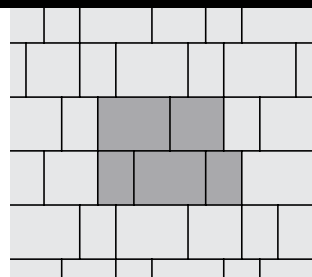
Richcliff A - 53% 12" x 9", 20% 9" x 9", 27% 6" x 9"



Richcliff B - 53% 12" x 9", 20% 9" x 9", 27% 6" x 9"

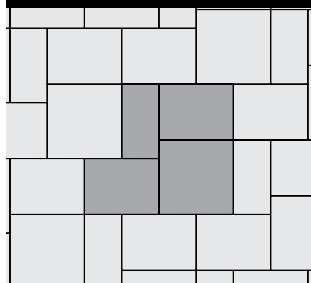


Richcliff C - 53% 12" x 9", 20% 9" x 9", 27% 6" x 9"

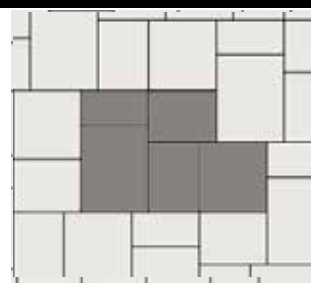


Richcliff D - 53% 12" x 9", 20% 9" x 9", 27% 6" x 9"

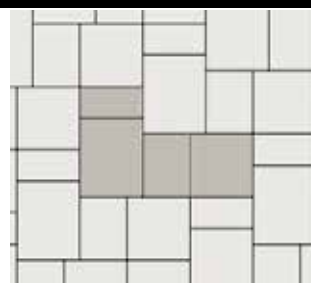
RIVENSTONE™



I - 33% 24"x24", 50% 18"x24", 17% 12"x24"

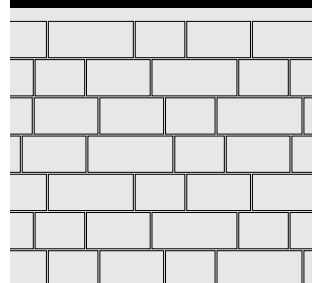


J - 29% 24"x30", 24% 24"x24", 35% 18"x24", 12% 12"x24"



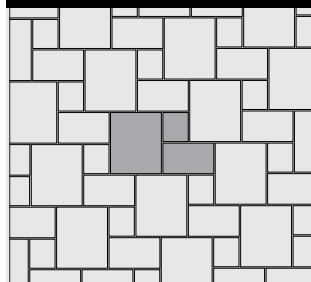
K - 36% 24"x30", 29% 24"x24", 21% 18"x24", 14% 12"x24"

TRIBECA COBBLE™

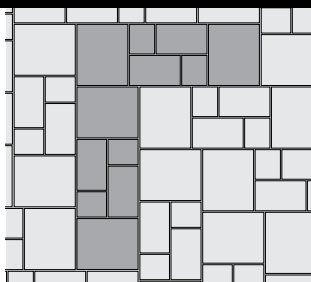


Tribeca Cobble - 100% Random Bundle

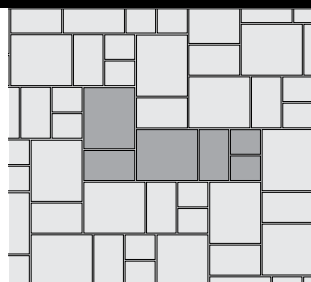
THORNBURY™



Thornbury A - 49% Large Rec., 34% Medium Rec., 17% Small Rect.

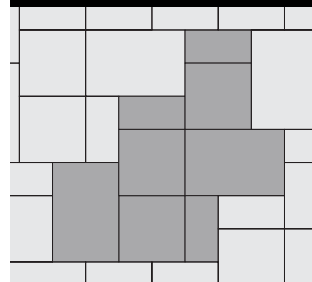


Thornbury B - 49% Large Rec., 34% Medium Rec., 17% Small Rect.



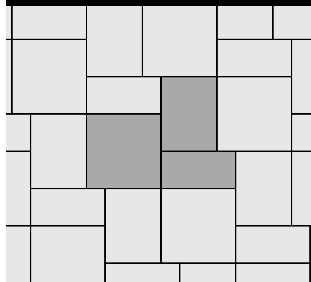
Thornbury C - 49% Large Rec., 34% Medium Rec., 17% Small Rect.

UMBRIANO® RANDOM

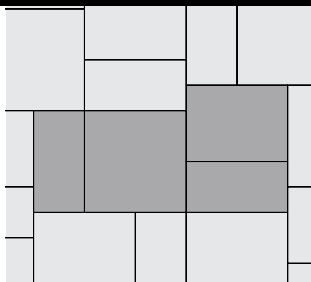


Umbriano Random A - 40% Large Rect., 40% Square, 20% Small Rect.

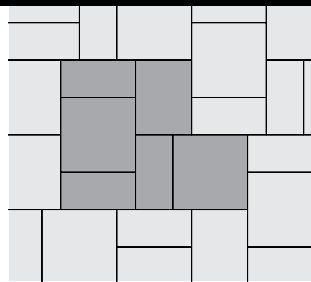
YORKSTONE™



A - 45% 24"x24", 33% 18"x24", 22% 12"x24"



J - 36% 24"x24", 28% 18"x24", 36% 12"x24"



K - 47% 24"x24", 18% 18"x24", 35% 12"x24"

Tuscany Collection**



Tuscany Fireplace
Sandstone with Copthorne®
(3 Color Blend)



Tuscany Fireplace
Sierra with Copthorne®
(3 Color Blend)

Element Product Codes

Tuscany Collection

	Sandstone	Sierra
Fireplace Top	RS-ELE074-1	RS-ELE095-2
Fireplace Bottom	RS-ELE088-1	RS-ELE096-2
Wood box Set	RS-ELE028-1	RS-ELE027-1
Arched Hearth	RS-ELE016-1	RS-ELE017-1

WEIGHTS

Tuscany Collection

Fireplace Top —	2925 lbs
Fireplace Bottom —	4225 lbs
Wood Boxes —	4005 lbs
Arched Hearth —	1170 lbs

Special Order



Tuscany Sandstone with
Umbriano®



Tuscany Sierra with
Richcliff®



Tuscany Sierra with
Courtstone®

Barcelona Collection**



Barcelona Fireplace
Sierra with Umbriano®
(Summer Wheat)

Element Product Codes

Barcelona Collection

	Sierra
Fireplace	RS-ELE214
Wood box Set	RS-ELE213
Arched Hearth	RS-ELE212

Weights:

Barcelona Collection

Fireplace Top —	2725 lbs
Fireplace Bottom —	4170 lbs
Wood Boxes —	4200 lbs
Arched Hearth —	1200 lbs

Special Order



Barcelona Sandstone with
Copthorne®



Bella

The Bella pre-built fireplace is constructed from Rivercrest® Wall (page 31).

Available in Coastal Slate color only.

Please call for availability.

WEIGHTS

Bella

Fireplace Top — 1,685 lbs
Fireplace Bottom - 3,155 lbs
Grill Island — 3,420 lbs



Bella Grill Island

SPECIAL ORDER

The Bella pre-built grill island is constructed from Rivercrest® Wall (page 31).

Available in Coastal Slate color only.

Bella and Moda Series are sold as shown. There is no ability to customize.

Moda

SPECIAL ORDER

The Moda pre-built fireplace is constructed from Lineo Dimensional Stone (page 28) and Series™ (page 18) accent.

Available in Granite color only.

Element Product Codes

<u>Bella</u>	RS-ELE318
<u>Moda</u>	RS-ELE317

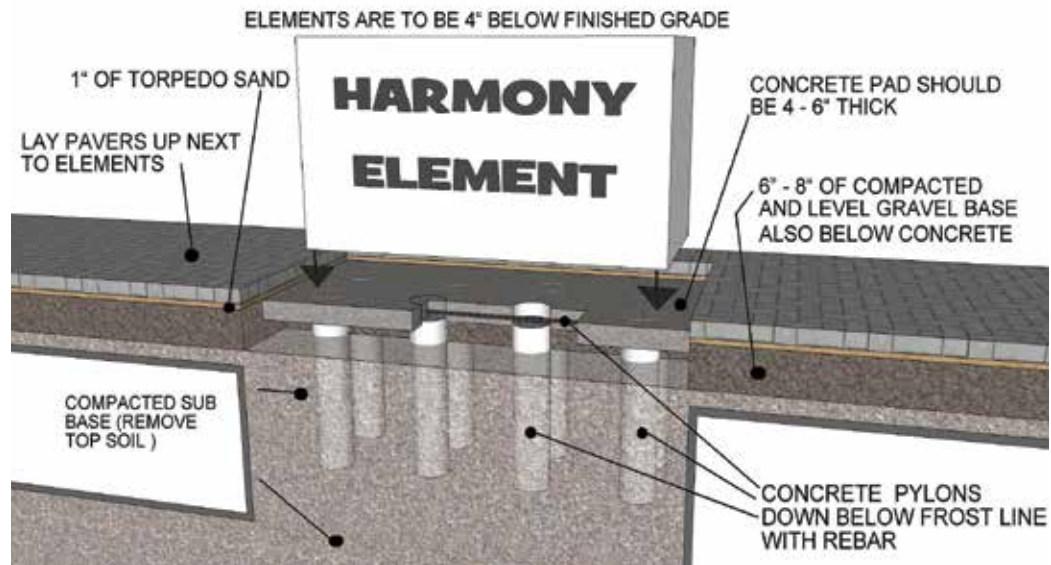
WEIGHTS

Moda

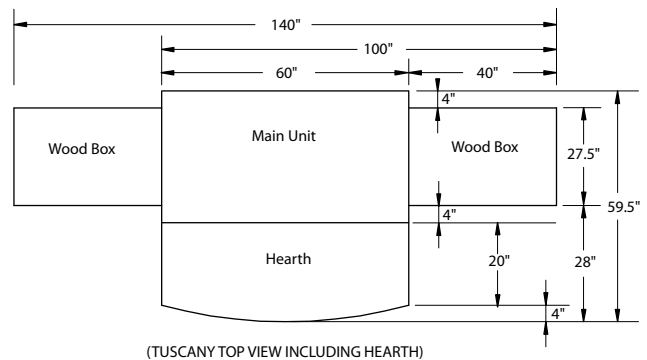
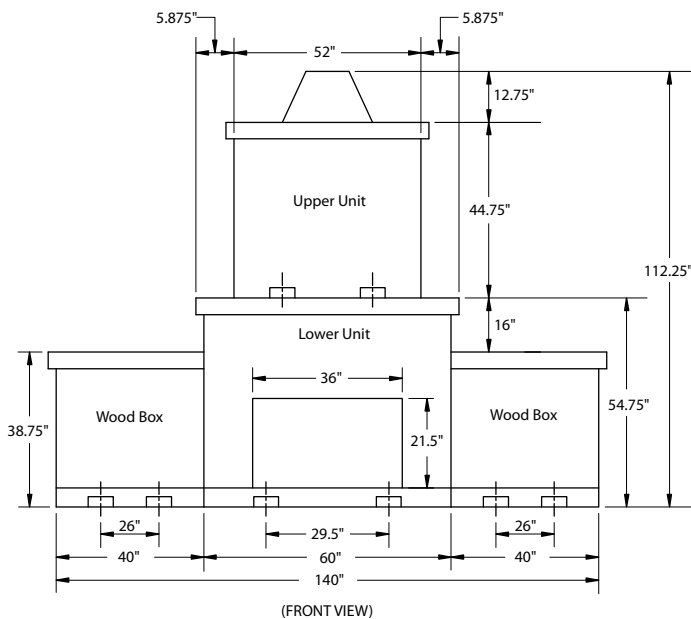
Fireplace Top — 2,186 lbs
Fireplace Bottom - 3,284 lbs



Typical Cross Section for Concrete Pad Installation



Tuscany & Barcelona Fireplace



Guarantee

The standard Unilock guarantee applies to the units used to construct Unilock Elements. (See Unilock literature for details.) Third party grills and fireboxes carry their respective manufacturer's warranty, and may change without notice.

Note: Unilock reserves the right to change model designs, accessories and colors without notice. Unilock will not be responsible for improper use or handling that results in property damage. Some models may not be exactly as shown. Fireplaces come complete with UL- approved stainless steel fireboxes. Check local building codes and regulations prior to ordering and installing Unilock Elements.

TECHNISEAL PRO SERIES CLEANING PRODUCTS



PROFESSIONAL GRADE OIL & GREASE REMOVER

RS-CLN001

Professional Grade Oil and Grease Remover is an industrial strength petroleum-based product. It lifts and absorbs embedded oil and grease stains as it dries from a liquid to a powder. Specially formulated for concrete pavers, slabs walls, natural stone, poured or stamped concrete, etc. Works without damaging or discoloring material and is easy to use.

Packaging: • 1 quart container • 6 per case • 100 cases per skid (600 qts)

Note: Carefully read all instructions and safety information on product label prior to application. For additional safety information, see SDS.



PAVER PRIMER & EFFLORESCENCE REMOVER

RS-CLN002

Paver Primer is specially formulated to dissolve efflorescence (whitish salt deposit) and remove ground-in dirt on paving stones and concrete, without discoloring or damaging surfaces. It cleans evenly, and enables the sealant to better penetrate the material to be treated.

Packaging: • 1 gallon • Box of 4 x 1 US gallon • 45 cases per skid (180 gallons) • 150 sq ft approx. coverage

Note: Carefully read all instructions and safety information on product label prior to application. For additional safety information, see SDS.



RUST REMOVER

RS-CLN012

Paver Cleaner cleans rust from paving stones and concrete without discoloring the surface.

Packaging: • 1 quart container • 6 per case • 120 cases per skid (720 qts)

Note: Carefully read all instructions and safety information on product label prior to application. For additional safety information, see SDS.



PAINT, TAR & RUBBER REMOVER

RS-CLN007

Description: Paver Cleaner thoroughly dissolves paint, tar or bitumen, rubber and chewing gum, from paving stones, concrete, and masonry.

Packaging: • 1 liter container (1US qt) • 6 per case • 120 cases per skid (720 x 1 liter/ 720 x 1 US qt)

Note: Carefully read all instructions and safety information on product label prior to application. For additional safety information, see SDS.



PAVER RESTORER

RS-CLN044 (1 gal) / RS-CLN019 (5 gal)

Description: Paver Restorer's concentrated formula removes cement slurry and jointing haze, as well as stains generated by pavers and slabs cuts. Unlike muriatic acid, Paver Restorer has very little odor and is environmentally friendly.

Packaging: • 1 gallon / 4 per case • Cleans up to 200 square feet • Coverage depends on surface porosity and severity of haze.

Note: Carefully read all instructions and safety information on product label prior to application. For additional safety information, see SDS.

SUREBOND CLEANING PRODUCTS



SUREBOND SURECLEAN

RS-CLN014 - 1 Gal

SureClean is a powerful, super concentrated non-acid multi-use cleaner that dislodges deep set dirt and grime, tire scuffing, and environmental soiling. SureClean's unique Clean Rinse Technology allows residue to be quickly and easily rinsed away with a high or low pressure washer. Its biodegradable and environmentally friendly phosphate-free formula replaces most harsh acid cleaners and its alkaline nature will help neutralize acid based detergents and cleaners. Due to HAZMAT Regulations, no more than 1000 lbs. may be picked up at one time. 1 Gallon / 4 per case / 27 Cases per Skid



SUREBOND EFFLO OFF

RS-CLN062 - 1 Gal / RS-CLN067 - 5 Gal

Efflo Off is a buffered, non-acid, organic salts, technologically advanced concentrated cleaner designed for the removal of efflorescence, mineral and salt deposits from virtually any type of hardscape surface with minimal or no brushing. Efflo Off is mild but may be corrosive to certain woods, metals and plants. Covering and protecting surrounding areas during application may be required. Efflo Off's unique Clean Rinse Technology allows residue to be quickly and easily rinsed away with a high or low pressure washer. Efflo Off's biodegradable and environmentally friendly phosphate free formula replaces several types of harsh acid cleaners and its alkaline nature will help neutralize acid based detergents and cleaners.

Due to HAZMAT Regulations, no more than 1000 lbs. may be picked up at one time.

1 Gallon / 4 per case / 36 Cases per Skid (144 each)



SUREBOND STAIN & RUST BUSTER

RS-CLN065 - 1 Quart

S.R.B. is a powerful, concentrated spot cleaner which dislodges and removes common stains caused by moss, mildew, leaf, rust, blood, beverage spills and non-greasy food. S.R.B.'s concentrated, biodegradable formula allows for a full spectrum of dilutions matched to your cleaning needs. S.R.B.'s unique Clean Rinse Technology quickly and easily rinses away residue with a high or low pressure washer.

1 Quart/ 12 per case / 27 Cases per Skid (324 each)



SB-10 ADHESIVE

RS-ADH009-1 (10 oz) / RS-ADH015-1 (28 oz)

(Conforms to UN-STD. 1804, ASTM 2339-70& FHA UM-60) Color: light tan

Surebond SB-10 adhesive SB-10 Paver Bond is a fast set up, quick curing, superior strength, structural grade hardscape adhesive. Adheres well in extreme conditions such as temperatures ranging from 0° to 100° F, frozen and/or damp substrates. Superior durability to withstand extreme wear and tear including heavy vehicular traffic. Helps to level and shim. Applies easily with a caulking gun.

• Low odor • VOC compliant • 10 oz. Tube: 12/case & 140 cases/skid • 28 oz Tube: 12/case & 60 cases/skid • 900 psi

Note: Carefully read all instructions and safety information on product label prior to application. For additional safety information, see SDS.



XP GATOR BLOCK ADHESIVE

RS-ADH039 (10.3 oz) / RS-ADH040 (28 oz)

Gator Block Bond Adhesive is one of the strongest polyurethane adhesives on the market, specially formulated for bonding concrete, natural stone, blocks, bricks and pavers and can be used on dry or damp surfaces. It bonds permanently in 24 hours.

• Low odor • VOC compliant • 10.3 oz. Tube: 12/case & 90 cases/skid • 28 oz Tube: 12/case & 60 cases/skid • 850 psi in 24 hours/1000 psi in 7 days

Note: Carefully read all instructions and safety information on product label prior to application. For additional safety information, see SDS. **Product is sold by case/skid only.**



3006 ULTRA ALL PURPOSE ELASTOMERIC SEALANT

RS-TOOL202 Grey

3006 Ultra is a premium sealant featuring outstanding flexibility and adhesion to surfaces.

10.5 oz. Tube / 12 per case

- 40% more flexible than standard latex caulking
- Paintable
- Water clean-up
- Dries non-tacky
- Interior and exterior use

Exceeds requirements for Federal Specification TT-S-00230C Type II Class A and meets performance requirements of ASTM C-920 Class 35. For additional safety information, see SDS.



SHERWIN WILLIAMS POWERHOUSE - ALL PURPOSE ELASTOMERIC SEALANT

RS-TOOL201 Tan

Sherwin Williams Powerhouse is a premium sealant that provides excellent flexibility and performance.

• 10 oz. Tube / 12 per case • Crack proof seal • Water/Weatherproof seal

Note: Carefully read all instructions and safety information on product label prior to application. For additional safety information, see SDS.

SEALING PRODUCTS



SUREBOND 8700 WET LOOK JOINT STABILIZING SEALER

RS-SEAL151 (1 gal) / RS-SEAL152 (5 gal)

Surebond 8700 is an advanced premium acrylic sealer with a gloss finish that repels water within 90 minutes and stabilizes joint sand. SUREBOND 8700 is specially formulated with antifungal agents designed to help inhibit the growth of mold, fungi and moss on horizontal pavement surfaces. This breathable sealer can be applied immediately to new installations and will not trap naturally occurring efflorescence. Note: Carefully read all instructions and safety information on product label prior to application. For additional safety information, see SDS. Packaging: 4 1-gallons/case • Approximate coverage 80-120 sq.ft. per gallon • Due to HAZMAT regulations, 28 cases per skid or 22-5 gallons per skid/truckload • **Due to HAZMAT Regulations**, no more than 1000 lbs. may be picked up at one time.



SUREBOND 1300 JOINT STABILIZING SEALER

RS-SEAL037 (1 gal) / RS-SEAL036 (5 gal) / RS-SEAL-38 (55 gal)

Surebond 1300 is an epoxy modified, single-component VOC, EPA, and OSHA compliant, solvent-free, penetrating sealer that provides protection to interlocking paving stone installations against salt spray, acid rain, food and beverage stains, and other oxidizers. This matte finish sealer binds joint sand together to ensure the integrity of the pavement by forming a homogeneous, flexible pavement that stops erosion or joint sand failures in large paver installations. This sealer is also used to seal retaining walls and for concrete and aggregate and split-face stone to protect against staining, salt spray, and acid rain damage and discoloration for architectural, industrial, and residential installations. Packaging: 6 1-gallons/case • 27 cases per skid • 36 5-gallon pails/skid • Approximate coverage 100-150 sq.ft. per gallon



WL4 TECHNISEAL® PROSERIES WET LOOK WATER REPELLANT

RS-SEAL001 (1gal) / RS-SEAL073 (5 gal) / RS-SEAL003 (55 gal)

Made of acrylic and plasticizers, Wet-Look Paver Protector (WL4) is a wet-look, gloss-finish and microporous transparent coating that protects pavers made of concrete while enhancing their original color. It reduces oil and dirt penetration, and makes cleaning easier. Easy to apply, it penetrates the surface for maximum adhesion and durability. It will not peel or discolor. It resists the elements (freeze-thaw cycles, sun, rain, etc.), as well as calcium and salt. It also resists hot tire pick-up. Note: Carefully read all instructions and safety information on product label prior to application. For additional safety information, see SDS. For outdoor use only. Packaging: 4 1-gallons per case • Approximate coverage 100-150 sq.ft. per gallon • **Due to HAZMAT regulations** no more than 1000 lbs. may be picked up at one time., (22 Cases per skid or 19- 5 Gallon pails per skid/truckload)



WL5 TECHNISEAL® PROSERIES WET LOOK RECOATER PAVER PROTECTOR

RS-SEAL113 (1gal) / RS-SEAL096 (5 gal)

Wet Look Recoater (WL5) is specially formulated for surfaces previously sealed with the WL4 or WLWR Protectors. This easy to apply sealer, adds a rich satin and glossy appearance to pavers. Consisting of acrylic and plasticizers, the Wet Look Recoater (WL5) can be used to effectively protect and enhance hardscape installations. The sealer has optimum oil repellency and resists the assaults of weather (freeze-thaw cycles, sun, rain, etc.) as well as calcium and salt. Note: Carefully read all instructions and safety information on product label prior to application. For additional safety information, see SDS. For outdoor use only. Packaging: 4 1-gallons per case • Approximate coverage 100-150 sq.ft. per gallon • **Due to HAZMAT Regulations**, no more than 1000 lbs. may be picked up at one time. (22 cases / skid or 19 x 5 gallon per truck load)



BP PRO WET LOOK SOLVENT-BASED SEALER

RS-SEAL049-1 (1 gal) / RS-SEAL050 (5 gal) / SPECIAL ORDER (55 gal)

Designed specifically for use on block paving to seal the paver surface and fuse the joint sand. It is a solvent-based single component polymer that creates a semi-gloss finish. It has the consistency of a light oil and is clear in appearance. It has a strong odor when in its liquid state and dries to a transparent semi-gloss finish with a darkened wet look. It can be used outdoors on new and existing projects because it is UV stable. WetLook Stabilizing Sealer can be applied immediately because it is breathable and does not trap moisture and it has outstanding coverage. The product is easy to install and offers great stain and environment protection. Cured product is heat and freeze resistant. Packaging: 4 1-gallons per case • 50-125 sq.ft. coverage per gallon (approx.) • Due to HAZMAT regulations, 27 cases per skid or 25-5 gallons per skid/truckload • **Due to HAZMAT Regulations**, no more than 1000 lbs. may be picked up at one time.

SEALING PRODUCTS



BP PRO WET LOOK JOINT STABILIZING SEALER

RS-SEAL078 (1 gal) / RS-SEAL079 (5 gal) / RS-SEAL080 (55 gal)

Designed specifically for use on block paving to seal the paver surface and fuse the joint sand. It is a solvent-based single component polymer that creates a semi-gloss finish. It has the consistency of a light oil and is clear in appearance. It has a strong odor when in its liquid state and dries to a transparent semi-gloss finish with a darkened wet look. It can be used outdoors on new and existing projects because it is UV stable. WetLook Stabilizing Sealer can be applied immediately because it is breathable and does not trap moisture and it has outstanding coverage. The product is easy to install and offers great stain and environment protection. Cured product is heat and freeze resistant. Packaging: 4 1-gallons per case • 50-125 sq.ft. coverage per gallon (approx.) • Due to HAZMAT regulations, 27 cases per skid or 25-5 gallons per skid/truckload • Due to HAZMAT Regulations, no more than 1000 lbs. may be picked up at one time.



BP PRO ENHANCED JOINT STABILIZING SEALER

RS-SEAL042 (1 gal) / RS-SEAL043 (5 gal) / RS-SEAL044 (55 gal)

BP Pro Enhanced Joint Stabilizing Sealer is designed specifically for use on block paving to stabilize joint sand and seal the paver surface. It is a water-based, single-component polymer that penetrates into the pores and seals the surface with a coating that creates a semi-gloss finish. Enhanced Joint Stabilizing Sealer is a green product that is solvent free and environmentally friendly. It is VOC, EPA, OSHA, and FDA compliant. It is non-hazardous and non-toxic. Stabilized joint sand will significantly reduce weeds and insect infestations. It is a dual-purposed surface and joint sand stabilizer. Packaging: 4 1-gallons per case • 36 cases per skid • 36 5-gallons per skid • 4 55-gallon container per skid • 80-100 sq.ft. coverage per gallon (approx.)



TECHNISEAL® SUREFOOT ANTI-SLIP GRIT RS-SEAL166 (Solvent-based) / RS-SEAL167 (Water-based)

Unicase SureFoot Anti-slip grit mixes easily with sealer to reduce the slipperiness of pavers without changing the sealer's original appearance. It provides a uniform coat and a safer, more slip-resistant surface where slips and falls are likely to occur; such as pool decks, access ramps, etc. Two separate formulas are available to mix well with either water or solvent based sealers. Directions: 5 Scoops mix into 1 Gallon of Sealer / One Can mixes into 5 Gallons of Sealer. Packaging: 6 cans/case Note: Carefully read all instructions and safety information on product label prior to application. For additional safety information, see SDS.

SANDS



JOINTING SAND

RS-SAND001-1 - Tan RS-SAND140 - Grey (limited stock available)

50 lb/bag 56 bags/skid

Kiln dried and angular shaped in order to flow easily and stay in place.



SEK POLYSWEEP SAND

RS-SAND045 - Tan / RS-SAND046 - Grey

50 lb/bag 56 bags/skid

For concrete paver, cast stone pavements, slabs and natural stone joints up to 3/4". PolySweep polymeric sand is a blend of native sands and high quality synthetic polymers specially formulated to allow the joints to expand and contract with elements such as extreme heat, extreme cold and freeze/thaw cycles.

Also available in limited stock - X-treme Wide PolySweep for joints up to 4" RS-SAND111 - Russett Brown / RS-SAND117 - Grey



TECHNISEAL PRO SERIES RG+ POLYMERIC SAND

RS-SAND028 - Tan / RS-SAND030 - Grey

For Standard Joints - 50 lb/bag, 56 bags/skid (2860 lbs/skid)

A special mix of graded sand and binder specifically formulated for achieving optimum lock-up of pavers or slabs by filling the joints between them. Unlike regular sweeping jointing sand, Polymeric Sand resists insect penetration, weed growth, and erosion. New formulation with half hour setting time. Coverage: Approx. 75 sq. ft./bag Coverage will vary depending on the type/size of stone used. Note: This product is recommended with extra care for use with Copthorne®, Courtstone®, Richcliff®, Town Hall® and Umbriano® products. Umbriano must have the surface cleaned with a foam squeegee post installation. This product is not suitable for use with Il Campo®, Series™ and Unigranite®.



TECHNISEAL PRO SERIES HP NEXTGEL POLYMERIC SAND

RS-SAND131 Prairie - Tan / RS-SAND130 - Prairie Grey

For Large Joints - 50 lb/bag, 56 bags/skid (2860 lbs/skid)

Designed for paver joints up to a maximum of 1 inch. This paver sand is a high-performance polymer sand - it is the ideal product for heavy traffic and wet areas. Weeds and insects in paver joints is part of the past with this high-end product. This polymer sand is a mixture of graded sand (ASTM C144) and binder. It penetrates easily into joints, ensuring a fast and efficient jointing solution. This easy to use jointing sand will start to harden in minutes after water activation, and it quickly becomes resistant to erosion caused by water (rain, sprinklers and spray). Coverage: 65-85 sq.ft. coverage per bag for narrow joints, larger joints will require more sand.



EASY-PRO™

RS-SAND066-1 - Tan / RS-SAND068-1 - Black / RS-SAND069-1 - Grey

50 lb container - premixed

Ultimate Paving Stone Joint Compound. Designed for installation in light rain or sun with a surface temperature above 32°F, this pre-mixed epoxy resin product is ideal for patios, pool decks and walkways. It is also permeable. Features: Vacuum packed, pre-mixed and ready to use, eco-friendly (60% renewable products), no haze formulation, for joint widths starting from 1/4" wide and 1 1/4" deep.

Colors: Tan, Black, Grey

Coverage: Approximately 75 sq. ft./container. Coverage will vary depending on the type/size of stone used.

STORAGE: Open product good for 30 day when covered with water.

Note: This product is not suitable for use with Umbriano®, Il Campo®, Series™, Unigranite®, Artline™ and Bristol Valley®.



GATOR HP SUPER SAND BOND

RS-SAND078 - Beige / RS-SAND080 - Slate Grey

50lb. bags (56 bags/skid)

Wetcast & Natural Stone Joints up to 1"

Super Sand Bond is a unique mixture of polymer binders and calibrated sand available in Beige, Slate Grey, Ivory and Diamond Black. The installation of Super Sand Bond is almost identical to using regular paver joint sand, except for the application of water. Once Super Sand Bond sets, it becomes very firm and locks between the paver joints. This firm bond maintains pavers securely in place, being equally effective on both horizontal and sloped surfaces.



GATOR MAXX BOND

RS-SAND074 - Beige / RS-SAND075 - Slate Grey

50lb. bag (56 bags/skid)

For Concrete Paver, Wetcast & Natural Stone Joints up to 1"

Gator Maxx Sand is the first polymeric sand specifically designed for drainage and non-drainage base systems. It can be used with concrete pavers, wetcast and natural stones. It is recommended for a variety of uses, including pool sides, patios, foot paths, driveways, parking spaces, pavements etc. This complete multi-purpose sand is available in four colors: Beige, Slate Grey, Ivory and Diamond Black. It sets above the freezing temperature (32°F / 0°C) and can be used for joints up to a maximum of 1 inch.



ALLIANCE SUPER SAND G2 - 50 LBS.

RS-SAND156 - Beige / RS-SAND157 - Slate Grey

SUPERSAND G2 is made with a state-of-the-art manufacturing process. Specifically, calibrated sand is mixed with sophisticated intelligent polymers. This new generation of Intelligent Polymers neutralizes haze and dust. No blower is needed and the intelligent polymeric sand requires only one watering. SUPERSAND G2 is recommended for a variety of uses including pool decks, patios, footpaths, driveways, parking spaces and pavements.

50 lb Bag / 56 Bags per Skid / 15 Skids per Truck load (Direct shipments will arrive in box trucks.)



ALLIANCE MAXX G2 - 50 LBS.

RS-SAND158 - Beige / RS-SAND159 - Slate Grey / RS-SAND160 - Diamond Black / RS-SAND161 - Ivory

GATOR MAXX G2 is made with a state-of-the-art manufacturing process. Specifically, calibrated sand is mixed with sophisticated intelligent polymers. This new generation of Intelligent Polymers neutralizes haze and dust. The polymeric sand application is now dust free and haze free. No blower is needed and the intelligent polymeric sand requires only one watering. GATOR MAXX G2 is recommended for a variety of uses including pool decks, patios, footpaths, driveways, parking spaces, pavements, etc.

50 lb Bag / 56 Bags per Skid / 15 Skids per Truck load (Direct shipments will arrive in box trucks.)

SANDS



EUROSTONE BOND

RS-SAND097 – Beige / RS-SAND095 – Slate Grey / RS-SAND116 Diamond Black / RS-SAND132 Ivory

50lb. bag (56 bags/skid)

For Driveway Aprons Application & Cobblestone Joints up to 3.5cm / 1"

Eurostone Bond is the first polymeric sand specifically designed for drainage and non-drainage base systems. It can be used with natural stones and cobblestone. It is recommended for a variety of uses, including streets, plazas (pedestrian and vehicular traffic) paths, sloping areas, around pools, etc. This complete multi-purpose sand is available in three colors: Beige, Slate Grey and Diamond Black. It sets above the freezing temperature (0°C / 32°F) and can be used for joints up to a maximum of 3.5 cm/ 1".



GATOR DUST BOND

RS-SAND072 – Beige / RS-SAND073 – Slate Grey

50lb. bag (56 bags/skid)

For Stone Joints 1/2" to 4"

Gator Dust is a unique mixture of polymer binders and calibrated crushed stone available in Sahara Beige or Stone Grey. Once Gator Dust sets, it becomes very firm and locks between the stone joints. This firm bond maintains the stones securely in place equally effectively on both horizontal and sloped surfaces.



GATOR AQUA ROCK

RS-AGG032 - 50lb. bag (56 bags/skid) / RS-AGG033 (2200 lb. SuperSak)

50lb. bags (56 bags/skid)

For Permeable Paver Joints Graded ASTM NO.9 Granite Stone

Gator Aqua Rock is manufactured to meet ASTM No.9 requirements for permeable paver joint units. The calibrated gradation obtained from the fractured high-strength granite makes it the ideal product for the bedding course & jointing material to collect surface water run-off and help stabilize interlocking paver surfaces.

Coverage: 20-25 Sq.Ft. = 50 lb bag / 880-1100 Sq.Ft. = 2200 lb bag



SEK PERMEABLE CHIPS

RS-AGG035 - Eclipse Black / RS-AGG036 - Eclipse Black 2500 lb / RS-AGG034 - Sunset Red /

RS-AGG037 - Saturn Tan / RS-AGG040 - Stormy Grey

50lb. bags (56 bags/skid)

The high strength crushed and washed granite meets ASTM No. 9 Stone Specifications for permeable joint filler.

Ensure surface infiltration performance- SEK PermChip is the perfect choice for permeable paving stone installations, both as a bedding course and as a joint filler. SEK PermChip is an extremely hard material, easily withstanding the rigors of freeze/thaw cycles. It will not break down, helping to control the runoff for years to come. The right choice for both residential and commercial applications, including driveways, patios, walkways and parking lots. SEK PermChip comes in four colors: Eclipse Black, Sunset Red, Saturn Tan and Stormy Grey.

Coverage: 30-35 Sq.Ft. = 50 lb bag / 1500-1750 Sq.Ft. = 2500 lb bag

UNILOCK DRIVEGRID™ SYSTEM

X & T SLAB SPACERS



UNILOCK DRIVEGRID™ SYSTEM

RS-FAB075

- 120' x 13.1' Roll - 1572 Sq. Ft. & 56 lbs per Roll



X & T Slab Spacers

- 250 per bag
- T spacers 2" x 1" (RS-ACC236)
- X & T bagged separately
- X spacers 2" x 2" (RS-ACC237)

PAVER PULLER



EZ Puller

RS-TOOL178

- E-Z Puller removes pavers up to 16 inches with the E-Z 16
- No damage to surrounding pavers
- Sealed pavers or Polymeric Sand - no problem, pavers pop right out
- E-Z one man operation, saving time and money
- Great for engraved paver installations

BASE/DRAINAGE SYSTEMS

Gator Tile System

Contact Unilock for more information.



Wall Drain Pro

12 unites/case, 63 cases/pallet

Wall Drain Pro is a simpler, more effective wall drain than you've ever used before.

- Easy Installation
- Aesthetically Pleasing
- Integral Component of Wall Construction
- Customizable Height
- Works with Block or Timber Walls

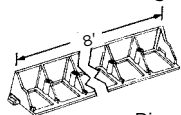
Tan - RS-ACC122
Grey - RS-ACC123
Black - RS-ACC086

EDGE RESTRAINTS

SnapEdge - One-Piece Edging That Does It All!

RS-EDGE001

- Only one part required for straight runs or curved installations.
- Built-in connector fastens one piece to the next - convenient 96" size, makes them easy to transport.
- Unique 'Snip and Flex' feature speeds installations of curves and corners without pre-planning.
- The open design allows a root system to grow through SnapEdge, further reinforcing the installation.
- Engineered to provide a strong, easy-to-install edge restraint for concrete/clay pavers.
- Nail hole bosses are full-length cylinders. Hammer blows will not fracture or force nail heads through edging.



Product Information:
8' (96") length pcs.
Sidewall: 1 7/8"
Pieces per Pallet: 672 (5,376 in. ft.)

Pieces per Bundle: 24 (192 in. ft.)
Bundles per Pallet: 28
Pallet Weight: 1395 lbs.
Pallet Size: 98" l x 48"w x 50" h

PermEdge Permeable Paver Edging

RS-EDGE033

- Designed specifically for permeable pavement with open graded base material.
- Holds pavement edges securely in place.
- Does straight and curved edges.



Product Information:
8' (96") length pcs.
Weight per Unit: 2.5 lbs.
Pieces per Pallet: 64 (72 in. ft.)

Freight Class: 300
Pallet Weight: 210 lbs.
Pallet Size: 98" l x 48"w x 50" h

ACCESSORY QUICK REFERENCE GUIDE

CLEANERS

RS-CLN001	TECHNISEAL PROSERIES OIL & GREASE REMOVER
RS-CLN002	TECHNISEAL PROSERIES EFFLORESCENCE REMOVER - 1 GAL.
RS-CLN007	TECHNISEAL PROSERIES PAINT, TAR & RUBBER REMOVER - 1 QUART.
RS-CLN012	TECHNISEAL PROSERIES RUST REMOVER PAVER CLEANER - 1 QUART.
RS-CLN043	BP PRO ECO-NEW CONCENTRATE CLEANER - 1 GAL. - Special Order
RS-CLN044	TECHNISEAL PROSERIES PAVER RESTORER - 1 GAL.

WET LOOK SOLVENT BASED SEALERS

WL4 TECHNISEAL WET LOOK - PAVER PROTECTOR GLOSS FINISHERS	
1 GAL.: RS-SEAL001 (4 /CASE)	5 GAL.: RS-SEAL073 (51 LBS/PAIL) — 55 GAL.: RS-SEAL003 (520 LBS/DRUM)
BP PRO WETLOOK STABILIZING	
1 GAL.: RS-SEAL078 (4/CASE)	5 GAL.: RS-SEAL079 (40LBS/PAIL) — 55 GAL.: RS-SEAL080 (418LBS/DRUM)
BP PRO WETLOOK SOLVENT BASED	
1 GAL.: RS-SEAL049-1	5 GAL.: RS-SEAL050 — 55 GAL.: SPECIAL ORDER
SUREBOND SB-8700 WET-LOOK JOINT STABILIZING SEALER WITH ANTI-FUNGAL	
1 GAL.: RS-SEAL151 (4/CASE)	5 GAL.: RS-SEAL152

WATERBASED SEALERS AND ACCESSORIES

BP PRO NATURAL JOINT STABILIZING SEALER	
1 GAL.: RS-SEAL045	5 GAL.: RS-SEAL046
BP PRO PAVER ENHANCER STABILIZING SEALER	
1 GAL.: RS-SEAL042	5 GAL.: RS-SEAL043 — 55 GAL.: RS-SEAL044
SUREBOND SB-1300 JOINT SAND STABILIZER SEALER	
1 GAL.: RS-SEAL037	5 GAL.: RS-SEAL036 — 55 GAL.: RS-SEAL038

ADHESIVE & CAULK

RS-ADH009-1	SB-10 ADHESIVE 100Z. (12/CASE - 140C./SKID)
RS-ADH015-1	SB-10 ADHESIVE 28OZ. (12/CASE - 60C./SKID)
RS-ADH039	XP GATOR BLOCK ADHESIVE 10.3 OZ. (12/CASE - 90C./SKID) *SOLD BY CASES ONLY*
RS-ADH040	XP GATOR BLOCK ADHESIVE 28 OZ. (12/CASE - 60C./SKID) *SOLD BY CASES ONLY*
RS-TOOL201	SHERWIN WILLIAMS POWERHOUSE - TAN (12/CASE)
RS-TOOL202	WL ULTRA 3006 CAULK 10 PZ. - GREY (12/CASE)

SANDS

SEK JOINTING SAND 50# BAGS (56 BAGS/SKID)	
RS SAND001 - 1	
TECHNISEAL PROSERIES RG+ - POLYMERIC SAND - 50# BAGS (56 BAGS/SKID)	
PRAIRIE TAN: RS-SAND028 — PRAIRIE GREY: RS-SAND030	
TECHNISEAL PROSERIES HP NEXTGEL - POLYMERIC SAND - 50# BAGS (56 BAGS/SKID)	
PRAIRIE GREY: RS-SAND130 — PRAIRIE TAN: RS-SAND131	
SEK - POLYSWEEP SAND 50# BAGS (56 BAGS/SKID)	
TAN: RS-SAND045 — GRAY: RS-SAND046	
SEK - X-TREME WIDE JOINT SAND (56 BAGS/SKID)	
RUSSET BROWN: RS-SAND111 — GREY: RS-SAND117 - Special Order *	
ALLIANCE - SUPERSAND HP 50# BAGS (56 BAGS/SKID)	
BEIGE: RS-SAND078 — SLATE GREY: RS-SAND080	
ALLIANCE - GATOR DUST BOND (56 BAGS/SKID)	
SAHARA BEIGE: RS-SAND072 — STONE GREY: RS-SAND073	
ALLIANCE - GATOR MAXX BOND 50# BAGS (56 BAGS/SKID)	
BEIGE: RS-SAND074 — SLATE GREY: RS-SAND075	
ALLIANCE - EUROSTONE BOND (56 BAGS/SKID)	
IVORY: RS-SAND132 — BEIGE: RS-SAND097 — SLATE GREY: RS-SAND095 — BLACK DIAMOND: RS-SAND116	
UNILOCK EASY PRO PREMIXED JOINT STABILIZING COMPOUND 50# CONTAINER (36 PAILS/SKID)	
TAN: RS-SAND066-1 — BLACK: RS-SAND068-1 — GREY: RS-SAND069-1	
ALLIANCE SUPER SAND G2 - 50 LBS.	
BEIGE: RS-SAND156 — SLATE GREY: RS-SAND157	
ALLIANCE MAXX G2 - 50 LBS.	
BEIGE: RS-SAND158 — SLATE GREY: RS-SAND159 - DIAMOND BLACK: RS-SAND160 - IVORY RS-SAND161	

* ITEMS ARE SPECIAL ORDER

ACCESSORY QUICK REFERENCE GUIDE

PERMEABLE GRANITE CHIPS - ASTM NO. 9 (2-5mm)

SEK PERM CHIPS - 50# BAGS

ECLIPSE BLACK: RS-AGG035 — **SUNSET RED: RS-AGG034** — **SATURN TAN: RS-AGG037** — **STORMY GREY: RS-AGG040** - Special Order *

SEK PERM CHIPS - 2500# SUPERSAK

ECLIPSE BLACK: RS-AGG036 — **SUNSET RED: RS-AGG038** — **SATURN TAN: RS-AGG039** — **STORMY GREY: RS-AGG041** - Special Order *

ALLIANCE GATOR AQUA ROCK - GRANITE GREY

50#: RS-AGG032 — 2200# BAG: FS-RS-AGG033

BASE & DRAINAGE SYSTEMS

RS-ACC086 WALL DRAIN PRO BLACK (12/CASE - 63C./SKID) - TAN - RS-ACC122, GREY - RS-ACC123

EDGING & SPIKES

RS-EDGE001 SEK - SNAP EDGE - 8 FT PCS. (24PCS/Bnd 28Bnd/SKID)

RS-EDGE033 SEK - SNAP EDGE - PERMEABLE 8FT PCS.

RS-EDGE014 10" SPIKES (APPROX. 150/BOX)

UNICARE DRIVEGRID™ SYSTEM

RS-FAB075 13.1' x 120' Roll - 1572 Sq. Ft.

* ITEMS ARE SPECIAL ORDER

CALCULATIONS

AREA OF A CIRCLE

Radius (in.)	18	21	24	27	30	33	36	39	42	45	48	51	54	57
Radius (ft.)	1.50	1.75	2.00	2.25	2.50	2.75	3.00	3.25	3.50	3.75	4.00	4.235	4.50	4.75
Square Feet	7.07	9.62	12.56	15.90	19.63	23.75	28.26	33.17	38.47	44.16	50.24	56.72	63.59	70.85
Circumference (in.)	113.04	131.88	150.72	169.56	188.40	207.24	226.08	244.92	263.76	282.60	301.44	320.28	339.12	357.96
Circumference (Ft.)	9.42	10.99	12.56	14.13	15.70	17.27	18.84	20.41	21.98	23.55	25.12	26.69	28.26	29.83

Area of a circle = 3.14 x Radius x Radius

Circumference = 6.28 x Radius

AREA CONVERSION CHART

Square Feet	1	2	3	4	5	6	7	8	9	10	11	12	13	14
Square Meter	0.09	0.19	0.28	0.39	0.46	0.56	0.65	0.74	0.84	0.93	1.02	1.11	1.21	1.30
Square Meter	1	2	3	4	5	6	7	8	9	10	11	12	13	14
Square Feet	10.76	21.53	32.29	43.06	53.82	64.58	75.35	86.11	96.88	107.64	118.40	129.17	139.93	150.69
Cubic Yard	1	2	3	4	5	6	7	8	9	10	11	12	13	14
Cubic Feet	27	54	81	108	135	162	189	216	243	270	297	324	351	378

Area Square = Length x Width

Area Triangle = 1/2 Base x Height

Calculation charts and formulas are provided as a service by Unilock for estimating material requirements. Unilock will not be held responsible in any way for resulting product overage or shortage.

SEALER BEST PRACTICES

- The paver surface should be **clean** and free from oil, dirt, dust and any loose material. This ensures a uniform result and allows the sealer to better penetrate the surface.
- The pavers should be **free of any visible efflorescence**.
- If pavers have been sealed before, make sure to resealed with compatible product.
- **Surface must be dry** (48 hours without precipitation) and warm to the touch (morning).
- Joint sand must also be dry.
- Make sure lawn sprinklers are shut off.
- Best air temperature is between **50 degrees to 80 degrees** with no rain forecasted for the next 24 hours.
- It is best to apply product under constant weather conditions and use the **same application method from start to finish**.
- The paver joints should be completely filled with dry correctly-graded joint sand. The top level should not exceed the bottom of the chamfer or **1/8" below** the surface on the non-beveled or tumbled paver surface.
- **Always test the product** on a small hidden area to ensure the results will meet your expectations.
- Always show homeowners samples to ensure expectations.

At this point read all sealer instructions and determine the best sealer for your desired goal. Do you want to retain the original look, enhance the color, or stabilize the sand joint?

- **Read application information as each sealer can be applied differently.**
- **Make sure you have the correct equipment based on type of sealer. Solvent based sealers need solvent resistant sprayers, watering cans or paint trays.** Water base sealers can be generally applied using plastic equipment. Example: solvent based sealers come in metal containers and water based sealers come in plastic containers.
- Care should be taken that no excess sealer material is pooled on the surface during application always back roll. When using solvent based sealers make sure roller is solvent resistant or for all paints. Foam rollers work best and are less likely to pull sand from the joints.
- Stabilizing sealers are generally sprayed or flood coated with a watering can, then back rolled.
- Acrylic non-stabilizing sealers can be sprayed, then back rolled or rolled on using a metal paint tray.
- **Send your most experienced worker to do sealing projects.**

Easy-Pro™ BEST PRACTICES

- Ensure installed pavers or stone slabs meet ¼" joint width requirement and 1¼" depth requirement
- Ensure that paver surface has **proper drainage runoff** (Min 1" over 8'). Finished paver height should always be higher than grade to allow proper surface runoff.
- **Do not set pavers in bedding course of Limestone screenings.** This product holds moisture, and does not meet the gradation, drainage qualities or strength of coarse concrete sand or permeable chips.
- **Easy-Pro should not be used on non-drainable bases. Example: pavers directly over concrete.** Paver installations consisting of bases made of local road mix (CA6) and coarse sand bedding are considered drainable bases and are OK.
- Easy-Pro however installs and **works best on permeable bases.** Permeable bases for residential pedestrian use generally consist of a base layer of 0.75" crushed, angular, open-graded base material (CA-7) with a bedding course of 0.25" crushed, angular, chip stone (CA-16), instead of sand.
- **Before using Easy-Pro for any residential driveway applications, consult your Unilock Territory Manager.**
- **Compact pavers** first into setting bed to create proper interlock.
- Read and review all Easy Pro manufacturer methods of application. **(Read Directions)**
- Make sure pavers are **clean of all construction dust.** Residual construction dust will haze pavers. A power washer or Unilock cleaners can be used to clean the surface. Make sure construction boots are clean of dirt and dust. Tracking dirt and dust over the installation will embed dirt and dust in the products resin residue during the install.
- Paver surface must be **pre wet before application** of Easy-Pro. Not pre wetting the surface could cause spotting or blotching and will slow down the speed of installation.
- Distribute pails of Easy-Pro over paver area. **Stage pails** in areas of coverage. Example: one pail for every 50 square feet.
- **1st coat application;** cut sealed bag, spread sand evenly in small amounts. Use rubber squeegee to distribute material. **Fill up only half of joint depth.**
- Rinse material into joint. Water should be used to compress the Easy-Pro in the joint.
- **2nd coat application;** spread sand evenly in small amounts. Use rubber squeegee and water to distribute and compress material into joints
- Joints must be filled up to the bottom of the paver chamfer, or approximately 1/8" below the top of the pavers.
- **Remove any excess sand** from the paver surface with a fine bristle push broom.
- **Excess sand can be saved and reused.** Just place sand in plastic bail and cover with water. The water level should be 1" over the surface of the sand so air can't get to the Easy Pro.
- Follow up using a fine bristle whisk broom **removing any small excess sand particles** from the paver surface.
- Rope off area and let cure for 24 hours.
- Do not seal Easy-Pro installs until all resin has worn off the surface naturally. It is important to remember the resin is a natural protector of the surface and waiting to seal should not be a concern. If sealing is a must it should be done prior to the Easy-Pro install and 100 % cured before applying the Easy-Pro sand.

POLYSAND BEST PRACTICES

- Ensure that paver surface has **proper drainage runoff** (Min 1" over 8'). Finished paver height should always be higher than grade to allow proper surface drainage.
- **Do not set pavers in limestone screenings.** This product holds moisture and does not meet the gradation, drainage qualities or strength of coarse concrete sand.
- Make sure pavers are **clean of all construction dust.** Residual construction dust will haze pavers!
- **Compact pavers** into setting bed to create proper interlock.
- Read and review all polysand manufactures methods of application. **(Read Directions)**
- **Don't rush polysand installation.**
- **Paver area must be completely dry.**
- Lay bags of polysand over paver area. **Stage bags** in areas of coverage. Example: one bag for 60 square feet.
- **Do not over sweep sand.** Sweep sand back and forth within coverage area to fill paver joints.
- **Compact sand into joints.** This is a must in achieving proper density of the sand joint (repeat 3 times). Compaction is critical to assuring sand strength.
- Do not fill sand above the chamfer of paver. Sand should sit 1/8" below bottom of chamfer.
- Using a fine-bristle broom **remove any excess sand** from the paver surface.
- Using a **leaf blower** remove any sand or binder residue.
- **Review all watering directions (Each manufacture has different watering instructions.) This is VERY IMPORTANT!**
- Always start watering at the **bottom of the slope.**
- Always start watering in **controlled areas** per manufacturers recommendations. Example: complete watering in 200 sq. ft. area then move on to the next 200 sq. ft. and repeat.
- During final watering of poly sand, **clean surface by removing excess water** with leaf blower or squeegee depending on paver surface texture. This will remove any leftover binder residue or sand.
- Final thoughts – Always be aware of the weather when installing poly sand. **(Temperature and setting time ratings differ between products.)**
- Refer to all manufactures websites for installation videos.

TERMS AND CONDITIONS OF SALE

1. All orders are accepted subject to prevailing state or other taxes, and subject to the cost of freight applying at the time of shipment.
2. The acceptance by the seller of an order shall constitute a binding contract of purchase and sale, in accordance with the terms set out in this agreement.
3. These terms and conditions together with the purchase order form the complete contract, and there are no representations, warranties, or conditions expressed or implied affecting this contract, other than as contained herein.
4. All sales are made in accordance with the seller's samples, which the purchaser has seen and approved. No guarantee of exact color shades is made.
5. Delays incurred on delivery in excess of one hour will be billed to the purchaser at \$80 per hour or fraction thereof. Similarly, delays incurred on partial delivery (1-7 bundles) in excess of one half hour, will be billed to the purchaser at the same rate.
6. Use of any delivered materials by or on behalf of the purchaser shall be deemed to constitute acceptance of the materials by the purchaser.
7. Excessive defective material picked up or delivered to the purchaser will be replaced free of charge if a claim is made within five days. Free replacement will be the extent of the seller's warranty. Any such claim will not constitute a reason for delaying payment. All other claims must be submitted within 30 days of purchase.
8. Unsuitable or unsatisfactory materials must be available for inspection by the seller, to entitle the purchaser to any adjustment or credit.
9. No materials may be returned for credit except with the written consent of the seller, whether such materials were ordered in excess of the purchaser's requirement, by mistake, or otherwise. ACCESSORIES, SECTIONS AND OPENED MATERIAL ARE NON-RETURNABLE FOR ANY REASON.
10. Where the seller agrees to accept the return of goods, these goods are subject to freight charges and a restocking charge of 20% of their value plus delivery.
11. All custom produced product must be shipped within 30 days of the receipt of the order. After 30 days, all custom produced material will be subject to a storage fee of \$5.00 per pallet per month. Please contact your Territory Manager for more information.
12. Seller does not accept responsibility for delays in deliveries due to fire, flood, strikes, or any other condition or contingencies beyond its control.
13. The purchaser is responsible for installation of the materials on the job site, and the seller has no responsibilities in this regard.
14. All C.O.D. orders must be paid by certified check, cash, or prior approved check.
15. All approved credit accounts are payable within thirty days from the date of invoice. After 30 days, interest will be charged at 1.5% per month (A.P.R. 19.65%), calculated monthly on the balance owing at the beginning of the period. If purchaser defaults in the payment of any portion of amounts due on this account, the entire remaining unpaid balance shall, at the option of the seller, immediately become due and payable with collection costs incurred.
16. Skid deposits are non-refundable with 2 or more broken top boards or one main stringer board. If you should have skids loaded onto your vehicle or receive a delivery with skids in this condition, you must have the Unilock representative (loader or truck driver) note the quantity on the shipping document paperwork.
17. Title and ownership of the goods shall not pass to the purchaser until the entire amount owing; including interest is paid in full.

ADDITIONAL INFORMATION

1. All prices are F.O.B. Aurora, IL, Marengo, IL & Elkhorn, WI (see Freight rates below) - Contact Unilock for Kansas rates
2. Phone shipping desk for schedules, rates, and conditions.
3. Configurations may vary from time to time due to mold design changes.
4. Sectioning charge is \$22.00 per bundle.
5. There is a \$17.00 charge per standard and LTD shipping skids, \$16.00 of which is refundable when returned in good condition (\$1.00 usage fee).
6. There is a \$25.00 charge for all Stonemark™ and Ledgestone™ product pallets, \$24.00 of which is refundable when returned in good condition (\$1.00 usage fee). Stonemark products include Arcana, Skyline™ 24x24, Rivenstone™ & Yorkstone™.

CONFIRM PRICES, AS THEY ARE SUBJECT TO CHANGE.

2018 FREIGHT RATES

# of Bundles	Boom	Princeton
1 to 7	\$315.00	\$350.00
8	\$350.00	\$380.00
9	\$370.00	\$430.00
10	\$430.00	\$470.00
11 to 14	\$440.00	\$495.00

Rates are based on a 0-50 mile radius from Aurora, IL, Marengo, IL & Elkhorn, WI facilities. Please contact the shipping department for all other rates and any questions concerning delivery. Approximately 14 bundles or 43,000 pounds per truckload. Delays incurred on delivery in excess of one hour will be billed to the purchaser at \$80 per hour or a fraction thereof. Partial load deliveries in excess of one-half hour will be billed to the purchaser at the same rate.

Based on the US National Average for the Midwest Rates

Cost of Fuel	Flat Surcharge
\$2.30 to \$2.79	\$27.00
\$2.80 to \$3.29	\$42.00
\$3.30 to \$3.79	\$51.00
\$3.80 to \$4.29	\$64.00
\$4.30 to \$4.79	\$78.00
\$4.80 to \$5.29	\$93.00
\$5.30 to \$5.79	\$106.00

Fuel Surcharge for 0-50 miles only

At Least	Less Than	Fuel Surcharge
\$2.30	\$2.79	5%
\$2.80	\$3.29	10%
\$3.30	\$3.79	15%
\$3.80	\$4.29	20%
\$4.30	\$4.79	25%
\$4.80	\$5.29	30%
\$5.30	\$5.79	35%

Fuel Surcharge for deliveries over 50 miles

NOTE: Rates are based on current economic conditions and are subject to fuel surcharges, which will be based on the U.S. National Average Midwest rate of diesel fuel, calculated weekly. When the average price of fuel rises (or drops), the surcharge will take effect the following Monday. These rates can be located at www.eia.gov/petroleum/gasdiesel/.

IMPORTANT NOTES

UNILOCK PAVER PATTERNS

This Product Data Guide contains an extensive reference to patterns and designs. The purpose of these pattern swatches is to help the designer plan unique and exceptional designs. The percentages of products shown are based on the pattern and not on bundle configurations. In fact, there may be situations in which a pattern has been created with one particular size of stone, but that stone only comes packaged with two other sizes. This means that the designer will have to plan how the other components are used in the overall plan. This is usually accomplished by adding a border or an accent. As a result, overages or shortages may occur in certain patterns. The designer and/or installer of Unilock products accepts all responsibility for design and all associated costs incurred as a result of applying any of Unilock's suggested design patterns in a project. Please plan your project and review your order carefully prior to ordering.

TRANSFERABLE LIFETIME GUARANTEE

Unilock provides a Transferable Lifetime Guarantee* on the structural integrity of our paving stones, slabs and retaining wall units to the original purchaser of the product for residential use. Any materials installed and maintained to our guidelines, and subject to normal wear, that prove defective, will be replaced without cost. Color matching cannot be guaranteed and replacement labor is not included. Proof of purchase is required.

Excessive defective material (over the industry accepted normal of 2% for non-tumbled unit pavers) delivered to the purchaser will be replaced free of charge if a written claim is made within 5 days of delivery from the manufacturer. Such claims will not constitute reason for delaying payment. All goods shall be deemed accepted if completely installed. Inspect concrete products prior to opening bundle packaging to ensure that shape and color are as ordered. Unsatisfactory material must be available for inspection by Unilock to entitle the purchaser to any adjustment or credit. Inspect all concrete units during installation and set aside any which are chipped or cracked to use for any cut pieces required. The color of concrete products may vary significantly between production lots. Always install concrete units from several bundles simultaneously to ensure proper distribution of color. Prior to final compaction, inspect installed pavers for good color distribution. Relocate certain pavers, if necessary, to achieve desired color blend.

*Transferable Lifetime Guarantee: Register your project within 60 days of your dated proof of purchase to ensure your Unilock Guarantee is fully transferable! Simply go online at unilock.com and follow instructions. Once processed, you will receive an original Transferable Warranty Certificate for your records.

PRODUCT HANDLING WARNING

Bundle Straps Under Tension - Use extreme caution when removing or handling straps. Always wear gloves, goggles, safety footwear, and protective clothing when removing or handling straps. Failure to do so may result in serious bodily injury or loss of sight. Cut all concrete products only in well ventilated areas. Inhalation of dust is a serious health risk. A "NIOSH" (US) or a "CSA" (CDN) approved respirator, safety goggles, hearing protectors, and gloves must be worn at all times. Always "wet-cut" or "wet grind" concrete products to minimize dust.

Do not stack bundled concrete products higher than 2 bundles high. Contents of the bundle may be unstable and subject to topple when stacked. Always use extreme caution and appropriate equipment when transporting or storing bundled concrete products. Failure to do so may result in serious bodily injury or death. Always obey gross vehicle weight (GVW) loading limitations and regulations.

Hazard Rating: Fire 0, Health 1, Reactivity 0. See SDS Concrete Masonry (Pavers). Contact Unilock for complete sheet or view safety information at www.unilock.com

Unilock assumes no liability or responsibility for loss or damage, resulting from the improper use or handling of our products, or from failure to follow instructions, warnings, and/or advisories on the product label, and on the SDS sheet.

Umbriano® is a trademark of Metten Stein + Design GmbH & Co KG used under license by Unilock.

By permission of Ceramiche Caesar S.p.A., Via Canaletto 49, 41040 Spezzano di Fiorano (MO), Italy, which is the sole proprietor of the trademark and some images in this catalog. Fairstone™ is a trademark of Marshalls PLC.

Unilock Ltd. and Hengestone Holdings, Inc. are the owners or authorized users of all trademarks used in this publication unless otherwise specified.

Measurements throughout this portfolio are nominal.

*Colors shown in this catalog should be used only as a guide. Colors should always be chosen from actual samples. Contact your local Unilock representative for color availability in your area.

Not all products shown are available at all Unilock locations. Log on to www.unilock.com for availability.

IMPORTANT NOTICE

IMPORTANT NOTICE

1. **DO NOT USE** Polymeric Jointing Sand on the following products:

Series™ Il Campo®

If joint stabilization is required, use ordinary jointing sand and apply a stabilizing sealer. Contact your local Unilock office for recommended sealants and application specifics.

2. **EXTRA CARE** must be exercised when using Polymeric Sand on the following products:

Arcana Courtstone® Copthorne® Richcliff® Senzo™ Town Hall® Tribeca Cobble Umbriano®

Unilock's Polymeric Jointing Sand can be used on these products but the fine polymers and binders in Unilock Polymeric Jointing Sand have a natural tendency to adhere to the surface and therefore extra diligence must be taken to pre-clean the surface prior to "wetting the sand in" and squeegee off the surface post application. Failure to do so will result in a "whitish haze" on the surface that is difficult to remove.

3. **IMPORTANT COMPACTION NOTICE:** Always pre-compact the pavers WITHOUT SAND IN THE JOINTS. This will facilitate proper leveling. Polymeric sand can then be swept into the joints. *Always use a compactor with a protective membrane attached to the bottom of the plate.*

Unilock Polymeric Jointing Sand, cleaners and sealers, must always be applied by a trained and experienced professional. Contact your local Unilock office for training and the most up-to-date best practices.

NOTICE: Unilock does not accept any responsibility for damage to the surface caused by the improper application and use of Unilock polymeric sand, sealers or cleaners.

COLOR BLEND DESCRIPTIONS

COLOR NAME	DESCRIPTION	COLOR NAME	DESCRIPTION
Alpine Grey	Natural, Buff and Charcoal	Iron River	White and Grey with Rust Veining
Autumn Red	Red, Buff and Charcoal	Limestone	Light Grey, Charcoal and Natural
Basalt	Blue-Black	Lugano	Solid Beige/Tan
Bavarian Blend	Brown, Cream and Charcoal	Midnight Sky	Charcoal with Black Flake
Belgian Blue	Blue-Grey	Mineral Ice Grey	Fine Black and White Granite
Bluestone	Blue with Black and Brown Veining	Mocha Brown	Brown and Red Granite
Burgundy Red	Plum with Red	Modena	White concrete with Black flecks
Burnt Clay	Brown with Red	Nevada	Chamois and Natural
Canyon	Plum, Gold & Grey	Nuvola	Dark Charcoal and Light Grey
Castano	Dark Brown and Burnt Brown Blend	Old Oak	Rust with Red
Charleston	Plum, Charcoal and Sand	Onyx Black	Dark Charcoal with Black Granite
Corvara	Light Grey/Beige	Opal	Light Grey and White
Cocoa Brown	Solid Dark Brown	Pebble Taupe	Tan and Brown
Cobalt Grey	White, Grey and Blue hues	Peppered Granite	White aggregates with black flecks
Coastal Slate	Grey and Tan	Prairie	Lt. Brown, Lt. Buff and Lt. Salmon
Coffee Creek	Yellow, Rose and Charcoal	Pueblo	Buff and Brown
Copper Ridge	Copper and Buff	River	Buff, Natural and Charcoal
Crema	Cream and Buff	Rustic Red	Red and Charcoal
Dawn Mist	Grey and Tan	Sable Blend	Cream, Tan and Brown
Fieldstone	Dark Gold, Buff & Charcoal	Sahara	Cream and Light Buff
French Grey	Light Grey	Sandalwood	Brown and Buff
Golden Tan	Dark Brown, Light Brown with White Granite	Sierra	Brown, Sandstone and Charcoal
Granite	Charcoal and Natural	Smoke Shale	Charcoal and Dark Charcoal
Granite Fusion	Charcoal and Natural	Steel Blue	Grey and Blue
Harvest Brown	Brown	Steel Mountain	Grey and Cream
Heritage Brown	Dark Brown and Salmon	Summer Wheat	Cream White with Yellow and Light Grey Flake
Heritage Clay	Burnt Clay and Basalt	Sycamore	Brown, Buff and Charcoal
Heritage Red	Burgundy Red and Basalt	Vivanto	Dark Grey and Charcoal
Honey Gold	Gold with Brown Veining	Winter Marvel	White with Black Flake

PRODUCT DIRECTORY

Unit Pavers

Product	Page	Finish	Pedestrian	Residential Vehicular	Commercial Vehicular	Environmental	For Borders & Accents
Ada Paver™	2	S	✓				
Anchorlock®	4	S			✓		
Arcana	2	S	✓				
Artline™	3	M	✓	✓			
Beacon Hill™ Flagstone	4	F	✓				
Beacon Hill™ Smooth	5	S	✓				
Bristol Valley®	5	F	✓				
Brussels Block®	6	W	✓	✓			✓
Brussels Premier™	6	W	✓	✓			✓
Camelot™	7	S	✓	✓			✓
Copthorne®	7	T	✓	✓			✓
Courtstone®	8	C	✓	✓			✓
Eco-Line®	9	S	✓	✓	✓	✓	✓
Eco-Optiloc™	9	S	✓	✓	✓	✓	
Eco-Priora™	10	M	✓	✓	✓	✓	
Eco-Promenade®	10	M	✓	✓	✓	✓	
Hollandstone™	11	S	✓	✓	✓		✓
Holland™ Premier	11	S	✓	✓	✓		✓
Il Campo®	12	B	✓	✓	✓		✓
Mattoni	12	T	✓	✓	✓		✓
Natural Stone	13	SM	✓	✓	✓		✓
Olde Greenwich Cobble®	14	D	✓	✓	✓		✓
Optiloc®	14	S	✓	✓	✓		
Porcelain	15	SM	✓				
Skyline™ 24" x 24"	16	S	✓				
Promenade™ Plank Paver	16	M	✓	✓	✓		✓
Richcliff®	17	F	✓	✓			✓
Rivenstone™	17	F	✓				
Senzo™	18	SZ	✓	✓	✓		✓
Series™	18	WS	✓	✓	✓		✓
Thornbury™	19	F	✓	✓	✓	✓	
Town Hall®	19	C	✓	✓	✓	✓	✓
Tribeca Cobble™	20	T	✓	✓	✓		✓
Turfstone™	20	S		✓		✓	
Umbriano®	21	SZ	✓				✓
Westport™	22	F	✓	✓			✓
Yorkstone™	23	F	✓				

Retaining Walls

Product	Page	Finish	Gardens	Retaining Walls	Steps	Seat walls	Pillars
Brussels Dimensional Stone®	24	W	✓		✓	✓	✓
Cumberland™ Wall	25	CH	✓	✓	✓	✓	✓
DuraHold®	26	SM		✓			
Estate Wall®	27	SP/W	✓	✓	✓	✓	✓
Lineo™ Dimensional Stone	28	SM	✓		✓	✓	✓
Olde Quarry®	29	W	✓	✓	✓	✓	✓
Pisa2®	30	SP	✓	✓	✓	✓	✓
Rivercrest® Wall	31	F	✓		✓	✓	✓
U-Cara™	33	SD	✓	✓	✓	✓	✓

Finishes: B=Brushed; C=Cobblestone; CH=Chiseled Stone; D=Dimpled; DW=Dimpled and Weathered; F=Flagstone; S=Standard; SM=Smooth; SZ=Smooth Zero Bevel; SP=Split; SP/W=Split and Weathered; T=Timeworn; W=Weathered; WS=Washed; M=Multiple Finishes available

This application chart should only be used as a guide. Site conditions, base materials, pattern, and frequency of use may vary the performance of various types and styles of products.



BOSTON
(508) 278-4536

CLEVELAND
(330) 927-4000

NEW YORK
(845) 278-6700

BUFFALO
(716) 822-6074

DETROIT
(248) 437-7037

ONTARIO
(416) 646-9000

CHICAGO
(630) 892-9191

MILWAUKEE
(262) 742-3890

KANSAS CITY
(913) 417-7985

MARENGO
(815) 568-4700

UNILOCK.COM | 1-800-UNILOCK

©2018 Hengestone Holdings, Inc.