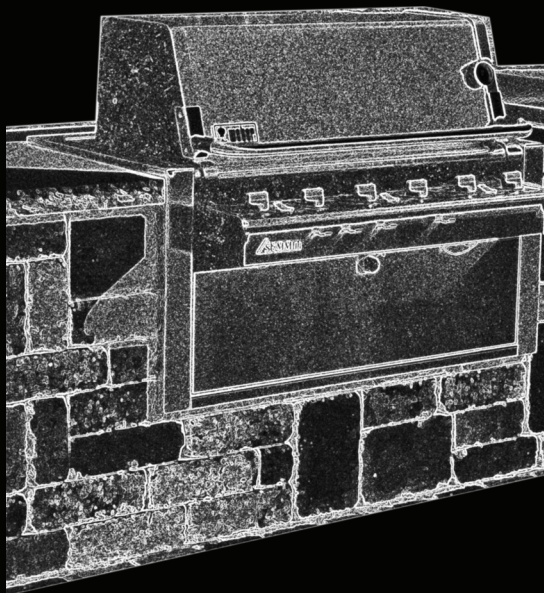




Build it.



OUTDOOR GRILL ISLAND

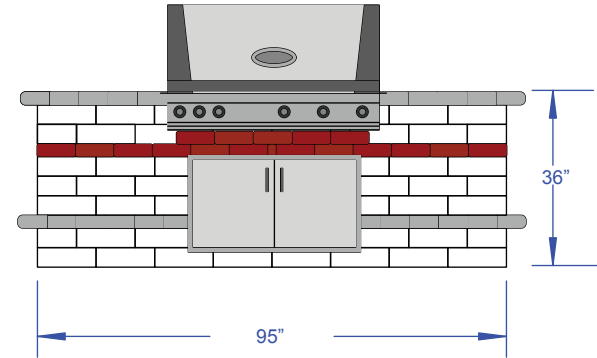
ASSEMBLY INSTRUCTIONS

UNILOCK®
DESIGNED TO CONNECT.

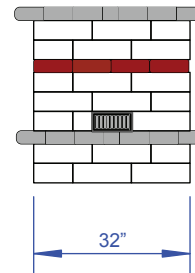
OUTDOOR GRILL ISLAND

The main purpose of the following diagrams and instructions for building a grill island is that you gain a comprehensive understanding of all the aspects involved. Although measurements are provided, many will vary depending on the Unilock wall type you are using, varying grill sizes and styles, and of course, the final design and shape of the grill island itself.

Grill islands are often combined with bar seating and food preparation areas which may require built-in refrigeration units, sinks, and other features such as lighting and/or table-top fire features. These items must be well thought out prior to construction.

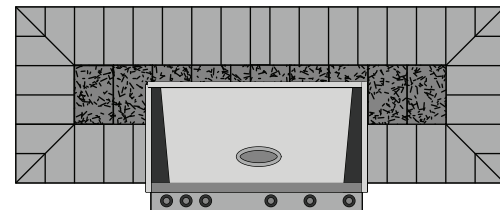


Front View



End View

We recommend that you take some time and familiarize yourself with the various layers required for your project and then carefully map out the measurements of your project before starting construction. In all cases, all wall units are glued together with Unilock Concrete Adhesive.



Top View

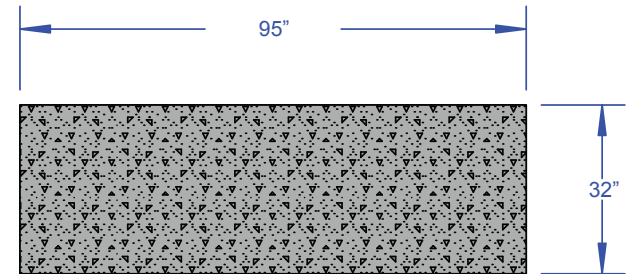
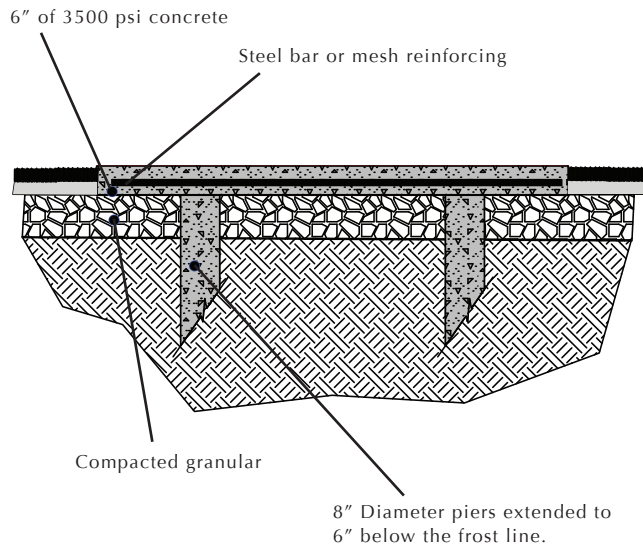
GRILL ISLAND WITH BANDING

The Base, Foundation and First Layer

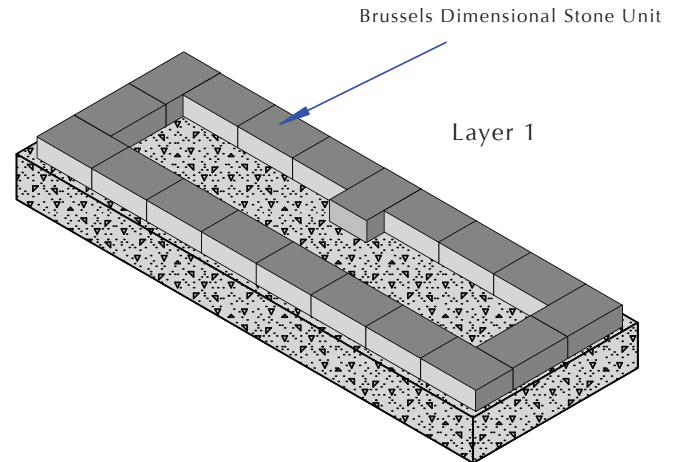
The purpose of the base pad is to support the structure and to prevent any tipping or settlement. A finely trowelled surface on the base pad will ensure an accurate and speedy installation. The reinforced base pad is constructed on concrete tubular piers (Sono tubes), which extend below the frost line. The actual pad rests on these piers and on a compacted granular base that is both free-draining and has good load bearing properties.

Before you actually begin construction you will want to determine how you will access gas, power and/or water lines and make arrangements to get the conduits placed and positioned ahead of pouring the base pad concrete.

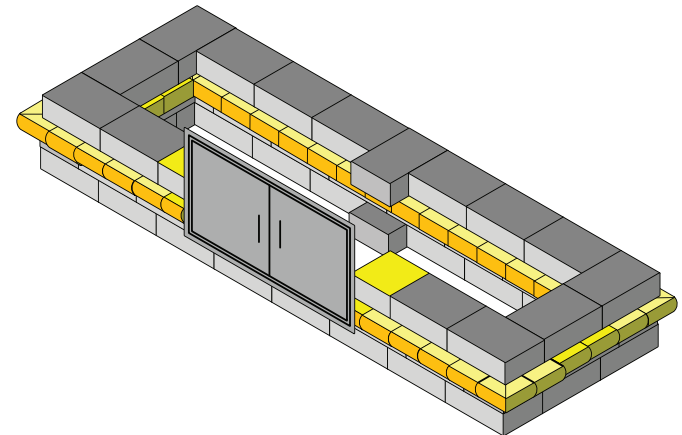
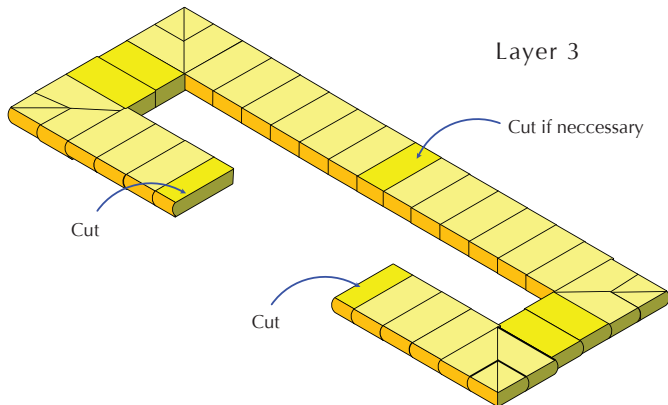
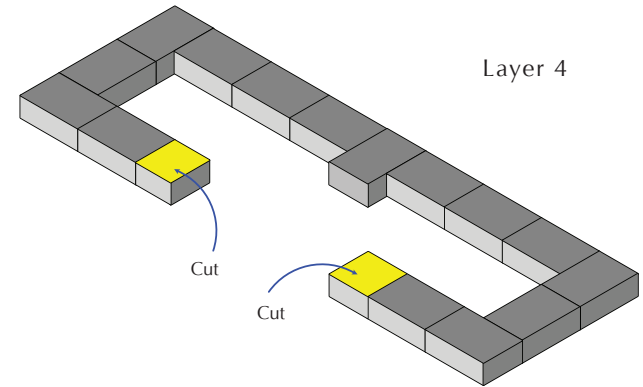
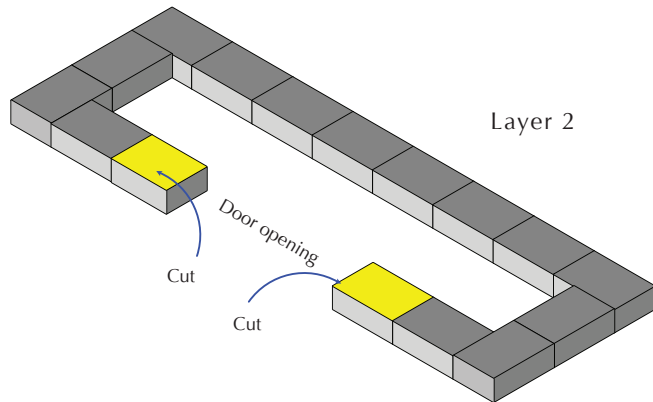
Always observe local building codes and bylaws.



Top view of base pad

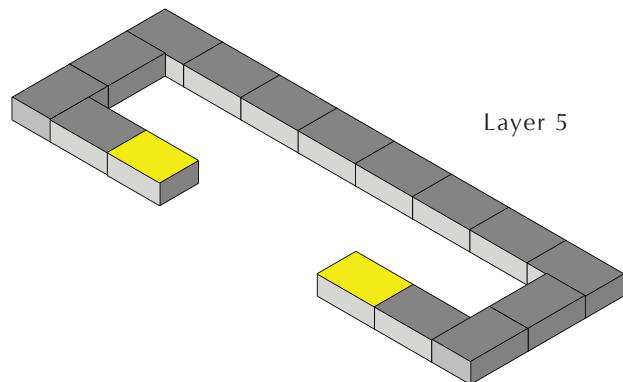


LAYER 2 - 4

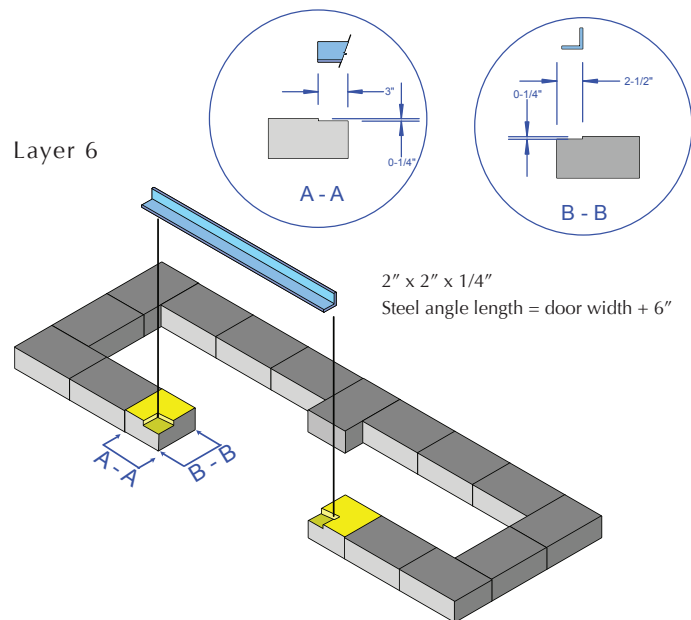


Layer 2-4 are self explanatory and the diagrams indicate the stones which require cutting. We recommend that you have all your appliances on site prior to construction. This way you can verify measurements and not have any surprises later when a manufacturer makes a design or model change.

LAYER 5 - 7

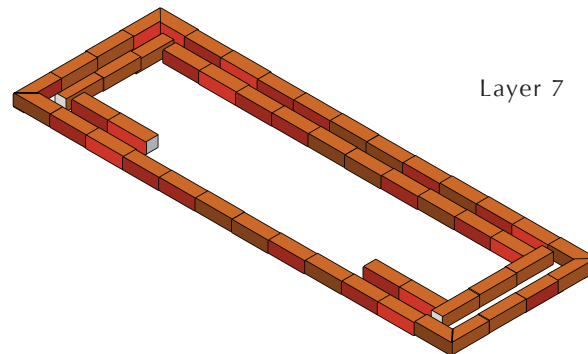


Layer 5



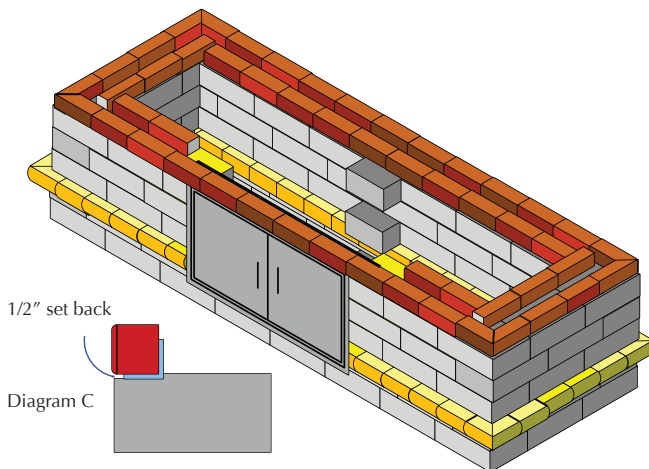
Layer 6

Layer 6 will require two notches to be cut into the stone in order to support the Copthorne accent band over the grill access door. (See Diagram AA and BB, page 8). This is an aluminum or galvanized $2" \times 2" \times 1/4"$ angle strip. DO NOT use regular steel as it will rust unless painted with rust paint.



Layer 7

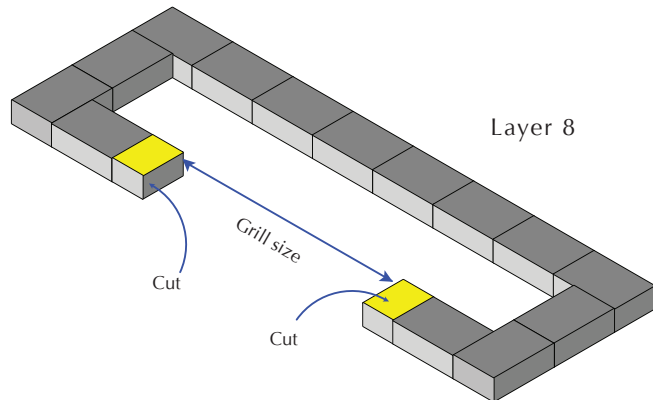
Layer 7 is the Copthorne accent layer. Lay the Copthorne on its side with the face out and glue to the previous layer and the bridge. (Shims may be required because of the tapered side of the Copthorne) (Diagram C). A second row of Copthorne is glued at the back as a secondary support for subsequent layers of wall units.



$1/2"$ set back

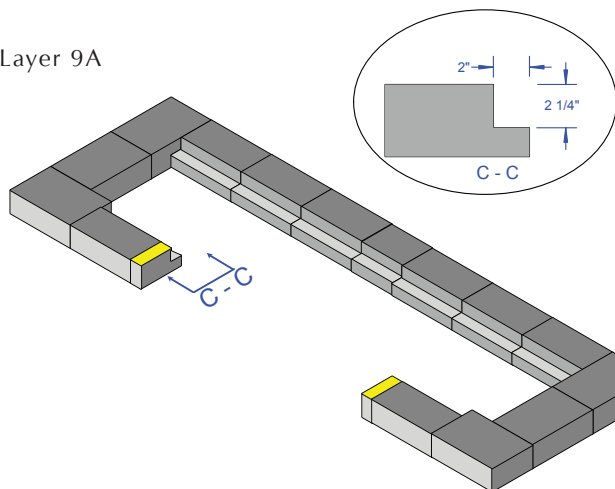
Diagram C

LAYER 8 - 9

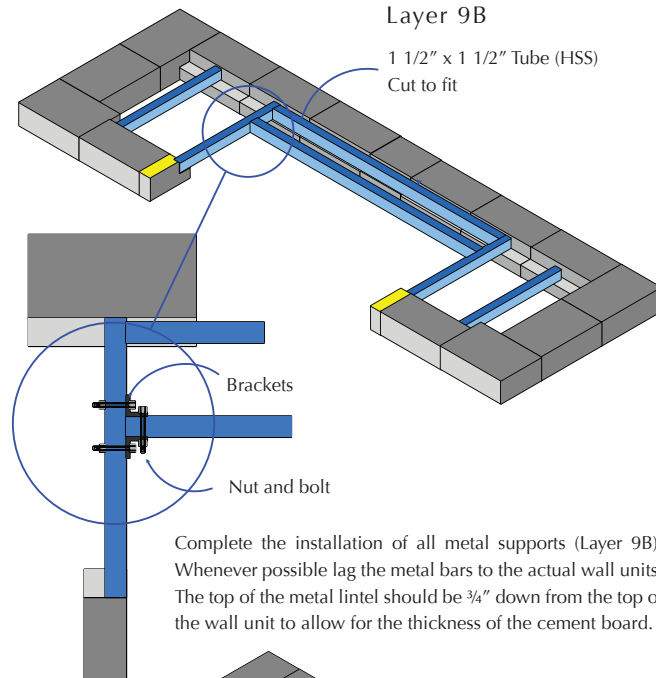


Cut the two stones shown in Layer 8 allowing the correct amount of room for the size of grill. Notch out the back row of wall stones as shown (Layer 9A) to support the steel/aluminum angle pieces which in turn support the counter top.

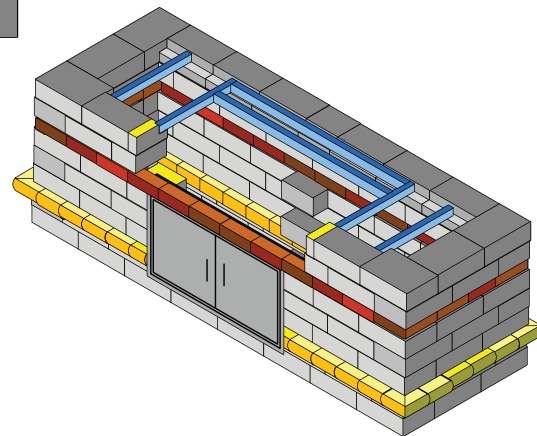
Layer 9A



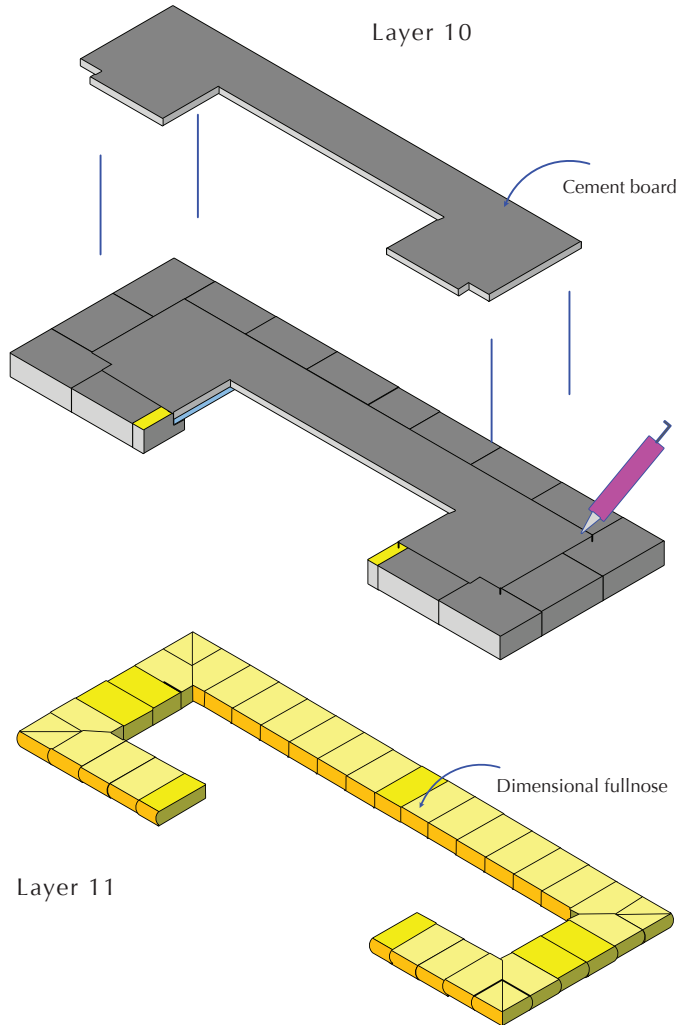
Layer 9B



Complete the installation of all metal supports (Layer 9B). Whenever possible lag the metal bars to the actual wall units. The top of the metal lintel should be 3/4" down from the top of the wall unit to allow for the thickness of the cement board.

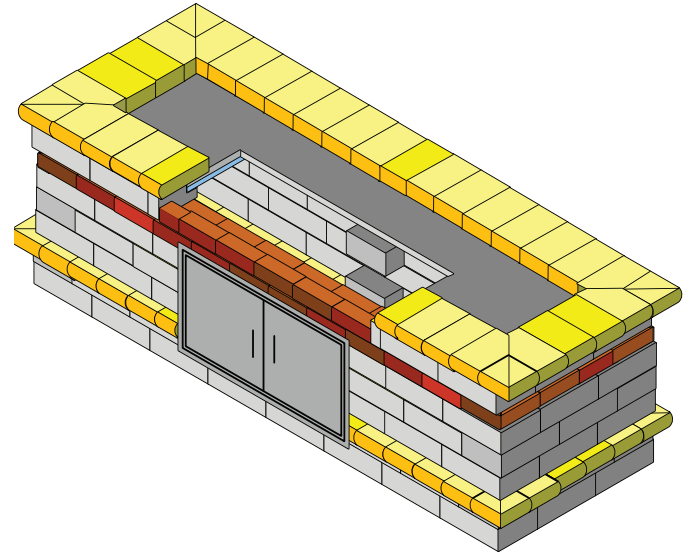


LAYER 10 - 11



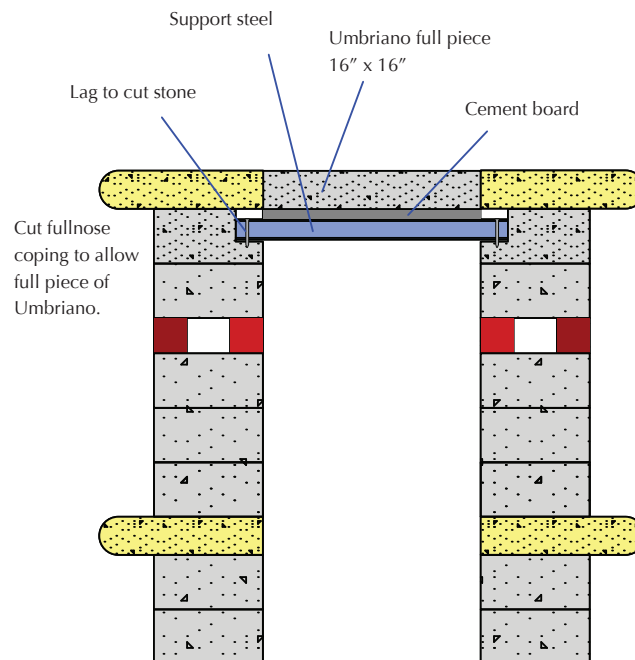
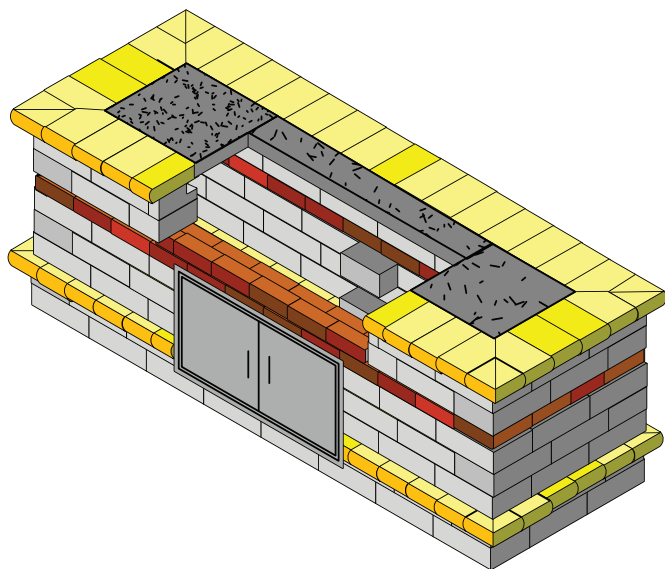
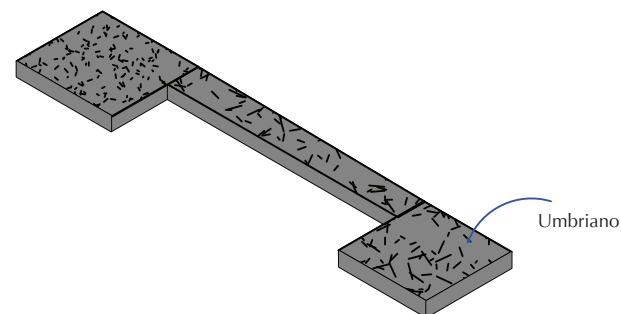
Layer 10 – Cut the cement board to the area and pattern to fit inside the notched wall units. Adhere using Unilock Concrete Adhesive.

Layer 11 – The final layer is comprised of the Fullnose units. Position as shown and miter cut the corners. Be sure to glue all units on the bottom and on the sides.



FINAL STEPS

insert the Umbriano paver units into the top of the grill island. Glue them directly to the cement board. Once this is completed, you are ready to place in the grill unit.



Alternate Countertops – In some cases you may wish to use a custom granite or stone countertop. If so, layer 11 can be eliminated. Always confirm all measurements prior to ordering to ensure that you receive the correct opening and overhang sizes.

Other Accessories – Other accessories such as side burners, refrigeration units etc., can be installed into the grill island as well. You will need to plan ahead where you want to place these units and make the necessary adjustments to this plan to accommodate the units.

UNILOCK®

DESIGNED TO CONNECT.

BOSTON

35 Commerce Drive
Uxbridge, MA 01569
Tel: (508) 278-4536
Fax: (508) 278-4572

BUFFALO

510 Smith St.
Buffalo, NY 14210
Tel: (716) 822-6074
Fax: (716) 822-6076

CHICAGO

301 E. Sullivan Road
Aurora, IL 60504
Tel: (630) 892-9191
Fax: (630) 892-9215

CLEVELAND

12560 Sheets Road
Rittman, OH 44270
Tel: (330) 927-4000
Fax: (330) 927-4100

DETROIT

12591 Emerson Drive
Brighton, MI 48116
Tel: (248) 437- 7037
Fax: (248) 437-4619

MILWAUKEE

West 4814 County
Highway A
Elkhorn, WI 53121
Tel: (262) 742-3890

NEW YORK

51 International Blvd.
Brewster, NY 10509
Tel: (845) 278-6700
Fax: (845) 278-6788

CHESTER

26 Tetz Rd.
Chester, NY 10918
Tel: (845) 469-1230
Fax: (845) 469-1213

PHILADELPHIA

229 Route 541 Bypass
Lumberton, NJ 08048
Tel: (609) 914-0000
Fax: (609) 914-0209

TORONTO

287 Armstrong Ave
Georgetown, ON L7G 4X6
Tel: (416) 646-9000
Fax: (905) 874-3034

DISCLAIMER OF LIABILITY

Proper construction and use of an outdoor fireplace is your responsibility. Unilock shall not be held liable for any improper or incorrect use of our products, materials or information provided in this brochure and Unilock assumes no responsibility for user's use of them. In no event shall Unilock be liable for any direct, indirect, incidental, special, exemplary or consequential damages. Always follow the fireplace insert manufacturers' assembly and use instructions.